



WORLD-WIDE

AVIATION SERVICE

Tickets and information at:

Printed in Sweden

SVENSKA TRICKERI AB 462175

TIMETABLE

July 1946



ABA-SILA

Table of contents

Swedish Airlines ABA-SILA's Offices abroad	page 2
General Information	» 2—3
Abbreviations and Symbols	» 4
Booking Offices	» 3—4
Fares	» 22—23
Route Map of Swedish Airlines ABA-SILA Services	» 12—13
Swedish Inland and Scandinavian Services	» 5—7
Swedish European Services	
Gothenburg—London	» 14
Malmö	
—Amsterdam	» 8
—Paris	» 16
—Zürich	» 10
Stockholm	
—Amsterdam	» 8
—Brussels	» 9
—Geneva	» 10
—Lisbon	» 11
—London	» 14
—Nice	» 15
—Paris	» 16
—Prague	» 17
—Rome	» 18
—Warsaw	» 19
Swedish Intercontinental Services	
Stockholm	
—Addis Ababa	» 20
—Cairo	» 20
—New York	» 21

Swedish Airlines ABA-SILA's head offices in Stockholm

AB Aerotransport, ABA, Kungsholmstorg 1, tel. 5200 10
 telegrams: NAMROLF
 Swedish Intercontinental Airlines, SILA, Kommendörsgatan 9, tel.
 67 10 81, telegrams: SILABOLAG
 Forwarding Dept., Birger Jarlsgratan 55, tel. 10 38 30

Swedish Airlines ABA-SILA's Offices abroad

Brussels	ABA-SILA, 145, Rue Royale, Brussels, Belgium. Tel. 18 10 00. Telegrams: Swedair.
Copenhagen	ABA-SILA, Københavns Lufthavn, Kastrup, Denmark. Tel. Kastrup 1212. Telegrams: Swedair.
Geneva	ABA-SILA, Flugplatz, Geneva, Switzerland. Tel. 273133. ABA-SILA, Hotel Cornavin, 16 Place Cornavin, Geneva, Switzerland. Tel. 28 030. Telegrams: Aerotransport.
Lisbon	ABA-SILA, 120 Avenida da Liberdade, Lisbon, Portugal. Tel. 21 348. Telegrams: Swedair.
London	ABA-SILA, 57 Grosvenor Street, London W 1, England. Tel. MAYfair 2064. Telegrams: Swedair.
New York	ABA-SILA, Swedish Airlines, 270 Park Avenue, New York, USA. Tel. Eldorado 5—6702. Telegrams: Swedair.
Nice	ABA-SILA: Hotel d'Angleterre, Nice, France. Tel. 82948. Telegrams: Swedair.
Oslo	ABA-SILA, Fred Olsens Gate 2, Oslo, Norway. Tel. 17 270. Telegrams: Swedair.
Paris	ABA-SILA, 125 ^b , Avenue des Champs Elysées, Paris 8 ^e , France. Tel. Balzac 04—28. Telegrams: Swedair.
Prague	ABA-SILA, Vodickova Ulice 34, Prague II, Czechoslovakia. Tel. 380 51, 380 52. Telegrams: Swedair.
Reykjavik	ABA-SILA, Kirhjuveggi 34, Keflavik, Iceland. Tel. Keflavik 122. Telegrams: Swedish Airlines.
Rome	ABA-SILA, 45 Corso Trieste, Rome, Italy. Tel. 86 80 17. Telegrams: Swedair.
Warsaw	ABA-SILA, Hotel Polonia, Al. Jerozolimskie 39, tel. 897 60/61. Warsaw, Poland. Telegrams: Swedair.

General Information

All times and fares in this time-table are given without liability. Be-
 fore starting on a flight the passenger therefore should always enquire
 regarding the current timetable at ABA-SILA, a travel bureau or other

agency, authorized by ABA-SILA.

The 24-hour system is used in this timetable, thus: 12.00 is 12.0
 noon. 18.00 is 6.0 p. m. 21.00 is 9.0 p. m.

Transport Regulations. The conveyance of passengers, luggage and
 goods by air is effected in accordance with the regulations of the Warsaw
 Convention and subject to the liability laid down in the Law relating to
 transport by aircraft.

Time-tables. The times of arrival are approximate. ABA-SILA assumes
 no liability for their being strictly adhered to. All times quoted are
 local times.

Arrival at embarkation points. Passengers who wish to be transported
 to the airport by ABA-SILA should arrive at the terminal dispatch
 office at least 15 minutes before the departure of the bus or car.

Passengers who do not avail themselves of the bus or car services should
 be at the counter of the airport office in time to permit the completion
 of governmental and other requirements: on Swedish internal lines
 15 minutes, and on all other services at least 30 minutes before the
 aircraft's scheduled departure. Those who arrive later cannot claim
 transport or repayment of fare.

Validity of tickets. Single tickets: completion of journey within 12
 months of date of issue. Return tickets: completion of return journey
 within 2 months of date of commencement of outward journey.

Children under 2 years accompanied by an adult and not occupying a
 separate seat are carried at 10 % of the adult fare; children over 2 and
 under 12 years are carried at 50 % of the adult fare.

Baggage. Passengers, including children, carried at 50 % of fare, are per-
 mitted a free baggage allowance of 20 kgs (44 lbs). Children, carried
 at 10 % of fare, are entitled to no free baggage allowance.

Example. Men. For the average man a lightweight airplane bag will
 usually accommodate the following personal articles within 20 kgs (44
 lbs): 2 suits, 6 shirts, 4 articles of underwear, 2 pairs of pyjamas,
 collars, ties, socks, handkerchiefs, two pairs of shoes, toilet articles,
 miscellaneous.

Women. For the average woman an airplane lightweight suitcase will
 usually accommodate the following articles within 20 kgs (44 lbs):
 two lightweight suits, three blouses or sweaters, three sport dresses,
 two afternoon dresses, three evening dresses, two pairs sports shoes,
 two pairs dress shoes, one pair evening sandals, slippers, two soft felt
 hats or turbans, two hand bags, one dozen pair stockings, one negli-
 gée, five articles of underwear, three nightgowns, belts and acces-
 sories, toilet articles.

Baggage in excess of the free allowance will be charged for at published
 excess baggage rates.

**Only 30 kgs (66 lbs) of baggage is guaranteed transport by the same
 service as the passenger.** N. B. On Sabena's lines only 20 kgs (44 lbs.)
 Cameras may be carried as registered baggage but will not be accessible
 to passengers during flight.

Reservations of seats is made by the ABA-SILA-offices, travel bureaux
 or other agencies, authorized by ABA-SILA. Applications for accom-
 modation on inland lines and those to Oslo, Copenhagen and Aalborg
 should be made not more than one month prior to departure. On
 foreign lines not more than 3 months.

For booking offices see page 3—4.

Cancellations. If cancellation effected more than 24 hours before sched-
 uled departure: no fee

if cancellation effected 24 hours or less before scheduled departure: no
 refund unless the service has not been fully booked or the seat is resold.

Break of journey is permitted on through fares on European services.
 Further particulars are obtainable at the booking office.

Exception: A stop in Gothenburg is not permitted for passengers to and
 from Malmö. A break of journey is not allowed on KLM, except for
 waiting for the next throughconnection.

Booking Offices:

Stockholm: Flygcentralen for tickets and information, Kungsgatan 18,
 (W 9—17, Sat 9—16). Tel: 23 43 65. Telegrams: Airticket.
 Flygpaviljongen, Nybroplan. (W 9—18, S 9—11, 15—17)
 Tel.: 23 43 65. Telegrams: Airticket.

- Aalborg:** DDL, Jernbanegade 1. Tel.: 9009. Telegrams: Danairlines.
- Amsterdam:** KLM, Schiphol. Tel.: 97451. Telegrams: Transaera.
- Brussels:** SABENA, l'Aerodrome de Haren. Tel.: 161560. Telegrams: Airsabena.
- Copenhagen:** DDL, Københavns Lufthavn, Kastrup. Tel.: Kastrup 1388. Telegrams: Danairlines.
- Gander:** ABA-SILA, Gander Aerodrome, Newfoundland.
- Geneva:** Swissair, 16 Place Cornavin. Tel.: 26000. Telegrams: Swissair.
- Gothenburg:** Trafikcentralen, Slussplatsen. (W 8—20, S 10—16). Tel.: 174900. Telegrams: Airticket.
- Karlstad:** Karlstad airport. (W 8—17, S 8—14). Tel.: 17200. Telegrams: Airticket.
- Lisbon:** Aero Portuguesa Lda, Avenida da Liberdade 120. Tel. 21348. Telegrams: Aero.
- London:** BOAC, Airways Terminal, Buckingham Palace Road, London SW 1. Tel.: Victoria 2323. Telegrams: Flying.
- Luleå:** Kallax airport. (W 9—16.30, Sat 9—13, S 9—11). Tel.: 53016. Telegrams: Airticket.
- Madrid:** IBERIA, 6 Antonio Maura. Tga. Iberia.
- Malmö:** Bulltofta airport. (D 7.30—19). Tel.: 19960. Telegrams: Airticket.
- New York:** ABA-SILA, 630, Fifth Avenue. Tel.: Circle 6-6190. Telegrams: Swedticket.
- Nice:** AFR, 16, Avenue de Verdun. Tel. 84308, 87400. Tga Airfrans.
- Oslo:** DNL, Fridtjof Nansens Plass 8. Tel.: 29970. Telegrams: DNL booking.
- Paris:** AFR, 2 Rue Scribe, Paris 9e. Tel.: Opéra 41-00. Telegrams: Airfrans.
- Prague:** CSA, Vodickova ulice 34. Tel.: 38051, 38052. Telegrams: Aerolinie.
- Reykjavik:** Flugfélag Island, Laekyargötu 4. Tel. 5040 Telegrams: Flugfélag.
- Rome:** AVIOLINEE, Via Regina Elena 63. Tel. 4226.
- Sundsvall/Härnösand:** Skeppsholmen airport. (W 9—17, S 9—11). Tel.: 78435. Telegrams: Airticket.
- Visby:** ABA, Travel bureau, Strandgatan 28. (D 7-19). Tel. 2398, 2399. Telegrams: Airticket.
- Warsaw:** LOT, ul. Nowogrodzka 49. Tel.: 89560. Okęcie airport. Tel.: 86461.
- Zürich:** Swissair, Hauptbahnhof. Tel.: 273133. Telegrams: Airticket.
- Örebro:** Örebro Flygplats. (D 8.30—17). Tel. 23750. Tga Airticket.

Explanation of abbreviations and symbols:

- AA = American Airlines
 AFR = Air France
 BOAC = British European Airways (Div. of British Overseas Airways Corp.)
 CSA = Československe Aerolinie
 DDL = Det Danske Luftfartsselskab AS
 DNL = Det Norske Luftfartsselskap AS
 KLM = Koninklijke Luchtvaart Maatschappij NV
 SABENA = Société Anonyme Belge d'Exploitation de la Navigation Aérienne
 SWISSAIR = Schweizerische Luftverkehr A. G.
- ↔ = Steward service,
 D = Daily,
 W = Weekdays,
 S = Sundays,
 Mon = Mondays,
 Tue = Tuesdays,
 Wed = Wednesdays,
 Thu = Thursdays,
 Fri = Fridays,
 Sat = Saturdays,

Inland and Scandinavian services

Booking offices — see page 3—4. Fares — see page 22—23.

The main line "Rikslinjen"

**Malmö—Gothenburg—Stockholm—
Sundsvall/Härnösand—Luleå**

km	1650/1651 Daily	ABA	1650/1651 Daily	km	
0	7.00	↔d Malmö a	—	21.20	1528
265	8.05	a Gothenburg . . . d	—	20.10	—
—	8.20	d Gothenburg . . . a	12.45	19.55	1263
706	10.05	a Stockholm . . . d	10.50	18.00	—
—	13.00	d Stockholm . . . a	11.30	16.50	822
1100	14.40	a Sunds/Härn. . . d	9.50	15.10	—
—	—	d Sunds/Härn. . . a	9.30	—	428
1528	—	a Luleå d↔	7.45	—	0

Departure time in minutes () before the take-off of the aircraft.

- Bus service:** Malmö: ABA-SILA, Central Station (30)
 Gothenburg: ABA-SILA, Trafikcentralen, Slussplatsen (40)
 Stockholm: Flygpaviljongen, Nybroplan (35)
 Sundsvall: ABA-SILA, (Swedberg & Kronberg AB) Gamla järnvägsstationen (60)
 Härnösand: ABA-SILA, (F:a Carl Gust. Ringblom) Skeppsbron 21 (80)
 Luleå: ABA-SILA, (Luleå Sped. AB), Nygatan 2 (35)

Stockholm—Visby

1633 Daily					ABA 219 km	1633 Daily				
7.00	10.20	13.40	16.15	17.00	d Sthlm a	9.40	13.00	16.20	18.55	19.40
8.10	11.30	14.50	17.25	18.10	a Visby d	8.30	11.50	15.10	17.45	18.30

Departure time in minutes () before the take-off of the aircraft.

- Bus service:** Stockholm: Flygpaviljongen, Nybroplan (35)
 Visby: ABA-SILA, travel bureau Strandgatan 28 (30)

Boat-Plane Stockholm-Visby v. v.

Combined round-trip air-and-boat ticket Stockholm—Visby or vice versa now sold at Gotlandsbolaget, travel bureaux, the ABA-SILA offices and AB W. Larka, Stockholm, at a price of Swrcs 66:— including, except your air-ticket, a 1st class boat-ticket and a 1nd class railway-ticket.

Stockholm—Örebro—Oslo

km	ABA 1620	Daily ☼	ABA 1620	km
0	8.30	↘d Stockholm..... a↑	14.00	481
168	9.20	a Örebro..... d	13.15	—
—	9.40	d Örebro..... a	12.55	313
481	11.05	↙a Oslo..... d↘	11.35	0

Departure time in minutes () before the take-off of the aircraft.
Bus service: Stockholm: Flygpaviljongen, Nybroplan (45)
 Örebro: ABA-SILA, Stora Hotellet (20)
 Oslo: DNL, Klingenbergsgaten 7 (60)

Copenhagen—Gothenburg—Oslo

km	1712	☼	DDL DNL Daily	1712	km
0	20.30	↘d Copenhagen..... a↑	12.55	522	—
254	20.35	a Gothenburg..... d	10.50	—	—
—	20.30	d Gothenburg..... a	10.35	268	—
522	22.00	↙a Oslo..... d↘	9.25	0	—

Departure time in minutes () before the take-off of the aircraft.
Bus service: Copenhagen: DDL, Dagmarhus, Vestre Boulevard 12 (50)
 Gothenburg: ABA-SILA, Trafikcentralen, Slussplatsen (60)
 Oslo: DNL, Klingenbergsgaten 7 (60)

Aalborg—Gothenburg

km	1770	☼	DDL Daily	1770	km
0	9.55	↘d Aalborg..... d↑	12.50	150	—
150	9.35	↙a Gothenburg..... a↘	11.10	0	—

Departure time in minutes () before the take-off of the aircraft.
Bus service: Aalborg: DDL, Jernbanegade 1 (40)
 Gothenburg: ABA-SILA, Trafikcentralen, Slussplatsen (60)

Stockholm—Malmö—Copenhagen

km	1775	1615	ABA DDL ☼	1615	1775	km
0	9.50	19.00	↘d Stockholm..... a↑	9.30	17.40	571
534	—	21.00	a Malmö..... d	7.30	—	—
—	—	21.20	d Malmö..... a	7.10	—	37
571	13.00	22.35	↙a Copenhagen..... d↘	7.55	16.30	0

Departure time in minutes () before the take-off of the aircraft.
Bus service: Stockholm: Flygpaviljongen, Nybroplan (45)
 Malmö: ABA-SILA, Central Station (30)
 Copenhagen: DDL, Dagmarhus, Vestre Boulevard 12 (50)

Malmö—Copenhagen

km	ABA/ DDL	Daily									
		1672	1673	1674	1675	1676	1677	1678	1679	1680	1681
0	d Malmö.	7.00	8.00	9.00	10.00	11.30	13.30	16.30	17.30	18.30	20.00
37	a Copenh.	8.15	9.15	10.15	11.15	12.45	14.45	17.45	18.45	19.45	21.15
0	d Copenh.	8.30	9.30	10.30	11.30	13.15	15.00	18.00	19.00	20.00	21.30
37	a Malmö.	7.45	8.45	9.45	10.45	12.30	14.15	17.15	18.15	19.15	20.45

Departure time in minutes () before the take-off of the aircraft.
Bus service: Malmö: ABA-SILA, Central Station (30)
 Copenhagen: DDL, Dagmarhus, Vestre Boulevard 12 (40)

Connections in Copenhagen

Dep. Copenhagen	Arr.	To/From	Dep.	Arr. Copenhagen
Sat 11.15	Sat 13.00	Amsterdam.....	D 12.15	D 15.50
a) 13.20	a) 15.05	Amsterdam.....	Mon 14.55	Mon 18.35
D 13.10	D 14.45	Amsterdam.....	a) 16.00	a) 19.40
Sat 11.05	Sat 14.05	Brussels.....	b) 10.30	b) 13.40
b) 14.10	b) 17.20	Brussels.....	Sat 14.50	Sat 17.40
Sat 11.15	Sat 16.25	Geneva.....	D 8.45	D 15.50
Wed 11.50	Wed 15.10	Geneva.....	Thu 10.30	Thu 15.40
D 13.10	D 18.30	Geneva.....	Mon 11.35	Mon 18.35
D 8.30	D 10.30	London.....	c) 10.40	c) 15.40
c) 16.45	c) 20.00	London.....	D 12.00	D 15.50
D 13.15	D 19.30	Marseille.....	D 12.20	D 20.10
Sat 11.15	Sat 19.00	Marseille.....	Mon 9.00	Mon 18.35
W 10.00	W 13.30	Paris.....	e) 14.30	e) 19.45
Mon 11.45	Mon 15.05	Prague.....	Mon 17.00	Mon 20.10
D 13.15	D 16.20	Zürich.....	D 15.05	D 20.10

a) Mon, Fri. b) Mon, Wed, Fri. c) Tue, Thu, Sat, S. e) D ex. Sat.

Stockholm—Reykjavik

km	1689	☼	ABA Appr. 2 serv. a month	1689	km
0	8.00	↘a Stockholm..... d↑	17.30	2383	—
2383	16.00	↙d Reykjavik..... a↘	6.00	0	—

Departure time in minutes () before the take-off of the aircraft.
Bus service: Stockholm: Flygpaviljongen, Nybroplan (75)
 Reykjavik: Lækjargötu 4 (60)



Amsterdam

Stockholm—Malmö—Copenhagen—Amsterdam

km	900 D	1600 Mon Fri	905 D	ABA: 1600 KLM: 900, 905	905 D	1600 Mon Fri	900 D	km
0	—	9.00	9.30	d Stockholm . . . a	17.30	21.55	—	1235
534	—	11.05	—	a Malmö d	—	19.55	—	—
—	8.30	11.35	—	d Malmö a	—	19.25	20.30	701
571	9.45	12.50	12.40	a Copenhagen d	16.20	20.10	21.15	—
—	10.15	13.20	13.10	d Copenhagen a	15.50	19.40	20.55	664
1235	11.55	15.05	14.45	a Amsterdam d	12.15	16.00	17.15	0

Departure time in minutes () before the take-off of the aircraft.

Bus service: Stockholm: Flygpaviljongen, Nybroplan (60)
 Malmö: Central Station (route 900) (45)
 Copenhagen: DDL, Dagmarhus, Vestre Boulevard 12 (60)
 Amsterdam: KLM, Leidsche Plein (60)

Booking offices — see page 3—4.

Fares — see page 22—23.

Information for passengers to the Netherlands

Visas. In addition to a valid passport, travellers to the Netherlands require a Dutch visa. This should be applied for at the Netherlands Consulate General, Holländaregatan 3, open 10—12 a. m., tel. 23 51 15. Two to four weeks are usually required to obtain a residence visa, a transit visa two days.

Currency. Swedish subjects may take at most Swers 99:- in cash. Rate of exchange: Swer 1:- = Dfl 0:63, Hfl. 1:- = Swer 1:58. Dfl. 50:- may be taken into the country in addition to an unlimited amount of USA dollars and Swiss francs. Foreign currency and securities can be changed at the banks up to Dfl. 30:- per day.

Cost of living. The cost of living in the Netherlands is at present 50 % higher than in Sweden.

Rationing and restaurants. Ration cards are obtainable at the »Hoofdkantoor der Distributie» in each city. The KLM travel bureau gives the necessary information. Ration cards are not needed in restaurants. There is comparatively good food in all restaurants but prices are high. The price for lunch is at least Dfl 2:50, and a good dinner costs Dfl 10:- to 25:-.

N. B. On arrival in Amsterdam a passenger possessing a return ticket must without exception **make certain** at the KLM travel bureau, Leidsche Plein, Amsterdam, tel. 38 883 that a seat has been reserved for the return journey **even if this has been confirmed before departure.**



Brussels

Stockholm—Copenhagen—Brussels

km	1009 Sun Thu	1605 Sat	ABA: 1605 SABENA: 1009	1605 Sat	1009 Sun Thu	km
0	14.30	7.30	d Stockholm a	19.10	13.30	1346
560	—	10.35	a Copenhagen . . . d	18.10	—	—
—	—	11.05	d Copenhagen . . . a	17.40	—	786
1346	21.30	14.05	a Brussels d	14.50	9.00	0

Departure time in minutes () before the take-off of the aircraft.

Bus service: Stockholm: Flygpaviljongen (60)
 Copenhagen: DDL, Dagmarhus (60)
 Brussels: Sabena, 145, Rue Royale . . . route 1605 (60)
 » 1009 (60)

Booking offices — see page 3—4.

Fares — see page 22—23.

Information for passengers to Belgium

Visas. In addition to a valid passport travellers to Belgium require a Belgian visa. This is applied for at the Belgian Legation, Villagatan 13 B, tel. 20 26 99, and usually takes about four days to be granted.

Currency. Belgian francs, official rate of exchange in Belgium Swer. 1:- = Bfres 10:60. Money can be exchanged only at the Institut du Change Belgo-Luxembourgeois, 10 Rue de la Banque.

Cost of living. Cost of living is considerably higher than in Sweden, especially as regards prices at hotels, restaurants and amusement centres.

Rationing and restaurants. Travellers receive from the local authorities ration cards for 10 days at a time on presentation of passport. Lunch or dinner amounts to Bfres 200:— — 500:—.

N. B. On arrival in Belgium a passenger possessing a return ticket must without exception **make certain** at SABENA, 145 Rue Royale, Brussels, tel. 18 10 00, that a seat has been reserved for the return journey **even if this has been confirmed before departure.**

The ABA-SILA office in Brussels is 145, Rue Royale, tel. 18 10 00, telegrams Swedair.



Geneva-Zürich

Stockholm—Copenhagen—Geneva

km	1625 Wed	✕ ABA	1625 Thu	km
0	8.15	d Stockholm a	17.10	1786
560	11.20	a Copenhagen d	16.10	—
—	11.50	d Copenhagen a	15.40	1226
1786	15.10	a Geneva d	10.30	0

Departure time in minutes () before the take-off of the aircraft.
Bus service: Stockholm: Flygpaviljongen, Nybroplan (60)
 Copenhagen: DDL, Dagmarhus (60)
 Geneva: Swissair, 16, Place Cornavin (45)

Malmö—Zürich

km	1089 Sun	✕ SWISSAIR	1089 Sun	km
0	13.05	d Malmö a	12.30	1317
1317	18.45	a Zürich d	6.50	0

Departure time in minutes () before the take-off of the aircraft.
Bus service: Malmö: ABA-SILA, Central Station (60)
 Zürich: Swissair, Hauptbahnhof, Hauptportal (60)

Booking offices — see page 3—4.

Fares — see page 22—23.

Information for passengers to Switzerland

Visas. In addition to a valid passport travellers to Switzerland also require a Swiss visa. This is applied for at the Swiss Legation, Blasieholmstorg 11, tel. 10 92 61, and usually takes about one or two days to be granted for a stay of up to three months.

Currency. Foreign currency may be taken in and out of Switzerland but no notes higher than S 20:—, £ 1:—, Frfres 100:— are allowed. Italian lire and German Mark must not be taken in or out of Switzerland.
Rationing and restaurants. Textiles and shoes are not rationed. Nearly all food is, however, rationed, with the exception of fruit, vegetables, coffee and tea. There is a lack of sugar, chocolate and butter. Travellers are advised to take extra sugar. The price for lunch or dinner is Swfres 3:50—10:—.

N. B. On arrival in Switzerland a passenger possessing a return ticket must without exception **make certain** at Swissair that a seat has been reserved for the return journey **even if this has been confirmed before departure.**

Swissair's office in Geneva: 16, Place Cornavin, Tel. 26 000

» » Zürich: Hauptbahnhof, Tel. 27 31 33.

The ABA-SILA office in Geneva is at the Hotel Cornavin, Geneva, tel. 28 030, telegrams Aerotransport.



Lisbon

Stockholm—Copenhagen—Amsterdam—Paris—Madrid—Lisbon

km	1645	✕ ABA appr. 2 serv. a month	1645	km
0	7.00	d Stockholm a	16.40	3535
560	10.20	a Copenhagen d	15.25	—
—	10.50	d Copenhagen a	14.55	2975
1224	12.35	a Amsterdam d	11.15	—
—	13.05	d Amsterdam a	10.45	2311
1664	14.55	a Paris d	9.00	—
—	3.00	d Paris a	18.35	1871
2997	15.15	a Madrid d	13.15	—
—	16.15	d Madrid a	12.15	538
3535	17.25	a Lisbon d	9.00	0

Departure time in minutes () before the take-off of the aircraft.

Bus service: Stockholm: Flygpaviljongen, Nybroplan (75)
 Copenhagen: DDL, Dagmarhus (60)
 Amsterdam: KLM, Leidsche Plein (60)
 Madrid: Iberia, 6 Antonio Maura (75)
 Lisbon: Aero Portuguesa Lda, Avenida da Liberdade 120 (60)

Booking offices — see page 3—4.

Fares — see page 22—23.

Information for passengers to Portugal and Spain

Visas. In addition to a valid passport, traveller to Portugal and Spain also require a Portuguese respectively a Spanish visa as well as a French transit visa. Applications are made at the Portugal's Consulate, Fredsgatan 2, tel. 10 43 33, the French Legation, Narvavägen 28, open 10.30—12.30 a. m., tel. 62 03 04, and at the Spanish Legation, Djurgården, open 11—13 a. m., tel. 62 54 94.

Currency. Swedish subjects may take at most Swers 99:— in cash. Rate of exchange: Swer 1:— = esc. 6:—, respectively pesetas c. 2:50.

Rationing and restaurants. There is no rationing system in Portugal. In the restaurants the food is first-class but very expensive. The price for an ordinary lunch or dinner is esc. 120:— to 140:—.

N. B. On arrival in Lisbon respectively Madrid a passenger possessing a return ticket must without exception **make certain** at Aero Portuguesa, Avenida da Liberdade 120, tel. 21 348, 21 349 respectively Iberia, 6 Antonio Maura, that a seat has been reserved for the return journey **even if this has been confirmed before departure.**

The ABA-SILA office in Lisbon is Avenida da Liberdade 120, tel. 21 348, telegrams Swedair.



London

Stockholm—Gothenburg—London

km	10Z D ex. Wed	1630 D	1630 D	ABA: 1630 ✕ BOAC: 9Z/10Z	1630 D	1630 D	9Z D ex. Wed	km
		until 14/7	from 15/7		until 14/7	from 15/7		
0	* 9.15	8.00	8.45	d Sthlm . . . a	21.45	21.40	* 15.15	1562
441	* 11.05	9.55	10.30	a Gothenb. d	20.00	20.00	* 13.30	—
—	11.35	10.15	11.00	d Gothenb. a	19.40	19.30	13.00	1121
1562	16.05	14.30	15.00	a London. d	15.30	16.00	9.00	0

* No local traffic on the stretch Stockholm—Gothenburg vice versa.

Departure time in minutes () before the take-off of the aircraft.

Bus service: Stockholm: Flygpaviljongen, Nybroplan
 for passengers to Gothenburg (35)
 » » to London (50)
 Gothenburg: ABA-SILA, Trafikcentralen, Slussplatsen
 for passengers to London (60)
 » » to Stockholm (40)
 London: Airways Terminal (ABA) . . (60 from 15/7)
 » » (BOAC) (90)

Booking offices — see page 3—4.

Fares — see page 22—23.

Information for passengers to Great Britain

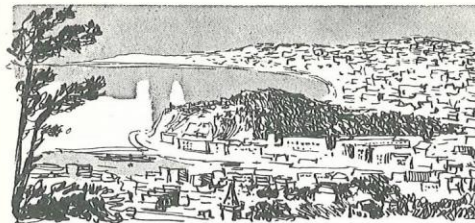
Visas. In addition to a valid passport travellers to England require a British visa. This should be applied for at the British Passport Office, Birger Jarlgatan 12, tel. 62 09 84, and usually takes about three weeks to be granted, but can in certain cases be obtained in a considerably shorter time. Previous regulations regarding exit permits for leaving England have now been cancelled.

Currency. Swedish subjects are not allowed to carry more than Swers 99:— and £ 10.— in notes. Travellers cheques for up to Swers 100:— per day or at most Swers 3000:— may be arranged through any bank.

Rationing and restaurants. Hotels and boarding-houses require ration cards for persons staying more than 4 days. Temporary cards may be obtained from the nearest Food Office. All food with the exception of bread, potatoes and vegetables is rationed. Ration cards are not needed in restaurants. Restaurants are over-crowded and tables should be booked at least one day in advance. Lunch before departure is served at the restaurant at Airways Terminal.

N. B. On arrival in London a passenger possessing a return ticket must without exception **make certain** at BOAC, Airways Terminal, Buckingham Palace Road, tel. VICToria 2323, that a seat has been reserved for the return journey **even if this has been confirmed before departure.**

The ABA-SILA office in London is 57, Grosvenor street, W. I. Tel. MAY-fair 2064, 2065, telegrams Swedair.



Nice

Stockholm—Copenhagen—Amsterdam—Geneva—Nice

km	1624 Sat	ABA ✕	1624 Mon	km
0	7.30	d Stockholm a	20.20	2479
560	10.50	a Copenhagen d	19.00	—
—	11.15	d Copenhagen a	18.35	1919
1224	13.00	a Amsterdam d	14.55	—
—	13.30	d Amsterdam a	14.25	1255
1933	16.25	a Geneva d	11.35	—
—	16.55	d Geneva a	11.05	546
2479	19.00	a Nice d	9.00	0

Departure time in minutes () before the take-off of the aircraft.

Bus service: Stockholm: Flygpaviljongen, Nybroplan (60)
 Copenhagen: DDL, Dagmarhus (60)
 Amsterdam: KLM, Leidsche Plein (60)
 Geneva: Swissair, 16, Place Cornavin (45)
 Nice: AFR, 16, Avenue Verdun (60)

Booking offices — see page 3—4.

Fares — see page 22—23.

Information for passengers to France

Visas. In addition to a valid passport travellers to France require a French visa which may be obtained through the French Legation, Narva-vägen 28, tel. 62 03 04.

Currency. There are no monetary restrictions on entering the country. Funds must be declared and entered into the passport on arrival at the airport.

Cost of living. A day's expenses in Stockholm of Swers 30:— correspond in Nice to about FFrs 1.500:—.

Rationing and restaurants. All food is rationed. Travellers are advised to take with them tea or coffee for breakfast in addition to sugar or saccharine and butter.

N. B. On arrival in Nice a passenger possessing a return ticket must without exception **make certain** at AFR, 16, Avenue de Verdun, tel. 84308, 87400, that a seat has been reserved for the return journey **even if this has been confirmed before departure.**

The ABA-SILA office in Nice is Hotel d'Angleterre, tel. 82 948, telegrams Swedair.



Paris

Stockholm—Malmö—Amsterdam—Paris

km	900 D	136		ABA/AFR: * 135/136 KLM:900	135		900 D	km
		ABA Mon Wed Fri	AFR		ABA Mon Wed Fri	AFR		
0	—	8.00	—	d Sthlm . a	20.15	—	—	1675
534	—	—	—	a Malmö . d	—	—	—	—
—	3.30	—	—	d Malmö . a	—	—	20.30	1141
571	9.45	—	—	a Copenh. d	—	—	21.15	—
—	10.15	—	—	d Copenh. a	—	—	20.55	1104
1235	11.55	—	—	a Amsterd. d	—	—	17.15	—
—	12.25	—	—	d Amsterd. a	—	—	16.45	440
1675	14.10	13.25	—	a Paris . d	15.00	—	15.00	0

Departure time in minutes () before the take-off of the aircraft.

Bus service: Stockholm: Flygpaviljongen, Nybroplan (60)
 Malmö: ABA-SILA, Central Station (route 900) (45)
 Copenhagen: DDL, Dagmarhus, Vestre Boulevard 12 (60)
 Amsterdam: KLM, Leidse Plein (60)
 Paris: AFR, La Gare des Invalides (90)

Booking offices — see page 3—4.

Fares — see page 22—23.

Information for passengers to France

Visas. In addition to a valid passport travellers to France require a French visa which may be obtained through the French Legation, Narva- vägen 28, tel. 62 03 04. For those intending only to pass through France a special transit visa is obtainable, with or without a visa for residence.

Currency. There are no monetary restrictions on entering the country. Funds must be declared and entered into the passport on arrival at the airport.

Cost of living. A day's expenses in Stockholm of Swers 30:— correspond in Paris to about Pfrcs 1.500:—.

Rationing and restaurants. All food is rationed. Travellers are advised to take with them tea or coffee for breakfast in addition to sugar or sacarine and butter.

N. B. On arrival in Paris a passenger possessing a return ticket must without exception **make certain** at Air France, 2, Rue Scribe, tel. Opéra 41—00, that a seat has been reserved for the return journey **even if this has been confirmed before departure.** The ABA-SILA office in Paris is 125¹, Avenue des Champs Elysées, tel. Balzac 04—28, telegrams Swedair.



Prague

Stockholm—Copenhagen—Prague

km	ABA 1612 Mon Thu	CSA 1424 Thu	*	CSA 1424 Thu	ABA 1612 Mon	km
560	11.05	—	a Copenhagen d	—	20.50	—
—	11.45	—	d Copenhagen a	—	20.10	884
1444	15.05	18.55	a Prague d	8.00	17.00	0

Departure time in minutes () before the take-off of the aircraft.

Bus service: Stockholm: Flygpaviljongen, Nybroplan (60)
 Copenhagen: DDL, Dagmarhus (60)
 Prague: CSA, Vodickova ulice 34 (80)

Booking offices — see page 3—4.

Fares — see page 22—23.

Information for passengers to Czechoslovakia

Visas. In addition to a valid passport travellers to Czechoslovakia also require a Czechoslovakian visa which may be obtained through the Czechoslovakian Legation, Nybrokajen 15, tel. 101731, and usually takes about a fortnight to be granted.

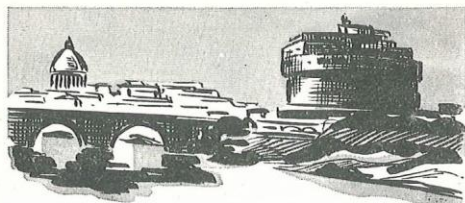
Currency. All funds must be declared at the boarder and entered in the passport. Travellers cheques are obtainable through the Riksbank in Stockholm and can be changed at any bank in Prague. There is a branch bank at the airport.

Rate of exchange: 1 Swedish crown = Kcs 11:88
 1 Dollar = » 50:—
 1 Pound = » 200:—

Cost of living. The cost of living is, generally speaking, 100 % higher than in Sweden.

Rationing and restaurants. Ration cards are obtained through the hotels after handing in your passport. Before cards are granted, certain hotels offer extra coupons. The price for lunch or dinner is about Kcs 100:—.

N. B. On arrival in Prague a passenger possessing a return ticket must without exception **make certain** at CSA, Vodickova ulice 34, tel. 38051/52, that a seat has been reserved for the return journey **even if this has been confirmed before departure.** The ABA-SILA office in Prague is Vodickova ulice 34, tel. 38051/52, telegrams Swedair.



Rome

Stockholm—Copenhagen—Amsterdam—Geneva—Rome

km	1626	✂ appr. 2 services a month	1626	km
0	7.00	d Stockholm a	20.55	2948
560	10.20	a Copenhagen d	19.40	—
—	10.50	d Copenhagen a	19.10	2388
1224	12.35	a Amsterdam d	15.30	—
—	13.05	d Amsterdam a	15.00	1724
1933	16.00	a Geneva d	12.10	—
—	16.30	d Geneva a	11.40	1015
2948	21.10	a Rome d	9.00	0

Departure time in minutes () before the take-off of the aircraft.

Bus service: Stockholm: Flygpaviljongen, Nybroplan (75)
Copenhagen: DDL, Dagmarhus (60)
Amsterdam: KLM, Leidsche Plein (60)
Geneva: Swissair, 16 Place Cornavin (45)
Rome: Albergo San Giorgio, via Reg. Giovanna di Bulgaria 61 (90)

Booking offices — see page 3—4.

Fares — see page 22—23.

Information for passengers to Italy

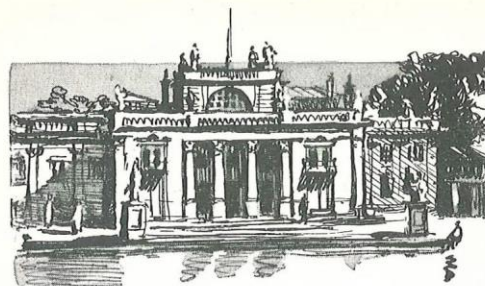
Visas. In addition to a valid passport passengers to Italy also require an Italian visa. This is applied for at the Italian Consulate, Skeppsbron 34, tel. 23 17 40. Visas will not be granted for tourist and recreation trips.

Currency. Swedish citizens are allowed to carry at most Swers 99:— in cash. An unlimited amount of dollars and Swiss francs may be taken. Rate of exchange: lire 100:— = Swers 2:10. All funds must be declared at the boarder and entered in the passport.

Cost of living. The cost of living is, generally speaking, considerably higher than in Sweden.

Rationing and restaurants. Rationing cards are not needed in restaurants. The price for lunch is about lire 600:—, for dinner about lire 800:—. The price for a room in the hotels is lire 700:—. Passengers are advised to apply at the Albergo San Giorgio, via Reg. Giovanna di Bulgaria 61.

N. B. On arrival in Rome a passenger possessing a return ticket must without exception **make certain** at ABA-SILA's office, Corso Trieste 45 tel. 868017, that a seat has been reserved for the return journey **even if this has been confirmed before departure.**



Warsaw

Stockholm—Warsaw

km	1610 Thu	✂ ABA	1610 Thu	km
0	10.30	d Stockholm a	19.10	866
866	15.10	a Warsaw d	16.30	0

Departure time in minutes () before the take-off of the aircraft.

Bus service: Stockholm: Flygpaviljongen, Nybroplan (60)
Warsaw: ABA-SILA, Hotel Polonia (75)

Booking offices — see page 3—4.

Fares — see page 22—23.

Information for passengers to Poland

Visas. In addition to a valid passport travellers to Poland require a Polish visa. This is applied for at the Polish Legation, Karlavägen 71, tel. 61 71 71, the formalities taking between 3 and 4 weeks. All non-Polish subjects must before leaving Poland themselves arrange their visas at the Polish Foreign Office, Al. Szucha 23.

Currency. Swedish crowns and American dollars can be changed.

Rate of exchange: 1 Swedish crown = Zloty 25:—
1 Dollar = » 100:—

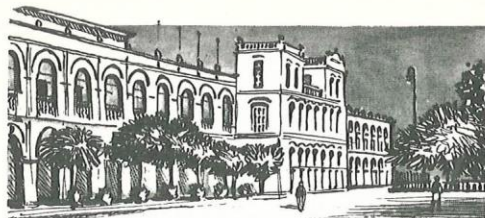
All funds must be declared at the National Bank in Warsaw and all further exchange must be made there.

Cost of living. A visitor usually spends about Zloty 1.500:— a day.

Rationing and restaurants. Foreigners are not subject to the rationing system which comprises rations of certain necessities at a lower price than that at which they are sold in the open market. The restaurants are innumerable. The price for breakfast is zloty 120:— — 160:— and for dinner zloty 500:—.

N. B. On arrival in Warsaw a passenger possessing a return ticket must without exception **make certain** at LOT, ul. Nowogrodzka 49, tel. 89560 that a seat has been reserved for the return journey **even if this has been confirmed before departure.**

The ABA-SILA's office, in Warsaw is Hotel Polonia, Al. Jerozolimskie 39, tel. 89760/61.



Addis Ababa

Stockholm—Amsterdam—Naples—Cairo—
Kharthoum—Addis Ababa

km	✕ SILA Two services a month *		km
0	7.00	d Stockholm a↑	18.45 7745
1206	11.20	a Amsterdam d	14.35 —
—	12.20	d Amsterdam a	13.35 6539
3047	19.40	a Naples d	8.00 —
—	9.00	d Naples a	13.25 4697
5052	15.50	a Cairo d	6.00 —
—	5.00	d Cairo a	15.55 2692
—	—	a Kharthoum d	10.10 —
—	—	d Kharthoum a	9.10 1025
7594	14.35	a Addis Ababa d	6.30 0

Departure time in minutes () before the take-off of the aircraft.
Bus service: Stockholm: Flygpaviljongen, Nybroplan (90)

* Priority line.

	Passengers		Excess luggage per kg.
Stockholm—Cairo	Swers	1.745:—	Sw. Crs 7:—
Stockholm—Addis Ababa	»	2.900:—	» 11:60

Only charter-flights on this line

For further informations of days and times of departure, please apply to the SILA head office, Kommendörgatan 9, Stockholm, tel. 67 10 81.



New York

Stockholm—New York

km	AA Sun.	SILA *	AA SILA	SILA *	AA Sat.	km
0	9.30	—	d Stockholm a↑	—	16.50	7396
396	11.00	—	a Oslo d	—	15.25	—
—	11.30	—	d Oslo a	—	14.40	7000
913	14.15	—	a Copenhagen d	—	13.55	—
—	14.45	—	d Copenhagen a	—	13.25	6483
2348	—	—	Shannon	—	—	5048
5532	—	—	Gander	—	—	1864
7396	8.10	—	a New York d	—	10.00	0

* For the time being this line is operated only as a mail line.

Passengers are carried only as an exception.

For further information of days and times of departure, apply to the offices of ABA-SILA, travel bureaux or agencies.

Departure time in minutes () before the take-off of the aircraft.

Bus service: Stockholm: American Airlines, Jacobstorg 1 . . . (60)
New York: Airlines Terminal, 80 E, 42nd St. . . (120)

To our passengers

In July SILA's route Stockholm—New York will be operated only as a mail-line — in august SILA will start, in cooperation with the Danish and Norwegian airline companies, regular traffic for passengers to North-America. These flights will be inaugurated by the introduction of SILA's new aircraft — Douglas DC-4.

Later we open a regular airroute once a week to Rio de Janeiro. The line is operated on the following route: Stockholm—Paris—Lisbon—Dakar—Natal—Rio de Janeiro.

Apply to one of our ticket offices, they are entirely at your service, and you can book your seat there.

Tariffs

Section	Passengers			Section	Passengers		
	Single	Return	Excess luggage per kg.		Single	Return	Excess luggage per kg.
Aalborg to:	Dcra.	Dcra.	Dcra.	London	338.—	608.—	3:40
Copenhagen	55.—	100.—	0:55	Luleå	133.—	239:40	1:30
Gothenburg	45.—	82.—	0:45	Malmö	45.—	81.—	0:45
Oslo	95.—	172.—	0:95	Oslo	52.—	94.—	0:50
				Stockholm	62.—	111:60	0:60
Amsterdam to:	Dfl.	Dfl.	Dfl.	Sundsv./Härn.	96.—	172:80	0:95
Brussels	29.—	52.—	0:30	Visby	107.—	192:60	1:05
Copenhagen	150.—	270.—	1:50				
Geneva	148.—	266.—	1:50	Lisbon to:	Esc.	Esc.	Esc.
Lisbon	340.— ¹⁾	612.— ¹⁾	3:40	Amsterdam	3.180.— ¹⁾	5.724.— ¹⁾	31:80
London	85.—	153.—	0:85	London	2.600.— ¹⁾	4.680.— ¹⁾	26:00
Malmö	157.—	283.—	1:55	Paris	2.400.— ¹⁾	4.320.— ¹⁾	24:00
Oslo	171.—	308.—	1:70	Stockholm	5.370.— ¹⁾	9.666.— ¹⁾	53:70
Paris	70.—	126.—	0:70				
Prague	138.—	248.—	1:40	London to:	£	£	£
Stockholm	202.—	364.—	2:00	Amsterdam	8.—	14. 8.—	1/7
Zürich	132.—	238.—	1:30	Brussels	6.—	10.16.—	1/2
				Copenhagen	19. 8.—	34.18.—	3/11
Brussels to:	Bfrs.	Bfrs.	Bfrs.	Geneva	14.—	25. 4.—	2/10
Amsterdam	475.—	855.—	4:75	Gothenburg	20.—	36.—	4/—
Copenhagen	2.950.—	5.310.—	29:50	Lisbon	26.— ¹⁾	46.16.— ¹⁾	5/2
London	1.050.—	1.890.—	10:50	Malmö	20.—	36.—	4/—
Malmö	3.075.—	5.535.—	30:75	Oslo	21.—	37.16.—	4/2
Paris	625.—	1.125.—	6:25	Paris	7.—	12.12.—	1/5
Stockholm	3.825.—	6.885.—	38:25	Prague	18.—	32. 8.—	3/7
				Stockholm	24.—	43. 4.—	4/10
Copenhagen to:	Dcra.	Dcra.	Dcra.	Zürich	15.—	27.—	3/—
Aalborg	55.—	100.—	0:55				
Amsterdam	275.—	496.—	2:75	Luleå to:	Swrcs.	Swrcs.	Swrcs.
Brussels	325.—	586.—	3:25	Gothenburg	133.—	239:40	1:30
Geneva	514.—	926.—	5:15	Malmö	140.—	252.—	1:40
Gothenburg				Stockholm	93.—	167:40	0:90
(direct)	56.—	100.—	0:55	Sundsv./Härn.	59.—	106:20	0:55
Gothenburg							
(via Malmö)	64.—	116.—	0:65	Madrid to:	Pes.	Pes.	Pes.
London	375.—	676.—	3:75	Stockholm	2.080.— ¹⁾	3.744.— ¹⁾	20:80
Malmö	12.—	22.—	0:25				
Marseille	510.—	918.—	5:10	Malmö to:	Swrcs.	Swrcs.	Swrcs.
Oslo	107.—	194.—	1:05	Amsterdam	250.—	450.—	2:50
Paris	395.—	712.—	3:95	Brussels	295.—	531.—	2:95
Prague (direct)	325.—	586.—	3:25	Copenhagen	10.—	18.—	0:20
Stockholm	95.—	172.—	0:95	Gothenburg	45.—	81.—	0:45
Zürich 2)	375.—	676.—	3:75	London	338.—	608.—	3:40
				Luleå	140.—	252.—	1:40
Geneva to:	Swfrs.	Swfrs.	Swfrs.	Paris	355.—	639.—	3:55
Amsterdam	240.—	432.—	2:40	Stockholm	70.—	126.—	0:70
Brussels	160.—	288.—	1:60	Sundsv./Härn.	103.—	185:40	1:—
Copenhagen	460.—	828.—	4:60	Visby	115.—	207.—	1:15
London	240.—	432.—	2:40	Zürich 2)	430.—	774.—	4:30
Malmö	471.—	848.—	4:70				
Nice	133.—	239.—	1:35	New York to:	\$	\$	\$
Paris	120.—	216.—	1:20	Stockholm	405.—	730:70	4:05
Rome	267.—	481.—	2:65				
Stockholm	543.—	977.—	5:45				
				Nice to:	Ffrcs.	Ffrcs.	Ffrcs.
Gothenburg to:	Swrcs.	Swrcs.	Swrcs.	Geneva	3.700.—	6.660.—	37:—
Aalborg	40.—	72.—	0:40	Stockholm	17.860.—	32.148.—	179:—
Copenhagen							
(direct)	49.—	88.—	0:50	Oslo to:	Ners.	Ners.	Ners.
Copenhagen				Aalborg	98.—	176.—	1:—
(via Malmö)	55.—	99.—	0:55	Amsterdam	320.—	576.—	3:20

1) Additional tax on journeys to and from Portugal and Spain. 2) Route 1089.

Tariffs

Section	Passengers			Section	Passengers		
	Single	Return	Excess luggage per kg.		Single	Return	Excess luggage per kg.
Copenhagen	110.—	198.—	1:10	Madrid	787.— ¹⁾	1.417.— ¹⁾	7:90
Gothenburg	62.—	112.—	0:60	Malmö	70.—	126.—	0:70
London	420.—	756.—	4:20	New York	1.701.—	3.069.—	17:—
Paris	445.—	801.—	4:45	Nice	627.—	1.129.—	6:25
Stockholm	82.—	148.—	0:80	Oslo	70.—	126.—	0:70
Zürich	500.—	900.—	5:—	Paris	425.—	765.—	4:25
Örebro	60.—	108.—	0:60	Prague	425.—	765.—	4:25
				Reykjavik	690.—	1.242.—	6:90
				Rome	767.—	1.381.—	7:65
Paris to:	Ffrcs.	Ffrcs.	Ffrcs.	Sundsv./Härn.	28.—	50.—	0:55
Amsterdam	2.800.—	5.040.—	28:—	Visby	45.—	81.—	0:45
Brussels	1.500.—	2.700.—	15:—	Warsaw	239.—	430.—	2:40
Copenhagen	9.800.—	17.640.—	98:—	Örebro	37.—	66:60	0:40
Geneva	2.900.—	5.220.—	29:—				
London	3.360.—	6.048.—	34:—				
Malmö	10.100.—	18.180.—	101:—	Sund./Härn. to:	Swrcs.	Swrcs.	Swrcs.
Oslo	10.500.—	18.900.—	105:—	Gothenburg	96.—	172:80	0:95
Prague	7.000.—	12.600.—	70:—	Luleå	59.—	106:20	0:55
Stockholm	12.100.—	21.780.—	121:—	Malmö	103.—	185:40	1:—
Zürich	3.400.—	6.120.—	34:—	Stockholm	56.—	100:80	0:55
				Visby	101.—	181:80	1:—
Prag to:	Kcs.	Kcs.	Kcs.				
Amsterdam	2.600.—	4.680.—	26:—	Visby to:	Swrcs.	Swrcs.	Swrcs.
Copenhagen	3.370.—	6.066.—	33:70	Copenhagen	125.—	225.—	1:25
London	3.600.—	6.480.—	36:—	Gothenburg	107.—	192:60	1:05
Paris	2.900.—	5.220.—	29:—	Malmö	115.—	207.—	1:15
Stockholm	5.100.—	9.180.—	51:—	Stockholm	45.—	81.—	0:45
Zürich	2.250.—	4.050.—	22:50	Sundv./Härn.	101.—	181:80	1:—
Reykjavik to:	lcrs.	lcrs.	lcrs.	Warsaw to:	Swrcs.	Swrcs.	Swrcs.
Stockholm	1.070.—	1.926.—	10:70	Stockholm	239.—	430.—	2:40
Rome to:	Lire	Lire	Lire	Zürich to:	Swfrs.	Swfrs.	Swfrs.
Geneva	14.200.—	25.560.—	140:—	Amsterdam	215.—	387.—	2:15
Stockholm	42.000.—	75.600.—	420:—	Copenhagen	335.—	603.—	3:35
				London	255.—	459.—	2:55
Stockholm to:	Swrcs.	Swrcs.	Swrcs.	Malmö 2)	441.—	794.—	4:40
Amsterdam	320.—	576.—	3:20	Oslo	433.—	779.—	4:35
Brussels	365.—	657.—	3:65	Paris	140.—	252.—	1:40
Copenhagen	80.—	144.—	0:80	Prague	195.—	351.—	1:95
Geneva	529.—	952.—	5:30				
Gothenburg	62.—	111:60	0:60	Örebro to:	Swrcs.	Swrcs.	Swrcs.
Lisbon	895.— ¹⁾	1.611.— ¹⁾	8:95	Oslo	50.—	90.—	0:50
London	400.—	720.—	4:—	Stockholm	37.—	66:60	0:40
Luleå	93.—	167:40	0:90				

1) Additional tax on journeys to and from Portugal and Spain. 2) Route 1089.

Send by air

— with the modern, rapid air-craft. The ABA-SILA air-planes are operating regular services to almost all European capitals — but also to USA and Rio de Janeiro — and they all take air-freight.

For information and plans apply to the ABA-SILA offices or authorized freight-agents.