

WELCOME TO SWEDEN

HOTELS

Swedish hotels are first class and can offer comfort and enjoyment to meet the most exacting demands. For the present the hotels are heavily booked up. We therefore advise you to reserve accommodation before departure. If you should have difficulty in obtaining rooms on your arrival at Stockholm, get in touch with Hotellcentralen (Hotel Room Booking Service) at Gustav Adolfstorg 18, Stockholm, telephone 11 12 13. The bureau will do its utmost to help you and to satisfy your needs. The hotels arrange all police formalities within 24 hours of your arrival.

MONEY

The simplest means of arranging funds for your stay in Sweden is to procure letters of credit, travellers' cheques or payment orders, obtainable through any bank. The banks also fix the sum which the traveller is authorized to take with him. As a rule, the Swedish authorities do not allow the tourist to change currency to the value of over one hundred Swedish crowns per day.

COST OF LIVING

Price-control has been instituted for some time, and applies to nearly all foodstuffs and everyday necessities. As a result, prices have not increased to any great extent during the war years. There is an abundance of goods.

RATIONING

The Swedish authorities have decided to continue for some time the rationing of certain foodstuffs, as well as of soap. In Stockholm ration cards for food are obtainable at Stockholms Kristidsnämnd (Food Office) at Vasagatan 11-13, on presenting a passport. Ration cards for the first 4 days can be obtained from the customs officials on arrival in Sweden. In restaurants coupons are required for bread, butter and certain meats.

COMMUNICATIONS

The most rapid means of communication in Sweden is ABA air lines. Daily services are run between the following places:

Stockholm—Gothenburg

» —Malmö

» —Visby

» —Karlstad

Gothenburg—Malmö

The Swedish railway network is considered to be one of the finest in Europe. The trains are rapid, have ultra-modern carriages and first class service. Within the town of Stockholm the communications consist of trams and electric trolley-buses which run practically all day and night. Petrol is unrationed in Sweden and there is an abundance of taxis at a moderate tariff.

Tips: As a general rule 10 % is given. This is also applicable to taxi fares. Cloak-room: 25 öre.

INFORMATION

CHECKING OF RETURN TICKETS

On arrival in the country from which the return journey is to be made, a passenger possessing a return ticket must without exception make certain at the travel bureau in question that a seat has been reserved for the return journey *even if this has been confirmed before departure*. The addresses of ABA's booking offices abroad may be found on pages 27-28.

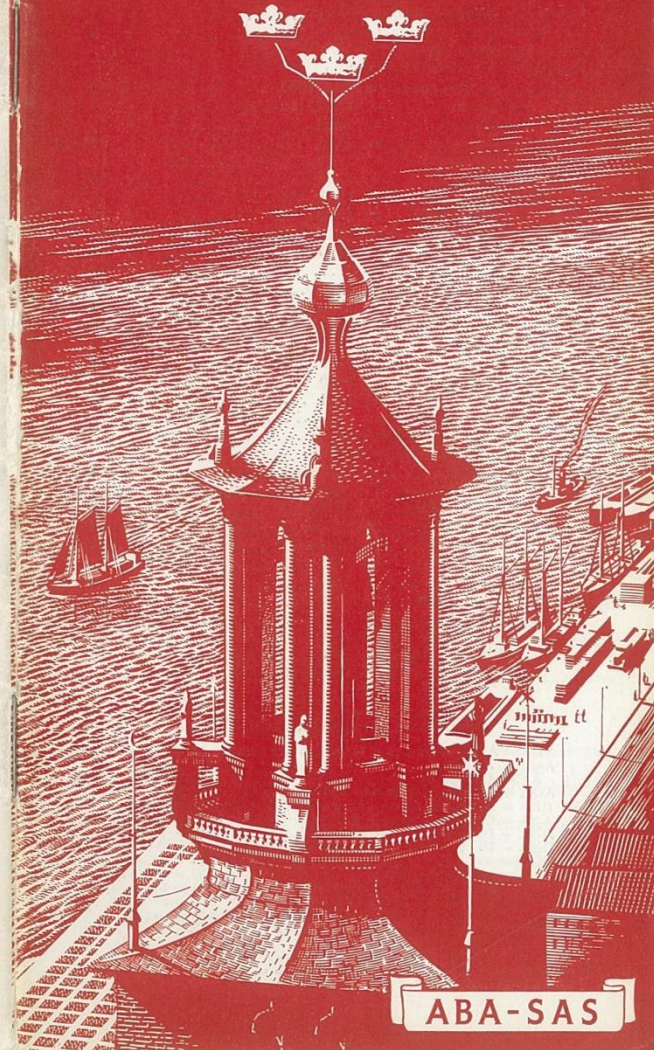
ABA's OFFICES ABROAD

In the majority of places to which ABA flies the company has its own offices. ABA representatives abroad will be glad to help you and give you information and advice. The addresses of these offices are on pages 3 and 4.

SWEDISH AIR LINES

TIMETABLE DECEMBER 1947

Our motto: Safety first!



ABA-SAS

Table of contents

Abbreviations and Symbols	page	2
Swedish Air Lines Travel Bureaux in Sweden	»	3
Swedish Air Lines Cargo Departments in Sweden	»	3
Swedish Air Lines Offices Abroad	»	3—4
Comparative International Times	»	4
General Information	»	5
Route Map of Swedish Air Lines Services	»	18—19
Booking Offices	»	27—28
Fares	»	28—35
Swedish Inland and Scandinavian Services		
Stockholm—Gothenburg	»	6
Stockholm—Malmö	»	6
Stockholm—Visby	»	6
Gothenburg—Malmö	»	6
Stockholm—Karlstad—Oslo	»	7
Oslo—Gothenburg— <u>Aalborg/Aarhus</u> —Copenhagen ..	»	7
Stockholm—Malmö—Copenhagen	»	8
Malmö—Copenhagen local traffic	»	9
Swedish European Services		
Stockholm/Oslo/Gothenburg/Malmö		
—Amsterdam Route 903, 1600	»	10
—Athens » 1627, 1628, 1629	»	23
—Brussels » 1605	»	11
—Frankfurt » 1623, 1624, 1627, 1628	»	12—13
—Geneva » 1623, 1627—1629, 1693	»	12
—Glasgow » 1690	»	16
—Hamburg » 1605, 1623, 1624	»	14
—Helsingfors » 1631, 1640	»	17
—Lisbon » 1645, 1693	»	15, 26
—London » 1630	»	16
—Mariehamn	»	17
—Moscow » 1640	»	17
—Nice » 1623	»	20
—Paris » 135/136, 1645	»	21
—Prague » 1612	»	22
—Rome » 1627, 1628, 1629	»	23
—Warsaw » 1610	»	24
—Zürich » 1624	»	13
—Åbo	»	17
Swedish Intercontinental Services		
Stockholm/Oslo/Gothenburg/Malmö		
—Ankara Route 1628	»	23
—Baghdad » 1628	»	23
—Buenos Aires » 1693	»	26
—Dakar » 1693	»	26
—Gander » 1690	»	25
—Istanbul » 1629	»	23
—Lydda » 1627	»	23
—Montevideo » 1693	»	26
—Natal » 1693	»	26
—New York » 1690	»	25
—Rio de Janeiro » 1693	»	26
—Teheran » 1627, 1628	»	23

Explanation of abbreviations and symbols

ABA = AB Aerotransport (Swedish Air Lines)	✕ = Stewardservice
Aero = Aero O/Y	
AF = Air France	D = Daily
AOA = American Overseas Airlines	W = Weekdays
BEA = British European Airways	S = Sundays
CSA = Československe Aerolinie	Mon = Mondays
DDL = Det Danske Luftfartselskab AS	Tue = Tuesdays
DNL = Det Norske Luftfartselskab AS	Wed = Wednesdays
KLM = Koninklijke Luchtvaart	Thu = Thursdays
Maatschappij NV	Fri = Fridays
LOT = Polskie Linie Lotnicze »Lob»	Sat = Saturdays
SABENA = Société Anonyme Belge d'Exploitation	a = arrive
de la Navigation Aérienne	d = depart
SAS = Scandinavian Airlines System	
(DDL, DNL, SILA)	
SILA = Swedish Intercontinental Airlines	
SWISSAIR = Schweizerische Luftverkehr A. G.	

Swedish Air Lines Head Offices in Stockholm

- AB Aerotransport, ABA,** ABA Building, Nya Ulvsundavägen 193, Bromma, tel. 28 90 00. Telegrams: Swedair.
Scandinavian Airlines System, SAS, Östervägen 2—4, Råsunda, tel. 27 27 90. Telegrams: Sasair.
Swedish Intercontinental Airlines, SILA, Östervägen 2—4, Råsunda, tel. 27 27 90. Telegrams: Silabolag.

Swedish Air Lines Travel Bureaux in Sweden

- Gothenburg:** Trafikcentralen, Slussplatsen 2. (D 6.30—21). Tel. 17 49 00. Telegrams Airticket.
Luleå: Travel Bureau, Tullgatan 16. (W9—12, 13—17, Sat 9—14). Tel. 4080, 4780. Telegrams Swedair.
Stockholm: Flygcity, Norrmalmstorg 1 and Flygcentralen, Kungsgatan 18. (W 9—17, Sat 9—16). Tel. 23 37 20. Telegrams Airticket.
Visby: Travel Bureau, Strandgatan 28. (W 9—17.30, S 15—17.30). Tel. 23 98, 23 99. Telegrams Swedair.

Swedish Air Lines Cargo Departments in Sweden

- Gothenburg:** Torslanda Airport. Tel. Torslanda 96. Telegrams Abaline. Trafikcentralen, Slussplatsen 2. Tel. 17 49 00. Telegrams Airticket.
Karlstad: Karlstad Airport. Tel. 17 200. Telegrams Abaline.
Luleå: Tullgatan 16. Tel. 4080, 4780. Telegrams Swedair.
Malmö: Bulltofta Airport. Tel. 7 12 90. (After closing time 111 48). Telegrams Abaline.
Stockholm: Birger Jarlsgatan 55. (W 8—19, Sat. 8—17). Tel. 23 37 20, 10 38 30. Telegrams Airfreight. Bromma Airport. (D 7—21). Tel. 28 25 60. Telegrams Abaline.
Visby: Strandgatan 28. Tel. 23 98, 23 99. Telegrams Swedair. Visby Airport. Tel. 2400. Telegrams Abaline.

Swedish Air Lines Offices Abroad

For reservations of seats — see pages 27—28 Booking offices.

- Amsterdam:** ABA, Vondelstraat 65, Amsterdam, Netherlands. Tel. 88 280. Telegrams: Swedair.
Ankara: ABA, Isveç Hava Yollari, Selanik Caddesi nr. 62, Yenisehir, Ankara, Turkey. Tel. 5535. Telegrams: Swedair.
Athens: ABA, Venizelos Avenue 16, Athens, Greece. Tel. 32-211. Telegrams: Swedair.
Barcelona: ABA, Avda. Generalísimo Franco 598—4º 2ª, Barcelona, Spain. Tel. 83 449. Telegrams: Swedair.
Basel: ABA c/o Swissair, Centralbahnplatz 3, Basel, Switzerland. Tel. 23 800. Telegrams: Abaline.
Brussels: ABA, 60, Rue Ravenstein, Bureaux 409—409A, Brussels, Belgium. Tel. 11 40 13. Telegrams: Swedair.
Buenos Aires: SAS, Avda. Pte R. S. Pena 728, Buenos Aires, Argentina. Tel. 34-9369. Telegrams: Sasair.
Cairo: SILA, Swedish Consulate, 25 Shah Adly Pacha, Cairo, Egypt. Tel. 50 260. Telegrams: Swedair.
Copenhagen: ABA, Københavns Lufthavn, **Kastrup**, Denmark. Tel. Kastrup 1212. Telegrams: Swedair.
Frankfurt: ABA, Rhine-Main Airport, **Frankfurt on Main**, Germany. Tel. 33 145, extension 347. Telegrams: Abaline.
Geneva: ABA, Aéroport Cointrin, **Geneva**, Switzerland. Tel. 898 00. Telegrams: Aerotransport.
Hamburg: ABA, Fuhlsbüttel Airport, **Hamburg**, Germany. Tel. 59 55 41, extension 218. Telegrams: Abaline.
Helsingfors: ABA, Malm Airport, **Helsingfors**, Finland. Tel. 02691. Telegrams: Swedair.
Istanbul: ABA, Isveç Hava Yollari, c/o Antalya Han, Sirkeci, **Istanbul**, Turkey. Tel. 24 220. Telegrams: Swedair.
Lisbon: ABA-SAS, 120 Avenida da Liberdade, **Lisbon**, Portugal. Tel. 31 128, 31 129. Telegrams: Swedair.

London:	ABA—SAS Travel Bureau, 185 Regent Street, London W. 1., England. Tel. REGent 6777. Telegrams: Swedair. Administrative Office: 16 Upper Grosvenor Street, London W. 1., England. Tel. REGent 6777. Telegrams: Swedair.
Madrid:	ABA, Calle de Gurtubay 4, Madrid, Spain. Tel. 267032. Telegrams: Swedair.
Moscow:	ABA, Swedish Legation, Ul. Voroskovo 44, Moscow, U.S.S. R. Tel. K 43025, K 430 26. Telegrams: Legasuede.
New York:	SAS, 270 Park Avenue, New York 17. N. Y., USA. Tel. Plaza 301727. Telegrams: Nysasair.
Nice:	ABA, 7, Avenue de Suède, Nice, France. Tel. 879-51, 879-52, 879-53, 879-54. Telegrams: Swedair.
Paris:	ABA, 125, Avenue des Champs Elysées, Paris 8e, France. Tel. BALzac 04—28, 41—42. Telegrams:Swedair.
Prague:	ABA, Vodickova ulice 34, Prague II, Czechoslovakia. Tel. 398-65. Telegrams: Swedair.
Rio de Janeiro:	SAS, 277 Avenida Rio Branco, Rio de Janeiro, Brazil. Tel. 22-2870. Telegrams: Sasair.
Rome:	ABA, 45 Corso Trieste, Rome, Italy. Tel. 868017. Telegrams: Swedair.
Teheran:	ABA, c/o Levantour Corp., Maidan Ferdowcy, Teheran. Iran. Tel. 5517. Telegrams: Swedair.
Warsaw:	ABA, Hotel Polonia, Al. Jerozolimskie 39, Warsaw, Poland. Tel. 897 60, 897 61. Telegrams: Swedair.
Zürich:	ABA, Bahnhofstrasse 13, Zürich, Switzerland. Tel. 27 11 94, 27 11 95. Telegrams: Aerotransport.

Comparative International Times.

When it is 12 noon in Sweden

it is in Argentina	8	a. m.
" " Belgium	12	noon
" " Brazil	8	a. m.
" " Czechoslovakia	12	noon
" " Denmark	12	noon
" " Egypt	1	p. m.
" " Finland	1	p. m.
" " France	12	noon
" " French West Africa	11	a. m.
" " Germany	12	noon
" " Great Britain	11	a. m.
" " Greece	1	p. m.
" " Holland	12	noon
" " Iraq	2	p. m.
" " Iran	2.30	p. m.
" " Italy	12	noon
" " Newfoundland	7.30	a. m.
" " Norway	12	noon
" " Palestine	1	p. m.
" " Poland	12	noon
" " Portugal	11	a. m.
" " Russia (Moscow)	2	p. m.
" " Spain	12	noon
" " Switzerland	12	noon
" " Turkey	1	p. m.
" " Uruguay	8	a. m.
" " U. S. A. (la Guardia)	6	a. m.

Air pressure changes on the ears.

When the aircraft gains height, the change of pressure within the ears does not correspond with that of the surrounding air. When, therefore, the plane gains or loses height, travellers should swallow repeatedly. In spite of this precaution, however, an unpleasant feeling may sometimes be experienced in the ears, and the sound of the engines becomes less distinct. This sensation should not be ignored, especially when descending. Close the nostrils with the fingers, keep the mouth shut, and blow outwards as if blowing the nose, or else yawn slowly 4—5 times. After this procedure, further discomfort will rarely be experienced.

General Information

All times and fares in this timetable are given without liability as they are subject to sudden changes. **Before starting on a flight, therefore, the passenger should always enquire regarding the current timetable at ABA or SAS, a travel bureau or other agency authorized by ABA or SAS.**

The 24-hour system is used in this timetable, thus: 12.00 is 12 noon 18.00 is 6 p. m. 21.00 is 9 p. m.
All times quoted are local times.

Transport regulations. The conveyance of passengers, luggage and goods by air is effected in accordance with the regulations of the Warsaw Convention and subject to the liability laid down in the Law relating to transport by aircraft.

Timetables. ABA and SAS assume no liability for the times of arriving and departing aircraft being strictly adhered to.

Arrival at embarkation points. Passengers who wish to be transported to the airport by ABA and SAS should arrive at the terminal dispatch office at least 15 minutes before the departure of the bus or car. Passengers who do not avail themselves of the bus or car services should be at the counter of the airport office in time to permit the completion of governmental and other requirements: on Swedish internal lines 15 minutes, on European lines at least 30 minutes and on intercontinental lines at least 45 minutes before the scheduled departure of the aircraft. Those who arrive later cannot claim transport or repayment of fare.

Validity of tickets. Undated single tickets: 12 months from date of issue. As from 1st December, 1947 **return tickets** and tickets made out for **circular trips or open-jaw rebate** will be valid for 12 months from date of issue.

Exception. On ABA's internal services as well as on the route Malmö—Copenhagen, tickets with the above-mentioned rebates are valid for 6 months from date of issue.

Children under 2 years accompanied by an adult and not occupying a separate seat are carried at 10 % of the adult fare; children over 2 and under 12 years are carried at 50 % of the adult fare.

Baggage. Passengers including children carried at 50 % of the fare are permitted the following free baggage allowances:

a) on lines where a single fare is not less than Sw. cr. 730:—
(£ 50) 20 kgs. (44 lb)

b) on lines where a single fare is Sw. cr. 730:— or more
(£ 50) 30 kgs. (66 lb).

Children carried at 10 % of fare are entitled to no free baggage allowance.

Baggage in excess of the free allowance will be charged for at published excess baggage rates.

Only 30 kg (66 lb) of baggage are guaranteed transport by the same service as the passenger.

Photographic apparatus. Most countries forbid photographs being taken from the air. Cameras unless they are locked away in baggage therefore have to be handed to one of the Company's officials before embarkation. They will be returned on arrival at the destination.

Reservations of seats are made by the ABA and SAS offices, travel bureaux or other agencies authorized by ABA and SAS. Applications for accommodation on inland lines and those to Oslo, Copenhagen, Aarhus and Aalborg should be made not more than one month prior to departure, foreign lines not more than 2 months and transatlantic lines not more than one year. For booking offices see pages 27—28.

Cancellations. If cancellation effected more than 48 hours before scheduled departure: no fee.

If cancellation effected 48 hours or less before scheduled departure: no refund unless the service has not been fully booked or the seat is resold.

Break of journey is permitted on through fares on European services. Further particulars are obtainable at the booking office.

N. B. On intercontinental services special information is applicable. For further information apply to the ABA and SAS offices, travel bureaux or other agencies authorized by ABA and SAS.

Swedish Inland and Scandinavian services

Booking offices — see pages 27—28. Fares — see pages 28—35.

Luleå—Sundsvall/Härnösand—Stockholm

Service suspended.

Stockholm—Gothenburg

km	ABA 1630 Mon Tue Fri Sat S	ABA 1650A D	ABA 1650B D	✕	ABA 1650B D	ABA 1650A D	ABA 1630 Mon Tue Fri Sat S	km
0	8.45	11.00	18.40	✕	10.35	15.00	22.45	413
413	10.40	12.55	20.35	✕	8.50	13.15	21.00	0

Bus departure () min. before the take-off of the aircraft.

Stockholm: ABA, Flygpaviljongen, Nybroplan (35)

Gothenburg: ABA, Trafikcentralen, Slussplatsen 2 (40)

Stockholm—Malmö

km	ABA 1624 Mon Tue Wed Thu Sat	ABA 1654 D	ABA 1615 D	✕	ABA 1615 D	ABA 1654 D	ABA 1624 Tue Wed Thu Fri S	km
0	6.55	13.15	20.00	✕	9.40	12.55	18.15	516
516	9.10	15.30	22.15	✕	7.30	10.45	16.05	0

Bus departure () min. before the take-off of the aircraft.

Stockholm: ABA, Flygpaviljongen, Nybroplan (35)

Malmö: ABA, Central Station (20)

Stockholm—Visby

km	ABA 1633 D	✕	ABA 1633 D	km
0	15.35	✕	17.55	205
205	16.35	✕	16.55	0

Bus departure () min. before the take-off of the aircraft.

Stockholm: ABA, Flygpaviljongen, Nybroplan (35)

Visby: ABA, Travel Bureau, Strandgatan 28 (30)

Gothenburg—Malmö

km	ABA 1652A D	ABA 1652B D	✕	ABA 1652B D	ABA 1652A D	km
0	7.50	21.10	✕	8.10	22.40	250
250	9.05	22.25	✕	7.00	21.30	0

Bus departure () min. before the take-off of the aircraft.

Gothenburg: ABA, Trafikcentralen, Slussplatsen 2 (40)

Malmö: ABA, Central Station (20)

Stockholm—Karlstad—Oslo

km	SAS 1690 Mon Thu Sat	DNL 1714 D	✕	SAS 1690 Wed Fri S	DNL 1714 D	km
0	16.00	17.00	✕	14.00	16.25	461
264	18.15	18.15	✕	15.10	15.10	—
—	18.35	18.35	✕	14.50	14.50	197
461	17.45	19.25	✕	12.15	14.00	0

Bus departure () min. before the take-off of the aircraft.

Stockholm: ABA, Flygpaviljongen, Nybroplan (45, route 1690 75)

Karlstad: ABA, Stadshotellet (20)

Oslo: DNL, Tordenskjoldsgate (50, route 1690 135)

Oslo—Gothenburg—Aalborg/Aarhus—Copenhagen

✕	ABA/ DDL 1652A 1760 D	DDL 1715 D	DDL 1777 Mon Thu Sat	DDL 1773 Tue Wed Fri S	BEA 682 Tue Sat	BEA 687 Tue Thu S	ABA 1652B/ 1670 D
✕	—	7.05	11.25	11.25	—	15.25	—
✕	—	8.20	12.40	12.40	—	16.40	—
✕	7.50	8.35	13.00	13.00	15.25	—	21.10
✕	—	—	—	13.45	—	—	—
✕	—	—	—	14.15	—	—	—
✕	—	—	14.00	—	—	—	—
✕	—	—	14.30	—	—	—	—
✕	9.05	—	—	—	—	—	22.25
✕	9.30	—	—	—	—	—	23.00
✕	9.45	9.40	15.20	15.20	16.30	—	23.15

Copenhagen—Aalborg/Aarhus—Gothenburg—Oslo

✕	ABA 1670/ 1652B D	BEA 687 Tue Thu S	DDL 1777 Mon Thu Sat	DDL 1773 Tue Wed Fri S	BEA 682 Mon Fri	DDL 1715 D	ABA 1670/ 1652A D
✕	6.25	—	14.05	14.05	15.15	19.50	20.50
✕	6.40	—	—	—	—	—	21.05
✕	7.00	—	—	—	—	—	21.30
✕	—	—	14.55	—	—	—	—
✕	—	—	15.25	—	—	—	—
✕	—	—	—	15.15	—	—	—
✕	—	—	—	15.45	—	—	—
✕	8.10	—	16.25	16.25	16.15	21.00	22.40
✕	—	13.35	16.45	16.45	—	21.20	—
✕	—	14.45	18.05	18.05	—	22.35	—

Bus departure () min. before the take-off of the aircraft.

Oslo: DNL, Tordenskjoldsgate (50, route 687 105)

Gothenburg: ABA, Trafikcentralen, Sluss-
platsen 2 (60, route 1652 40)

Aalborg: DDL, Jernbanegade 1 for passengers to Gothen-
burg and Oslo (50)

for passengers to Copenhagen (40)

Aarhus: DDL, Raadhuset, Parkallé for passengers to Go-
thenburg and Oslo (80*)

for passengers to Copenhagen (70*)

Malmö: ABA, Central Station (20)

Copenhagen: DDL, Dagmarhus (40, route 682 50, route 1715 60)

* Bus service not included in the fare.

Stockholm—Malmö—Copenhagen

km	✕	ABA 1624 Mon Tue Wed Thu Sat	DDL 1760 D	ABA 1623 Fri S	ABA 1612 Tue Thu	Saba- na 1009 Mon S
0	d Stockholm	6.55	—	7.00	7.10	—
516	a Malmö	9.10	—	—	—	—
—	d Malmö	↗	9.30	—	—	—
540	a Copenhagen	—	9.45	9.20	9.30	10.25

km	✕	ABA 1605 Wed Fri	SAS 1693 Sat	Swiss- air 1089 S	ABA 1627 ^{10/12}	ABA 136/ 1629/ 1645 Tue Wed Fri	ABA 136 Sat	KLM 905 D	CSA 1424 Mon Wed
0	d Stockh.	8.05	8.15	9.00	9.15	9.15	9.15	9.30	10.00
516	a Malmö	—	—	—	—	—	—	—	—
—	d Malmö	—	—	—	—	—	—	—	—
540	a Copenh.	10.25	10.15	11.10	11.15	11.15	11.35	11.40	12.15

km	✕	ABA 1600 D	BEA 702 Mon Thu	ABA 1654 D	ABA 1670 D	SAS 1690 Tue Wed Fri S	ABA 1615 Tue Thu D	ABA 1670 D
0	d Stockh.	10.20	10.50	13.15	—	16.00	20.00	—
516	a Malmö	—	—	15.30	—	—	22.15	—
—	d Malmö	—	—	↗	16.00	—	↗	23.00
540	a Copenh.	12.40	13.05	—	16.15	18.00	—	23.15

Copenhagen—Malmö—Stockholm

km	✕	ABA 1670 D	ABA 1615 D	DDL 1760 D	ABA 1654 D	CSA 1424 Tue S	SAS 1690 Mon Tue Thu Sat	ABA 1600 D
0	d Copenh.	6.25	—	10.10	—	12.00	12.15	12.30
24	a Malmö	6.40	—	10.25	—	—	—	—
—	d Malmö	↗	7.30	↗	10.45	—	—	—
540	a Stockh.	—	9.40	—	12.55	14.15	14.15	14.45

km	✕	Swiss- air 1089 Sat	Saba- na 1009 Sat S	ABA 135 S	BEA 702 Wed S	ABA 1624 Tue Thu Fri S	KLM 905 D	ABA 1629 Mon	ABA 1628 ^{11/12}	ABA 1623 Mon Sat
0	d Copenh.	13.20	13.30	14.45	15.15	—	16.25	16.50	17.50	18.25
24	a Malmö	—	—	—	—	—	—	—	—	—
—	d Malmö	—	—	—	—	—	—	—	—	—
540	a Stockh.	15.30	15.45	17.00	17.20	18.15	18.35	18.45	19.45	20.40

km	✕	ABA 1612 Tue Thu	ABA 1605 Wed Fri	ABA 135/ 1645 Tue Thu	SAS 1693 Fri
0	d Copenh.	18.50	20.25	21.05	22.05
24	a Malmö	—	—	—	—
—	d Malmö	—	—	—	—
540	a Stockh.	21.05	22.40	23.00	24.00

Bus departure () min. before the take-off of the aircraft.

Stockholm: ABA, Flygpaviljongen, Nybroplan
for passengers to Malmö (35)
» » » Copenhagen (60, route 1627, 1628,
1629, 1690, 1693 75, route 1624, 1654 35)
Malmö: ABA, Central Station (20)
Copenhagen: DDL, Dagmarhus (50, route 1670, 1760 40)

Malmö—Copenhagen

km	Daily	ABA 1670	DDL 1760	DDL 1760	DDL 1760	DDL 1760	ABA 1670	ABA 1670	ABA 1670
0	d Malmö	5.50	8.30	9.30	11.10	12.40	16.00	19.00	20.10
24	a Copenhagen	6.05	8.45	9.45	11.25	12.55	16.15	19.15	20.25

km	Daily	ABA 1670
0	d Malmö	23.00
24	a Copenhagen	23.15

Copenhagen—Malmö

km	Daily	ABA 1670	DDL 1760	DDL 1760	DDL 1760	DDL 1760	ABA 1670	ABA 1670	ABA 1670
0	d Copenhagen	6.25	8.00	9.00	10.10	12.10	18.30	19.40	20.50
24	a Malmö	6.40	8.15	9.15	10.25	12.25	18.45	19.55	21.05

km	Daily	ABA 1670
0	d Copenhagen	23.25
24	a Malmö	23.40

Bus departure () min. before the take-off of the aircraft.
Malmö: ABA, Central Station (20)
Copenhagen: DDL, Dagmarhus (40)

To our passengers

One of the chief demands on good service is that the aircraft departs according to schedule. In order that this be accomplished we ask for your co-operation.

Make sure that you arrive at the terminal in good time so that all the necessary formalities can be dealt with.

If you are travelling abroad you should arrive in sufficient time to have your passport and foreign currency checked and your luggage examined.

If you wish to be transported by ABA, you should arrive at the terminal dispatch station 15 minutes before the departure of the bus. Passengers going direct to the airport should be there

15 mins. before the departure of the aircraft — on Swedish internal routes
30 » » » » » » — on European routes
45 » » » » » » — to North and South America.

Those who arrive later cannot claim transport or repayment of the fare.

Route 903, 1600
Douglas DC-3

Amsterdam

Stockholm (Oslo, Gothenburg, Malmö) —
Copenhagen — Amsterdam

km	KLM 905 D	ABA 1600 D	✕	ABA 1600 D	KLM 905 D	km
0	9.30	10.20	↓ d Stockholm a	14.45	18.35	1202
538	11.40	12.40	↓ a Copenhagen d	12.30	16.25	—
—	7.05 ¹⁾	7.05 ³⁾	d Oslo a	18.05	22.35 ⁶⁾	—
—	9.40 ²⁾	9.40 ⁴⁾	a Copenhagen d	14.05	19.50 ⁵⁾	—
—	7.50	7.50	d Gothenburg a	16.25 ⁸⁾	21.00	—
—	9.45	9.45	a Copenhagen d	14.05 ⁷⁾	19.50	—
—	11.10	12.40	d Malmö a	12.25	18.45	—
—	11.25	12.55	a Copenhagen d	12.10	18.30	—
—	12.10	13.05	↓ d Copenhagen a	12.00	15.55	664
1202	14.45	15.55	↓ a Amsterdam d	9.15	13.15	0

Bus departure () min. before the take-off of the aircraft.

Stockholm: ABA, Flygpaviljongen, Nybroplan (60)
Oslo: DNL, Tordenskjoldsgate (50)
Gothenburg: ABA, Trafikcentralen, Slussplatsen 2 (40)
Malmö: ABA, Central Station (20)
Copenhagen: DDL, Dagmarhus (60)
Amsterdam: KLM, Leidsche Plein (70)

¹⁾ Tue, Sat, S 8.20. ²⁾ Tue, Sat, S 10.20. ³⁾ Tue, Sat, S 8.20; Fri 10.10.
⁴⁾ Tue, Sat, S 10.20; Fri 12.15. ⁵⁾ Mon, Fri, S 17.30. ⁶⁾ Mon, Fri, S 19.30.
⁷⁾ Mon, Fri 15.15. ⁸⁾ Mon, Fri 16.15.

(Oslo) — Gothenburg — Hamburg — Amsterdam

km	KLM 903 Tue Thu Sat	✕	KLM 903 Mon Wed Fri	km
—	—	d Oslo a	18.05	—
—	—	a Gothenburg d	16.45	—
0	8.00	↓ d Gothenburg a	16.05	940
—	*	a Hamburg d	**	—
—	*	d Hamburg a	**	—
940	11.20	↓ a Amsterdam d	12.55	0

Bus departure () min. before the take-off of the aircraft.

Oslo: DNL, Tordenskjoldsgate (50)
Gothenburg: ABA, Trafikcentralen, Slussplatsen 2 (60)
Hamburg: Air Terminal, HAPAG Building, 25 Ballindamm (60)
Amsterdam: KLM, Leidsche Plein (70)

Booking offices — see pages 27—28. Fares — see pages 29—35.

*Intermediate landing in Hamburg Saturdays.

**Intermediate landing in Hamburg Mondays.

ABA Night Freight and Mail Route 1660

Stockholm (Gothenburg, Malmö) — Copenhagen —
Amsterdam

From Stockholm Mon, Tue, Wed, Thu, Fri.
From Amsterdam Tue, Wed, Thu, Fri, Sat.

21.10	↓ d Stockholm a	3.40
23.30	↓ a Copenhagen d	6.25
21.10	d Gothenburg a	8.10
23.00	d Malmö a	6.40
23.15	a Copenhagen d	6.25
23.50	↓ d Copenhagen a	6.05
2.40	↓ a Amsterdam d	3.20

Route 1605
Douglas DC-3

Brussels

Stockholm (Oslo, Gothenburg, Malmö) —
Copenhagen — Hamburg — Brussels

km	✕	DDL 1752 Tue Thu	Sabena 1009 Mon S	ABA 1605 Wed Fri	
0	↓ d Stockholm	—	8.05	8.05	—
538	↓ a Copenhagen	—	10.25	10.25	—
—	d Oslo	7.05	7.05 ¹⁾	7.05	—
—	a Copenhagen	9.40	9.40 ²⁾	9.40	—
—	d Gothenburg	7.50	7.50	7.50	—
—	a Copenhagen	9.45	9.45	9.45	—
—	d Malmö	9.30	9.30	9.30	—
—	a Copenhagen	9.45	9.45	9.45	—
—	↓ d Copenhagen	10.15	10.55	10.55	—
818	↓ a Hamburg	11.40	12.20	12.20	—
—	d Hamburg	12.10	12.50	12.50	—
1308	↓ a Brussels	14.20	15.00	15.00	—

km	✕	Sabena 1009 Sat S	DDL 1752 Tue Thu	ABA 1605 Wed Fri	
0	↓ d Brussels	8.50	—	15.00	16.00
490	↓ a Hamburg	10.55	—	17.05	18.05
—	d Hamburg	11.25	—	17.45	18.35
770	↓ a Copenhagen	12.45	—	19.05	19.55
—	d Copenhagen	18.30	—	19.40	20.50
—	a Malmö	18.45	—	19.55	21.05
—	d Copenhagen	14.05	—	19.50	20.50
—	a Gothenburg	16.25	—	21.00	22.40
—	d Copenhagen	14.05	—	19.50	—
—	a Oslo	18.05	—	22.35	—
—	↓ d Copenhagen	13.30	—	—	20.25
1308	↓ a Stockholm	15.45	—	—	22.40

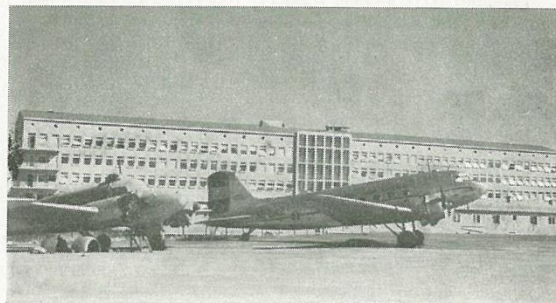
Bus departure () min. before the take-off of the aircraft.

Stockholm: ABA, Flygpaviljongen, Nybroplan (60)
Oslo: DNL, Tordenskjoldsgate (50)
Gothenburg: ABA, Trafikcentralen, Slussplatsen 2 (40)
Malmö: ABA, Central Station (20)
Copenhagen: DDL, Dagmarhus (60)
Hamburg: Air Terminal, HAPAG Building, 25 Ballindamm (60)
Brussels: SABENA, 145, Rue Royale (60, route 1009 45)

Booking offices — see pages 27—28.

Fares — see pages 28—35.

¹⁾ S 8.20. ²⁾ S 10.20.



ABA's new headoffice, Bromma airport, Stockholm.

Frankfurt—Geneva

Stockholm (Oslo, Gothenburg, Malmö)—Copenhagen—Hamburg—Frankfurt—Geneva

Route 1623 Douglas DC-3. Route 1627, 1628, 1629, 1693 Douglas DC-4.

km	✕	ABA 1623* Fri S	DDL 1753 Sat	SAS 1693 Sat	ABA 1627 12/13 Fri	ABA 1629 Fri
0	d Stockholm	7.00	—	8.15	9.15	9.15
538	a Copenhagen	9.20	—	10.15	11.15	11.15
—	d Oslo	—	7.05	8.20	7.05	7.05
—	a Copenhagen	—	9.40	10.20	9.40	9.40
—	d Gothenburg	—	7.50	7.50	7.50	7.50
—	a Copenhagen	—	9.45	9.45	9.45	9.45
—	d Malmö	8.30	9.30	9.30	11.10	11.10
—	a Copenhagen	8.45	9.45	9.45	11.25	11.25
—	d Copenhagen	9.50	10.15	11.00	11.55	12.20
818	a Hamburg	11.15	—	—	—	—
—	d Hamburg	11.40	—	—	—	—
1226	a Frankfurt	13.30	13.05	—	14.25	—
—	d Frankfurt	13.55	13.25	—	15.05	—
1690	a Geneva	16.00	15.30	15.10	16.55	16.15

km	✕	ABA 1623* MonSat	ABA 1629 Mon	ABA 1628 12/13 S	DDL 1753 S	SAS 1693 Fri
0	d Geneva	11.50	12.15	12.15	13.45	17.45
464	a Frankfurt	13.50	—	14.00	15.40	—
—	d Frankfurt	14.15	—	14.45	16.20	—
872	a Hamburg	16.05	—	—	—	—
—	d Hamburg	16.35	—	—	—	—
1152	a Copenhagen	17.55	16.05	17.10	19.05	21.35
—	d Copenhagen	18.30	18.30	18.30	19.40	23.25
—	a Malmö	18.45	18.45	18.45	19.55	23.40
—	d Copenhagen	19.50	19.50	19.50	19.50	—
—	a Gothenburg	21.00	21.00	21.00	21.00	—
—	d Copenhagen	19.50	17.30	17.30	19.50	—
—	a Oslo	22.35	19.30	19.30	22.35	—
—	d Copenhagen	18.25	16.50	17.50	—	22.05
1690	a Stockholm	20.40	18.45	19.45	—	24.00

Bus departure () min. before the take-off of the aircraft.

Stockholm: ABA, Flygpaviljongen, Nybroplan (75, route 1623) (60)
 Oslo: DNL, Tordenskjoldsgate (50)
 Gothenburg: ABA, Trafikcentralen, Slussplatsen 2 (40)
 Malmö: ABA, Central Station (20)
 Copenhagen: DDL, Dagmarhus (60, route 1693) (90)
 Hamburg: Air Terminal, HAPAG Building, 25 Ballindamm (60)
 Frankfurt: AOA, Carlton Hotel (90)
 Geneva: Swissair, 16 Place Cornavin . . (75, route 1623, 1753) (45)

Booking offices — see pages 27—28.

Fares — see pages 28—35.

* Service 1623 may be altered without notice.

Winter Olympic Games in St. Moritz

make Switzerland — the home of winter sports — even more attractive this year, and they will be held between 30th January and 8th February.

ABA helps you to fulfil those longed-for moments by transporting you speedily and comfortably to witness the skiing and other breath-taking winter sports events.

Str. 1624
Douglas DC-3

Frankfurt—Zürich

Stockholm (Oslo, Gothenburg, Copenhagen)—Malmö—Hamburg—Frankfurt—Zürich

km	ABA 1624 Mon Tue Wed Thu Sat	✕	ABA 1624 Tue Wed Thu Fri S	km	
0	6.55	d Stockholm	a	18.15	1521
516	9.10	a Malmö	d	16.05	—
—	—	d Oslo	a	22.35 ^{*)}	—
—	—	a Malmö	d	19.00 ^{*)}	—
—	7.50	d Gothenburg	a	21.00*	—
—	9.05	a Malmö	d	19.00*	—
—	9.00	d Copenhagen	a	16.15	—
—	9.15	a Malmö	d	16.00	—
—	9.40	d Malmö	a	15.40	1005
810	11.05	a Hamburg	d	14.20	—
—	11.35	d Hamburg	a	13.45	711
1218	13.25	a Frankfurt	d	11.55	—
—	13.55	d Frankfurt	a	11.25	303
1521	15.25	a Zürich	d	10.00	0

Bus departure () min. before the take-off of the aircraft.

Stockholm: ABA, Flygpaviljongen, Nybroplan (60)
 Oslo: DNL, Tordenskjoldsgate (50)
 Gothenburg: ABA, Trafikcentralen, Slussplatsen 2 (40)
 Malmö: ABA, Central Station (20)
 Copenhagen: DDL, Dagmarhus (40)
 Hamburg: Air Terminal, HAPAG Building, 25 Ballindamm (60)
 Frankfurt: AOA, Carlton Hotel (90)
 Zürich: Swissair, Hauptbahnhof (60)

Stockholm (Oslo, Gothenburg, Malmö)—Copenhagen—Frankfurt—Zürich

km	DDL 1757 D	DNL 1712/ 1725 Tue Sat	Swiss- air 1089 S	✕	Swiss- air 1089 Sat	DNL 1712/ 1725 Fri S	DDL 1757 D	km
0	—	—	9.00	d Stockh. a	15.30	—	—	1529
538	—	—	11.10	a Copenh. d	13.20	—	—	—
—	—	8.20	8.20	d Oslo . . . a	18.05	19.30	22.35	—
—	—	10.20	10.20	a Copenh. d	14.05	17.30	19.50	—
—	—	7.50	7.50	d Gothenb. a	16.25	21.00	21.00	—
—	—	9.45	9.45	a Copenh. d	14.05	19.50	19.50	—
—	8.30	9.30	11.10	d Malmö a	18.45	18.45	19.55	—
—	8.45	9.45	11.25	a Copenh d	18.30	18.30	19.40	—
—	9.10	11.10	11.40	d Copenh. a	12.50	17.00	19.20	991
1226	12.00	14.10	—	a Frankf. d	14.00	14.00	16.35	—
—	12.25	15.00	—	d Frankf. a	13.20	16.05	16.05	303
1529	13.45	16.20	15.40	a Zürich d	8.50	12.00	14.45	0

Bus departure () min. before the take-off of the aircraft.

Stockholm: ABA, Flygpaviljongen, Nybroplan (60)
 Oslo: DNL, Tordenskjoldsgate (50)
 Gothenburg: ABA, Trafikcentralen, Slussplatsen 2 (40)
 Malmö: ABA, Central Station (20)
 Copenhagen: DDL, Dagmarhus (60)
 Frankfurt: AOA, Carlton Hotel (90)
 Zürich: Swissair, Hauptbahnhof (60)

Booking offices — see pages 27—28.

Fares — see pages 28—35.

* Via Copenhagen. *) Fri, S 16.00. *) Fri, S 19.30.

Hamburg

Stockholm (Oslo, Gothenburg, Malmö) —
Copenhagen — Hamburg

km	✕	ABA 1624 Mon Tue Wed Thu Sat	ABA 1623* Fri S	DDL 1752 Tue Thu	Sabena 1009 Mon S	ABA 1605 Wed Fri
0	d Stockholm ..	6.55	7.00	—	8.05	8.05
538	a Copenhagen ..	—	9.20	—	10.25	10.25
—	d Oslo	—	—	7.05	7.05 ³⁾	7.05
—	a Copenhagen ..	—	—	9.40	9.40 ⁴⁾	9.40
—	d Gothenburg ..	7.50 ¹⁾	—	7.50	7.50	7.50
—	a Copenhagen ..	—	—	9.45	9.45	9.45
—	d Malmö	9.40 ²⁾	8.30	9.30	9.30	9.30
—	a Copenhagen ..	—	8.45	9.45	9.45	9.45
—	d Copenhagen ..	—	9.50	10.15	10.55	10.55
818	a Hamburg ...	11.05	11.15	11.40	12.20	12.20
km	✕	Sabena 1009 Sat S	ABA 1624 Tue Wed Thu Fri S	ABA 1623* Mon Sat	DDL 1752 Tue Thu	ABA 1605 Wed Fri
0	d Hamburg ...	11.25	14.20	16.35	17.45	18.35
280	a Copenhagen ..	12.45	—	17.55	19.05	19.55
—	d Copenhagen ..	18.30	—	18.30	19.40	20.50
—	a Malmö	18.45	15.40 ²⁾	18.45	19.55	21.05
—	d Copenhagen ..	14.05	—	19.50	19.50	20.50
—	a Gothenburg ..	16.25	21.00 ⁵⁾	21.00	21.00	22.40
—	d Copenhagen ..	14.05	—	19.50	19.50	—
—	a Oslo	18.05	22.35 ⁶⁾	22.35	22.35	—
—	d Copenhagen ..	13.30	—	18.25	—	20.25
818	a Stockholm ..	15.45	18.15	20.40	—	22.40

Bus departure () min. before the take-off of the aircraft.

- Stockholm: ABA, Flygpaviljongen, Nybroplan (60)
- Oslo: DNL, Tordenskjoldsgate (50)
- Gothenburg: ABA, Trafikcentralen, Slussplatsen 2 (40)
- Malmö: ABA, Central Station (20)
- Copenhagen: DDL, Dagmarhus (60)
- Hamburg: Air Terminal, HAPAG Building, 25 Ballindamm (60)

¹⁾ Via Malmö. ²⁾ Direct Malmö—Hamburg and v.v. ³⁾ S 8.20. ⁴⁾ S 10.20.

⁵⁾ Via Malmö—Copenhagen. ⁶⁾ Via Malmö—Copenhagen; Fri, S 19.30.

* Service 1623 may be altered without notice.

Now You Can Fly to Hamburg

Until recently only intermediary landings were made in Hamburg for technical purposes. However, ABA has now been given permission to operate ordinary, commercial traffic to this station. Thus passengers, mail and freight are transported just as comfortably as to every other station covered by ABA's airline network.

Lisbon

Stockholm (Oslo, Gothenburg, Malmö) — Copenhagen —
(London) — Paris — Lisbon

km	ABA 1645 Wed	✕	ABA 1645 Thu	km	
0	9.15	d Stockholm	a	23.00	3038
538	11.15	a Copenhagen	d	21.05	—
—	7.05	d Oslo	a	—	—
—	9.40	a Copenhagen	d	—	—
—	7.50	d Gothenburg	a	22.40	—
—	9.45	a Copenhagen	d	20.50	—
—	11.10	d Malmö	a	21.05	—
—	11.25	a Copenhagen	d	20.50	—
—	11.55	d Copenhagen	a	20.20	2500
1576	15.25	a Paris	d	17.00	—
—	9.55	d London } AF	a	19.05	—
—	12.30	a Paris }	d	18.25	—
—	16.40	d Paris	a	15.20	1462
3038	20.40	a Lisbon	d	9.30	0

Bus departure () min. before the take-off of the aircraft.

- Stockholm: ABA, Flygpaviljongen, Nybroplan (60)
- Oslo: DNL, Tordenskjoldsgate (50)
- Gothenburg: ABA, Trafikcentralen, Slussplatsen 2 (40)
- Malmö: ABA, Central Station (20)
- Copenhagen: DDL, Dagmarhus (60)
- London: Airways Terminal (70)
- Paris: AF, Gare des Invalides (75)
- Lisbon: Aero Portuguesa Lda, Avenida da Liberdade 120 (60)

Booking offices — see pages 27—28. Fares — see pages 28—35.

Route Stockholm—Lisbon via Geneva — see page 26.



Fishingharbour in Lisbon.

Glasgow—London

Scandinavia—Glasgow and London

Route 1630, Douglas DC-3. Route 1690, Douglas DC-4.

✕	DDL	ABA	BEA	BEA	BEA	BEA	SAS	SAS
	1750	1630	702	682	682	687	1690	1690
	D	Mon	Mon	Tue	Mon	Tue	Mon	Tue
		Fri	Thu	Sat	Fri	Thu	Thu	Wed
		Sat	Sat	Sat	Sat	Sat	Sat	Fri
↙d Stockholm	—	8.45	10.50	—	—	—	16.00	16.00
a Oslo	—	—	—	—	—	—	17.45	—
d Oslo	—	—	—	—	—	15.25	18.15	—
a Gothenburg	—	10.40	—	—	—	16.40	—	—
d Gothenburg	—	11.05	—	—	—	—	—	—
a Copenhagen	—	—	13.05	16.30	17.14	—	—	18.00
d Copenhagen	10.30	—	14.04	17.14	—	—	—	18.30
a Glasgow	—	—	—	—	19.45	—	21.00	21.15
↘a London	13.04	14.34	16.44	19.54	—	20.14	—	—

✕	SAS	SAS	BEA	BEA	BEA	BEA	DDL	ABA
	1690	1690	687	682	680/682	702	1750	1630
	Mon	Wed	Tue	Tue	Mon	Wed	D	Mon
	Tue	Fri	Thu	Sat	Fri	Sat		Tue
	Thu	Sat	Sat	Sat	Sat	Sat		Fri
	Sat	Sat	Sat	Sat	Sat	Sat		Sat
↙d London	—	—	8.20	—	10.00	10.00	13.50	15.30
d Glasgow	7.10	7.10	—	10.15	—	—	—	—
a Copenhagen	11.45	—	—	14.25	14.25	18.00	—	—
d Copenhagen	12.15	—	—	15.15	15.15	—	—	—
a Gothenburg	—	—	13.05	14.45	16.15	—	—	20.30
d Gothenburg	—	—	13.35	—	—	—	—	21.00
a Oslo	—	11.45	14.45	—	—	—	—	—
d Oslo	—	12.15	—	—	—	—	—	—
↘a Stockholm	14.15	14.00	—	—	—	17.20	—	22.45

Bus departure () min. before the take-off of the aircraft.

Stockholm: ABA, Flygpaviljongen, Nybroplan (60,
route 1690 75)
Oslo: DNL, Tordenskjoldsgate (105, route 1690 135)
Gothenburg: ABA, Trafikcentralen, Slussplatsen 2 (60)
Copenhagen: DDL, Dagmarhus (60, route 1690 75)
Glasgow: BEA, St. Enoch Station (60)***
London: Airways Terminal (70)

Booking offices — see pages 27—28. Fares — see pages 28—35.

***Only for route 682. Information as to connections to the airport for route 1690 can be obtained at the SAS office at Prestwick airport, tel. 7272.

Time flies, and so does air freight!

Air freight is speedy, practical and economical. ABA's freight experts are entirely at your disposal, and will be glad to give you detailed information about this service.

You can get in touch with them either by ringing our local office or by writing our central freight office:

AB AEROTRANSPORT
Kungsholmstorg 1
Stockholm

Perhaps ABA's air freight service is the solution to your transport problems.

Helsingfors—Moscow

Stockholm—Mariehamn—Åbo—Helsingfors—Moscow

Route 1631, 1640 Douglas DC-3.

km	✕	ABA	AERO	AERO	ABA
		1640	1800	1801/1832	1631
		W	W	W	W
0	↙d Stockholm	7.15**	10.10	11.45*	16.15
—	a Mariehamn	—	—	13.35	—
—	d Mariehamn	—	—	13.55	—
—	a Åbo	—	—	14.40	—
—	d Åbo	—	—	15.00	—
453	↘a Helsingfors	10.15	13.10	15.50	19.15

km	✕	Aeroflot			
		Tue	Thu		
		Sat			
0	↙d Helsingfors	11.05	—	—	—
934	↘a Moscow	16.20	—	—	—

km	✕	AERO	AERO	ABA	ABA
		1800	1832/1801	1640	1631
		W	W	W	W
0	↙d Helsingfors	8.00	8.40*	13.00**	20.00
—	a Åbo	—	9.30	—	—
—	d Åbo	—	9.50	—	—
—	a Mariehamn	—	10.35	—	—
—	d Mariehamn	—	10.55	—	—
453	↘a Stockholm	9.00	10.45	14.00	21.00

Bus departure () min. before the take-off of the aircraft.

Stockholm: ABA, Flygpaviljongen, Nybroplan (60)
Mariehamn: Aero, Firma Erik Nylund, Ekonomigatan 2 (60)
Åbo: Aero Travel Bureau, Satutorget (40)
Helsingfors: For passengers to Åbo, Mariehamn and Stockholm: Aero Travel Bureau, N. Esplanadgatan 2
(60, route 1801/1832 40)

For local passengers to Moscow:

Information about bus services can be obtained from Intourist, Unionsg. 24, tel. 37123, 35191.

Moscow: Times concerning connections to the airport are obtainable from Intourist, Uliza Gorkogo 1 or from your hotel.

Booking offices — see pages 27—28. Fares — see pages 28—35.

* No bookings can be accepted on these services between Stockholm and Helsingfors and v. v.

** On Tuesdays, Thursdays and Saturdays from Stockholm, and on Mondays, Wednesdays and Fridays from Helsingfors this route is primarily intended for passengers flying direct Stockholm—Moscow and vice versa. Seats, however, may be reserved to and from Helsingfors should space be available.

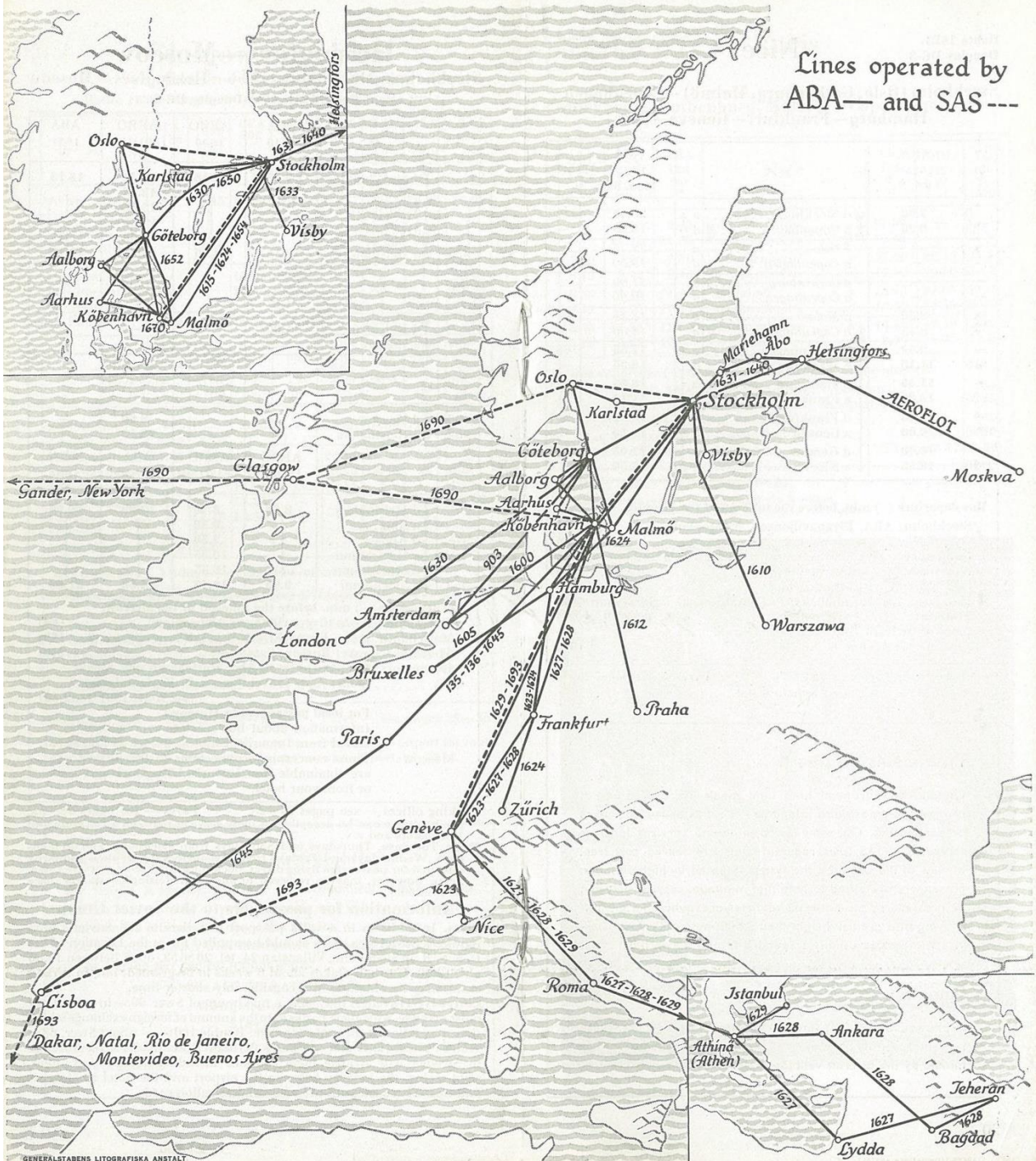
Information for passengers to the Soviet Union

Visas. In addition to a valid passport travellers to the Soviet Union require a Soviet visa. This should be applied for at the Legation of the U. S. S. R. in Stockholm, Villagatan 24, tel. 20 8652, open between 11.00 and 13.00. It usually takes about 6 weeks to be granted, but, in certain cases, may be obtained in a considerably shorter time.

Currency. Travellers may take a maximum of Swc. 99:— in cash. They must arrange with their banks as to the amount of foreign exchange which they may take out. Rate of exchange: Rouble 100:— = about Swc. 68:—.

Hotels, restaurants and rationing. Nyman & Schultz' Travel Bureaux in Sweden will arrange hotel coupons including hotel rooms, food, sight-seeing, the journey between the airport and the hotel in Moscow and tips. These coupons are also valid as ration cards.

Lines operated by
ABA— and SAS---



Route 1623
Douglas DC-3

Nice

Stockholm (Oslo, Gothenburg, Malmö) — Copenhagen —
Hamburg — Frankfurt — Geneva — Nice

km	ABA 1623* Fri, S	✕	ABA 1623* Mon, Sat	km
0	7.00	↘ d Stockholm a ↑	20.40	2220
538	9.20	↘ a Copenhagen d ↗	18.25	—
—	—	d Oslo a	22.35	—
—	—	a Copenhagen d	19.50	—
—	—	d Gothenburg a	21.00	—
—	—	a Copenhagen d	19.50	—
—	8.30	d Malmö a	18.45	—
—	8.45	a Copenhagen d	18.30	—
—	9.50	↘ d Copenhagen a ↑	17.55	1682
818	11.15	a Hamburg d	16.35	—
—	11.40	d Hamburg a	16.05	1402
1226	13.30	a Frankfurt d	14.15	—
—	13.55	d Frankfurt a	13.50	994
1690	16.00	a Geneva d	11.50	—
—	16.40	d Geneva a	11.05	530
2220	18.55	↘ a Nice d ↗	8.50	0

Bus departure () min. before the take-off of the aircraft.

Stockholm: ABA, Flygpaviljongen, Nybroplan	(60)
Oslo: DNL, Tordenskjoldsgate	(50)
Gothenburg: ABA, Trafikcentralen, Slussplatsen 2	(40)
Malmö: ABA, Central Station	(20)
Copenhagen: DDL, Dagmarhus	(60)
Hamburg: Air Terminal, HAPAG Building, 25 Ballindamm	(60)
Frankfurt: AOA, Carlton Hotel	(90)
Geneva: Swissair, 16, Place Cornavin	(45)
Nice: AF, 7, Avenue de Suède	(55)

Booking offices — see pages 27—28. Fares — see pages 28—35.

*Service 1623 may be altered without notice.

Free meals on board

On all ABA European lines light meals are served free of charge and on Swedish inland routes coffee or tea and cakes or sandwiches. On some Swedish inland services lunch is served. On SAS lines regular meals are served cost free. In view of the strain on the system imposed by high altitudes, passengers are asked to note that minimum service only can be provided by air hostesses and stewards when the aircraft is flying at a greater height than 3,000 metres. Catering service is therefore usually suspended at and above this height.

Smoking

is allowed on all ABA and SAS routes. This will not cause non-smokers any discomfort as the air is changed once every minute by the aircraft ventilation system.

Route 135/136, 1645
Douglas DC-4

Paris

Stockholm (Gothenburg, Malmö) — Copenhagen — Paris

DDL 1751 W	ABA 136/ 1645 Tue, Wed	ABA 136 Sat **	✕	ABA 135 S **	DDL 1751 W	ABA 135/ 1645 Tue, Thu
—	9.15	9.15	↘ d Stockholm a ↑	17.00	—	23.00
—	11.15	11.35	↘ a Copenhagen d ↗	14.45	—	21.05
7.50	7.50	7.50	d Gothenburg a	21.00	22.40	22.40
9.45	9.45	9.45	a Copenhagen d	19.50	20.50	20.50
9.30	11.10	11.10	d Malmö a	18.45	21.05	21.05
9.45	11.25	11.25	a Copenhagen d	18.30	20.50	20.50
10.45	11.55*	12.05*	↘ d Copenhagen a ↑	14.15*	19.40	20.20*
15.10	15.25	17.30	↘ a Paris d ↗	9.00	15.55	17.00

Bus departure () min. before the take-off of the aircraft.

Stockholm: ABA, Flygpaviljongen, Nybroplan	(60)
Gothenburg: ABA, Trafikcentralen, Slussplatsen 2	(40)
Malmö: ABA, Central Station	(20)
Copenhagen: DDL, Dagmarhus	(60)
Paris: AF, Gare des Invalides	(75, route 1751 90)

Booking offices — see pages 27—28. Fares — see pages 28—35.

* Only for travellers to, from and via Sweden.

** Douglas DC-3; intermediate landing in Amsterdam.



»Chat Noir» in Paris.

Prague

Stockholm (Oslo, Gothenburg, Malmö) —
Copenhagen — Prague

km	✕	ABA 1612 Tue Thu	DDL 1754 Mon Wed Fri	DNL 1717 S	CSA 1424 Mon Wed	CSA 1430 Fri
0	d Stockholm	7.10	—	—	10.00	—
538	a Copenhagen	9.30	—	—	12.15	—
—	d Oslo	7.05	7.05	8.20	7.05	10.10
—	a Copenhagen	9.40	9.40	10.20	9.40	12.15
—	d Gothenburg	7.50	7.50	7.50	7.50	7.50
—	a Copenhagen	9.45	9.45	9.45	9.45	9.45
—	d Malmö	9.30	9.30	9.30	11.10	11.10
—	a Copenhagen	9.45	9.45	9.45	11.25	11.25
—	d Copenhagen	10.05	10.15	11.10	12.45	12.45
1345	a Prague	13.40	13.30	15.40	15.45	15.45
km	✕	CSA 1424 Tue S	CSA 1430 Thu	DNL 1717 Mon	ABA 1612 Tue Thu	DDL 1754 Mon Wed Fri
0	d Prague	8.30	8.30	12.30	15.00	15.40
807	a Copenhagen	11.30	11.30	17.00	18.20	19.05
—	d Copenhagen	12.10	12.10	18.30	18.30	19.40
—	a Malmö	12.25	12.25	18.45	18.45	19.55
—	d Copenhagen	14.05	14.05	19.50	19.50	19.50
—	a Gothenburg	16.25	16.25	21.00	21.00	21.00
—	d Copenhagen	14.05	12.00	17.30	19.50	19.50
—	a Oslo	18.05	14.05	19.30	22.35	22.35
—	d Copenhagen	12.00	—	—	18.50	—
1345	a Stockholm	14.15	—	—	21.05	—

Bus departure () min. before the take-off of the aircraft.
 Stockholm: ABA, Flygpaviljongen, Nybroplan (60)
 Oslo: DNL, Tordenskjoldsgate (50)
 Gothenburg: ABA, Trafikcentralen, Slussplatsen 2 (40)
 Malmö: ABA, Central Station (20)
 Copenhagen: DDL, Dagmarhus (60)
 Prague: CSA, Náměstí Republiky (90)

Booking offices — see pages 27—28. Fares — see pages 28—35.

DC-6's are on the way

which means

- shortened travel
- greater comfort
- increased safety

At the moment it takes 6 hours from Stockholm to Prague. When ABA starts operating this line with DC-6's — which we estimate will be some time in April — the same journey will only last 3½ hours.

Another example is the route to London, normally carried out in 7 hours, but with DC-6's it only takes 4 hours, 20 minutes.

Rome—Athens—Istanbul—Ankara —Baghdad—Lydda—Teheran

Stockholm (Oslo, Gothenburg, Malmö) — Copenhagen —
Frankfurt — (Paris) — Geneva — Rome — Athens —
Istanbul — Ankara — Baghdad — Lydda — Teheran

ABA 1629 Fri	ABA 1627 17/12	✕	ABA 1629 Mon	ABA 1628 12/12
9.15	9.15	d Stockholm a	18.45	19.45
11.15	11.15	a Copenhagen d	16.50	17.50
7.05	7.05	d Oslo a	19.30	19.30
9.40	9.40	a Copenhagen d	17.30	17.30
7.50	7.50	d Gothenburg a	21.00	21.00
9.45	9.45	a Copenhagen d	19.50	19.50
11.10	11.10	d Malmö a	18.45	18.45
11.25	11.25	a Copenhagen d	18.30	18.30
12.20	11.55	d Copenhagen a	16.05	17.10
12.20	14.25	a Frankfurt d	12.15	14.45
16.15	15.05	d Frankfurt a	12.15	14.00
16.15	16.55	a Geneva d	12.15	12.15
14.05	14.05	d Paris a	16.30	16.30
15.50	15.50	a Geneva d	14.40	14.40
Sat 7.00	^{16/12} 7.00	d Geneva a	11.20	11.20
10.20	10.20	a Rome d	8.00	8.00
11.35	11.35	d Rome a	15.45	15.20
16.20	16.20	a Athens d	13.10	12.45
S 7.00	17.20	d Athens a	12.10	11.45
9.05		a Istanbul d	10.05	
—		a Ankara d	—	9.00
—		d Ankara a	—	15.40
—		a Baghdad d	—	
—		d Baghdad a	—	
—	21.25	a Lydda d	—	12.35
—	^{17/12} 9.00	d Lydda a	—	11.35
—	15.35	a Teheran d	—	8.00

Bus departure () min. before the take-off of the aircraft.
 Stockholm: ABA, Flygpaviljongen, Nybroplan (75)
 Oslo: DNL, Tordenskjoldsgate (50)
 Gothenburg: ABA, Trafikcentralen, Slussplatsen 2 (40)
 Malmö: ABA, Central Station (20)
 Copenhagen: DDL, Dagmarhus (60)
 Frankfurt: AOA, Carlton Hotel (90)
 Paris: AF, Gare des Invalides (70)
 Geneva: Swissair, 16 Place Cornavin (75)
 Rome: Avio Linee Italiane, Via Amendola 119 (90)
 Athens: Hermes Tourisme-Voyages, 4, Churchill Street (90)
 Istanbul: Antalya Untas, Sirkeci, Gar Civari 170 (90)
 Ankara: Antalya Untas, Posta Cadd. 19 (90)
 Tel Aviv (Lydda): Hotel Armon, 90 a, Hayarkon Str. (105)
 Jerusalem (Lydda): Larsson & Sons Travel Department, 16,
 King George Ave (120)
 Teheran: Levantour, Maidan Ferdowey (90)

Booking offices — see pages 27—28. Fares — see pages 28—35.

(Continued)

Route 1610
Douglas DC-3

Warsaw

Stockholm—Warsaw

km	ABA 1610 Sat	Lot 1552 Wed	✕	Lot 1552 Tue	ABA 1610 Sat	km
0	7.20	8.20	d Stockholm a	12.20	17.05	870
205	8.20*		a Visby d		16.05*	—
—	8.50*		d Visby a		15.35*	665
870	11.40	12.20	a Warsaw d	8.20	12.50	0

Bus departure () min. before the take-off of the aircraft.
Stockholm: ABA, Flygpaviljongen, Nybroplan (60)
Warsaw: LOT, Hoza 39 (75)

Booking offices — see pages 27—28. Fares — see pages 28—35.
*Technical landing only.

Information for passengers to Poland

Visas. In addition to a valid passport travellers to Poland require a Polish visa. This is applied for at the Polish Legation, Karlavägen 71, Stockholm, tel. 61 71 71, the formalities taking between 3 and 4 weeks.
Currency. Travellers may take a maximum of Swcr. 99:— in cash. They must arrange with their banks as to the amount of foreign exchange which they may take out. Rate of exchange: 1 Swedish crown = Zloty 28:27.
Hotel Accommodation. Room reservations in Warsaw must be made through the recognised organisation — »Zarząd Hoteli Miejskich», the address of which is Hotel Bristol, Krakowskie Przedmieście 42, Warsaw.
Rationing. Foreigners are not subject to the rationing system.
N. B. On arrival in Warsaw a passenger possessing a return ticket must without exception **make certain** at LOT, Hoza 39, tel. 890 60, that a seat has been reserved for the return journey even if this has been confirmed before departure.
The ABA office in Warsaw is at the Hotel Polonia, tel. 89 760, 89 761.

Route 1627, 1628, 1629 Stockholm—Teheran — continued.

Information for passengers.

Visas. In addition to a valid passport travellers to and via countries operated by this route require a transit or entry visa which may be obtained through the legation or consulate of respective country.
Italy: entry and transit visa.
Greece: entry and transit visa.
Turkey: entry visa and by overnight stop transit visa.
Iraq: entry and transit visa.
Palestine: entry visa and by overnight stop transit visa.
Iran: entry and transit visa.
Currency. Travellers may take a maximum of Swcr. 99:— in cash. They must arrange with their banks as to the amount of foreign exchange which they may take out.
Overnight stops.
Hotel expenses for overnight stops in Geneva, Rome, Athens, Ankara, Baghdad and Lydda are included in the fare.
Because of the overnight stops it is desirable for the passengers to pack the registered part of their baggage in two handbags only one of which will be accessible during the overnight stops and therefore to be packed accordingly. This bag should be marked »Wanted overnight» when the baggage is registered.
N. B. On arrival at the place from which the return journey will take place a passenger possessing a return ticket should get in touch with ABA booking-office to make certain that a seat has been reserved for the return journey even if this has been confirmed before departure.

Scandinavian Airlines System

Route 1690
Douglas DC-4

New York

Stockholm ^{Oslo} — Glasgow—Gander—New York
Copenhagen

Mon Thu Sat	S Tue Wed Fri	✕ SAS	Mon Tue Thu Sat	Wed Fri S
16.00	16.00	d Stockholm a	14.15	14.00
17.45		a Oslo d		12.15
18.15		d Oslo a		11.45
	18.00	a Copenhagen d	12.15	
	18.30	d Copenhagen a	11.45	
21.00	21.15	a Glasgow d	7.10	7.10
22.15	22.15	d Glasgow a	6.25	6.25
Tue Fri S	Mon Wed Thu Sat		S Mon Wed Fri	Tue Thu Sat
8.00	8.00	a Gander d	17.15	17.15
8.45	8.45	d Gander a	16.30	16.30
13.40	13.40	a New York d	9.45	9.45
Tue Fri S	Mon Wed Thu Sat		S Mon Wed Fri	Tue Thu Sat

Bus departure () min. before the take-off of the aircraft.
Stockholm: ABA, Flygpaviljongen, Nybroplan (75)
Oslo: DNL, Tordenskjoldsgate (135)
Copenhagen: DDL, Dagmarhus (75)
New York: SAS, Air Terminal, 47 East 46th Street (105)

Booking offices — see pages 27—28. Fares — see pages 28—35.

Information for passengers to USA.

Visas. Information can be obtained at booking offices, agents or the passenger department of SAS, Östervägen 2—4, Råsunda, Stockholm, tel. 272790.
Departure formalities. On the day of departure passengers from Stockholm should call at Flygpaviljongen, Nybroplan, between 9.00—16.00, from Copenhagen at DDL, Dagmarhus, Raadhuspladsen between 9.00—11.00 and from Oslo at DNL, Oversjøisk Avdeling, Fr. Nansens Plass 8, entrance Tordenskjoldsgate between 9.00—16.00 for luggage registration, control of tickets, passports and visas and for completing information sheets, etc.
N. B. Passengers who have booked but fail to arrive at the airport will be charged 25 % of the fare. (Not more than 50 dollars).
Travel funds etc. for Non-US citizens when entering the U. S.:
1. All passengers should have enough money to pay for immediate expenses i. e. customs duty, Head Tax, transportation from the airport to the place of destination, etc.
2. Temporary visitors should have enough funds to maintain themselves while in the U. S., or proof of funds at their disposal while in the U. S., a return ticket or proof they will obtain a return ticket.
3. Permanent residents should have proof of funds or family funds to support them while in the U. S.
4. Passengers entering the U. S. on a transit-visa should be in possession of a ticket or visa to the country of destination.
5. Prospective husbands must deposit a 500-dollar bond with the U. S. Immigration Authorities before their future wives arrive in the U. S. Persons seeking entrance to the U. S. for medical treatment must have a 500 dollar bond deposited before they leave the port of origin.
6. A passenger under 16 years of age travelling alone must be met at the airport by parents, relative or guardian or an authorized travel agent.
N. B. Passengers possessing a return ticket should get in touch with a SAS booking-office in the U. S. as soon as possible and at the latest 48 hours before the return journey from New York.

South America

Stockholm—Copenhagen—Geneva—Lisbon—
Dakar—Natal—Rio de Janeiro—Montevideo—Buenos Aires

1693 Sat	SAS ✕	1693 Fri
8.15	d Stockholm a	24.00
10.15	a Copenhagen d	22.05
11.00	d Copenhagen a	21.35
15.10	a Geneva d	17.45
16.10	d Geneva a	17.00
20.15	a Lisbon d	11.00
S		Thu
9.00	d Lisbon a	23.15
17.45	a Dakar d	14.45
18.45	d Dakar a	13.45
Mon		
0.45	a Natal d	1.15
1.45	d Natal a	0.15
		Wed
8.45	a Rio de Janeiro d	17.15
10.00	d Rio de Janeiro a	16.00
15.50	a Montevideo d	10.00
16.45	d Montevideo a	9.05
17.50	a Buenos Aires d	8.00
Mon		Wed

Bus departure () min. before the take-off of the aircraft.

Stockholm: ABA, Flygpaviljongen, Nybroplan	(75)
Copenhagen: DDL, Dagmarhus	(90)
Geneva: Swissair, 16, Place Cornavin	(75)
Lisbon: Aero Portuguesa Lda, Avenida da Liberdade 120	(60)
Dakar: AF, 1, Rue Parent	(90)
Natal: Servicos Aereos, Cruzeiro do Sul, Rua Frei Miguelino 119	(90)
Rio de Janeiro: SAS, Santos Dumont Airport	(195)
Montevideo: SAS, 18 de Julio 1121	(175)
Buenos Aires: SAS, Avda. Pte. R. S. Pena 728	(150)

Booking offices — see pages 27—28. Fares — see pages 28—35.

Information for travellers to South America.

Visas and vaccination. Information can be obtained at booking offices, agents or the passenger department of SAS, Östervägen 2—4, Råsunda, Stockholm, tel. 272790.

Departure formalities. The day before departure from the airport the tickets, passports, vaccination certificates are checked for passengers from Stockholm at Flygpaviljongen, Nybroplan, between 12.00—18.00. In Copenhagen this check is carried out at DDL, Dagmarhus, Raadhuspladsen, on the day of departure.

Currency. Travellers are advised to take with them travellers' cheques in American dollars and a smaller amount of currency for the country of destination. Small amounts should also be taken in the currencies of the countries in which overnight stops must be made.

Packing of luggage. SAS places overnight bags at the passengers' disposal which are intended for articles which should be within easy reach on board. Other luggage should be packed in two bags, of which only one will be available at overnight stops. This should be borne in mind when packing.

Hotels and meals during the flight. From the take-off of the aircraft all meals and hotel expenses at overnight stops are included in the fare. Rooms are reserved through the air company.

N. B. Passengers possessing a return ticket should get in touch with the SAS bookingoffice at the place from which the return journey will take place at the latest 15 days before a booked return journey.

Booking Offices: Sweden.

Stockholm: Flygcity, Norrmalmstorg 1 and Flygcentralen, Kungsgat. 18. (W 9—17, Sat 9—16). Tel.: 233720. Telegrams: Airticket.
Gothenburg: Trafikcentralen, Slussplatsen 2. (D 6.30—21). Tel.: 174900. Telegrams: Airticket.
Karlstad: Karlstad airport. (D 9—19.30). Tel.: 17200. Telegrams: Abaline.
Luleå: ABA, Travel Bureau, Tullgatan 16. (W 9—12, 13—17, Sat 9—14). Tel. 4080, 4780. Telegrams: Swedair.
Malmö: Bulltofta airport. (D 7—21). Tel.: 19960. Telegrams: Airticket.
Norrköping: Norrköping—Kungsängen airport. (W 9-12, 13.30-17). Tel.: 24680. Telegrams: Abaline.
Visby: ABA, Travel Bureau, Strandgatan 28. (W 9—17.30, S 15—17.30). Tel.: 2398, 2399. Telegrams: Swedair.

Booking Offices: Abroad.

Aalborg: DDL, Jernbanegade 1. Tel.: 9009. Telegrams: Danairlines.
Aarhus: DDL, Raadhuset, Parkallé. Tel.: 1098. Telegrams: Danairlines.
Amsterdam: KLM, Leidscheplein 1—3. Tel.: 38883. Telegrams: Kalmaera.
Ankara: ABA, Isveç Hava Yollari, Selanik Cadd. 62, Yenisehir. Tel.: 5535. Telegrams: Swedair.
Athens: ABA, Venizelos Avenue 16. Tel.: 32-211. Telegrams: Swedair.
Baghdad: ABA, Levantour Corp., Semiramis Building, Rashid Street. Telegrams: Levantour.
Barcelona: IBERIA, Paseo de Gracia 45. Tel.: 20660. Telegrams: Iberiavion.
Brussels: SABENA, 145 Rue Royale. Tel.: 181000. Telegrams: Aairsabena.
Buenos Aires: SAS, Avda. Pte. R. S. Pena 728. Tel.: 34-9369. Telegrams: Sasair.
Cairo: SILA, Swedish Consulate, 25 Shah Adly Pacha. Tel.: 50260. Telegrams: Swedair.
Chicago: SAS, 105 West Monroe Street, Chicago 3. Tel.: Randolph 6984.
Copenhagen: DDL, Travel Bureau, Dagmarhus, Raadhuspladsen. Tel.: Central 8800. Telegrams: Danairlines.
Frankfurt: ABA, Rhine-Main Airport. Tel.: 33 145, extension 347. Telegrams: Abaline.
Geneva: AOA, Carlton Hotel. Tel.: 33291. Telegrams: Amair.
Hamburg: Swissair, 16 Place Cornavin. Tel.: 20400. Telegrams: Swissair.
Hamburg: BEA, Air Terminal, HAPAG Building, 25 Ballindamm. Tel.: 313141—313143. Telegrams: Bealine.
Helsingfors: Aero Travel Bureau, N. Esplanadgatan 2. Tel.: 61441. Telegrams: Aerotravel.
Istanbul: ABA, Isveç Hava Yollari, c/o Antalya Han, Sirkeci. Tel.: 24220. Telegrams: Swedair.
Jerusalem: ABA, H. L. Larsson & Sons Ltd, 177 Nablous Road. Tel.: 4896. Telegrams: Larssonhouse.
Lisbon: Aero Portuguesa Lda, Avenida da Liberdade 120. Tel.: 31128, 31129. Telegrams: Aero.
London: ABA-SAS, 185 Regent Street, London W 1. Tel. REGent 6777. Telegrams: Swedair.
London: BEA, Airways Terminal, Buckingham Palace Road, London SW 1. Tel.: VICToria 2323. Telegrams: Flying.
Madrid: IBERIA, Plaza de Cánovas del Castillo 4. Tel.: 218230. Telegrams: Iberiavion.
Mariehamn: Aero, Firma Erik Nylund, Ekonomigatan 2. Tel.: 1031.
Minneapolis: SAS, 1110 Rand Tower, 6th and Marquette, Minneapolis 2. Tel.: Lincoln 4735.
Montevideo: SAS, Calle 18 de Julio 1121. Tel.: 82600. Telegrams: Sasair.
Moscow: Intourist, Uliza Gorkogo 1. Tel.: K 56152, K 09515, K 19686. Telegrams: Intourist.

Natal:	SAS, Cruzeiro do Sul Ltda, Rua Frei Miguelino 119, Natal, Rio Grande do Norte. Tel.: 1168.
New York:	SAS, 47 East 46th Street, New York 17, and 6 West 51st Street, New York 20. Tel.: Eldorado 5-6701. Telegrams: Nysasaies.
Nice:	AF, 7, Avenue de Suède. Tel.: 879-51, 879-52, 879-53, 879-54. Telegrams: Airfrans.
Oslo:	DNL, Tordenskjoldsgate. Tel.: 42 98 74. Telegrams: Dnlbooking.
Paris:	AF, 119—121, Champs Elysées, Paris 8e. Tel.: BALzac 50—29. Telegrams: Airfrans. 2, Rue Scribe, Paris 9e. Tel.: OPEra 41-00—41-07.
Prague:	CSA, Náměstí Republiky, Prague 1. Tel.: 64282, 64283. Telegrams: Aerolinie.
Prestwick:	SAS, Prestwick Airport. Tel.: 7272. Telegrams: Sasair.
Rio de Janeiro:	SAS, 277 Avenida Rio Branco. Tel. 22-2870. Telegrams: Sasair.
Rome:	Avio Linee Italiane, Via Amendola (ex. Via Regina Elena) 119. Tel.: 470851, 470852. Telegrams: Aviopass.
Teheran:	ABA, c/o Levantour Corp., Maidan Ferdowey. Tel.: 5517. Telegrams: Swedair.
Warsaw:	LOT, Hoza 39. Tel.: 89060. Telegrams: Lot.
Zürich:	Swissair, Hauptbahnhof. Tel.: 27 34 11. Telegr.: Airticket.

Tariff

Section	Passengers		Excess luggage per kg	Freight per kg
	Single	Return		
Aalborg to:	Dcr.	Dcr.	Dcr.	Dcr.
Gothenburg	45:—	81:—	0:45	0:35
Stockholm	136:—	245:—	1:35	1:10
Aarhus to:	Dcr.	Dcr.	Dcr.	Dcr.
Gothenburg	58:—	104:—	0:60	0:45
Stockholm	149:—	268:—	1:50	1:20
Amsterdam to:	Dfl. ⁵⁾	Dfl. ⁵⁾	Dfl. ⁵⁾	Dfl. ⁵⁾
Copenhagen	150:—	270:—	1:50	1:20
Gothenburg (direct)	170:—	306:—	1:70	1:35
Gothenburg (v. Cop.)	183:—	329:40	1:85	1:45
Hamburg	85:—	153:—	0:85	0:70
Helsingfors	302:—	543:60	3:—	2:40
Malmö	157:—	282:60	1:55	1:25
Oslo	206:—	370:80	2:05	1:65
Stockholm	206:—	370:80	2:05	1:65
Ankara to:	₺ 1q.	₺ 1q.	₺ 1q.	₺ 1q.
Athens	176:—	317:— ³⁾	1:75	1:40
Baghdad	368:—	662:—	3:70	2:95
Copenhagen	794:—	1.429:—	7:95	6:35
Frankfurt	653:—	1.175:—	6:55	5:20
Geneva	552:—	994:—	5:50	4:40
Gothenburg	829:—	1.492:—	8:30	6:65
Helsingfors	958:—	1.724:—	9:60	7:65
Istanbul	74:—	133:—	0:75	0:60
London	693:—	1.247:—	6:95	5:55
Malmö	801:—	1.442:—	8:—	6:40
Oslo	839:—	1.510:—	8:40	6:70
Paris	582:—	1.048:—	5:80	4:65
Rome	387:—	697:—	3:85	2:90
Stockholm	856:—	1.541:—	8:55	6:85
Teheran	550:—	990:—	5:50	4:40
Athens to:	₺	₺	₺	₺
Ankara	15.10.— ³⁾	27.18.— ³⁾	3/1	2/5
Baghdad	48.— ³⁾	86. 8.— ³⁾	9/7	7/8
Copenhagen	56.12.— ³⁾	101.18.— ³⁾	11/4	9/1
Frankfurt	44. 4.— ³⁾	79.11.— ³⁾	8/10	7/1
Geneva	35. 6.— ³⁾	63.11.— ³⁾	7/11	5/8
Gothenburg	59.14.— ³⁾	107. 9.— ³⁾	11/11	9/7
Helsingfors	71. 3.— ³⁾	128. 1.— ³⁾	14/3	11/4
Istanbul	9.— ³⁾	16. 4.— ³⁾	1/10	1/5
London	45.12.— ³⁾	82. 2.— ³⁾	9/2	6/8
Lydda	29.— ³⁾	52. 4.— ³⁾	5/10	4/8
Malmö	57. 6.— ³⁾	103. 3.— ³⁾	11/6	9/2
Oslo	60.12.— ³⁾	109. 2.— ³⁾	12/1	9/8
Paris	37.18.— ³⁾	68. 4.— ³⁾	7/7	6/1
Rome	18.12.— ³⁾	33.10.— ³⁾	3/9	3/—
Stockholm	62. 3.— ³⁾	111.17.— ³⁾	12/5	9/11
Teheran	64.— ³⁾	115. 4.— ³⁾	12/10	10/3

Tariff

Section	Passengers		Excess luggage per kg	Freight per kg
	Single	Return		
Baghdad to:	lr. din.	lr. din.	lr. din.	lr. din.
Ankara	32:400	58:300	0:320	0:260
Athens	48:000	86:400 ³⁾	0:480	0:380
Copenhagen	92:000	165:600	0:920	0:740
Frankfurt	83:600	150:500	0:840	0:670
Geneva	27:000	48:500	0:270	0:220
Gothenburg	95:400	171:700	0:950	0:760
Helsingfors	106:000	190 8:0	1:060	0:850
London	10:000	144:000	0:600	0:460
Malmö	52:700	166:900	0:930	0:740
Oslo	97:000	174:600	0:970	0:780
Paris	80:000	144:000	0:800	0:640
Rome	58:000	104:400	0:580	0:460
Stockholm	97:000	174:600	0:970	0:780
Teheran	24:000	43:200	0:240	0:190
Barcelona to:	Swfr. ⁴⁾	Swfr. ⁴⁾	Swfr. ⁴⁾	Swfr. ⁴⁾
Copenhagen	639:— ¹⁾	1.150:— ¹⁾	6 4/4	5:10
Frankfurt	426:— ¹⁾	767:— ¹⁾	4:25	3:40
Geneva	270:— ¹⁾	486:— ¹⁾	2:70	2:15
Gothenburg	693:— ¹⁾	1.247:— ¹⁾	6:95	5:55
Hamburg	530:— ¹⁾	954:— ¹⁾	5:30	4:25
Helsingfors	890:— ¹⁾	1.602:— ¹⁾	8:90	7:10
Malmö	610:— ¹⁾	1.170:— ¹⁾	6:10	5:20
Oslo	735:— ¹⁾	1.323:— ¹⁾	7:35	5:9
Stockholm	734:— ¹⁾	1.321:— ¹⁾	7:35	5:85
Brussels to:	Bfrc.	Bfrc.	Bfrc.	Bfrc.
Copenhagen	2.950:—	5.310:—	29:50	23:60
Gothenburg	3.285:—	5.913:—	32:90	26:30
Hamburg	1.830:—	3.294:—	18:30	14:60
Helsingfors	5.410:—	9.738:—	54:10	43:30
Lydda	12.185:—	21.933:—	121:90	97:50
Malmö	3.075:—	5.535:—	30:80	24:60
Oslo	4.080:—	7.344:—	40:80	32:60
Stockholm	3.880:—	6.984:—	38:80	31:—
Buenos Aires to:	PA	PA	PA	PA
Copenhagen	3.235:—	5.823:—	32:40	25:90
Geneva	3.005:—	5.409:—	30:10	24:—
Oslo	3.285:—	5.913:—	32:90	26:30
Stockholm	3.315:—	5.967:—	33:20	26:50
Copenhagen to:	Dcr.	Dcr.	Dcr.	Dcr.
Amsterdam	275:—	495:—	2:75	2:20
Ankara	1.354:—	2.437:—	13:55	10:85
Athens	1.009:—	1.971:— ³⁾	10:05	8:75
Baghdad	1.780:—	3.204:—	17:80	14:25
Barcelona	713:— ¹⁾	1.283:— ¹⁾	7:15	5:70
Brussels	325:—	585:—	3:25	2:60
Buenos Aires	3.790:—	6.822:—	37:90	30:30
Dakar	1.760:—	3.168:—	17:60	14:10
Frankfurt	300:—	540:—	3:—	2:40
Gander	1.368:—	2.462:—	13:70	10:95
Geneva	412:—	742:—	4:10	3:30
Glasgow (direct)	375:—	675:—	3:75	3:—
Glasgow (v. Gothenb.)	387:—	697:—	3:85	3:10
Gothenburg	67:—	121:—	0:65	0:55
Hamburg	124:—	223:—	1:25	1:—
Helsingfors	292:—	526:—	2:90	2:35
Istanbul	1.230:—	2.214:—	12:30	9:85
London	860:— ¹⁾	1.548:— ¹⁾	8:60	6:90
Lydda	396:—	713:—	3:95	3:15
Malmö	1.511:—	2.720:—	15:10	12:10
Madrid	815:— ¹⁾	1.467:— ¹⁾	8:15	6:50
Malmö	15:—	27:—	0:25	0:25
Montevideo	3.750:—	6.750:—	37:50	30:—
Moscow	692:—	1.246:—	6:90	5:55
Natal	2.860:—	5.148:—	28:60	22:90
New York	1.872:—	3.378:—	18:70	15:—
Nice	560:—	1.008:—	5:60	4:50
Oslo	131:—	236:—	1:30	1:05
Paris	395:—	711:—	3:95	3:15
Prague	325:—	585:—	3:25	2:60
Rio de Janeiro	3.305:—	5.949:—	33:05	26:45
Rome	1.325:—	2.415:—	13:25	10:30
Santiago	4.025:—	7.245:—	40:25	32:90
Stockholm	118:—	212:—	1:20	0:95
Teheran	2.051:—	3.692:—	20:50	16:40
Zürich	375:—	675:—	3:75	3:—
Dakar to:	CFA	CFA	CFA	CFA
Copenhagen	25.700:—	46.260:—	257:—	206:—
Geneva	21.700:—	39.060:—	217:—	174:—
Helsingfors	29.600:—	53.280:—	296:—	237:—
Lisbon	15.000:— ¹⁾	27.000:— ¹⁾	150:—	120:—
Montevideo	30.200:—	54.360:—	302:—	242:—
Natal	18.400:—	33.120:—	184:—	147:—

Tariff

Section	Passengers		Excess luggage per kg	Freight per kg
	Single	Return		
<i>(Dakar to:)</i>				
Oslo	26.500:—	47.700:—	265:—	212:—
Paris	21.700:—	39.060:—	217:—	174:—
Rio de Janeiro	23.400:—	42.120:—	234:—	187:—
Stockholm	27.100:—	48.780:—	271:—	217:—
Frankfurt to:				
	US \$	US \$	US \$	US \$
Ankara	232:30	418:10	2:32	1:86
Athens	178:30	320:90 ³⁾	1:78	1:42
Baghdad	337:30	607:10	3:37	2:70
Barcelona	98:— ¹⁾	176:40 ¹⁾	0:98	0:78
Copenhagen	63:—	113:40	0:63	0:50
Geneva	36:—	64:80	0:36	0:29
Gothenburg	76:—	136:80	0:75	0:60
Hamburg	38:—	68:40	0:38	0:30
Helsingfors	122:—	219:60	1:22	0:98
Istanbul	206:40	371:50	2:06	1:65
Lydda	273:—	491:40	2:73	2:18
Madrid	128:— ¹⁾	230:40 ¹⁾	1:28	1:02
Malmö	66:—	118:80	0:66	0:53
Nice	120:60	207:60	0:87	0:74
Oslo	86:—	154:80	0:86	0:69
Rome	103:30	185:90	1:03	0:82
Stockholm	86:—	154:80	0:86	0:69
Teheran	377:70	679:90	3:78	3:02
Zürich	28:—	50:40	0:28	0:22
Gander to:				
	Can. \$	Can. \$	Can. \$	Can. \$
Copenhagen	282:—	507:60	2:82	2:26
Glasgow	201:—	361:80	2:01	1:61
New York	104:—	188:90	1:04	0:83
Oslo	284:—	511:20	2:84	2:27
Stockholm	301:—	541:80	3:01	2:41
Geneva to:				
	Swfr.	Swfr.	Swfr.	Swfr.
Ankara	845:—	1.521:—	8:45	6:75
Athens	612:—	1.102:— ³⁾	6:10	4:90
Baghdad	1.296:— ¹⁾	2.333:—	12:95	10:35
Barcelona	270:— ¹⁾	486:— ¹⁾	2:70	2:15
Buenos Aires	3.160:—	5.688:—	31:60	25:30
Copenhagen	369:—	664:—	3:70	2:95
Dakar	1.333:—	2.403:—	13:35	10:70
Frankfurt	156:—	281:—	1:55	1:25
Gothenburg	423:—	761:—	4:25	3:40
Hamburg	260:—	468:—	2:60	2:10
Helsingfors	620:—	1.116:—	6:20	4:95
Istanbul	733:—	1.319:—	7:35	5:85
Lisbon	530:— ¹⁾	954:— ¹⁾	5:30	4:25
Lydda	1.010:—	1.818:—	10:10	8:10
Madrid	400:— ¹⁾	720:— ¹⁾	4:00	3:20
Malmö	380:—	684:—	3:80	3:05
Montevideo	3.125:—	5.625:—	31:25	25:—
Natal	2.325:—	4.185:—	23:25	18:60
Nice	133:—	239:—	1:35	1:05
Oslo	465:—	837:—	4:65	3:70
Rio de Janeiro	2.725:—	4.905:—	27:25	21:80
Rome	290:—	522:—	2:90	2:30
Santiago	3.365:—	6.057:—	33:65	26:90
Stockholm	464:—	835:—	4:65	3:70
Teheran	1.470:—	2.646:—	14:70	11:75
Glasgow to:				
	£	£	£	£
Copenhagen (direct)	19. 8.—	34.18.—	3/11	3/1
Copenh. (v. Gothenb.)	20. —	36. —	4.—	3/2
Gander	49.19.—	89.18.—	10/—	8/—
Gothenburg ³⁾	22.10.—	40.10.—	4/6	3/7
Gothenburg	17. 6.—	31. 3.—	3/6	2/9
Malmö	20. 3.—	36. 5.—	4/—	3/3
New York	75.16.—	135.16.—	15/2	12/2
Oslo (direct)	19. 8.—	34.18.—	3/11	3/1
Oslo (via Gothenburg)	20.12.—	37. 2.—	4/1	3/4
Stockholm ³⁾	24.16.—	44.13.—	5/—	4/—
Stockh. (via Gothenb.)	22. —	39.12.—	4/5	3/6
Gothenburg to:				
	Swcr.	Swcr.	Swcr.	Swcr.
Aalborg	35:—	63:—	0:35	0:30
Aarhus	43:—	77:—	0:45	0:35
Amsterdam (direct)	230:—	414:—	2:30	1:85
Amsterdam (v. Cop.)	251:—	452:—	2:50	2:—
Ankara	1.059:—	1.906:—	10:60	8:45
Athens	865:—	1.557:— ³⁾	8:65	6:90
Baghdad	1.382:—	2.488:—	11:05	8:50
Barcelona	579:— ¹⁾	1.042:— ¹⁾	5:80	4:65
Brussels	269:—	484:—	2:70	2:15
Buenos Aires	2.890:—	5.202:—	28:90	23:10
Copenhagen	50:—	90:—	0:50	0:40
Dakar	1.370:—	2.466:—	13:70	10:95
Frankfurt	270:—	486:—	2:70	2:15
Geneva	354:—	637:—	3:55	2:85

Tariff

Section	Passengers		Excess luggage per kg	Freight per kg
	Single	Return		
<i>(Gothenburg to:)</i>				
Glasgow ³⁾	326:—	587:—	3:25	2:60
Glasgow (direct)	251:—	452:—	2:50	2:—
Hamburg	138:—	248:—	1:40	1:10
Helsingfors	198:—	356:—	2:—	1:60
Istanbul	966:—	1.739:—	9:65	7:75
Lisbon	689:— ¹⁾	1.240:— ¹⁾	6:90	5:50
London	252:—	452:—	2:50	2:30
Lydda	1.182:—	2.128:—	11:80	9:45
Madrid	655:— ¹⁾	1.179:— ¹⁾	6:55	5:25
Malmö	50:—	90:—	0:50	0:50
Montevideo	2.865:—	5.157:—	28:65	22:90
Natal	2.195:—	3.951:—	21:95	17:55
New York	1.364:—	2.461:—	13:65	10:90
Nice	464:—	835:—	4:65	3:70
Oslo	48:—	86:—	0:50	0:40
Paris	326:—	587:—	3:25	2:60
Prague	293:—	527:—	2:95	2:35
Rio de Janeiro	2.530:—	4.554:—	25:30	20:25
Rome	578:—	1.040:—	5:80	4:60
Santiago	3.065:—	5.517:—	30:65	24:50
Stockholm	68:—	122:40	0:70	0:70
Teheran	1.581:—	2.846:—	15:80	12:65
Visby	113:—	203:40	1:15	1:15
Zürich	326:—	587:—	3:25	2:60
Hamburg to:				
	£	£	£	£
Amsterdam	8. —	14. 8.—	1/7	1/3
Barcelona	30.61— ¹⁾	55. — ¹⁾	6/11	4/11
Brussels	10. 8.—	18.14.— ¹⁾	2/1	1/8
Copenhagen	6. 8.—	11.10.—	1/3	1/1
Frankfurt	9. 9.—	17. —	1/11	1/6
Geneva	15. —	27. —	3/—	2/5
Gothenburg	9.10.—	17. 2.—	1/11	1/6
Helsingfors	20.19.—	37.14.—	4/2	3/4
Madrid	38. 1.— ¹⁾	68.10.— ¹⁾	7/7	6/1
Malmö	7. —	12.12.—	1/5	1/5
Nice	22.13.—	40.15.—	4/6	3/8
Stockholm	11.19.—	21.10.—	2/4	1/11
Zürich	13. —	23. 8.—	2/7	2/1
Helsingfors to:				
	Fmk.	Fmk.	Fmk.	Fmk.
Amsterdam	15.400:—	27.720:—	154:—	123:—
Ankara	45.900:—	82.620:—	459:—	367:—
Athens	38.650:—	69.550:— ³⁾	387:—	309:—
Baghdad	57.450:—	103.410:—	575:—	460:—
Barcelona	27.900:— ¹⁾	50.200:— ¹⁾	279:—	223:—
Brussels	17.050:—	30.700:—	171:—	136:—
Copenhagen	8.200:—	14.760:—	82:—	66:—
Frankfurt	16.350:—	29.450:—	164:—	131:—
Geneva	19.500:—	35.100:—	195:—	156:—
Gothenburg	7.500:—	13.500:—	75:—	60:—
Hamburg	11.400:—	20.500:—	114:—	91:—
Istanbul	42.400:—	76.300:—	424:—	339:—
Karlstad	6.900:—	12.420:—	69:—	55:—
Lisbon	32.050:— ¹⁾	57.700:— ¹⁾	321:—	256:—
London	18.250:—	32.850:—	183:—	146:—
Madrid	30.750:— ¹⁾	55.350:— ¹⁾	308:—	246:—
Malmö	7.850:—	14.130:—	79:—	63:—
Mariehamn	2.400:—	4.320:—	24:—	19:—
Moscow				
	Rouble	Rouble	Rouble	Rouble
Moscow	440:—	792:—	4:40	3:50
New York				
	Fmk.	Fmk.	Fmk.	Fmk.
New York	60.150:—	108.250:—	602:—	481:—
Nice	23.600:—	42.500:—	236:—	189:—
Oslo	8.300:—	14.940:—	83:—	66:—
Paris	19.000:—	34.200:—	190:—	152:—
Prague	17.050:—	30.700:—	171:—	136:—
Rome	28.550:—	51.400:—	286:—	228:—
Stockholm	8.910:—	16.220:—	89:—	70:—
Teheran	65.400:—	117.700:—	654:—	523:—
Visby	6.650:—	11.950:—	67:—	53:—
Warsaw	13.900:—	25.000:—	139:—	111:—
Zürich	18.450:—	33.200:—	185:—	148:—
Åbo	1.400:—	2.520:—	14:—	11:—
Istanbul to:				
	£ ta.	£ ta.	£ ta.	£ ta.
Ankara	74:—	133:—	0:75	0:60
Athens	102:—	184:— ³⁾	1:—	0:80
Copenhagen	721:—	1.298:—	7:20	5:75
Frankfurt	580:—	1.044:—	5:80	4:65
Geneva	865:—	1.622:—	8:65	6:90
Gothenburg	756:—	1.361:—	7:55	6:05
Helsingfors	885:—	1.593:—	8:85	7:10
London	619:—	1.114:—	6:20	4:95
Malmö	729:—	1.312:—	7:30	5:85
Oslo	766:—	1.379:—	7:65	6:15
Paris	557:—	1.003:—	5:55	4:45
Rome	313:—	563:—	3:15	2:30

Tariff

Section	Passengers		Excess luggage per kg	Freight per kg
	Single	Return		
<i>(Istanbul to:)</i>				
Stockholm	783:—	1.409:—	7:85	6:25
Teheran	624:—	1.123:—	5:—	5:—
Karlstad to:				
Swcr.	Swcr.	Swcr.	Swcr.	Swcr.
Helsingfors	182:—	328:—	1:80	1:45
Oslo	43:—	77:—	0:45	0:35
Stockholm	52:—	93:60	0:50	0:50
Lisbon to:				
Esc.	Esc.	Esc.	Esc.	Esc.
Copenhagen	4.530:— ¹⁾	8.010:— ¹⁾	44:50	35:60
Dakar	5.300:— ¹⁾	9.540:— ¹⁾	53:—	42:50
Geneva	3.075:— ¹⁾	5.535:— ¹⁾	30:80	24:60
Gothenburg	4.76:— ¹⁾	8.568:— ¹⁾	47:60	38:10
Helsingfors	5.830:— ¹⁾	10.494:— ¹⁾	58:30	46:60
London	2.800:— ¹⁾	5.040:— ¹⁾	28:—	20:80
Lydda	7.875:— ¹⁾	14.175:— ¹⁾	78:80	63:—
Malmö	4.520:— ¹⁾	8.136:— ¹⁾	45:20	36:20
Montevideo	15.600:— ¹⁾	28.080:— ¹⁾	156:—	125:—
Natal	11.000:— ¹⁾	19.800:— ¹⁾	110:—	88:—
Oslo	4.780:— ¹⁾	8.604:— ¹⁾	47:80	38:20
Paris	2.400:— ¹⁾	4.320:— ¹⁾	24:—	19:20
Rio de Janeiro	13.300:— ¹⁾	23.940:— ¹⁾	133:—	106:50
Stockholm	4.930:— ¹⁾	8.874:— ¹⁾	49:30	39:40
London to:				
£	£	£	£	£
Ankara (via Geneva)	61. 2.—	110. —.—	12/3	9/9
Athens (via Geneva)	45.12.—	82. 2.— ³⁾	9/2	6/8
Baghdad (via Geneva)	80. —.—	144. —.—	16:—	12/10
Copenhagen	20.10.—	36.18.—	4/1	3/3
Gothenburg	20. —.—	36. —.—	3/2	3/2
Helsingfors	33.10.—	60. 6.—	6/8	5/4
Istanbul	54.12.—	98. 6.—	10/11	8/1
Lisbon	28. —.— ¹⁾	50. 8.— ¹⁾	5/7	4/2
Lydda (via Geneva)	70. —.—	126. —.—	14:—	11/2
Malmö (via Copenh.)	21. 5.—	38. 5.—	4/3	3/5
Malmö (via Gothenb.)	22. —.—	39.12.—	4/4	3/6
Nice (via Geneva)	21.13.—	38.19.—	4/4	3/6
Oslo	22. —.—	39.12.—	4/4	3/6
Rome	27. —.—	48.12.—	5/5	4/—
Stockholm	24.10.—	44. 2.—	4/11	3/11
Teheran (via Geneva)	90.14.—	177.13.—	19/9	15/10
Lydda to:				
£	£	£	£	£
Athens	29. —.—	52. 4.— ³⁾	5/10	4/8
Brussels	69. —.—	124. 4.— ³⁾	13/10	11/—
Copenhagen	78. 3.—	140.13.—	15/8	12/6
Frankfurt	67.16.—	122. 1.—	13/7	10/10
Geneva	58.10.—	105. 6.—	11/8	9/4
Gothenburg	81.12.—	146.18.—	16/4	13/1
London	70. —.—	126. —.—	14:—	11/2
Malmö	78.17.—	141.19.—	15/9	12/9
Oslo	82. —.—	147.12.—	16/5	13/11
Paris	70. —.—	126. —.—	14:—	11/2
Rome	45.10.—	81.18.—	9/2	7/2
Stockholm	83.14.—	150.13.—	16/9	13/5
Teheran	39. —.—	70. 4.—	7/10	6/3
Madrid to:				
Swfrc. ⁴⁾	Swfrc. ⁴⁾	Swfrc. ⁴⁾	Swfrc. ⁴⁾	Swfrc. ⁴⁾
Copenhagen	769:— ¹⁾	1.384:— ¹⁾	7:70	6:15
Frankfurt	556:— ¹⁾	1.001:— ¹⁾	5:55	4:45
Geneva	400:— ¹⁾	770:— ¹⁾	4:—	3:20
Gothenburg	823:— ¹⁾	1.461:— ¹⁾	8:25	6:60
Hamburg	660:— ¹⁾	1.188:— ¹⁾	6:60	5:30
Helsingfors	1.020:— ¹⁾	1.836:— ¹⁾	8:15	6:45
Lydda	1.410:— ¹⁾	2.538:— ¹⁾	14:10	11:30
Malmö	780:— ¹⁾	1.404:— ¹⁾	7:80	6:25
Oslo (via Copenh.)	865:— ¹⁾	1.557:— ¹⁾	8:65	6:90
Stockholm	864:— ¹⁾	1.555:— ¹⁾	8:65	6:90
Malmö to:				
Swcr.	Swcr.	Swcr.	Swcr.	Swcr.
Amsterdam	216:—	389:—	2:15	1:75
Ankara	1.024:—	1.843:—	10:25	8:20
Athens	830:—	1.494:— ³⁾	8:30	6:65
Baghdad	1.343:—	2.417:—	13:45	10:75
Barcelona	544:— ¹⁾	979:— ¹⁾	5:45	4:35
Brussels	253:—	455:—	2:55	2:—
Buenos Aires	2.855:—	5.139:—	28:55	22:85
Copenhagen	11:—	20:—	0:20	0:20
Dakar	1.330:—	2.394:—	13:30	10:65
Frankfurt	235:—	423:—	2:35	1:90
Geneva	319:—	574:—	3:20	2:55
Glasgow	292:—	526:—	2:90	2:35
Gothenburg	50:—	90:—	0:50	0:50
Hamburg	185:—	335:—	1:40	1:10
Helsingfors	207:—	373:—	2:05	1:65
Istanbul	931:—	1.676:—	9:30	7:45
Lisbon	654:— ¹⁾	1.177:— ¹⁾	6:55	5:25
London (via Copenh.)	308:—	554:—	3:10	2:45
London (via Gothenb.)	319:—	574:—	3:20	2:55

Tariff

Section	Passengers		Excess luggage per kg	Freight per kg
	Single	Return		
<i>(Malmö to:)</i>				
Lydda	1.142:—	2.056:—	11:40	9:15
Madrid	620:— ¹⁾	1.116:— ¹⁾	6:20	4:95
Montevideo	2.825:—	5.085:—	22:85	22:60
Natal	2.155:—	3.879:—	21:55	17:25
New York	1.419:—	2.560:—	14:20	11:35
Nice	429:—	772:—	4:30	3:45
Oslo	176:—	98:—	1:—	0:80
Paris	306:—	551:—	3:05	2:45
Prague	253:—	455:—	2:55	2:—
Rio de Janeiro	2.490:—	4.482:—	24:90	19:90
Rome	561:—	1.010:—	5:60	4:50
Santiago	3.025:—	5.445:—	30:25	24:20
Stockholm	77:—	138:60	0:75	0:75
Teheran	1.546:—	2.783:—	15:45	12:35
Visby	122:—	219:60	1:20	1:20
Zürich	291:—	524:—	2:90	2:35
Mariehamn to:				
Fmk.	Fmk.	Fmk.	Fmk.	Fmk.
Helsingfors	2.400:—	4.320:—	24:—	19:—
Stockholm	2.450:—	4.410:—	24:—	20:—
Åbo	1.100:—	1.980:—	11:—	9:—
Montevideo to:				
PU	PU	PU	PU	PU
Copenhagen	1.397:—	2.514:60	13:95	11:20
Dakar	1.386:—	2.510:—	13:70	11:15
Geneva	1.296:—	2.332:80	12:95	10:35
Helsingfors	1.498:—	2.696:40	15:—	12:—
Lisbon	1.123:— ¹⁾	2.021:40 ¹⁾	11:25	9:—
Oslo	1.418:—	2.552:40	14:20	11:35
Stockholm	1.433:—	2.579:40	14:35	11:45
Moscow to:				
Rouble	Rouble	Rouble	Rouble	Rouble
Copenhagen	765:—	1.377:—	7:65	6:10
Helsingfors	440:—	792:—	4:40	3:50
Oslo	769:—	1.384:—	7:70	6:15
Stockholm	635:—	1.143:—	6:35	5:10
Natal to:				
Cr. g.	Cr. g.	Cr. g.	Cr. g.	Cr. g.
Copenhagen	12.000:—	21.600:—	120:—	90:—
Dakar	5.275:—	9.495:—	53:—	42:50
Geneva	10.850:—	19.530:—	108:50	87:—
Helsingfors	13.125:—	23.625:—	131:—	105:—
Lisbon	8.890:— ¹⁾	16.020:— ¹⁾	89:—	71:—
Oslo	12.225:—	22.005:—	122:50	98:—
Paris	10.850:—	19.530:—	108:50	87:—
Stockholm	12.400:—	22.320:—	124:—	99:—
New York to:				
US g.	US g.	US g.	US g.	US g.
Copenhagen	386:—	696:50	3:86	3:09
Gander	104:—	188:90	1:04	0:83
Glasgow	305:—	550:70	3:05	2:44
Gothenburg	345:—	676:70	3:45	2:76
Helsingfors	441:—	793:80	4:41	3:53
Malmö	389:—	701:90	3:89	3:10
Oslo	388:—	700:10	3:88	3:10
Stockholm	405:—	730:70	4:05	3:24
Nice to:				
Ffrfc.	Ffrfc.	Ffrfc.	Ffrfc.	Ffrfc.
Copenhagen	13.800:—	24.840:—	138:—	110:—
Frankfurt	7.950:—	14.310:—	80:—	64:—
Geneva	3.700:—	6.660:—	37:—	30:—
Gothenburg	15.360:—	27.540:—	153:—	122:—
Hamburg	10.850:—	19.530:—	109:—	87:—
Helsingfors	20.700:—	37.260:—	207:—	166:—
London (via Geneva)	10.400:—	18.720:—	104:—	83:—
Malmö	14.100:—	25.380:—	141:—	113:—
Oslo	16.500:—	29.700:—	165:—	132:—
Stockholm	16.400:—	29.520:—	164:—	131:—
Oslo to:				
Ncr.	Ncr.	Ncr.	Ncr.	Ncr.
Amsterdam	385:—	693:—	3:85	3:10
Ankara	1.480:—	2.664:—	14:80	11:85
Athens	1.212:—	2.182:— ³⁾	12:10	9:70
Baghdad	1.940:—	3.492:—	19:40	15:50
Barcelona	865:— ¹⁾	1.557:— ¹⁾	8:65	6:90
Brussels	464:—	835:—	4:65	3:70
Buenos Aires	3.960:—	7.164:—	39:60	31:80
Copenhagen	135:—	243:—	1:35	1:10
Dakar	1.880:—	3.384:—	18:80	15:05
Frankfurt	421:—	758:—	4:21	3:35
Gander	1.420:—	2.556:—	14:20	11:35
Geneva	536:—	965:—	5:35	4:30
Glasgow (direct)	383:—	698:—	3:90	3:10
Glasgow (v. Gothenb.)	742:—	1.340:—	7:42	6:10
Gothenburg	66:—	119:—	0:65	0:55
Helsingfors	305:—	549:—	3:05	2:45
Istanbul	1.351:—	2.432:—	13:50	10:80
Karlstad	60:—	108:—	0:60	0:50
Lisbon ⁴⁾	940:— ¹⁾	1.692:— ¹⁾	9:40	7:50

Tariff

Section	Passengers		Excess luggage per kg	Freight per kg
	Single	Return		
<i>(Oslo to:)</i>				
Lisbon (via Copenh.)	1.017:— ¹⁾	1.831:— ¹⁾	10:15	8:15
London	440:—	792:—	4:40	3:50
Lydda	1.640:—	2.952:—	16:40	13:10
Madrid (via Copenh.)	971:— ¹⁾	1.748:— ¹⁾	9:70	7:75
Malmö	135:—	243:—	1:35	1:10
Montevideo	3.940:—	7.092:—	39:40	31:50
Natal	3.020:—	5.436:—	30:20	24:15
New York	1.940:—	3.501:—	19:40	15:50
Nice (via Copenh.)	692:—	1.246:—	6:90	5:55
Paris (via Copenh.)	520:—	936:—	5:20	4:15
Prague (via Copenh.)	471:—	848:—	4:70	3:75
Rio de Janeiro	3.480:—	6.264:—	34:80	27:95
Rome (via Copenh.)	840:—	1.512:—	8:40	6:70
Santiago	4.200:—	7.560:—	42:—	33:60
Stockholm	132:—	238:—	1:30	1:05
Teheran (via Copenh.)	2.249:—	4.048:—	22:50	18:—
Zürich (via Copenh.)	500:—	900:—	5:—	4:—
Paris to:				
	Ffr. c.	Ffr. c.	Ffr. c.	Ffr. c.
Ankara (via Geneva)	24.600:—	44.280:—	246:—	197:—
Athens (via Geneva)	18.200:—	32.760:— ³⁾	182:—	146:—
Baghdad (via Geneva)	38.400:—	69.120:—	384:—	307:—
Copenhagen	9.800:—	17.640:—	98:—	78:—
Gothenburg	10.800:—	19.440:—	108:—	86:—
Helsingfors	16.700:—	30.060:—	167:—	134:—
Istanbul (via Geneva)	21.500:—	38.700:—	215:—	172:—
Lisbon	11.350:— ¹⁾	20.430:— ¹⁾	114:—	91:—
Lydda (via Geneva)	33.600:—	60.480:—	336:—	269:—
Malmö	10.100:—	18.180:—	101:—	81:—
Oslo (via Copenh.)	12.500:—	22.500:—	125:—	100:—
Rome (via Geneva)	11.350:—	20.430:—	114:—	91:—
Stockholm	12.400:—	22.320:—	124:—	99:—
Teheran (via Geneva)	44.000:—	79.200:—	440:—	352:—
Prague to:				
	Kc.	Kc.	Kc.	Kc.
Copenhagen	3.400:—	6.120:—	34:—	27:—
Gothenburg (via Cop.)	4.090:—	7.362:—	41:—	33:—
Helsingfors	6.220:—	11.196:—	62:—	50:—
Lydda (via Geneva)	15.290:—	27.522:—	153:—	122:—
Malmö	3.550:—	6.390:—	36:—	29:—
Oslo (via Copenh.)	4.710:—	8.478:—	47:—	38:—
Stockholm	4.500:—	8.100:—	45:—	36:—
Rio de Janeiro to:				
	Cr. \$	Cr. \$	Cr. \$	Cr. \$
Copenhagen	13.850:—	24.930:—	138:50	111:—
Dakar	6.725:—	12.105:—	68:—	54:—
Geneva	12.725:—	22.905:—	127:50	102:—
Helsingfors	14.975:—	26.955:—	150:—	120:—
Lisbon	10.775:— ¹⁾	19.395:— ¹⁾	108:—	86:—
Oslo	14.100:—	25.380:—	141:—	113:—
Paris	12.725:—	22.905:—	127:50	102:—
Stockholm	14.250:—	25.650:—	142:50	114:—
Rome to:				
	₯	₯	₯	₯
Ankara	34. 2.—	61. 8.—	6/10	5/1
Athens	18.12.—	33.10.— ³⁾	3/9	3/—
Baghdad	58.—	104. 8.—	11/7	9/3
Copenhagen	38.—	68. 8.—	7/7	6/1
Frankfurt	25.12.—	46. 1.—	5/1	4/—
Geneva	16.14.—	30. 1.—	3/4	2/8
Gothenburg	39.18.—	71.16.—	8/—	6/5
Helsingfors	52.11.—	94.12.—	10/6	8/5
Istanbul	27.12.—	49.14.—	5/6	4/1
London	27.—	48.12.—	5/5	4/—
Lydda	45.10.—	81.18.—	9/2	7/2
Malmö	38.15.—	69.15.—	8/9	6/9
Oslo (via Copenh.)	42.—	75.12.—	8/5	6/9
Paris	23.12.—	42.10.—	4/9	3/9
Stockholm	43.11.—	78. 8.—	8/7	7/—
Teheran	68.—	122. 8.—	13/7	10/11
Stockholm to:				
	Sw. c.	Sw. c.	Sw. c.	Sw. c.
Aalborg	103:—	185:—	0:90	0:90
Aarhus	111:—	200:—	1:10	0:90
Amsterdam	279:—	502:—	2:80	2:25
Ankara	1.094:—	1.969:—	10:95	8:75
Athens	900:—	1.620:— ³⁾	9:—	7:20
Baghdad	1.405:—	2.529:—	14:05	11:25
Barcelona	614:— ¹⁾	1.105:— ¹⁾	6:15	4:90
Brussels	372:—	672:—	3:55	2:55
Buenos Aires	2.915:—	5.247:—	29:15	23:30
Copenhagen	88:—	158:—	0:90	0:70
Dakar	1.390:—	2.502:—	13:90	11:10
Frankfurt	305:—	549:—	3:05	2:45
Gander	1.099:—	1.978:—	11:—	8:80
Geneva	389:—	700:—	3:90	3:10
Glasgow*)	359:—	646:—	3:60	2:90

Tariff

Section	Passengers		Excess luggage per kg	Freight per kg
	Single	Return		
<i>(Stockholm to:)</i>				
Glasgow (v. Gothenb.)	319:—	574:—	3:20	2:55
Gothenburg	68:—	122:40	0:70	0:70
Hamburg	173:—	311:—	1:75	1:40
Helsingfors	130:—	234:—	1:30	1:05
Istanbul	1.001:—	1.802:—	10:—	8:—
Karlstad	52:—	93:60	0:50	0:50
Lisbon	724:— ¹⁾	1.303:— ¹⁾	7:25	5:80
London	355:—	639:—	3:55	2:85
Lydda	1.270:—	2.182:—	12:10	9:70
Madrid	690:— ¹⁾	1.242:— ¹⁾	6:90	5:50
Mariehamn	65:—	117:—	0:65	0:50
Malmö	77:—	138:60	0:75	0:75
Montevideo	2.885:—	5.193:—	28:85	23:10
Moscow	430:—	774:—	4:30	3:45
Natal	2.220:—	3.996:—	22:20	17:75
New York	1.478:—	2.667:—	14:80	11:85
Nice	499:—	898:—	5:—	4:—
Oslo	95:—	171:—	0:95	0:75
Paris	376:—	677:—	3:75	3:—
Prague	323:—	581:—	3:25	2:60
Rio de Janeiro	2.550:—	4.590:—	25:50	20:40
Rome	631:—	1.136:—	6:30	5:05
Santiago	3.090:—	5.562:—	30:90	24:70
Teheran	1.616:—	2.909:—	16:15	12:95
Visby	45:—	81:—	0:45	0:45
Warsaw	239:—	430:—	2:40	1:90
Zürich	361:—	650:—	3:60	2:90
Åbo	95:—	171:—	0:95	0:75
Teheran to:				
	₯	₯	₯	₯
Ankara	48.10.—	87. 6.—	9/8	7/9
Athens	64.—	115. 4.— ³⁾	12/10	10/3
Baghdad	24.—	43. 4.—	4/10	3/13
Copenhagen	106.—	190.16.—	1.1.2	17/—
Frankfurt	93.12.—	168.10.—	18/9	15/—
Geneva	84.14.—	152. 9.—	16/11	13/7
Gothenburg	109. 3.—	196. 9.—	1.1.10	17/6
Helsingfors	120.11.—	217. —	1.2.1	19/3
Istanbul	55.—	99.—	11/—	8/10
London	98.14.—	177.13.—	19/9	15/10
Lydda	39.—	70. 4.—	7/10	6/3
Malmö	106.15.—	192. 3.—	1.1.4	17/1
Oslo	112. 8.—	202. 6.—	1.2.6	18/—
Paris	91.12.—	164.18.—	18/4	14/8
Rome	68.—	122. 8.—	13/7	10/11
Stockholm	111.11.—	200.16.—	1.2.4	17/10
Visby to:				
	Sw. c.	Sw. c.	Sw. c.	Sw. c.
Gothenburg	113:—	203:40	1:15	1:15
Malmö	122:—	219:60	1:20	1:20
Stockholm	45:—	81:—	0:45	0:45
Warsaw to:				
	Zlotys*)	Zlotys*)	Zlotys*)	Zlotys*)
Helsingfors	10.700:—	19.260:—	107:—	86:—
Stockholm	7.000:—	12.600:—	70:—	56:—
Zürich to:				
	Swfr. c.	Swfr. c.	Swfr. c.	Swfr. c.
Copenhagen	335:—	603:—	3:35	2:70
Frankfurt	122:—	220:—	1:20	1:—
Gothenburg	390:—	702:—	3:90	3:10
Hamburg	226:—	407:—	2:25	1:80
Helsingfors	586:—	1.055:—	5:85	4:70
Malmö	346:—	623:—	3:45	2:75
Oslo (via Copenh.)	446:—	803:—	4:45	3:55
Stockholm	430:—	774:—	4:30	3:45
Åbo to:				
	Fmk.	Fmk.	Fmk.	Fmk.
Helsingfors	1.400:—	2.520:—	14:—	11:—
Mariehamn	1.100:—	1.980:—	11:—	9:—
Stockholm	3.550:—	6.390:—	36:—	28:—

¹⁾ Additional tax on journeys to and from Portugal and Spain.

²⁾ By ABA.

³⁾ Additional tax on journeys from Athens.

⁴⁾ Owing to currency restrictions imposed by the Polish Government, all fares must be paid in foreign currency, though passengers of Polish nationality resident in Poland may pay in zlotys.

⁵⁾ Owing to currency restrictions imposed by the Netherlands Government, all fares must be paid in foreign currency, though passengers of Dutch nationality resident in the Netherlands may pay in Dfl.

⁶⁾ Owing to currency restrictions imposed by the Spanish Government, all fares must be paid in foreign currency, though passengers of Spanish nationality resident in Spain may pay in pesetas for single tickets only.

⁷⁾ Owing to currency restrictions imposed by the Italian Government, all fares must be paid in foreign currency, though passengers of Italian nationality resident in Italy may pay in lire.

⁸⁾ Via Amsterdam and by SAS.

⁹⁾ By SAS.