

ICELANDAIR



ICELANDAIR



time table

time table

AGENT -

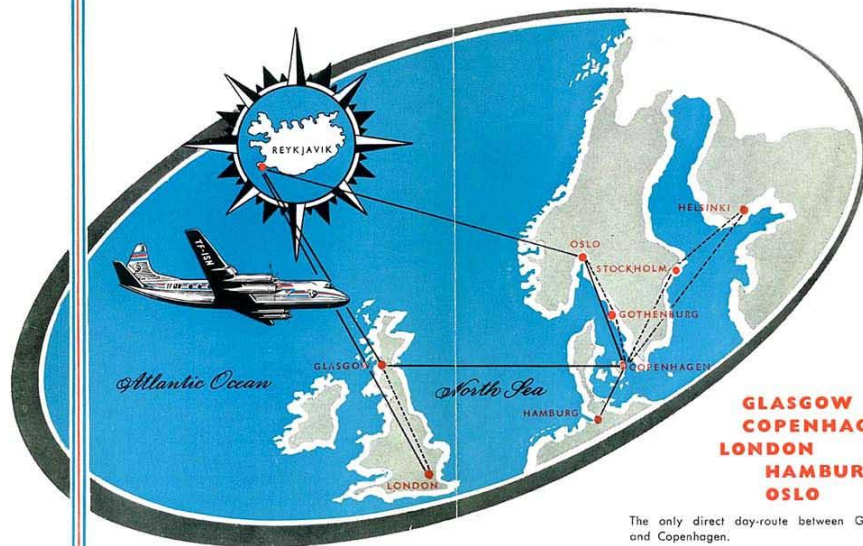
VALID FROM FIRST JUNE 1957

ICELANDAIR

FLUGFÉLAG ÍSLANDS, H. F.

THE BIGGEST LITTLE AIRLINE IN THE WORLD

FLY **VISCOUNT** TO ICELAND



**GLASGOW
COPENHAGEN
LONDON
HAMBURG
OSLO**

The only direct day-route between Glasgow and Copenhagen.

ICELANDAIR

CONTENTS

- | | | | |
|----------|--|-----------|------------------------|
| 1 | Iceland - Scotland - Norway
Denmark - Germany | 10 | Hamburg - Reykjavik |
| 2 | Germany - Denmark - Norway -
Scotland - Iceland | 11 | Reykjavik - Gothenburg |
| 3 | Iceland - Great Britain | 12 | Gothenburg - Reykjavik |
| 4 | Great Britain - Iceland | 13 | Reykjavik - Stockholm |
| 5 | Reykjavik - Copenhagen | 14 | Stockholm - Reykjavik |
| 6 | Copenhagen - Reykjavik | 15 | Reykjavik - Helsinki |
| 7 | Reykjavik - Oslo | 16 | Helsinki - Reykjavik |
| 8 | Oslo - Reykjavik | 17 | Scotland - Scandinavia |
| 9 | Reykjavik - Hamburg | 18 | Scandinavia - Scotland |

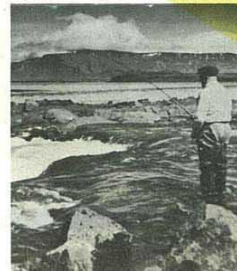
TOURIST CLASS FARES AND FREIGHT RATES

From To	Currency	Passenger Fares & Exc. Bag.			Freight Rates			Routing
		Local Currency		Exc. Bag. per kg.	Local Currency			
		→	←		Unier 45 kgs.	45 kgs. and over	Min. Charge	
AMSTERDAM Reykjavik	DFL	407.00	733.00	4.98	5.28	2.46	16.40	AMS/CPH/REK-AMS/LON/REK
BERLIN Reykjavik	DMK	529.00	953.00	6.62	4.87	3.66	21.00	BER/HAM/CPH/REK-BER/HAM/LON/REK
BRUSSELS Reykjavik	BFR	5090.00	9165.00	63.70	45.20	32.40	216.00	BRU/LON/REK
COLOGNE Reykjavik	DMK	465.00	837.00	5.81	4.07	3.06	20.35	CGN/LON/REK-CGN/HAM/CPH/REK
COPENHAGEN Glasgow	DKR	427.00	769.00	5.60	5.60	2.70	18.00	DIR.
Hamburg	-	165.00	297.00	2.20	1.40	1.05	7.00	DIR.
Oslo	-	190.00	342.00	1.90	1.65	1.25	8.25	DIR. CPH/GOT/OSL
Reykjavik	-	679.00	1223.00	8.50	5.70	4.30	28.50	CPH/GOT/OSL/REK-CPH/GLA/REK
DÜSSELDORF Reykjavik	DMK	465.00	837.00	5.81	4.07	3.06	20.35	DUS/LON/REK-DUS/HAM/CPH/REK
FRANKFURT Reykjavik	DMK	503.00	906.00	6.29	4.41	3.31	21.00	FRA/HAM/CPH/REK-FRA/LON/REK
GENEVE Reykjavik	SFR	554.00	998.00	6.95	4.95	3.75	21.80	GVA/PAR/LON/REK-GVA/BRU/LON/REK
GLASGOW Copenhagen	UKE	22-0-0	39-12-0	5/10	3/9	2/10	18/5	DIR.
Gothenburg	-	24-1-0	43-6-0	6/4	3/11	3/0	19/7	GLA/CPH/GOT
Helsinki	-	40-18-0	73-13-0	9/8	3/9	5/1	33/9	GLA/CPH/STO HEL
Stockholm	-	31-16-0	57-5-0	8/0	3/4	4/0	26/8	GLA/CPH/STO
Reykjavik	-	25-0-0	45-0-0	6/3	3/9	2/10	18/9	DIR.
GOTHENBURG Glasgow	SKR	349.00	629.00	4.60	2.85	2.15	14.25	GOT/CPH/GLA
Reykjavik	SKR	508.00	915.00	6.35	4.85	3.65	24.25	GOT/OSL/REK-GOT/CPH/REK
HAMBURG Copenhagen	DMK	100.00	180.00	1.31	0.84	0.63	4.20	DIR.
Oslo	-	216.00	389.00	2.46	1.21	1.21	8.05	HAM/CPH/GOT/OSL
Reykjavik	-	465.00	837.00	5.81	4.24	3.18	21.00	HAM/CPH/REK-HAM/GLA/REK
HELSINKI Glasgow	FMK	37.800	68.050	447	219	165	1095	HEL/STO/CPH/GLA
Reykjavik	-	49.850	89.750	547	286	215	1155	HEL/STO/OSL/REK-HEL/STO/CPH/REK
LONDON Reykjavik	UKE	31-11-0	56-16-0	7/11	5/0	3/9	25/0	LON/GLA/REK
OSLO Copenhagen	NKR	196.00	353.00	2.00	1.70	1.30	8.50	OSL/GOT/CPH
Hamburg	-	366.00	659.00	4.20	2.75	2.10	13.75	OSL/GOT/CPH/HAM
Reykjavik	L	643.00	1158.00	8.05	6-45	4.85	32.25	DIR.
Stockholm	C	700.00	1260.00	8.05	9-45	4.85	32.25	DIR.
PARIS Reykjavik	FFR	37600	67680	470	311	234	1555	PAR/LON/GLA/REK
REYKJAVIK Amsterdam	IKR	1746.00	3143.00	21.40	14.10	10.60	70.50	REK/LON/AMS-REK/CPH/AMS
Berlin	-	2055.00	3699.00	25.75	13.95	14.25	81.60	REK/CPH/HAM/BER-REK/LON/HAM/BER
Brussels	-	1662.00	2992.00	20.80	14.10	10.60	70.50	REK/LON/BRU
Cologne	-	1805.00	3249.00	22.60	13.80	11.85	79.00	REK/LON/CGN-REK/CPH/HAM/CGN
Copenhagen	-	1600.00	2880.00	20.00	13.40	10.65	67.00	REK/OSL/GOT/CPH-REK/GLA/CPH
Düsseldorf	-	1805.00	3249.00	22.60	13.80	11.85	79.00	REK/LON/DUS-REK/CPH/HAM/DUS
Frankfurt	-	1954.00	3518.00	24.45	17.15	12.90	81.60	REK/LON/FRA-REK/CPH/HAM/FRA
Geneve	-	2070.00	3726.00	25.90	18.50	13.90	81.60	REK/LON/PAR/GVA-REK/LON/BRU/GVA
Glasgow	-	1143.00	2058.00	14.30	8.60	6.45	43.00	DIR.
Gothenburg	-	1600.00	2880.00	20.00	15.30	11.50	76.50	REK/OSL/GOT-REK/CPH/GOT
Hamburg	-	1805.00	3249.00	22.60	16.45	12.35	81.60	REK/CPH/HAM-REK/GLA/HAM
Helsinki	-	2463.00	4434.00	27.05	20.20	15.15	81.60	REK/OSL/STO/HEL-REK/CPH/STO/HEL
London	-	1442.00	2596.00	18.05	11.45	8.60	57.25	REK/GLA/LON
Oslo	-	1470.00	2646.00	18.40	14.75	11.10	73.75	DIR.
Oslo C	-	1600.00	2880.00	18.40	14.75	11.10	73.75	DIR.
Paris	-	1751.00	3152.00	21.90	14.50	10.90	72.50	REK/LON/PAR
Stockholm	L	1917.00	3451.00	22.85	16.20	12.15	81.00	REK/OSL/STO-REK/CPH/STO
Stockholm	C	2048.00	3687.00	22.85	16.20	12.15	81.00	REK/OSL/STO-REK/CPH/STO
Stuttgart	-	2080.00	3744.00	26.00	17.80	13.35	81.60	REK/LON/STR-REK/CPH/HAM/STR
Zürich	-	2195.00	3789.00	26.35	18.50	13.90	81.60	REK/LON/STR
STOCKHOLM Glasgow	SKR	462.00	832.00	5.75	3.90	2.95	19.50	STO/CPH/GLA
Reykjavik	L	609.00	1097.00	7.25	5.15	3.90	25.75	STO/OSL/REK-STO/CPH/REK
Reykjavik	C	650.00	1170.00	7.25	5.15	3.90	25.75	STO/OSL/REK-STO/CPH/REK
STUTT GART Reykjavik	DMK	536.00	965.00	6.70	4.57	3.43	21.00	STR/LON/REK-STR/HAM/CPH/REK
ZURICH Reykjavik	SFR	563.00	1014.00	7.05	4.95	3.75	21.80	ZRH/LON/REK

L) = "Local selling fare" C) = "Construction fare"

ICELAND GERMANY DENMARK NORWAY SCOTLAND

- ① -- MONDAYS
- ② -- TUESDAYS
- ③ -- WEDNESDAYS
- ④ -- THURSDAYS
- ⑤ -- FRIDAYS
- ⑥ -- SATURDAYS
- ⑦ -- SUNDAYS



ICELANDAIR VISCOUNT		FI 210	FI 210	FI 220	FI 230	FI 230
Frequency		③	①	⑥	⑤⑥	②⑦
Valid from		1/6	25/6	1/6	1/6	25/6
Reykjavik	Dep	08.00	08.00	09.00	08.00	08.00
Glasgow	Arr				12.00	12.00
Glasgow	Dep				12.30	12.30
Oslo	Arr	13.00	13.00			
Oslo	Dep	13.20	13.20			
Copenhagen	Arr	14.45	14.45	14.45	15.00	15.00
					Metrop. daily	Metrop. daily
					SK 643	SK 643
Copenhagen	Dep	15.15	15.15	15.15	15.40	15.40
Hamburg	Arr	16.10	16.10	16.10	16.40	16.40

CONNECTING SERVICES		Metrop. daily	Metrop. daily		
Hamburg	Dep	13.20	13.20		
Copenhagen	Arr	14.25	14.25		
ICELANDAIR VISCOUNT		FI 231	FI 231	FI 221	FI 211
Frequency		⑤⑥	②⑦	⑦	④
Valid from		1/6	25/6	1/6	1/6
Hamburg	Dep			09.45	09.45
Copenhagen	Arr			10.40	10.40
Copenhagen	Dep	17.00	17.00	11.30	11.30
Oslo	Arr			12.55	12.55
Oslo	Dep			13.30	13.30
Glasgow	Arr	19.50	19.50		
Glasgow	Dep	20.30	20.30		
Reykjavik	Arr	22.50	22.50	15.40	17.00
					23.55

Iceland - a paradise for anglers



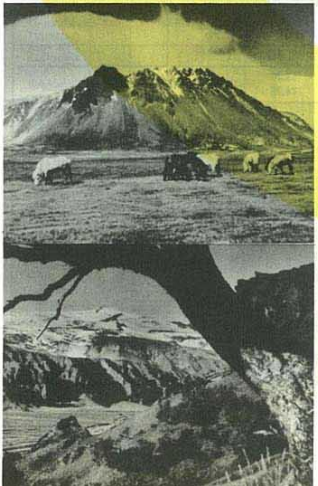


3		Iceland-Great Britain				
ICELANDAIR VISCOUNT		FI 230	FI 230	FI 230	FI 200	FI 202
Frequency		5 3	2	7	1	4
Valid from		1/6	25/6	25/6	1/6	1/6
Reykjavik	Dep	08.00	08.00	08.00	09.30	08.00
Glasgow	Arr	12.00	12.00	12.00		
London	Arr				14.45	13.15
CONNECTING SERVICES		VISC. wkdys	VISC. wkdys	VISC. daily		
		BE 905	BE 905	BE 907		
Glasgow	Dep	12.50	12.50	15.30		
London	Arr	14.25	14.25	17.05		



A majestic roar

GREAT BRITAIN



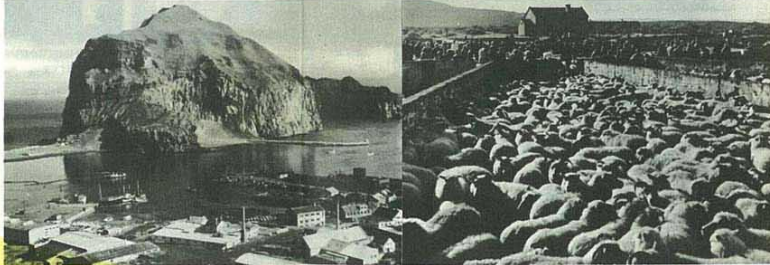
Untouched, peaceful nature - beauty without limits



4		Great Britain-Iceland		
CONNECTING SERVICES			VISC. daily	VISC. daily
			BE 908	BE 908
London	Dep	18.05	18.05	18.05
Glasgow	Arr	19.45	19.45	19.45
ICELANDAIR VISCOUNT		FI 201	FI 231	FI 231
Frequency		1 3	2 7	3 3
Valid from		1/6	25/6	1/6
London	Dep	17.20		
Glasgow	Dep		20.30	20.30
Reykjavik	Arr	20.55	22.50	22.50

COPENHAGEN

A solitary majesty - and thousands of Iceland's most important animals



5		Reykjavik-Copenhagen				
ICELANDAIR VISCOUNT		FI 210	FI 210	FI 220	FI 230	FI 230
Frequency		1	3	3	3 3	2 7
Valid from		25/6	1/6	1/6	1/6	25/6
Reykjavik	Dep	08.00	08.00	09.00	08.00	08.00
Copenhagen	Arr	14.45	14.45	14.45	15.00	15.00

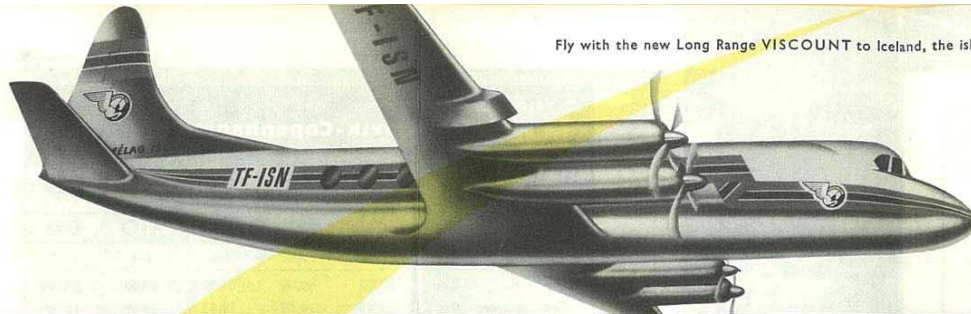
FI 210 via Oslo FI 220 direct service FI 230 via Glasgow

6		Copenhagen-Reykjavik				
ICELANDAIR VISCOUNT		FI 231	FI 231	FI 221	FI 211	FI 213
Frequency		3 3	2 7	7	3	1
Valid from		1/6	25/6	1/6	1/6	25/6
Copenhagen	Dep	17.00	17.00	11.30	11.30	18.25
Reykjavik	Arr	22.50	22.50	15.40	17.00	23.55

FI 231 via Glasgow FI 221 direct service FI 211 & 213 via Oslo



Fly with the new Long Range VISCOUNT to Iceland, the island of the sagas



GOTHENBURG

ICELANDAIR FLIES VISCOUNT

OSLO

7 Reykjavik-Oslo		
ICELANDAIR VISCOUNT	FI 210	FI 210
Frequency	3	1
Valid from	1/6	25/6
Reykjavik Dep	08.00	08.00
Oslo Arr	13.00	13.00

8 Oslo-Reykjavik		
ICELANDAIR VISCOUNT	FI 211	FI 213
Frequency	3	1
Valid from	1/6	25/6
Oslo Dep	13.30	20.15
Reykjavik Arr	17.00	23.55

HAMBURG



9 Reykjavik-Hamburg					
ICELANDAIR VISCOUNT	FI 210	FI 220	FI 210	FI 230	FI 230
Frequency	3	3	1	3 3	2 7
Valid from	1/6	1/6	25/6	1/6	25/6
Reykjavik Dep	08.00	09.00	08.00	08.00	08.00
Copenhagen Arr				15.00	15.00
Hamburg Arr	16.10	16.10	16.10		
CONNECTING SERVICES				Metrop. daily SK 643	Metrop. daily SK 643
Copenhagen Hamburg				15.40 16.40	15.40 16.40

FI 210 via Oslo and Copenhagen FI 220 via Copenhagen FI 230 via Glasgow

10 Hamburg-Reykjavik					
CONNECTING SERVICES				Metrop. daily SK 642	Metrop. daily SK 642
Hamburg Copenhagen	Dep			13.20	13.20
	Arr			14.25	14.25
ICELANDAIR VISCOUNT	FI 211	FI 221	FI 213	FI 231	FI 231
Frequency	3	7	1	3 3	2 7
Valid from	1/6	1/6	25/6	1/6	25/6
Hamburg Dep	09.45	09.45	17.00		
Copenhagen Dep				17.00	17.00
Reykjavik Arr	17.00	15.40	23.55	22.50	22.50

FI 211 and FI 213 via Copenhagen and Oslo FI 221 via Copenhagen FI 231 via Glasgow

11 Reykjavik-Gothenburg					
ICELANDAIR VISCOUNT	FI 210	FI 210	FI 220	FI 230	FI 230
Frequency	1	3	3	3 3	2 7
Valid from	25/6	1/6	1/6	1/6	25/6
Reykjavik Dep	08.00	08.00	09.00	08.00	08.00
Oslo Arr	13.00	13.00			
Copenhagen Arr			14.45	15.00	15.00
CONNECTING SERVICES	Metrop. daily SK 455	Metrop. daily SK 455	Metrop. daily SK 656	Metrop. daily SK 656	Metrop. daily SK 656
Oslo Copenhagen Gothenburg	Dep 17.50	Dep 17.50	Dep 20.35	Dep 20.35	Dep 20.35
	Arr 18.45	Arr 18.45	Arr 21.30	Arr 21.30	Arr 21.30

FI 230 via Glasgow FI 220 direct service

12 Gothenburg-Reykjavik					
CONNECTING SERVICES	Metrop. daily SK 643	Metrop. daily SK 643	Metrop. daily SK 651	Metrop. daily SK 454	Metrop. daily SK 642
Gothenburg Copenhagen Oslo	Dep 14.15	Dep 15.10	Dep 14.15	Dep 08.55	Dep 11.25
	Arr 15.10	Arr 15.10	Arr 09.50	Arr 12.20	Arr 17.05
ICELANDAIR VISCOUNT	FI 231	FI 231	FI 221	FI 211	FI 213
Frequency	3 3	2 7	7	3	1
Valid from	1/6	25/6	1/6	1/6	25/6
Copenhagen Dep	17.00	17.00	11.30		
Oslo Dep				13.30	20.15
Reykjavik Arr	22.50	22.50	15.40	17.00	23.55

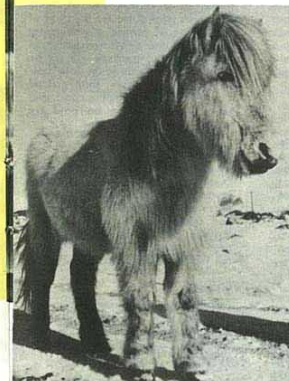
FI 231 via Glasgow FI 221 direct service

AGENCIES AND BOOKING OFFICES

HELSINKI



City	Booking Office Addresses	Telephone	Telegrams	Bus Dep. Station	Check-in times Minutes before departure	
					Bus	Airport
COPENHAGEN	ICELANDAIR Vesterbrogade 6 C SAS Dagmarhus	Minerva 3388 Central 8800	FLUGFELAG COPENHAGEN SASYSYSTEM COPENHAGEN	SAS Dagmarhus	75	45
GLASGOW	ICELANDAIR 145 St. Vincent Street BEA, 122 St. Vincent Street	CITY 3638/9 CITY 7055	ICEAIR GLASGOW BEALINE GLASGOW	BEA St. Enoch's Square	60	30
HAMBURG	ICELANDAIR Hamburg Airport Deutsche Lufthansa Alsterter 14-16	591001 EXT. 202 & 205 331776	ICEAIR HAMBURG LUFTHANSA HAMBURG	LUFTHANSA Alsterter Hotel Reichshof	80 70	30
LONDON	ICELANDAIR 161 Piccadilly, W. 1 BEA, Dorland Hall Lower Regent Street	Hyde Park 7641 GERard 9833	ICEAIR LONDON BEALINE LONDON	BEA Waterloo Air Terminal	110	40
OSLO	ICELANDAIR Carl Adlersgate 38 SAS Tordenskjoldsgate	415486 429874	ICEAIR OSLO SASYSYSTEM OSLO	SAS Torden- skjoldsgate	65	30
REYKJAVIK	Flugfélag Islands H. F. Lækjargata 4	6600	ICEAIRBOOK REYKJAVIK	Not provided		45



Faithful, hardy and tough - »Faxi«, from the morning of time the symbol of safe transport

13 Reykjavik-Stockholm

ICELANDAIR VISCOUNT	FI 230	FI 230	FI 220	FI 210	FI 210
Frequency	5 3	2 7	3	3	1
Valid from	1/6	25/6	1/6	1/6	25/6
Reykjavik Dep	08.00	08.00	09.00	08.00	08.00
Copenhagen Arr	15.00	15.00	14.45	14.45	14.45
CONNECTING SERVICES	Conv./ DC-6 daily	Conv./ DC-6 daily	Conv./ DC-6 daily	Conv./ DC-6 daily	Conv./ DC-6 daily
	KL/SN 171	KL/SN 171	KL/SN 171	KL/SN 171	KL/SN 171
Copenhagen Dep	17.00	17.00	17.00	17.00	17.00
Stockholm Arr	18.40	18.40	18.40	18.40	18.40

FI 230 via Glasgow FI 210 via Oslo FI 220 direct service

STOCKHOLM



14 Stockholm-Reykjavik

CONNECTING SERVICES	DC-6 daily	DC-6 daily	DC-6 daily	DC-6 daily	DC-6 daily
	SK 551	SK 551	SK 565	SK 565	SK 551
Stockholm Dep	13.55	13.55	08.30	08.30	13.55
Copenhagen Arr	15.35	15.35	10.10	10.10	15.35
ICELANDAIR VISCOUNT	FI 231	FI 231	FI 221	FI 211	FI 213
Frequency	3 3	2 7	7	3	1
Valid from	1/6	25/6	1/6	1/6	25/6
Copenhagen Dep	17.00	17.00	11.30	11.30	18.25
Reykjavik Arr	22.50	22.50	15.40	17.00	23.55

FI 231 via Glasgow FI 211 via Oslo FI 213 via Oslo FI 221 direct service

Enterprising advances have set their mark on the agriculture of Iceland

15 Reykjavik-Helsinki

ICELANDAIR VISCOUNT	FI 230	FI 230	FI 220	FI 210	FI 210
Frequency	5 3	2 7	3	3	1
Valid from	1/6	25/6	1/6	1/6	25/6
Reykjavik Dep	08.00	08.00	09.00	08.00	08.00
Copenhagen Arr	15.00	15.00	14.45	14.45	14.45
CONNECTING SERVICES	Conv./ DC-6 daily	Conv./ DC-6 daily	Conv./ DC-6 daily	Conv./ DC-6 daily	Conv./ DC-6 daily
	KL/SN 171	KL/SN 171	KL/SN 171	KL/SN 171	KL/SN 171
Copenhagen Dep	17.00	17.00	17.00	17.00	17.00
Stockholm Arr	18.40	18.40	18.40	18.40	18.40
CONNECTING SERVICES	Metrop. daily	Metrop. daily	Metrop. daily	Metrop. daily	Metrop. daily
	AY 784	AY 784	AY 784	AY 784	AY 784
Stockholm Dep	20.10	20.10	20.10	20.10	20.10
Helsinki Arr	22.35	22.35	22.35	22.35	22.35

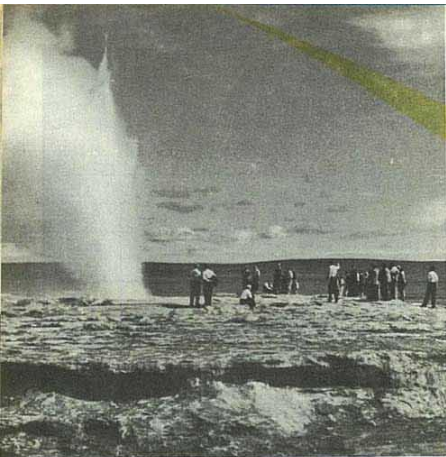
FI 230 via Glasgow FI 210 via Oslo FI 220 direct service

16 Helsinki-Reykjavik

CONNECTING SERVICES	Metrop. daily	Metrop. daily	DC - 6 daily	DC - 6 daily	Metrop. daily
	AY 801	AY 801	SK 741	SK 741	AY 801
Helsinki Dep	12.00	12.00	07.35	07.35	12.00
Copenhagen Arr	13.55	13.55	09.10	09.10	13.55
ICELANDAIR VISCOUNT	FI 231	FI 231	FI 221	FI 211	FI 213
Frequency	5 3	2 7	7	3	1
Valid from	1/6	25/6	1/6	1/6	25/6
Copenhagen Dep	17.00	17.00	11.30	11.30	18.25
Reykjavik Arr	22.50	22.50	15.40	17.00	23.55

FI 231 via Glasgow FI 211 via Oslo FI 213 via Oslo FI 221 direct service





The famous Geysir will spring for you too...

PASSENGERS

Conditions of carriage:

All carriage is subject to Icelandair's "General Conditions of Carriage of Passengers and Baggage", to the conditions of contract in the passengers ticket and to Icelandair's instructions and rules. The full text of the General Conditions of Carriage is at passengers' disposal at any Icelandair office.

Schedules:

All times stated in this timetable are actual local times at the place in question. The times are subject to alteration without prior notice. Passengers are therefore requested to check the times when making reservation. Icelandair endeavours to operate all their services with the maximum of regularity. No responsibility, however, can be accepted for any delay or cancellation of flight nor for missed connections.

Fares:

Fares and rates published in this timetable are subject to change without prior notice.

Departures:

Prior to departure from respective cities, passengers are requested to check in at offices and at hours stated on page 8 for the purpose of completion of certain governmental procedures and coach transportation to the airport. Departure will not be delayed to accommodate late passengers. Please note that ground transportation between airport and town terminals is to be paid for by the passengers.

Stop-overs:

Stop-overs are granted at scheduled stopping places on through journeys provided the passenger purchases the entire through tickets and specifies at the time of booking the point(s) at which a stop-over is required. The validity of the ticket should be complied with.

Insurance:

Airline passengers may obtain personal as well as baggage insurance at reasonable rates. Full details can be obtained at all Icelandair offices and travel agencies.

INFORMATION

Reservations:

Requests for reservations should be made well in advance, either through an Icelandair ticket office or any authorized agent. Make onward and return reservations at the same time. At destination, transfer or stop-over point(s) you are requested to confirm your return or onward reservations.

Return tickets:

A discount of 10% of the total fare is granted on the purchase of return tickets. The discount is included in the published return fares.

Children's fares:

- Infants under two years of age and not occupying individual seats are charged 10% of the adult fare, provided each infant is accompanied by an adult.
- 50% of the adult fare is charged for children:
 - Between 2 and 12 years of age.
 - Infants under 2 years occupying individual seats, and infants in excess of the one accompanied by a passenger paying the adult fare.

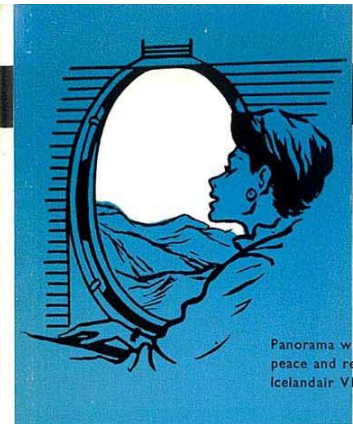
The age limit shall be taken as from the date of commencement of the outward journey. Children under eight years should be accompanied by an adult unless special arrangements have been made in advance.

Student fares:

Special reduced fares are available for students over 12 and under 26 years of age attending a full time course for a schoolyear at an educational establishment when travelling from/to their country of residence or their parents' residence in another country to/from the educational establishment abroad and return. Further details are obtainable at authorised travel agencies and at Icelandair offices.

Baggage allowance:

Any passenger, except children paying 10% of the full fare, is entitled to a free baggage allowance of 20 or 30 kgs, according to the class of service to be used. Baggage includes all luggage i. e. typewriters, night-bags, briefcases etc., whether carried in the cabin



Panorama windows - peace and rest - it's the Icelandair VISCOUNT!

or in the cargo compartment. Checked baggage is not available during flight. All baggage, including baggage carried in the cabin is to be marked with the passenger's name and address. Please note that the weight of the baggage carried in the cabin must not exceed

five kgs. and is also included in the total weight. In addition to the free baggage allowance the passenger may carry free of charge the following personal objects: a ladies handbag or pocketbook; an overcoat or wrap; foot rug; an umbrella or walking stick; a pair of binoculars; a small camera; a reasonable amount of reading material for the flight; infants food for consumption en route and infant's carrying basket.

Icelandair will assume no responsibility for unregistered baggage.

Excess baggage:

Baggage in excess of the free baggage allowance may be forwarded:

- As excess baggage at a charge of 1% of the normal adult first class one-way fare per kg.
- As air cargo, either prior to or after the passenger's departure at ordinary cargo rates.

The carriage of baggage in excess of the free baggage allowance is subject to space being available.

Fountainpens and lighters:

Due to low pressure at high altitude, fountainpens are likely to leak, so when onboard take care to open your pen with the point up or better still ask the airhostess to open it for you. The lower pressure also affects cigarettelighters so ensure that yours is not newly filled.

Domestic services in Iceland

Please note that all scheduled air-services in Iceland are operated by ICELANDAIR. The main domestic services are operated with DC-4 (Skymaster) and DC-3 (Douglas Dakota) aircraft. Some important services are operated with "Catalinas". The following are the main routes operated by ICELANDAIR within Iceland during the peak-season:

Reykjavik-Akureyri v. v.: Operated 3 times a day except twice Sundays (DC-4 and DC-3).

Reykjavik-Egilsstadir v. v.: Operated daily except Sundays (DC-4 and DC-3).

Reykjavik-Isafjörður v. v.: Operated daily (Catalina).

Reykjavik-Vestmannaeyjar v. v.: Operated twice daily. Sundays and Mondays only one flight (DC-3).

All ICELANDAIR offices are pleased to give you further information on our domestic network.

17 Scotland-Scandinavia

ICELANDAIR VISCOUNT		FI 230			
Frequency		27		33	
Valid from		25/6		1/6	
Glasgow Dep		12.30			
Copenhagen Arr		15.00			
CONNECTING SERVICES		Metrop. daily	Metrop. daily	Conv./ DC-6 daily	Conv./ DC-6 daily
		SK 458	SK 656	KU/SN 171	KU/SN 171
Copenhagen	Dep	20.35	20.20	17.00	17.00
Gothenburg	Arr	21.30			
Oslo	Arr		21.55		
Stockholm	Arr			18.40	18.40
				Metrop. daily	
				AY 784	
Stockholm	Dep			20.10	
Helsinki	Arr			22.35	

18 Scandinavia-Scotland

CONNECTING SERVICES		Metrop. daily	DC-6 daily	Metrop. daily	Metrop. daily
		AY 801	SK 551	SK 643	SK 643
Helsinki	Dep	12.00			
Stockholm	Dep		13.55		
Oslo	Dep			13.00	
Gothenburg	Dep				14.15
Copenhagen	Arr	13.55	15.35	15.10	15.10

ICELANDAIR VISCOUNT		FI 231			
Frequency		27		33	
Valid from		25/6		1/6	
Copenhagen Dep		17.00			
Glasgow Arr		19.50			

SCANDINAVIA-SCOTLAND

