

PASSENGER SCHEDULES BETWEEN CHICAGO—DETROIT—TOLEDO—CLEVELAND

Subject to change without notice.

All times shown are standard times

EASTBOUND—READ DOWN				THE "AIR MAIL" ROUTE Daily		A.M. Times—Light Type P.M. Times—Heavy Type		WESTBOUND—READ UP					
STOUT DIVISION Daily Except Sunday				The "Air Mail" No. 2		The "N.A.T. Lid." No. 10		The "N.A.T. Lid." No. 9		The "Air Mail" No. 1		STOUT DIVISION Daily Except Sunday	
	The "Silver Arrow" No. 4	The "Air Mail" No. 6	The "Detroit Special" No. 8	The "Air Mail" No. 2	The "N.A.T. Lid." No. 10	W... CHICAGO.... W							
	9:50 C.T.	1:30 C.T.	3:00 C.T.	9:30 C.T.	3:35 C.T.			11:55 C.T.	7:00 C.T.	2:50 C.T.	4:50 C.T.	10:45 C.T.	
	A 10:40 C.T.	A 2:25 C.T.	A 3:50 C.T.	I R	I R	W... SOUTH BEND... W				A 1:45 C.T.	A 4:05 C.T.	A 10:00 C.T.	
	1:15 E.T.	5:00 E.T.	6:25 E.T.	E C	E C	W... DETROIT.... W				12:40 E.T.	3:10 E.T.	9:05 E.T.	
	The "Lake-view" No. 12	The "Shore-line" No. 14	The "Lake Erie Lid." No. 44	The "Sunset" No. 65	S R V	S R V				The "Lake-view" No. 3	The "Lake Erie Lid." No. 5	The "Shore-line" No. 11	The "Sunset" No. 13
10:30 E.T.	4:30 E.T.	1:30 E.T.	5:10 E.T.	I C	I C	W... DETROIT.... W				11:50 E.T.	2:50 E.T.	4:20 E.T.	6:30 E.T.
B	B	B	B	12:50 E.T.	8:45 E.T.	W... TOLEDO.... W				10:40 E.T.	5:45 E.T.	B	B
11:45 E.T.	5:45 E.T.	2:45 E.T.	8:25 E.T.	1:40 E.T.	7:50 E.T.	W... CLEVELAND... W				9:30 E.T.	4:35 E.T.	10:30 E.T.	1:30 E.T.
												3:00 E.T.	5:10 E.T.

A. Stops to discharge or pick up passengers, PROVIDING reservations are made 1/4 hour before plane arrives
B. No stops made on Stout Division. Lunches served on Plane Nos. 1, 2, 4, 10, 33.

RAIL CONNECTIONS

In addition to the all-air passenger schedules shown above, air-rail service between Chicago and New York and other Eastern points is available, as indicated in the following table:

Eastbound Read Down		Via DETROIT				Westbound Read Up	
No. 4	No. 2	N.A.T. Planes				No. 17	No. 7
3:00	1:30	Lv. Chicago	Ar. Detroit	Lv. Detroit	Ar. Cleveland	4:50	10:55
6:25	5:00	Ar. Detroit	Lv. Detroit	Lv. Detroit	Ar. Cleveland	3:10	9:05
"The Detroitian"	"Wolverine"	Michigan Central Trains				"No. 15"	"Wolverine"
7:40	5:55	Lv. Detroit	Ar. Detroit	Lv. Detroit	Ar. Cleveland	1:25	8:35
9:30	3:00	Ar. New York	Lv. New York	Ar. Boston	Lv. Boston	11:10	3:03
	10:45	Ar. Boston	Lv. Boston	Ar. Cleveland	Lv. Cleveland	6:10	3:15
		Via CLEVELAND					
	3:35	N.A.T. Planes					
	7:30	Lv. Chicago	Ar. Cleveland	Lv. Cleveland	Ar. Cleveland	11:55	9:30
P. R. R.	"Ohio St. Ltd."	TRAINS				N.Y.C. "Cleveland"	P. R. R.
"Red Arrow"	8:30	Lv. Cleveland	Ar. Cleveland	Lv. Cleveland	Ar. Cleveland	8:35	7:30
9:30	9:30	Ar. New York	Lv. New York	Ar. Philadelphia	Lv. Philadelphia	7:45	7:40
7:44		Ar. Philadelphia	Lv. Philadelphia	Ar. Washington	Lv. Washington	9:27	7:20
8:45		Ar. Washington	Lv. Washington				

Also connection at Cleveland, to and from Washington by B. & O. trains: Leaving Cleveland 8:45 P. M., Arriving Washington 8:45 A. M. Leaving Washington 7:35 P. M., Arriving Cleveland 8:10 A. M.

RAIL CONNECTIONS AT CHICAGO

For West

N.A.T. planes arriving at Chicago from Detroit, Cleveland and the east, make connections at Chicago with principal trains for western points. For complete details write or call nearest Traffic office.

Air Connections

N.A.T. planes make connections at Chicago with planes of other lines for principal western points. Also connections are made at Cleveland with other air lines at that point. Write or call for details.

SCHEDULE OF FARES BETWEEN

Chicago and Detroit	\$18.00
Chicago and Toledo	20.00
Chicago and Cleveland—via Detroit	28.00
Chicago and Cleveland—Direct	26.00
Chicago and South Bend	7.00
Detroit and Cleveland	10.00
Detroit and South Bend	12.00
Toledo and Cleveland	7.00
Cleveland and South Bend—Via Detroit	22.00
Air-rail fare between Chicago and New York via Cleveland	\$55.78
Other air-rail fares will be quoted on request.	

TRANSPORTATION TO THE AIRPORTS

Note: Tickets for this service may be purchased at same time air tickets are obtained.

IN CHICAGO
Company coach leaves City Ticket Office, 400 South Michigan Avenue, or Air Passenger Bureau, Room 21, Palmer House Arcade, 50 minutes before departure of plane.

IN DETROIT
Company coach leaves Consolidated Air Travel Ticket Office, 139 Bagley Avenue, 35 minutes before departure of plane.

IN TOLEDO

Arrangements are made with Yellow Cab Co. for transporting N.A.T. passengers to and from the airport.

IN CLEVELAND

Company coach leaves Consolidated Air Travel Ticket Office, 708 Superior Avenue, N. E., or Union Terminal Concourse, 40 minutes before departure of plane.

GENERAL INFORMATION

Baggage. 30 pounds will be carried free on each full fare ticket. Baggage carried in excess of 30 pounds free limit, but not exceeding a total of 50 pounds, will be charged for at 1/3 of 1% of the fare with a minimum of 5¢ per pound and no charge to be less than 25¢. Baggage weighing in excess of 50 pounds will be carried only by special arrangement made in advance.

Fares. There are no half-fares. Infants in arms may be carried free. All children occupying a seat must have a ticket.

Cancellations. If tickets are not purchased two hours in advance of plane departure, reservations are subject to sale. If cancellation is necessary after ticket has been purchased, such cancellation must be made two hours before departure of plane, otherwise no refund can be made of the amount paid.

TRAVEL BY

NAT

NATIONAL AIR TRANSPORT

Including Stout Air Lines

TRAVEL BY

NAT

NATIONAL AIR TRANSPORT

Including Stout Air Lines

CHICAGO—DETROIT—TOLEDO—CLEVELAND

Combined rail and air service to CHICAGO and West

CHICAGO—DETROIT—TOLEDO—CLEVELAND

Combined rail and air service to CHICAGO and West



Carriers of PASSENGERS U. S. MAIL and EXPRESS



Carriers of PASSENGERS U. S. MAIL and EXPRESS



"FLY WITH THE AIR MAIL"



"FLY WITH THE AIR MAIL"

PRINTED IN U.S.A.

Corrected to October 1, 1930

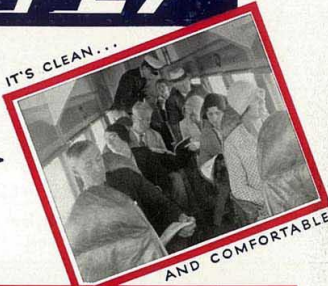
YOU SHOULD

FLY



IT SAVES TIME

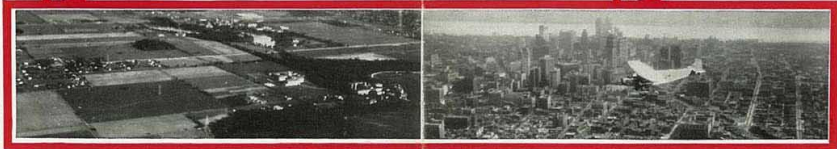
WITH



IT'S CLEAN...

AND COMFORTABLE

BECAUSE



IT'S INTERESTING

YOUR TRIP

Regardless of whether you are a seasoned air traveler or whether you are making your first trip over a scheduled air line, you will find in N.A.T.'s service a well balanced combination of comfort, speed and reliability.

The N.A.T. planes are made to suit your needs. You are flying for business or pleasure and each appointment of the great three-motored plane which carries you is designed for your every requirement. Two seasoned pilots are in control of your plane. The powerful motors which pull you through the air at 115 miles an hour convince you that you will arrive at your destination in the shortest possible time. The cushioned chairs and well appointed cabin are designed for your every comfort, so that you may enjoy a nap, read a magazine or view the panorama below with the maximum of ease and enjoyment.

Outside your window you will find many interesting views to hold your interest. On N.A.T. routes you are near one of the Great Lakes at some stage of your trip and many beautiful panoramas invite your attention.

The planes fly at an average height of 1,200 feet, from which altitude you find the earth a checkerboard of interest. The world becomes a new place to you and the activities of your earthbound fellow mortals will be an ever present source of interest. Flying at this height gives a pleasant sensation of detachment from the things of earth and you may well imagine yourself in a little world of your own, composed of yourself and your traveling companions, set aside for a time to dwell in the wonderment of this new means of travel.

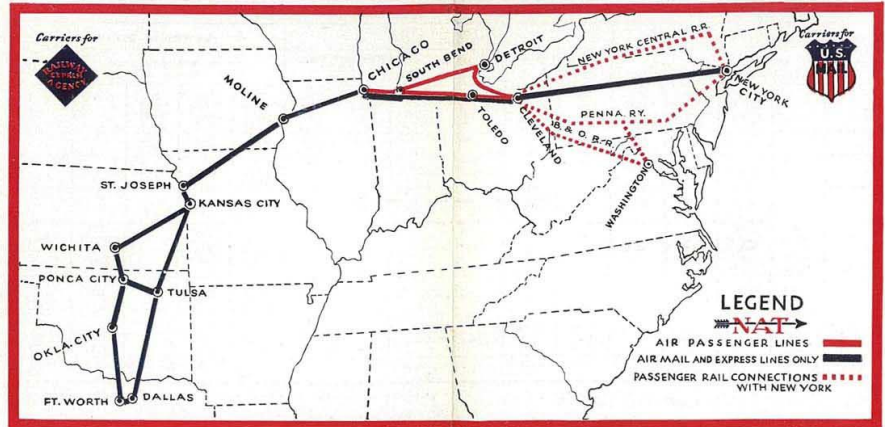
As you near the airport of your destination, and the plane glides to a smooth landing, you will say to yourself, "I have had a wonderful experience. This surely is the way to travel." While you are saying that, realize that every day over the nation's air lines thousands of persons like yourself are saying that very thing.

NATIONAL AIR TRANSPORT, Inc.

(Division of United Aircraft and Transport Corporation)



TRAVEL WITH **NAT**



N.A.T. AIR PASSENGER, MAIL & EXPRESS LINES

NATIONAL AIR TRANSPORT, Inc.

National Air Transport, Inc., one of the pioneer air transport operators of the United States, was organized in May 1925. It began active operations May 12, 1926, carrying air mail between Chicago, Kansas City and Dallas. Later it was awarded the contract to carry mail between Chicago, Cleveland and New York and at the same time started the transportation of air express under contract with the Railway Express Agency. In its four and one-half years of operation, N. A. T. planes have flown 8,500,000 miles and have carried 5,200,000 pounds of mail and express.

As its first step in passenger transportation by airplane, N. A. T. has acquired the Stout Air Lines, which have been operating an exclusive passenger service for over four years between Chicago, Detroit and Cleveland. During these four years of operation, Stout Air Lines have flown 1,350,000 miles and have carried 130,000 passengers without injury to a single one. The same pilots who achieved this record will fly passenger planes on the Stout Division of N. A. T.

Coincident with the acquisition of the Stout Air Lines, National Air Transport also begins passenger operations over the eastern division of its lines between Chicago, Toledo and Cleveland, offering all-air service between these points and through air-rail service between Chicago and New York and other eastern points through rail connections at Cleveland. Including the recently acquired Stout Air Lines, National Air Transport planes fly approximately 12,000 miles daily, including both the passenger and mail and express operations.

Based on the firm foundation of the experience of Stout Air Lines in the transportation of passengers, and its own four and one-half year record of carrying air mail and express, National Air Transport now offers an air passenger service which it intends to make second to none in value to the public.

All inquiries will be given personal attention. Call or write nearest office listed below:

N. A. T. GENERAL OFFICE

5936 South Cicero Ave.,
CHICAGO, ILLINOIS
 Traffic Office—400 South Michigan Ave.
 Tel. Wabash 0230
 Ticket Office—Air Passenger Bureau
 21 Palmer House Arcade
 Tel. Sore 7111
 Night Tel. Hemlock 8800
CLEVELAND, OHIO
 Traffic Office—Cleveland Airport
 Tel. Clearwater 5176
 Ticket Office—708 Superior Avenue
 Tel. Cherry 0400

DETROIT, MICHIGAN
 Traffic Office—Ford Airport
 Dearborn, Michigan
 Tel. Dearborn 1470
 Ticket Office—139 Bagley Avenue
 Tel. Cadillac 9220

TOLEDO, OHIO
 Traffic Office—Toledo Airport
 Tel. Lenox 43-A-1
 Ticket Office—American Air Transport
 Commodore Perry Hotel
 Tel. Main 1824

CHICAGO, ILLINOIS

KANSAS CITY, MISSOURI
 Traffic Office—1028 Baltimore Avenue
 Tel. Main 6688

NEW YORK CITY, N. Y.
 Traffic Office—420 Lexington Avenue
 Tel. Lexington 8044
 Ticket Office—Hotel Roosevelt
 Tel. Vanderbilt 6352

DALLAS, TEXAS
 Traffic Office—Chamber of Commerce Bldg.,
 Tel. 2-5455

Air-rail tickets available at New York Central R. R. ticket offices.
 Air tickets may also be purchased at all leading hotels and travel bureaus.

