

WESTERN AIR LINES FARES

JULY 1, 1941

WESTERN AIR LINES



July 1, 1941	Butte	Cut Bank	Great Falls	Helena	Idaho Falls	Las Vegas	Lethbridge	Long Beach	Burbank	Los Angeles	Pocatello	Salt Lake	San Diego	West Yellowstone														
Butte...		\$10 36 \$ 7 00	\$ 4 00	\$10 40	\$40 30	\$14 59	\$57 15	\$54 20	\$13 05	\$19 45	\$80 20	\$ 7 50	\$18 65	\$12 60	\$ 7 20	\$18 70	\$12 60	\$10 40	\$40 30	\$14 59	\$57 15	\$54 20	\$13 05	\$19 45	\$80 20	\$ 7 50		
Cut Bank	\$10 36		3 36	8 46	19 21	50 06	4 23	66 91	63 96	21 61	29 21	69 96	16 36	18 65	7 00	6 05	15 23	34 58	190 11	7 61	120 44	115 13	38 90	52 88	125 93	129 45		
Great Falls	7 00	3 36			5 10	15 85	46 70	7 59	63 55	60 60	18 25	25 85	66 60	13 00	12 60	6 05	9 20	28 60	184 00	13 66	114 30	109 100	32 85	46 50	119 180	123 40		
Helena	4 00	8 46	5 10		13 15	42 80	12 69	59 65	56 70	15 80	21 95	62 70	9 50	7 20	15 23	9 20				23 70	177 00	22 84	107 30	102 100	28 45	39 60	112 80	117 10
Idaho Falls	10 40	19 21	15 85	13 15		31 85	23 44	48 70	45 75	3 50	11 00	51 75	6 00	18 70	34 58	128 50	123 70			157 30	142 19	187 60	182 30	6 30	119 80	193 10	110 70	
Las Vegas	40 30	50 06	46 70	42 80	31 85			54 29	16 85	13 90	29 20	20 85	19 90	36 85	172 50	190 11	184 00	177 00	157 30			197 72	25 30	120 00	52 50	37 60	130 80	166 00
Lethbridge	14 59	4 23	7 59	12 69	23 44	54 29			71 14	68 19	25 84	33 44	74 10	20 59	128 28	7 61	113 66	122 84	142 19	197 72			128 105	122 174	146 51	160 19	133 154	137 06
Long Beach	57 15	66 91	63 55	59 65	48 70	16 85	71 14		2 95	46 05	37 70	4 95	53 70	102 180	120 44	114 30	107 30	187 60	130 30	128 105			5 30	82 80	167 80	8 90	96 30	
Los Angeles	54 20	63 96	60 60	56 70	45 75	13 90	68 19	2 95		43 10	34 75	6 00	50 75	197 50	115 13	109 100	102 100	182 30	128 50	122 174	5 30		177 50	162 50	110 80	191 00		
Pocatello	13 05	21 61	18 25	15 80	3 50	29 20	25 84	46 05	43 10			8 35	49 10	23 50	38 90	32 85	28 45	6 30	152 50	146 51	182 80	177 50		115 00	188 30	114 40		
Salt Lake	19 45	29 21	25 85	21 95	11 00	20 85	33 44	37 70	34 75	8 35			40 75	35 00	152 58	146 50	139 50	119 80	137 50	160 19	167 80	162 50	15 00		173 30	128 50		
San Diego	60 20	69 96	66 60	62 70	51 75	19 90	74 19	4 95	6 00	49 10	40 75		56 75	108 30	125 93	119 80	112 80	193 10	134 00	133 154	8 90	9 00	188 30	173 30			101 80	

FARE EXPLANATIONS:
TICKET AGENTS ATTENTION—Ticketing Divisions exist at Salt Lake and Los Angeles.
TARIFF REFERENCES—Please consult Local and Joint Passenger Tariff Routines 1518 and 1519 for detailed explanation on application of special air fares and regular air fares.
 *—Passengers from Chicago and points East may visit Los Angeles with stopover at no increase over regular San Francisco fares on either Eastbound or Westbound trips.
 x—Via Salt Lake City.
SPECIAL AIR FARES—NATIONAL PARKS ALL-EXPENSE TOURS—These special fares will be available permanently for all intraline or interline passengers holding All-Expense tour orders to any one or combination of the following National Parks: Jasper, Banff, Glacier, Yellowstone, Las Vegas Recreational Area, Death Valley.

SPECIAL NATIONAL PARKS AIR FARES

ROUND TRIP FARES	Airline Terminal	Butte	Great Falls	Helena	Idaho Falls	Long Beach	Los Angeles	Pocatello	Salt Lake	San Diego
Glacier, Banff, Jasper	Cut Bank	15 54	5 04	12 69	28 81	100 37	95 94	32 41	43 81	104 94
Death Valley, Boulder Dam, Grand Canyon	Las Vegas	60 46	70 06	64 20	47 78	24 42	20 00	43 80	31 28	29 00
Banff, Lake Louise, Jasper	Lethbridge	21 89	11 39	19 04	35 16	106 71	102 29	38 76	50 16	111 29
Yellowstone, Grand Tetons	West Yellowstone	11 26	19 80	14 26	9 00	80 54	76 12	12 00	24 00	85 12

TICKET OFFICES

Butte, Montana: Finlen Hotel Lobby, Tel. 7222; Airport Tel. 6555
 Cut Bank, Montana: Hy Miller Hotel, Tel. 381; Cut Bank Hotel Tel. 377
 Great Falls, Montana: Rainbow Hotel, Tel. 5404; Airport Tel. 4271
 Helena, Montana: Chamber of Commerce, 6th & Fuller Sts., Tel. 210; Airport Tel. 688
 Hollywood, Calif.: 1634 Vine Street TRinity 4771
 Idaho Falls, Idaho: 344 Park Ave., Tel. 1242; Airport Tel. 1124
 Las Vegas, Nevada: McCarran Field Tel. 800
 Lethbridge, Alberta: Marquis Hotel, Tel. 3971; Kenyon Field (TCA) Tel. 2830
 Long Beach, Calif.: 116 W. Ocean Blvd., Tel. 61421; Nights Tel. 44446
 Los Angeles, Calif.: City Ticket Office, 508 W. 6th St. T Ucker 1551
 Pocatello, Idaho: Bannock Hotel, Tel. 434; Airport Tel. 2206
 Salt Lake City, Utah: Hotel Utah, Tel. 4-6494; Reservations Tel. 5-2838
 San Diego, Calif.: U. S. Grant Hotel, Franklin 6383; Reservations Woodcrest 3122
 Santa Barbara, Calif.: City Ticket Office, 20 La Arcada Bldg. Tel. 7800



Priscilla Lane, Warner Bros. star, is a real dude ranch fan

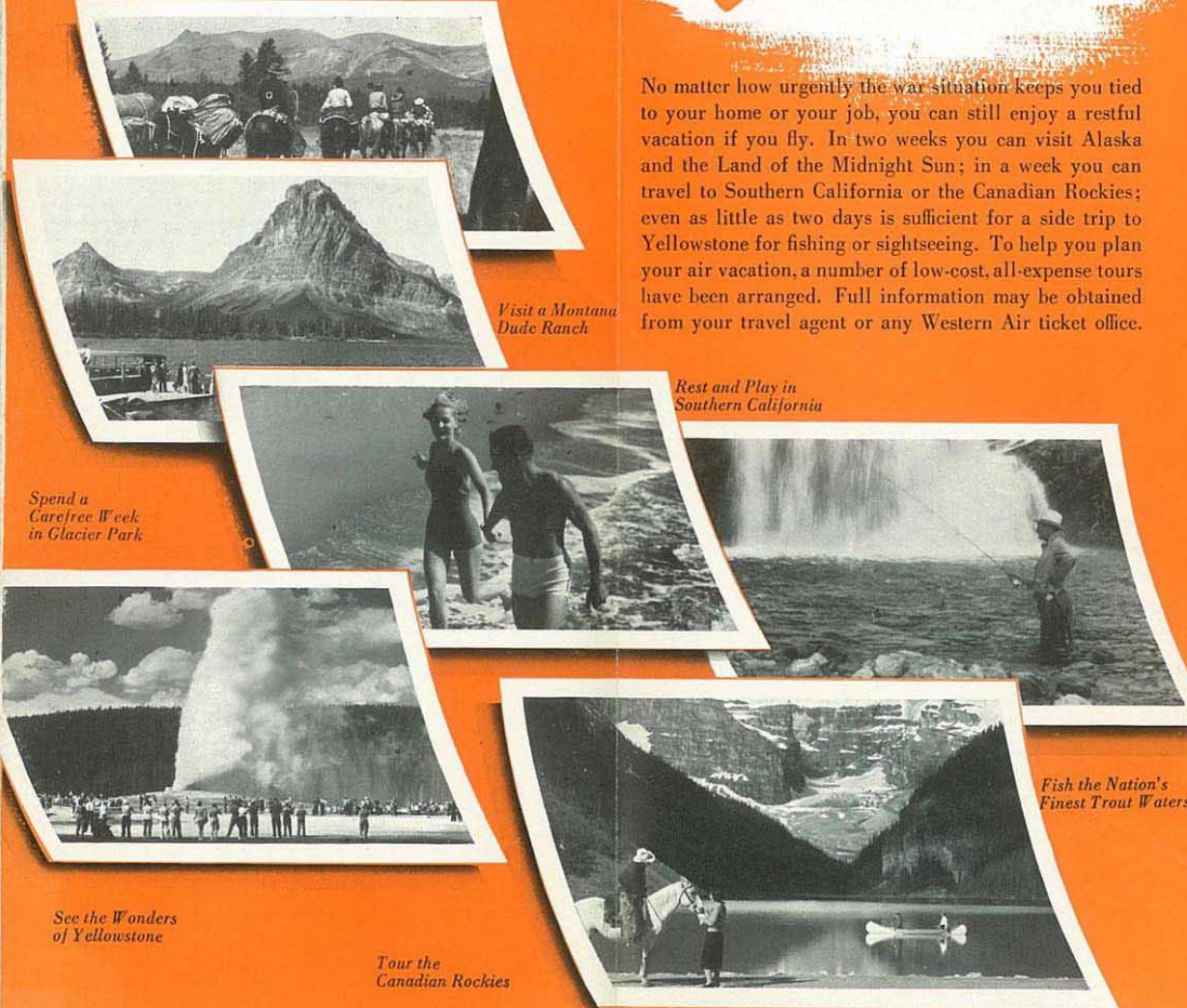
Printed in U.S.A.



THIS YEAR MAKE IT A

Western Air Vacation

No matter how urgently the war situation keeps you tied to your home or your job, you can still enjoy a restful vacation if you fly. In two weeks you can visit Alaska and the Land of the Midnight Sun; in a week you can travel to Southern California or the Canadian Rockies; even as little as two days is sufficient for a side trip to Yellowstone for fishing or sightseeing. To help you plan your air vacation, a number of low-cost, all-expense tours have been arranged. Full information may be obtained from your travel agent or any Western Air ticket office.



Visit a Montana Dude Ranch

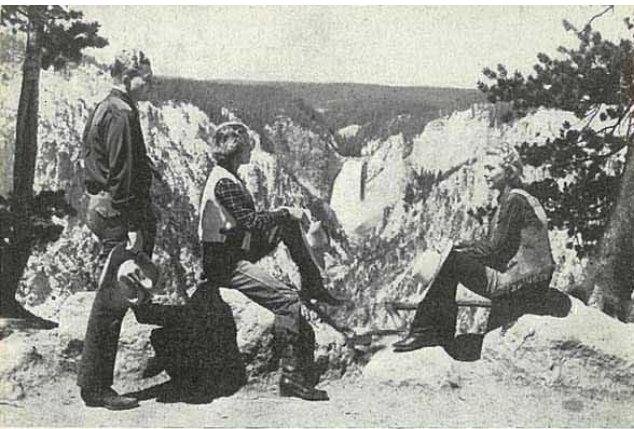
Rest and Play in Southern California

Spend a Carefree Week in Glacier Park

Fish the Nation's Finest Trout Waters

See the Wonders of Yellowstone

Tour the Canadian Rockies



Yellowstone Park

1-DAY SIDE TRIP . . . Once again this season Western Air Lines offers America's greatest travel bargain—a scenic side trip to and over Yellowstone Park. This remarkable flight affords magnificent views of the Grand Tetons, Yellowstone Lake and the geyser basins, passing directly over Old Faithful before landing at West Yellowstone airport. Available to transcontinental passengers for only \$15 round trip from Salt Lake City. Connects with all park tours.

2 1/2-DAY GROUND TOUR . . . This popular motor coach tour of the Park enables you to see all of Yellowstone's principal features comfortably and leisurely. Visits are made to the main Geyser Basins, Old Faithful, Yellowstone Lake, Mammoth Hot Springs, Yellowstone Falls and Grand Canyon. Tour includes overnight stops at Old Faithful Inn and Canyon Hotel, eight meals and round trip transportation from West Yellowstone.

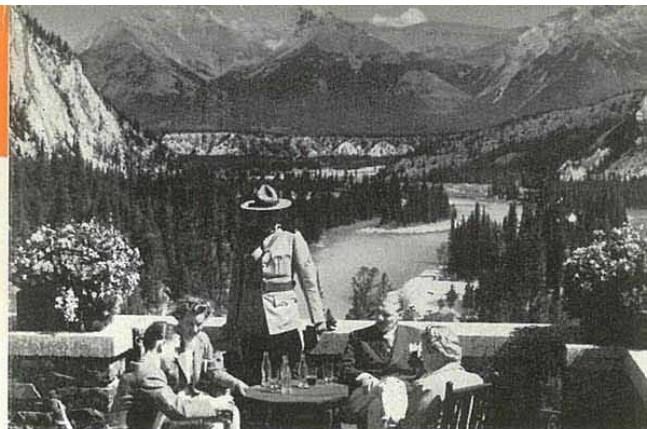
LOS ANGELES-SEATTLE CIRCLE TRIP VIA YELLOWSTONE . . . Sensational low fare on scenic circle trip via Los Angeles, Salt Lake City, Yellowstone Park, Butte, Seattle and San Francisco. Only \$123.00 for 2,600 miles of air travel over the nation's grandest scenery. Board the plane where you like—stop off at Yellowstone or any other city en route—the fare is the same.

WESTERN AIR LINES

LETHBRIDGE, CAN. ★ GREAT FALLS ★ SALT LAKE CITY ★ BOULDER DAM ★ LOS ANGELES ★ SAN DIEGO

Effective July 1, 1941		NORTHBOUND—READ DOWN						SOUTHBOUND—READ DOWN					
AM—Light Face	PM—Dark Face	Mls.	8	2	4	10	1 (b)	11 (b)	5 (b)				
SAN DIEGO (PT) Lv	0	8 50	11 40	3 00	5 35								
LONG BEACH Ar	94	f 9 30	12 20	f 3 40	h 6 15								
LONG BEACH Lv	94	f 9 35	12 25	f 3 45	h 6 20								
LOS ANGELES (PT) Ar	123	9 50	12 40	4 00	6 35								
		12	2	4 (c)	10 (n)	6 (n)							
LOS ANGELES (PT) Lv	123	* 9 00	* 1 00	* 5 00	* 7 00	* 10 30							
LAS VEGAS Ar	358	10 40	2 35	f 6 35	8 35	f 12 05							
LAS VEGAS Lv	358	10 50	2 45	f 6 45	8 45	f 12 15							
SALT LAKE CITY (p) (MT) Ar	713	2 05	5 50	9 50	11 45	3 20							
SAN FRANCISCO (PT) Lv			12 30		10 00								
SALT LAKE CITY (MT) Ar	713		5 48		3 44								
			2 (b)		14 (b)	6 (b)							
SALT LAKE CITY (p) (MT) Lv	713		* 6 15		* 6 30	4 00							
POCATELLO Ar	864		7 15		f 7 35	5 03							
POCATELLO Lv	864		7 25		f 7 45	5 10							
IDAHO FALLS Ar	912		x 7 48		f 8 10	5 33							
IDAHO FALLS Lv	912		x 7 53		f 8 15	* 5 38							
WEST YELLOWSTONE Ar					9 05								
WEST YELLOWSTONE Lv					9 30								
BUTTE Ar	1116		9 07		10 20	6 52							
BUTTE Lv	1116		9 25		7 07	7 37							
HELENA Ar	1168		x 9 55		7 37	8 12							
HELENA Lv	1168		x 10 00		7 42	8 25							
GREAT FALLS Ar	1236		10 30		8 12	8 25							
GREAT FALLS Lv	1236				8 25	9 05							
CUT BANK Ar	1309				9 05	9 10							
CUT BANK Lv	1309				9 10	9 40							
LETHBRIDGE (MT) Ar	1401				9 40								

DOUGLAS MAINLINE EQUIPMENT UNLESS OTHERWISE INDICATED
 f—Flag stop. h—Daily except flag stop Sundays and holidays.
 p—Sleeping accommodations provided without cost for passengers awaiting connections at Salt Lake Airport.
 s—Via Pennsylvania-Central Air Lines. u—Via United Air Lines. x—Occasional interruption only, account Airport improvements. y—Via American Air Lines. *—Complimentary meat aloft.
 †—Complimentary light refreshments aloft. ‡—Complimentary light lunch. ††—Via connecting airline. †††—Via connecting flight.
 ††††—Scenic flight over BIG BEAR LAKE, BOULDER DAM and ZION NATIONAL PARK. †††††—Multi-motor Boeing 247D Airliners. ††††††—Daily except Monday and Tuesday.
 †††††††—Thru Douglas Sleepers interchanged with United Air Lines. ††††††††—Via Mid-Continent Air Lines. †††††††††—Via Northwest Air Lines. ††††††††††—Via American Air Lines. †††††††††††—Complimentary meat aloft. ††††††††††††—Scenic flight via GRAND TETONS, OLD FAITHFUL, GEYSER BASINS. †††††††††††††—Yellowstone Service till September 15 only.



Glacier Park Banff Lake Louise

8-DAY GROUND TOUR

\$104⁴⁵

Truly the world's most spectacular scenic trip covering four national parks in the United States and Canada.

- FIRST DAY** By air to Cut Bank, Montana; thence by train and motor to Lake McDonald Hotel, Glacier Park.
- SECOND DAY** Spectacular mountain drive over Going-to-the-Sun Highway; launch ride on Swiftcurrent Lake; overnight at Many Glacier Hotel.
- THIRD DAY** By motor to Waterton Lakes Park, Canada; launch ride on lake; overnight at Prince of Wales Hotel.
- FOURTH DAY** By motor via Calgary and Bow River Valley to Banff; overnight at Banff Springs Hotel.
- FIFTH DAY** General drive around Banff; balance of day at leisure; overnight at Banff Springs Hotel.
- SIXTH DAY** By motor to Lake Louise; circle drive to Moraine Lake and Valley of Ten Peaks; overnight Chateau Lake Louise.
- SEVENTH DAY** By motor via Kicking Horse Pass to Emerald Lake for lunch; by motor to railway station at Field; by train to Calgary. Overnight at Palliser Hotel.
- EIGHTH DAY** By plane southbound to starting point.

*The cost of this tour is \$109.95, all-expense, from Cut Bank, less \$5.50 Canadian exchange discount, or \$104.45 net. For complete cost, add air fare as shown in the table on next page.

WESTERN AIR LINES THE Mainline AIRWAY UNITED AIR LINES

MAINLINE INTERCHANGE SCHEDULES								THROUGH SLEEPERS COAST TO COAST							
EASTBOUND July 1, 1941—READ DOWN—				WESTBOUND July 1, 1941—READ DOWN—				EASTBOUND July 1, 1941—READ DOWN—				WESTBOUND July 1, 1941—READ DOWN—			
	19 Daily	2 Daily	4 Daily	10 Daily	14 Daily	6 Daily	3 Daily	41 Daily	1 Daily	9 (n) Daily	25 Daily	15 Daily	5 (n) Daily	43 Daily	
SAN DIEGO (PT) Lv	u7 20	11 40	3 00	5 35			u9 15	Boston (y) (ET) Lv	7 00	7 20	3 20	5 20	9 15		
LONG BEACH Ar		12 20	f 3 40	h 6 15				NEW YORK (u) Lv	7 00	9 00	5 10	7 00	11 00		
LONG BEACH Lv		12 25	f 3 45	h 6 20				Washington (s) Lv	8 40	9 30	5 30	10 55			
LOS ANGELES (PT) Ar	u8 11	12 40	4 00	6 35			u10 06	CLEVELAND (u) Lv	11 30	8 10	10 00	2 00	7 15		
		12	2	4 (c)	10 (n)		6 (n)	Detroit (y) Lv	11 00	11 00	8 05	10 10	1 52	4 17	
LOS ANGELES (PT) Lv	9 00	1 00	5 00	7 00			10 30	CHICAGO (u) (CT) Ar	12 43	12 40	9 10	11 00	3 00	8 28	
LAS VEGAS Ar	10 40	2 35	f 6 35	8 35			f 12 05	CHICAGO (u) (CT) Lv	1 05	9 35	7 00	11 15	3 40	8 45	
LAS VEGAS Lv	10 50	2 45	f 6 45	8 40			f 12 15	Minneapolis (q) Lv	8 25	5 55	5 55	6 30	11 55		
SALT LAKE CITY (MT) Ar	2 05	5 50	9 50	11 45			3 20	OMAHA (u) Lv	4 15	10 45	2 15	6 55	6 30	11 55	
		12	2	38 (c)	10 (n)		16	6 (n)	6 30	5 14	1 15	6 54	11 39	11 46	
SALT LAKE CITY (MT) Lv	2 25	6 10	10 30	12 01			4 10	4 05	9 31	5 14	4 10	6 54	11 39	11 46	
DENVER (u) Ar	5 12	8 57					4 10	6 52							
DENVER (u) Lv	5 12	8 57					4 10	6 52							
Minneapolis (q) Ar	3 24	12 52	4 38	6 14			10 36	10 48							
Minneapolis (q) Lv	3 24	12 52	4 38	6 14			1 22	1 22							
CHICAGO (u) (CT) Ar	11 45	3 32	7 17	8 23			1 38	1 44							
		12	2	32	10 (n)		14	16							
CHICAGO (u) (CT) Lv	12 05	3 50	8 15	9 15	9 00	2 00									
Detroit (y) (ET) Ar		10 19	11 45	11 45	11 45	5 19									
CLEVELAND (u) Ar	2 53	6 38	11 03	12 03		4 48									
Washington (s) Ar	5 40	9 30	2 50	2 50		8 15									
NEW YORK (u) Ar	5 28	9 13	1 52	2 38		1 55	7 23								
Boston (y) (ET) Ar	7 30	12 15	3 45	4 17		3 45	8 45								

SAN DIEGO — LOS ANGELES — SAN FRANCISCO — PORTLAND — SEATTLE							
Northbound—Read Down				Southbound—Read Down			
	19	8	17	2	4	25	10
SAN DIEGO Lv	u7 20	8 50	u10 30	11 40	3 00	u4 25	5 35
LONG BEACH Lv		9 35		12 25	f 3 45		h 6 20
LOS ANGELES Ar	8 11	9 50	11 21	12 40	4 00	5 16	6 35
		19	29	17	73	11	25
LOS ANGELES Lv	8 30	11 00	12 00	1 45	4 30	5 30	7 45
BAKERSFIELD Ar	110 17				16 42		11 57
FRESNO Ar	110 59				17 29		12 44
SAN FRANCISCO Ar	10 30	1 00	2 00	4 38	6 30	7 30	9 45
PORTLAND Ar		5 15			10 50		42 05
SEATTLE Ar		6 27			11 57		6 15
							8 00
Southbound—Read Down							
	6	—	18	16	72 (b)	8	12
SEATTLE Lv	9 10						8 30
PORTLAND Lv	10 20						9 40
SAN FRANCISCO Lv	2 44		7 00	8 00	9 30	12 00	2 00
FRESNO Lv	4 04		18 24				
BAKERSFIELD Lv	4 51		19 11				
LOS ANGELES Ar	5 31		9 00	10 00	12 23	2 00	4 00
	6	1	18	9	7	8	5
LOS ANGELES Lv	u6 00	7 30	u9 15	10 15	1 30	u3 00	4 20
LONG BEACH Ar		f 7 45		10 30	f 1 45		h 4 35
SAN DIEGO Ar	6 51	8 30	10 06	11 15	2 30	3 51	5 20

INFORMATION—Season: June 15 to September 7. Accommodations: double occupancy, without bath in U. S., with bath in Canada. Add \$7.05 for single occupancy. Baggage: 40 pounds free on planes; one piece of hand baggage carried free on ground tours. Children: 12 years and under, half fare. Fares subject to change without notice.