

## FLYING IS WORLD'S MODERN TRANSPORTATION

FLYING is the world's most interesting form of travel, surpassing all surface transportation in comfort, convenience and enjoyment. Time saved is tremendous! Omaha is only five hours and twenty minutes from Oklahoma City; Salina fifty-five minutes from Wichita. Powerful planes piloted by experienced pilots over the most secure flying country in America assure your safety.

### How to Enjoy Your Flight

Observance of the following suggestions will add to your comfort and enjoyment:

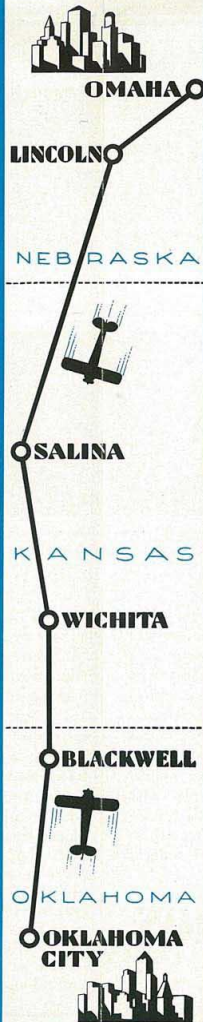
Passengers are required to remain seated until the plane has attained proper altitude and leveled off for direct flight. After the plane has leveled off passengers may change from one seat to another if they so desire.

Air sickness has been found to be more the result of the wrong mental attitude than anything else. Complete relaxation and an interest in the trip itself is found to be the best guard against it. Enjoy to the fullest extent the wonderful panorama; converse with your fellow passengers; observe the ease and the sureness of the way the pilot controls his plane by the manipulation of the controls. Should you feel that you are becoming sick please notify the pilot, who is thoroughly familiar with the best methods of relief.

A packet containing mint flavored chewing gum and ear cotton is provided for your comfort. The gum will have a tendency to ward off sickness and should the noise of the motor become irritating the cotton, if placed in the ears, will bring relief.

### Connecting Lines

At Omaha connections can be made with planes operating on regular schedule to Chicago and other eastern points or to Salt Lake City and San Francisco.



## WESTERN AIR SERVICE FOR CHARTERED TRIPS

Transfers can be made at Salina to Denver or Kansas City. Regular passenger air lines radiate out of Wichita to Kansas City, Denver, Los Angeles, Ponca City, Tulsa and other points. Air transportation can be secured from Oklahoma City to Tulsa, Dallas, Ft. Worth and other cities. Convenient rail or motor coach connections can be made at all points on the route.

### Special Chartered Trips

The Western Air Service Corporation maintains open cockpit and cabin planes at its Salina airport, which are available to any who wish to charter planes for special trips. Experienced pilots are available and charges are based on mileage rates.

### Flying Instruction

Complete flying instruction leading to private, commercial, or transport pilot's licenses is offered by the Western Air Service Corporation at Salina. In equipment, training personnel and economical tuition this school is probably not excelled in the Middle West. Complete information can be secured by addressing the company at Salina.

### Reservations

Reservations for seating space should be made in advance if possible. Telephone numbers of places where reservations can be made and tickets secured can be found on the back of this folder.

### Safety

Air travel has been placed on a safety basis through the employment of veteran pilots who have been carefully selected for their ability as flyers and experience in the air. This fact coupled with new ships, carefully inspected before every trip, eliminates the dangers of air travel. All pilots are under rigid regulations and observation.

## SCHEDULE AND FARES

### Oklahoma City—Omaha Air Line

Light figures indicate a. m. time. Bold figures indicate p. m. time.

Northbound Read Down	Miles		Miles	Southbound Read Up
Lv. 7:30	0	.....OKLAHOMA CITY.....	450	Ar. 1:55
Ar. 8:30	100	.....*BLACKWELL.....	350	Lv. 12:50
Lv. 8:35				Ar. 12:45
Ar. 9:15	160	.....WICHITA.....	290	Lv. 12:05
Lv. 9:25				Ar. 11:55
Ar. 10:20	245	.....SALINA.....	205	Lv. 11:00
Lv. 10:40				Ar. 10:40
Ar. 12:10	395	.....*LINCOLN.....	55	Lv. 9:05
Lv. 12:15				Ar. 9:00
Ar. 12:50	450	.....OMAHA.....	0	Lv. 8:20

\* Flag Stops Only

**Equipment**—All planes on Oklahoma City—Omaha line are Stinson-Detroit cabin planes, operated by Department of Commerce licensed Transport Pilots.

**Baggage**—Thirty pounds allowed free with each ticket. Excess up to 50 pounds at rate of 1/10 of 1c per pound per mile.

**Transportation**—Automobiles are available for direct transportation between airports and business districts of terminal cities.

### Passenger Fares

TO FROM	TO					
	Okla. City	Blackwell	Wichita	Salina	Lincoln	Omaha
Oklahoma City...		\$6.50	\$10.50	\$16.00	\$25.75	\$27.50
Blackwell.....	\$6.50		4.50	9.50	19.50	22.75
Wichita.....	10.50	4.50		5.50	15.25	17.75
Salina.....	16.00	9.50	5.50		9.75	13.50
Lincoln.....	25.75	19.50	15.25	9.75		†
Omaha.....	27.50	22.75	17.75	13.50	†	

† Do not operate intra-state in Nebraska.

**Passenger Conditions**—Tickets good for 30 days. Children under 2 years of age carried free. Passage is conditional upon amount of space available.

Right is reserved to cancel bookings before passage or enroute.

**Reservations**—All seats reserved. Tickets must be purchased in advance to be certain of space reservation.

### TICKET OFFICES

**Oklahoma City**—Skirvin Hotel, Phone 21251; Huckins Hotel, Phone 71501; Wells-Roberts Hotel, Phone 35241; Municipal Airport, Phone 38700.

**Blackwell**—Larkin Hotel, Phone 1162; Municipal Airport, Phone 282.

**Wichita**—Lassen Hotel, Phone 45311; Broadview Hotel; Commodore Hotel; Municipal Airport, Phone 41152.

**Salina**—Lamer Hotel, Phone 2000; Warren Hotel, Phone 1500; Clayton Hotel Phone 77; Municipal Airport, Phone 3444.

**Lincoln**—Cornhusker Hotel, Phone B-6971; Lincoln Hotel, Phone B-6601; Capital Hotel, Phone B-1261; Union Airport Phone, Havlock 456

**Omaha**—Fontanelle Hotel, Phone A-Tlantic 5088; Paxton Hotel, Phone A-Tlantic 8326; Airport, Phone WEbster 0260.

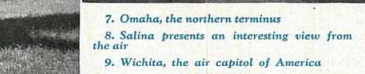
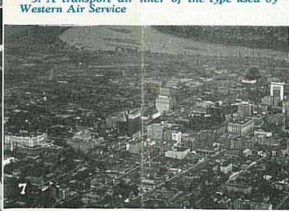
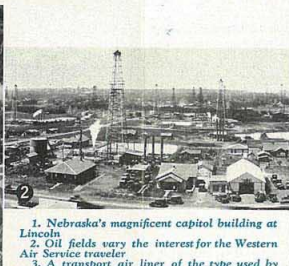
# THE WESTERN AIR SERVICE CORPORATION



## DAILY AIR TRANSPORTATION

between  
OMAHA  
LINCOLN  
SALINA  
WICHITA  
BLACKWELL  
OKLAHOMA CITY





1. Nebraska's magnificent capitol building at Lincoln  
 2. Oil fields vary the interest for the Western Air Service traveler  
 3. A transport air liner of the type used by Western Air Service

7. Omaha, the northern terminus  
 8. Salina presents an interesting view from the air  
 9. Wichita, the air capital of America

4. A Kansas farm scene from the air  
 5. The airport at Wichita is numbered among the nation's finest  
 6. Western Air Service pilots discussing weather conditions before their take-off

10. Oklahoma City, the southern terminus  
 11. Passengers and pilot discuss flying

Air travel is convenient and delightful. Its speed, comfort and cleanliness have enabled it to take its place in the front rank of modern transportation methods. A Western Air Service plane will carry you between Oklahoma City and Omaha in less than six hours. You will find the trip invigorating and you will arrive at your destination in time to conduct a half-day's business. There is none of the dust, smoke, jarring or jolting that is so irritating in motor or rail transportation and the trip does not tire you. The cabins are well appointed, roomy, and

Western Air Service depot at the Salina airport



equipped with deep cushioned, luxurious chairs. They can be heated and are well ventilated, thus making it possible to travel in your regular street or business clothes.

The Western Air Service Corporation is very fortunate in its location. The flat prairie country over which it operates is in an area conceded to be one of the safest flying regions in the world. Weather conditions are ideal almost the year around; yet reports are received daily at all stations and no plane is started unless conditions assure that it can go through. The level terrain of the country makes it possible for a plane to be within gliding distance of a suitable landing place at almost any point on the route. The pilots, all veterans of the air lines, have been carefully selected. Their years of varied flying experience has taught them to refrain from taking unnecessary chances and has given them the judgment to be master of any situation in the

air. Six place Stinson-Detroit cabin planes powered with 300 horse-power Wright-Whirlwind motors are used. These are sturdy, comfortable, luxurious and powerful planes, which can carry you at least one hundred miles an hour over level country with every precaution exercised to insure your safety. All planes are inspected before and after each trip by experienced mechanics who keep a constant check in order that the ships can be kept in perfect condition. Government inspection of all equipment is made at regular intervals. The Western Air Service Corporation is a chartered public service corporation and is operating under strict supervision of the Department of Commerce of the federal government.

The Western Air Service Corporation has filled a vital transportation need in linking the important Midwestern cities of Omaha, Lincoln, Salina, Wichita, Blackwell and Oklahoma City with a quick and dependable transportation system. Heretofore north and south transportation, with a few exceptions, has been slow and inconvenient between these communities. It is now possible for one to board a modern transport plane at any scheduled stopping place mentioned and be carried to any other point of the line with the utmost comfort and security. This service has placed these cities, some of which were a day-and-night's distance apart by rail, to within a few hours of each other. This service is proving profitable to many.

North and south bound planes are refueled and the motors checked at Salina



# THE WESTERN AIR SERVICE CORPORATION

## SALINA KANSAS