

SHELL Aviation Gasoline, AeroShell, Lubricating Oil, and Shell Service are available on all the major and most of the minor aerodromes throughout the world.

The quality of Shell products and service offered by Shell are second to none, and they have both played a considerable part in the development of Civil Aviation.



SHELL SERVICE



KLM

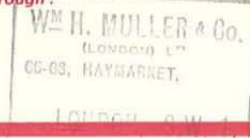
ROYAL DUTCH AIR LINES - HOLLAND
 IN CONNECTION WITH: A.B. AEROTRANSPORT
 DEUTSCHE LUFTHANSA A.G. - AIR FRANCE

WINTER SERVICE 1933/1934

VALID FROM NOVEMBER 1ST UNTIL FEBRUARY 28TH INCL.

Book your seat through:

EUROPEAN SERVICES



This time table cancels all previous issues and is subject to alteration without notice.

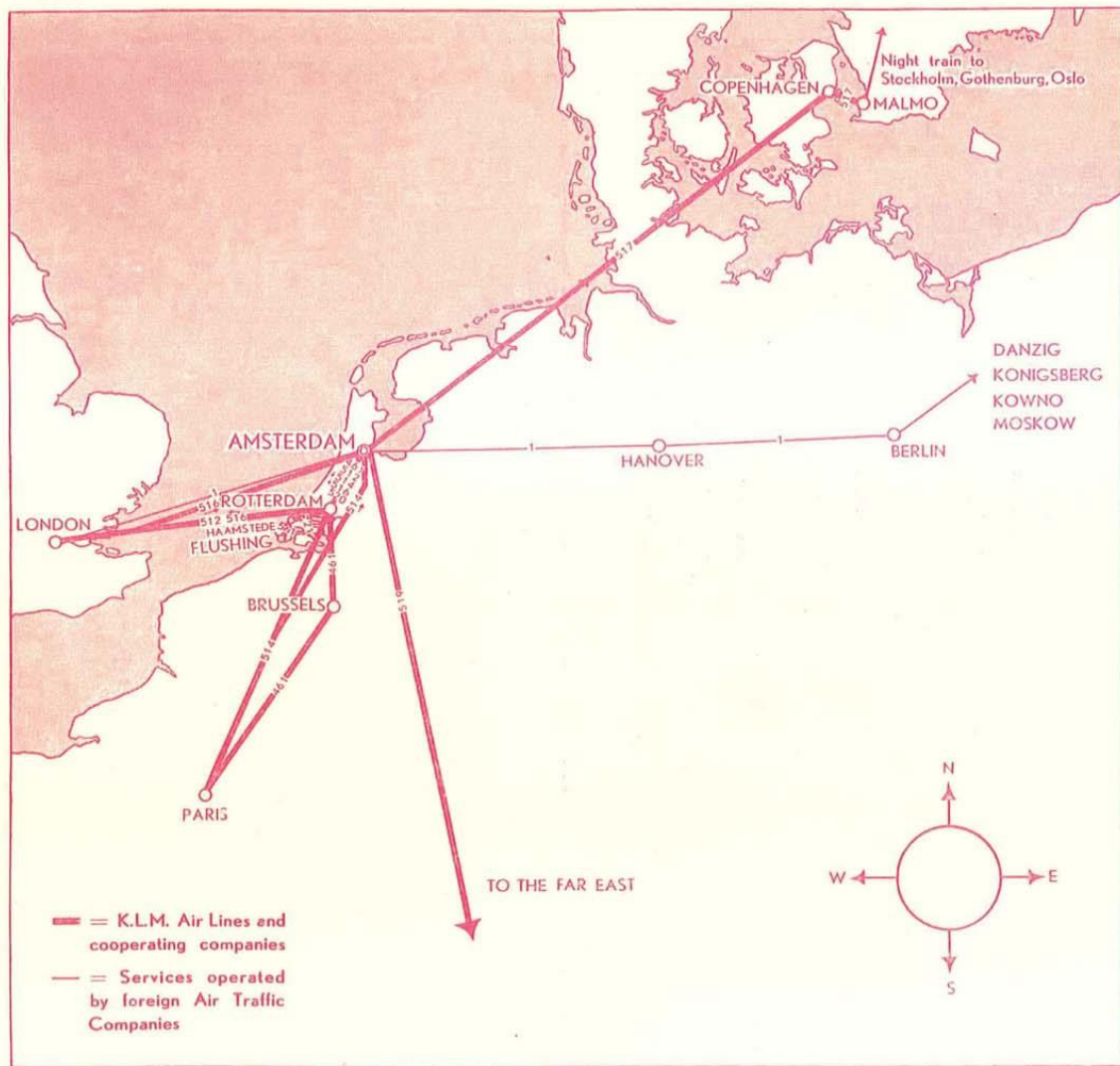
C O N T E N T S

	Page
Schedule of European Air Lines:	
inside cover	
"K.L.M." offices	1
From London to Rotterdam and Amsterdam	2
From London to Amsterdam, Copenhagen and Malmo	3
From London to Amsterdam, Hanover and Berlin	4
From Paris to Brussels, Rotterdam and Amsterdam	5
From Paris to Amsterdam, Copenhagen and Malmo	6
From Amsterdam to Rotterdam	7
From Amsterdam and Rotterdam to Haamstede and Flushing	7
Departure and arrival	8
Fares, baggage and Freight rates.	9
Notes for passengers	10
Notes for freight senders.	11
K.L.M. Air Line Amsterdam - Batavia (Holland - Java)	12

EUROPEAN AIR SERVICES

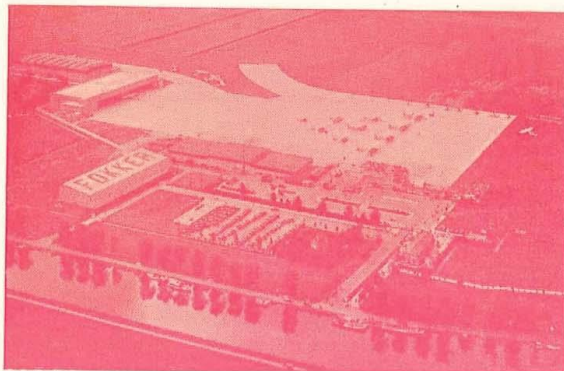


WINTER 1933/34



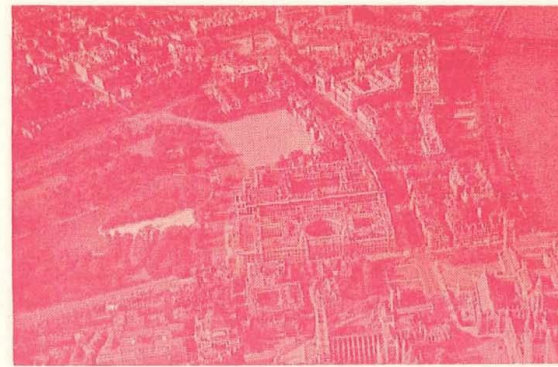
"K.L.M." OFFICES LONDON AND CONTINENTAL

- LONDON**
- WEST-END OFFICE.**
Wm H. Müller & Co. (London) Ltd., Greener House
66/68, Haymarket S. W. 1.
Telephone: Whitehall 7331.
Telegrams: Bataviline Lesquare-London.
- CITY OFFICE.**
Electra House, 78, Moorgate, E. C. 2.
Telephone: Metropolitan 6298.
- ARRIVAL AND DEPARTURE STATION,**
Hotel Victoria, Northumberland Avenue,
Trafalgar Square, W. C. 2.
Telephone: Whitehall 3426.
- AERODROME OFFICE.**
Air Port of London, Croydon, Surrey.
Telephone: Croydon 2810-2811 and 1436. Night:
Fairfield 6521. Private (Airport Manager) Burgh
Heath 1433.
Telegrams: Transaera-Croydon.
- PARIS**
- Air France, 9 Rue Auber. Tel. Opéra 41-00
(6 Lignes).
Telegrams: Airfransag-Paris.
- ARRIVAL AND DEPARTURE STATION, AIR
FRANCE TERMINUS, Place Lafayette,**
Telephone: Taitbout 48.49.
- AERODROME OFFICE.**
Le Bourget Aerodrome, K.L.M. Office.
Telephone: Nord 83-02, Nord 15-23, Nord
84-10 and Nord 84-94.
Telegrams: Kalmæra Paris T.T.
- AMSTERDAM**
- K. L. M. Office, Leidscheplein.
Telephone: 33480 (Passengers), 42302
(Freight Dept), and 35982.
Telegrams: Transaera-Amsterdam.
Schiphol Aerodrome Tel. 29800.
Central Booking Office Tel. 25039 (Day and
Night).
Telegrams: Transaera-Amsterdam.
- BRUSSELS**
- Booking Office S.A.B.E.N.A., 32-34 Boulevard
Adolphe Max.
Telephone: 17.10.06.
Telegrams: Airsabena, Brussels.
- COPENHAGEN**
- Booking Office Det Danske Luftfartselskab,
"Vesterport" Meldahlsvej 5.
Telephone: C. 8800.
Telegrams: Luftfart-Copenhagen.
K.L.M. Office, Kastrup Aerodrome.
Telephone: Kastrup 440 and 488.
Telegrams: Transaera-Copenhagen.
- THE HAGUE**
- K.L.M. Head-Office, 9 Hofweg.
Telephone: 117600.
Telegrams: Transaera-The Hague.
- MALMO**
- A. B. Aerotransport, Bulltofta Aerodrome.
Telephone: 71290.
Telegrams: Namrolf-Malmo.
- NEW YORK**
- Mr. G. H. Ravelli, Chrysler Building, Lexington
Avenue and 42nd Street, Rooms 520-524.
- OSLO**
- Messrs. Halle & Peterson, Skippersgatan 22.
Telephone: 21107 and 21295.
- ROTTERDAM**
- K.L.M. Office, 115 Cooolsingel.
Telephone: 57780.
Telegrams: Transaera-Rotterdam.
Waalhaven Aerodrome. Tel. 25080 (3 lines).
Telegrams: Transaera-Rotterdam.
- STOCKHOLM**
- A. B. Aerotransport,
Lindarängen.
Telephone: 73488 and 79395.
Telegrams: Airticket-Stockholm.



SCHIPHOL AERODROME

AMSTERDAM



LONDON

Aerofilms

LONDON-ROTTERDAM-AMSTERDAM v.v.

READ DOWN			READ UP		
516		512	K.L.M. Lines 512, 516, 520		
"The Scandinavian Air Express"		Weekdays only	Weekdays only	"The Scandinavian Air Express"	
From December 1st until January 15th incl.	Daily			Daily	From November 1st until November 30th incl. and from Jan. 16th until Feb. 28th incl.
7.30	8.00	12.25	dep. LONDON (Hotel Victoria)	arr. 12.25	15.35
	8.20	13.15	dep. Croydon Aerodr.	arr. 11.35	14.45
		15.25	arr. ROTTERDAM	dep. 9.50	13.15
		15.35	dep. (Waalhaven Aerodr.)	arr. 9.40	13.10
10.35	11.05	16.00	arr. AMSTERDAM (Schiphol Aerodr.)	dep. 9.15	12.45
Weekdays only *)					
10.50	11.20	—	dep. (520) Amsterdam	—	—
11.20	11.50	—	arr. Rotterdam	—	—

*) Sundays optional.

READ DOWN		Deutsche Lufthansa A.G. Line 1		READ UP	
1 Weekdays only				1 Weekdays only	
9.15	dep.	LONDON (Victoria Station)	arr.	15.50	
10.00	dep.	Croydon Aerodr.	arr.	15.05	
12.40	arr.	AMSTERDAM (Schiphol Aerodr.)	dep.	13.00	

LONDON-AMSTERDAM-COPENHAGEN-MALMO v.v.

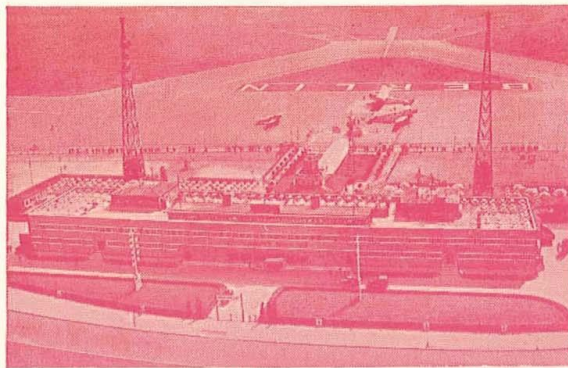
READ DOWN			READ UP		
516		K.L.M. - Line 516 K.L.M. & A.B. Aerotransport Line 517			516
"The Scandinavian Air Express"					"The Scandinavian Air Express"
From December 1st until January 15th incl.	Daily	From November 1st until November 30th incl. and from Jan. 16th until Feb. 28th incl.	Daily	From November 1st until November 30th incl. and from Jan. 16th until Feb. 28th incl.	Daily
7.30	8.00	dep. LONDON (Hotel Victoria)	arr. 12.25	15.35	
	8.20	dep. Croydon Aerodr.	arr. 11.35	14.45	
		arr. ROTTERDAM	dep. 9.50	13.15	
		dep. (Waalhaven Aerodrome)	arr. 9.40	13.10	
10.35	11.05	arr. AMSTERDAM (Schiphol Aerodrome)	dep. 9.15	12.45	
		dep. (Schiphol Aerodrome)	arr. 12.05		
14.35	15.05	arr. COPENHAGEN	dep. 8.55		
14.45	15.15	dep. (Kastrup Aerodrome)	arr. 8.45		
15.00	15.30	arr. MALMO (Bulltofta Aerodrome)	dep. 8.30		

At Malmo through connection by night train to and from Stockholm, Gothenburg and Oslo.

At Stockholm air service to and from Helsingfors (until December 15th).

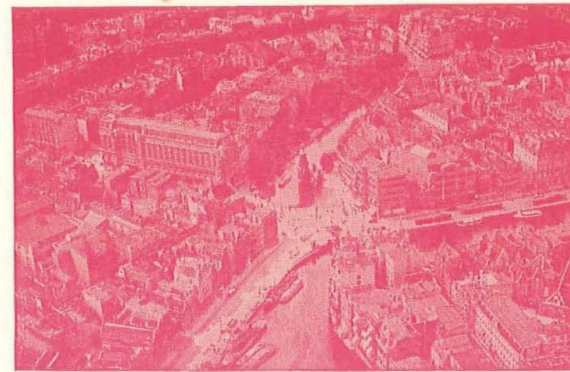
All K.L.M. and A.B. Aerotransport Air Liners on the Amsterdam-Scandinavia route (517) have a buffet and steward who will serve an excellent lunch and refreshments during the flight, at moderate charges.

(Meals and refreshments are not included in the fare).



TEMPELHOF AERODROME, BERLIN

Hansa Luftbild



OLD AMSTERDAM

LONDON – AMSTERDAM – HANOVER –
BERLIN v. v.

READ DOWN	Deutsche Lufthansa A.G. Line 1		READ UP
1 Weekdays only			1 Weekdays only
9.15	dep. LONDON (Victoria Station)	arr.	15.50
10.00	dep. Croydon Aerodr.	arr.	15.05
12.40	arr. AMSTERDAM (Schiphol Aerodr.)	dep.	13.00
12.55	dep.	arr.	12.45
15.25	arr. HANOVER (Vahrenwalderheide Aerodr.)	dep.	11.25
15.40	dep.	arr.	11.10
17.05	arr. BERLIN (Tempelhof Aerodr.)	dep.	9.40
<i>At Hanover connection from Hamburg (dep. 10.25)</i>			

PARIS – BRUSSELS – ROTTERDAM –
AMSTERDAM v. v.

READ DOWN			K. L. M. – Line 514 Air France – Line 461		READ UP	
514 "The Scandinavian Air Express" Daily From Dec. 1st until Jan. 15th incl.	461 Daily From Nov. 30th until Jan. 16th and from Jan. 16th until Febr. 28th incl.	Weekdays only	Weekdays only	Weekdays only	Weekdays only	"The Scandinavian Air Express" Daily
7.40	8.10	11.20	dep. PARIS (Air France Terminus) (Place Lafayette)	arr.	12.35	15.30
8.10	8.40	11.50	dep. Le Bourget Aerodr.	arr.	12.05	15.00
		13.20	arr. BRUSSELS	dep.	10.30	
		13.35	dep. (Haren Aerodr.)	arr.	10.15	
		14.40	arr. ROTTERDAM	dep.	9.50	13.15
		14.50	dep. (Waalhaven Aerodr.)	arr.	9.40	13.10
10.35	11.05	15.15	arr. AMSTERDAM (Schiphol Aerodr.)	dep.	9.15	12.45
10.50	11.20	—	Weekdays only *) dep. (520) Amsterdam	arr.	—	—
11.20	11.50	—	arr. Rotterdam	dep.	—	—

ⓐ) Landing for passengers only.

*) Sundays optional.



COPENHAGEN

Foto Bendt Rom

PARIS — AMSTERDAM — COPENHAGEN —
MALMO v.v.

READ DOWN				READ UP	
514 "The Scandinavian Air Express"		K.L.M. — Line 514 K.L.M. & A.B. Aerotransport Line 517		514 "The Scandinavian Air Express" Daily	
Daily From Dec. 1st until Jan. 15th incl.	Daily From Nov. 1st until Nov. 30th incl. and from Jan. 16th until Febr. 28th incl.				
7.40	8.10	dep. PARIS (Air France Terminus (Place Lafayette))	arr.	15.30	
	8.10	dep. Le Bourget Aerodr.	arr.	15.00	
		arr. ROTTERDAM (Waalhaven Aerodr.)	dep.	13.15	O)
		dep. ROTTERDAM (Waalhaven Aerodr.)	arr.	13.10	
10.35 (517)	11.05 (517)	arr. AMSTERDAM (Schiphol Aerodr.)	dep.	12.45 (517)	
10.50	11.20	dep. AMSTERDAM (Schiphol Aerodr.)	arr.	12.05	
14.35	15.05	arr. COPENHAGEN (Kastrup Aerodr.)	dep.	8.55	
14.45	15.15	dep. COPENHAGEN (Kastrup Aerodr.)	arr.	8.45	
15.00	15.30	arr. MALMO (Bulltofta Aerodr.)	dep.	8.30	

At Malmo through connection by night train to and from Stockholm, Gothenburg and Oslo.
At Stockholm air service to and from Helsingfors (until December 15th.)

O) Landing for passengers only.

All K.L.M. and A.B. Aerotransport Air Liners on the Amsterdam-Scandinavia route (517) have a buffet and steward who will serve an excellent lunch and refreshments during the flight at moderate charges.
(Meals and refreshments are not included in the fare).

AMSTERDAM — ROTTERDAM v.v.

READ DOWN				READ UP	
520 Weekdays only*)		K.L.M. — Line 520		520 Weekdays only*)	
From Dec. 1st until Jan. 15th incl.	From Nov. 1st until Nov. 30th and from Jan. 16th until Febr. 28th incl.			From Dec. 1st until Jan. 15th incl.	From Nov. 1st until Nov. 30th and from Jan. 16th until Febr. 28th incl.
10.50	11.20	dep. AMSTERDAM (Schiphol Aerodr.)	arr.	10.30	11.00
11.20	11.50	arr. ROTTERDAM (Waalhaven Aerodr.)	dep.	10.00	10.30

*) Sundays optional.

ROTTERDAM-HAAMSTEDE-FLUSHING v.v.

READ DOWN				READ UP	
521 Weekdays only		K.L.M. — Line 521		521 Weekdays only	
Not on Saturday	Saturday only	UNTIL FURTHER NOTICE		Not on Saturday	Saturday only
12.00	13.20	dep. ROTTERDAM (Waalhaven Aerodr.)	arr.	14.30	15.15
12.30	13.50	arr. HAAMSTEDE (Aerodr. West-Schouwen)	dep.	14.00	14.45
12.35	13.55	dep. HAAMSTEDE (Aerodr. West-Schouwen)	arr.	13.55	14.40
12.50	14.10	arr. FLUSHING (Aerodrome)	dep.	13.40	14.25

At Rotterdam connection to and from Amsterdam
(Line 461, 512 or 520)

To any part
of the world



SPECIAL FLIGHTS

can be arranged

DEPARTURE AND ARRIVAL

By passenger car to and from Aerodromes.
The scheduled number of minutes spent
in transit between the stations and the
Air Ports is given in brackets.

AMSTERDAM:	Booking Office K.L.M., Leidscheplein (50).
BERLIN:	No car service. Connections: Underground and connecting tramway line 35 to the aerodrome.
BRUSSELS:	Booking Office Sabena, Blvd. Adolphe Max 32 (45).
COPENHAGEN:	Booking Office D.D.L., Vesterport Meldahls-gade 5. (about 60 min.)
HANOVER:	Central Station, to Berlin: 15.10, to Amsterdam: 11.00.
LONDON:	K.L.M. Hotel Victoria, Northumberland Avenue near Trafalgar Square (50). D.L.H. Airway Terminus, Victoria Station (45).
MALMO:	Central Station: (30).
PARIS:	Air France Terminus, Place Lafayette (30).
ROTTERDAM:	Booking Office K.L.M., Coolingsel 115 (40).

WEEKLY K·L·M·SERVICE AMSTERDAM-BATAVIA

(HOLLAND-JAVA)

CONNECTION
WITH LONDON

From LONDON to CALCUTTA
in **8** days!

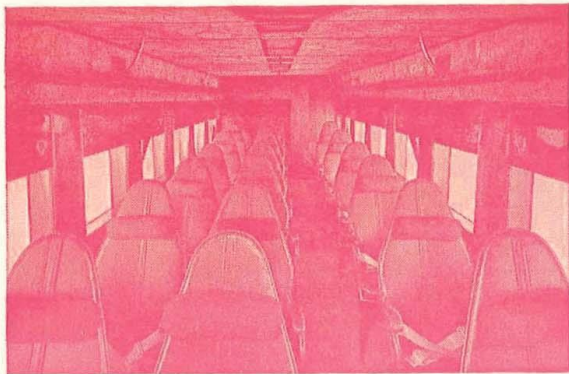
From LONDON to SINGAPORE
in **10** days!

FARES, BAGGAGE AND FREIGHT RATES

	Single Fares	Return Fares	Excess Baggage rates per K.G. *)	Freight rates per K.G. **)
LONDON to:	£	£	sh.	sh.
Amsterdam	5.—	8.10.—	-/10	-/10
Berlin	10.—	17.—	1/8	1/10
Copenhagen	12.—	20. 8.—	1/6	2/-
Hanover	7.17. 6	13. 7. 9	1/4	1/3
Malmo	12.10.—	21. 5.—	1/6	2/1
Rotterdam	5.—	8.10.—	-/10	-/10
AMSTERDAM to:	Fl.	Fl.	Fl.	Fl.
Berlin	42.—	71.40	0.40	0.60
Brussels	15.—	25.50	0.15	0.30
Copenhagen	77.—	130.90	0.50	0.85
Flushing	11.75	19.95	0.10	0.30
Haarstede	9.—	15.30	0.10	0.25
Hanover	24.—	40.80	0.25	0.40
London	48.—	81.60	0.50	0.50
Malmo	81.—	137.70	0.50	0.90
Paris	30.—	51.—	0.30	0.50
Rotterdam	6.—	10.—	0.05	0.10
BERLIN to:	R.M.	R.M.	R.M.	R.M.
Amsterdam	70.—	119.—	0.70	1.—
Hanover	30.—	51.—	0.30	0.45
London	150.—	255.—	1.50	1.80
BRUSSELS to:	B.Frs.	B.Frs.	B.Frs.	B.Frs.
Amsterdam	215.—	365.50	2.—	4.20
Paris	250.—	425.—	2.50	5.20
Rotterdam	170.—	289.—	1.50	4.20
COPENHAGEN to:	D.Crs.	D.Crs.	D.Crs.	D.Crs.
Amsterdam	155.—	294.50	0.75	1.65
London	215.—	408.50	1.—	2.10
Malmo	10.—	17.—	0.10	0.35
Paris	220.—	400.—	1.—	2.05
Rotterdam	162.—	307.80	0.75	1.65
MALMO to:	S.Crs.	S.Crs.	S.Crs.	S.Crs.
Amsterdam	165.—	280.50	0.80	1.65
Copenhagen	10.—	17.—	0.10	0.30
London	225.—	382.50	1.—	2.10
Paris	225.—	385.—	1.—	1.95
Rotterdam	172.—	292.40	0.80	1.65
PARIS to:	Fr.Frs.	Fr.Frs.	Fr.Frs.	Fr.Frs.
Amsterdam	300.—	510.—	3.—	5.—
Brussels	175.—	297.50	1.75	3.50
Copenhagen	970.—	1570.—	7.50	12.—
Malmo	1040.—	1770.—	7.50	12.50
Rotterdam	300.—	510.—	3.—	5.—
ROTTERDAM to:	Fl.	Fl.	Fl.	Fl.
Amsterdam	6.—	10.—	0.05	0.10
Brussels	12.—	20.40	0.10	0.30
Copenhagen	80.—	136.—	0.50	0.85
Flushing	8.75	14.90	0.10	0.25
Haarstede	6.—	10.—	0.05	0.20
London	45.—	76.50	0.45	0.50
Malmo	84.—	142.80	0.50	0.90
Paris	30.—	51.—	0.30	0.50

*) 15 Kgs (30 lbs) of luggage is carried free for each passenger.

***) From London increased by 25%.



CABIN OF A "K.L.M." PASSENGER PLANE

NOTES FOR PASSENGERS

AEROPLANES. — The world famous twin and three engined Fokker Monoplanes are used on all K.L.M. routes. All planes will be heated, so that a journey on the coldest day will offer the same comfort and pleasure as during the summer months.

PILOTS. — All K.L.M. Pilots are highly trained experienced Air Line Pilots.

MECHANICS. — Certificated mechanics are carried on K.L.M. aircraft.

WIRELESS. — Constant touch is maintained with ground stations and other aircraft by wireless, by all K.L.M. aeroplanes whilst in flight.

AERODROMES. — At all Aerodromes, motor cars carry Passengers to the centre of the city and vice versa without extra cost. (Berlin exc.)

LUNCHEON BASKETS. — Luncheon baskets may be obtained at all Aerodromes, and Passengers are advised to order these at the time of booking their tickets.

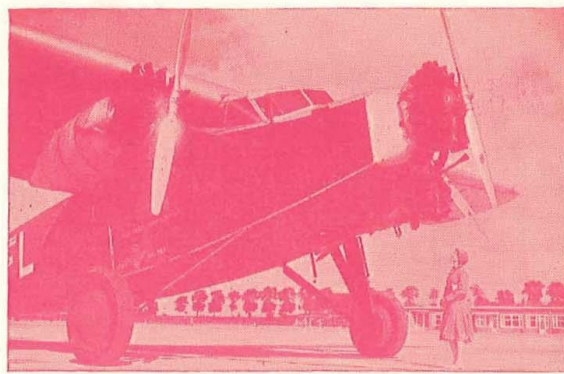
RESERVATIONS. — Seats should be booked in advance. Any Agent or Tourist Office can reserve a seat on request.

CHILDREN. — Children up to 3 years, accompanied by adults, are carried at a charge equivalent to 10 % of the normal fare. Children up to 7 years and younger children for whom a separate seat is required are carried at half fare.

LUGGAGE. — 15 Kgs. (30 lbs) of luggage is carried free for each Passenger. Excess luggage according to Excess Baggage rates. Steamer trunks can be carried.

MAPS OF THE ROUTE. — Maps of all K.L.M. routes can be obtained at the K.L.M. Offices and Aerodromes.

RETURN TICKETS are valid for a period of two months from the date of issue.



FOKKER MONOPLANE OF THE "K.L.M."

NOTES FOR FREIGHT SENDERS

CONSIGNMENTS. — K.L.M. Air Lines can convey practically any class of Freight, either in small parcels or consignments of several tons.

LIGHT AND BULKY PARCELS. — For light and bulky parcels cubic capacity rates are charged.

PACKING COST. — Packing cost is reduced to a minimum by forwarding by air.

CLEARANCE AND DELIVERY. — Goods are cleared through the Customs at the aerodromes with a minimum of delay and are immediately delivered by special vans to their destination.

CONVEYANCE OF LIVESTOCK. — Special rates which will be found extremely reasonable are charged for livestock. Apply for the special K.L.M. livestock pamphlet.

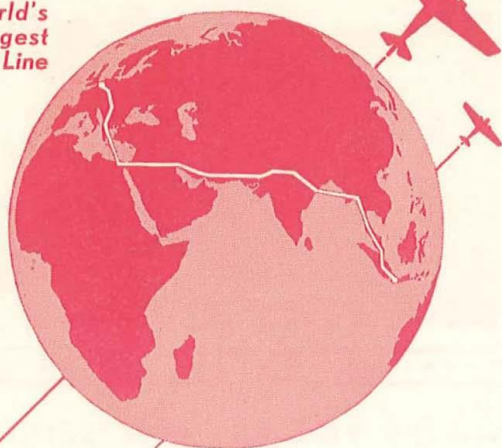
COLLECTION IN LONDON. — Goods for despatch by K.L.M. Air Lines can be collected from any address in the City or West End of London, or they may be handed in to our Head Agents: Messrs. Wm H. Müller & Co. (London) Ltd., 66/68 Haymarket, S.W. 1, and Electra House, 78 Moorgate, E.C. 2, or to any of the Company's freight Agents.

FROM THE PROVINCES. — Goods may be despatched by passenger train to any London Railway Station for collection by K.L.M. Such consignments should be addressed to the Company's Head Agents and marked "to be called for". Senders should advise the Head Agents, Messrs. Wm H. Müller & Co. (London) Ltd., 66/68, Haymarket, S.W. 1.

Minimum per Consignment charges for 2 Kgs.

Special Rates are quoted for regular or large consignments.

World's
Longest
Air Line



K·L·M
WEEKLY
SERVICE

**AMSTERDAM
BATAVIA V.V.**
(HOLLAND - JAVA)

PASSENGERS · MAIL · FREIGHT

9000 MILES IN 10 DAYS

FROM AMSTERDAM:

EVERY THURSDAY

FROM BATAVIA:

EVERY WEDNESDAY

TIME TABLE

AMSTERDAM-BATAVIA ROUTE

WINTER- AND SPRING SERVICE
NOVEMBER 1st 1933 - MAY 1st 1934

1. Thursday	AMSTERDAM MARSEILLES ROME	10. Friday
2. Friday	ROME ATHENS	9. Thursday
3. Saturday	ATHENS MERZA MATRUH *) CAIRO	8. Wednesday
4. Sunday	CAIRO GAZA BAGHDAD	7. Tuesday
5. Monday	BAGHDAD BUSHIRE JASK	6. Monday
6. Tuesday	JASK KARACHI JODHPUR	5. Sunday
7. Wednesday	JODHPUR ALLAHABAD CALCUTTA	4. Saturday
8. Thursday	CALCUTTA AKYAB *) RANGOON BANGKOK	3. Friday
9. Friday	BANGKOK ALOR STAR (MEDANI **) SINGAPORE	2. Thursday
10. Saturday	SINGAPORE PALEMBANG BATAVIA BANDOUNG (SEMARANG) **) (SOURABAYA) **)	1. Wednesday

*) Optional.
**) Connection K. N. I. L. M.

ALL INFORMATION AT K. L. M.
AGENTS AND TOURIST OFFICES

