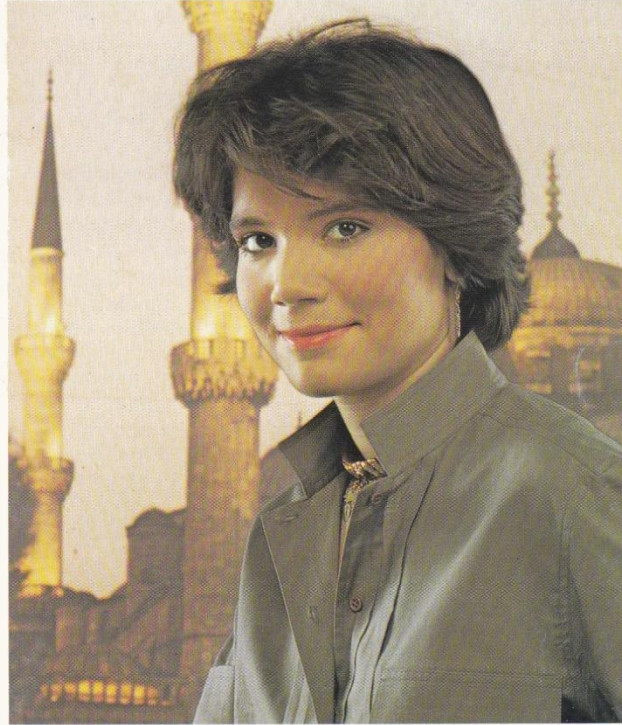


**ANKARA
ISTANBUL**



/// SAS



Code numbers in the Ankara section of this booklet refer to the above map.



Thus (H7) is located where lines drawn from "H" and "7" cross each other.

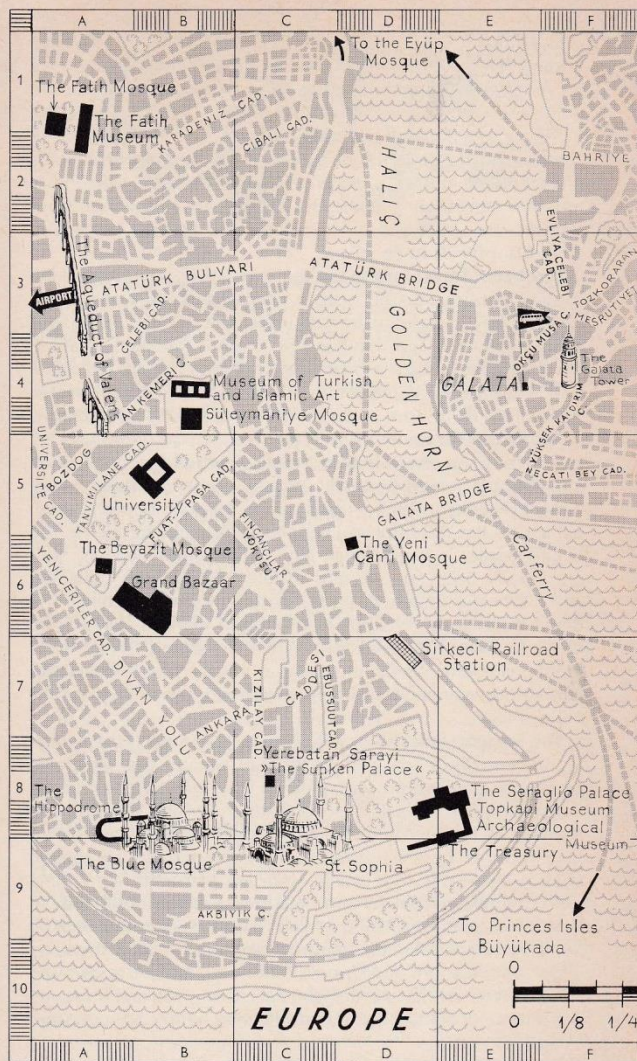
Interesting sights in Ankara

- (F3) The Citadel and the Hittite Museum.
- (E3) Temple of Augustus.
- (E7/8) Mausoleum of Atatürk.
- (L9/10) Atatürk's House.

Distance from city center to airport: 32 km (20 miles).

Useful addresses

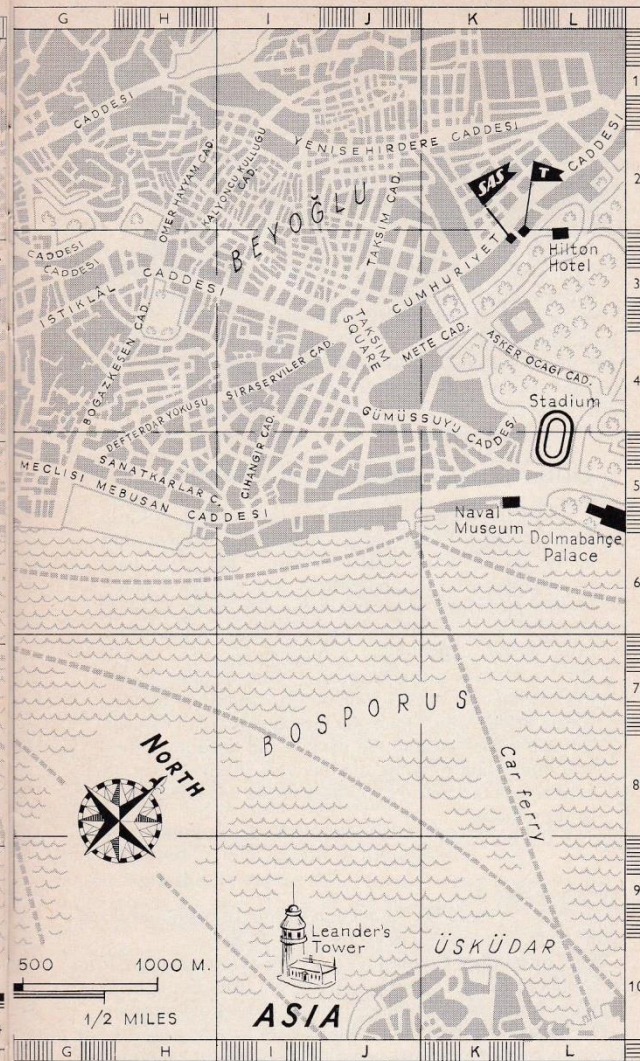
-  **SAS Ticket Office:**
127 Atatürk Bulvarı, 4th floor (H7).
Tel. 17 86 00 and 25 51 90.
-  **Turkish Government Tourist Office:**
(Basın Yayın Turizm Vekaleti)
33 Gazi Mustafa Kemal Bulvarı (F7).
Tel. 29 29 30, ext. 95.



Code numbers in the Istanbul section of this booklet refer to the above map.

Interesting sights in Istanbul

- | | |
|---|---|
| (A2/3/4) The Aqueduct of Valens. Nearby are the Fatih Mosque, the Fatih Museum, and the Municipal Museum. | (C8) The Sunken Palace. |
| (A6) The Beyazit Mosque. | (E8) The Seraglio Palace; Topkapi Museum, Treasury, Archaeological Museums, and the Seraglio Gardens. |
| (B6) The Grand Bazaar. | (C9) St. Sophia. |
| (B4) The Süleymaniye Mosque, and the Museum of Turkish and Islamic Art. | (D6) The Yeni Cami Mosque. |
| (B7) The Constantine Column. | (F4) The Galata Tower. |
| (B9) The Blue Mosque (Sultan Ahmed), and the Hippodrome. | (J3) Taksim Square. |
| (C1) The Eyüp Mosque. | (L5) The Dolmabahçe Palace. |
| | (K5) The Naval Museum. |
| | (J4) Istanbul Opera House. |



Thus (K3) is located where lines drawn from "K" and "3" cross each other.

Useful addresses

- SAS** **SAS Ticket Office:**
Cumhuriyet Caddesi, Altınbakkal (K3).
Tel. 46 60 75. (Office hours: 09.00 to 18.00 hrs.)
- T** **Turkish Government Tourist Office:**
Hilton Arcade, Altınbakkal (L3) (near the SAS Office).
Tel. 48 63 00, 48 68 64. (Office hours: 09.00 to 18.30 hrs.)
- S** **Şişhane Air Terminal (E4)**

Distance from city center to airport: 23 km (15 miles).

EuroClass means more



More room for your knees. More room for your legs. More time to relax. Separate check-in. Seat selection and special Scanorama Lounges. More for your money – with free drinks and improved meal service. SAS EuroClass is for our full-fare Economy passengers on inter-Scandinavia and European services.

Welcome aboard.

***SAS*
EuroClass**