



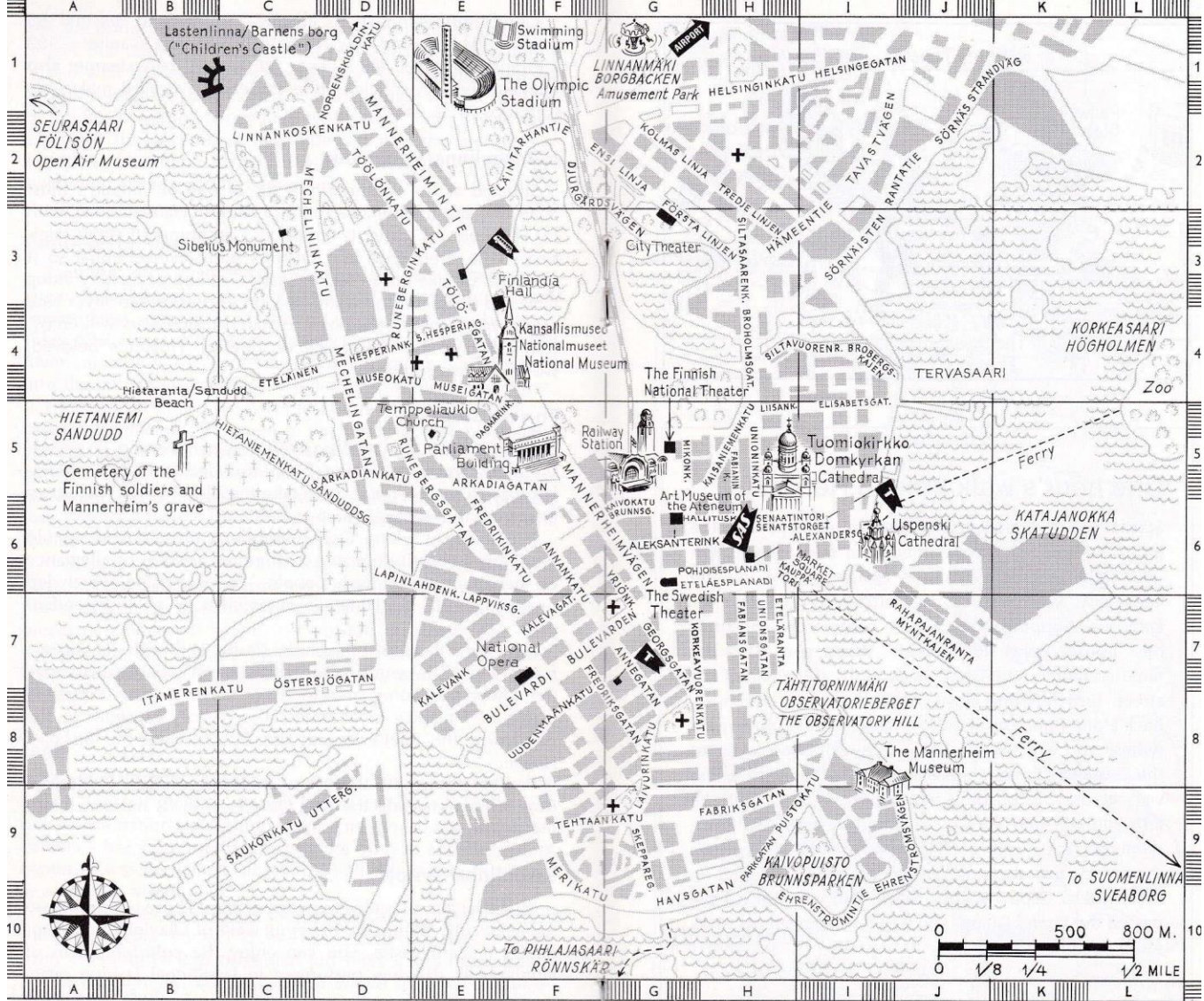
SAS CITY PORTRAIT

Helsinki

Helsingfors

SAS SCANDINAVIAN AIRLINES





Code numbers in this booklet refer to the above map. Thus (H6) is located where lines drawn from "H" and "6" cross each other.

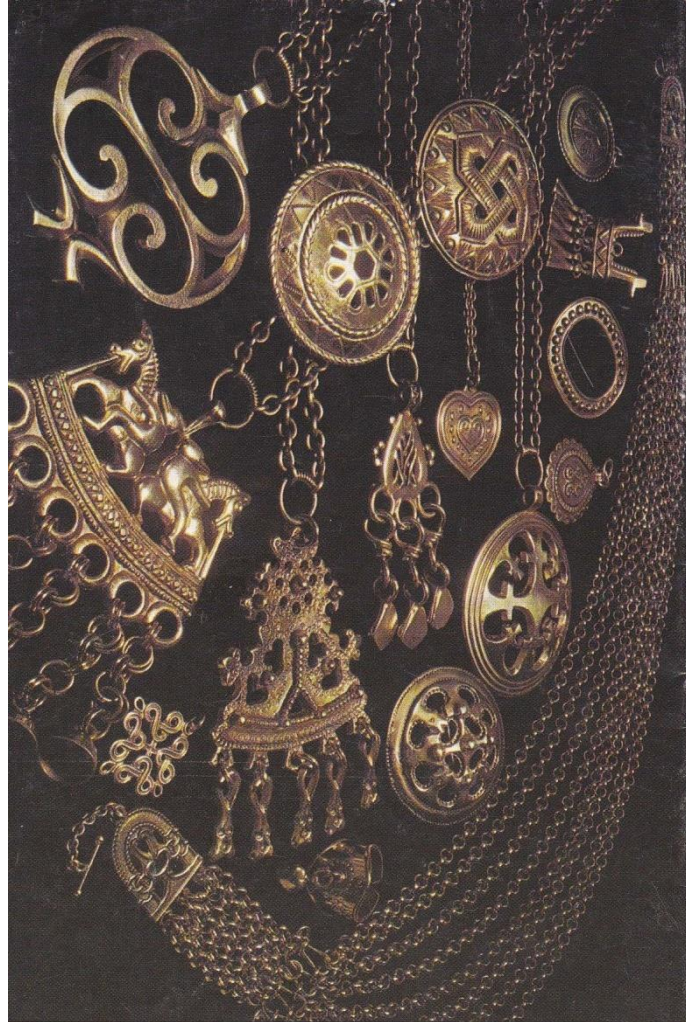
Interesting sights in Helsinki

- | | |
|-------------------------------------------------------------------------------|------------------------------------------------------------------------------|
| (G6) Art Museum of the Atheneum. | (H8) Tähtitorninmäki (The Observatory Hill). |
| (G5) The Finnish National Theater. | (F5) Eduskuntatalo (Parliament Building). |
| (H6) Senaatintori (The Senate Square). | (E4) Kansallismuseo (The National Museum). |
| (I6) Departure point for the Zoo (on the Island of Korkeasaari). | (E1) The Olympic Stadium. |
| (C3) Sibelius Monument. | (B5) Sankarihautaus (Cemetery of the fallen and Marshal Mannerheim's Grave). |
| (E5) Temppeliaukio Church. | (E3) Finlandia Hall. |
| (I6) Market Square (Kauppatori) (with the Presidential Palace and City Hall). | |
| (I8) The Mannerheim Museum. | |
| (F7) The National Opera. | |

Useful addresses

-  **SAS Ticket Office:** 23 Pohjoisesplanadi (H6). Tel. 13 443. Booking tel. 17 56 11. SAS Airport Office, tel. 82 19 04.
-  **Air Terminal:** Finnair, 21 Töölönkatu (E3). Tel. 41 04 11.
- Hotel Booking Center:** Railway Station (G5). Tel. 11 133.
- The City Tourist Office:** 19 Pohjoisesplanadi (H6). Tel. 16 23 217 and 17 40 88.
-  **Tourist Information Office:** Finnish Travel Association 1 Kalevankatu (F6). Tel. 64 30 26.

Distance from city center to airport: 12 miles (19 km).



Based on archaeological finds, and truly reflecting the history and culture of Finland, the traditional line of jewelry is the result of the cooperation between the ornamental smiths of ancient times, and the skilled craftsmen of Kalevala Koru. Modern design jewelry, hand-made ceramic wall hangings and gift articles are also available at our shop.

Kalevala Koru
KESKUSKATU 4, HELSINKI

