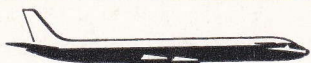


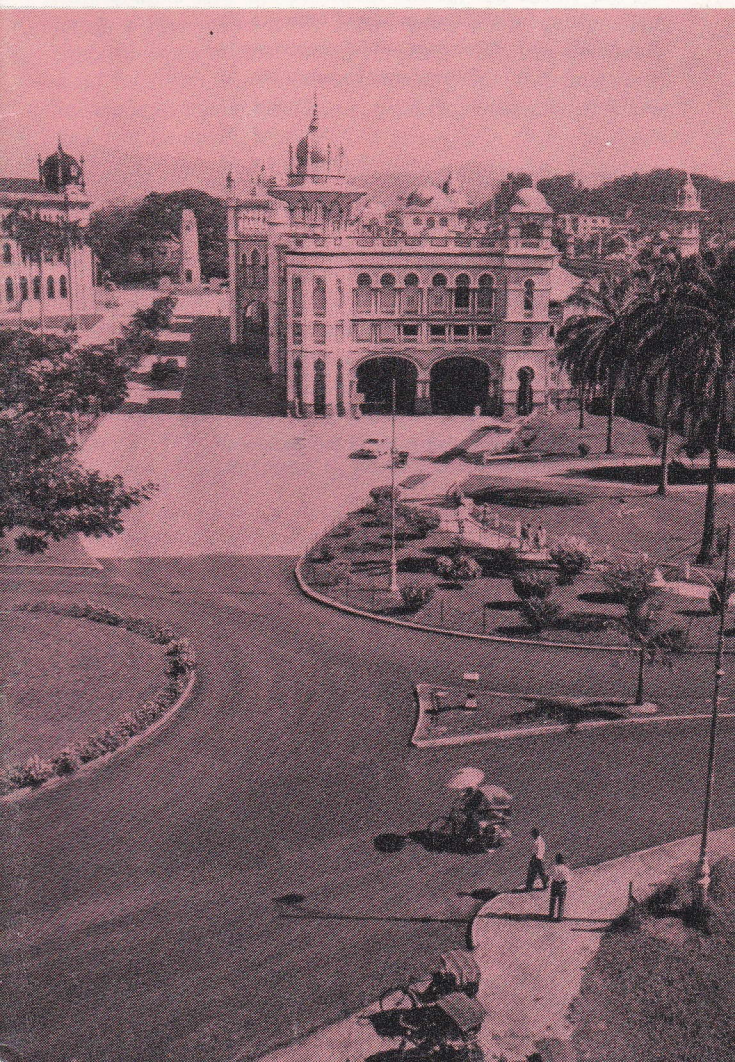


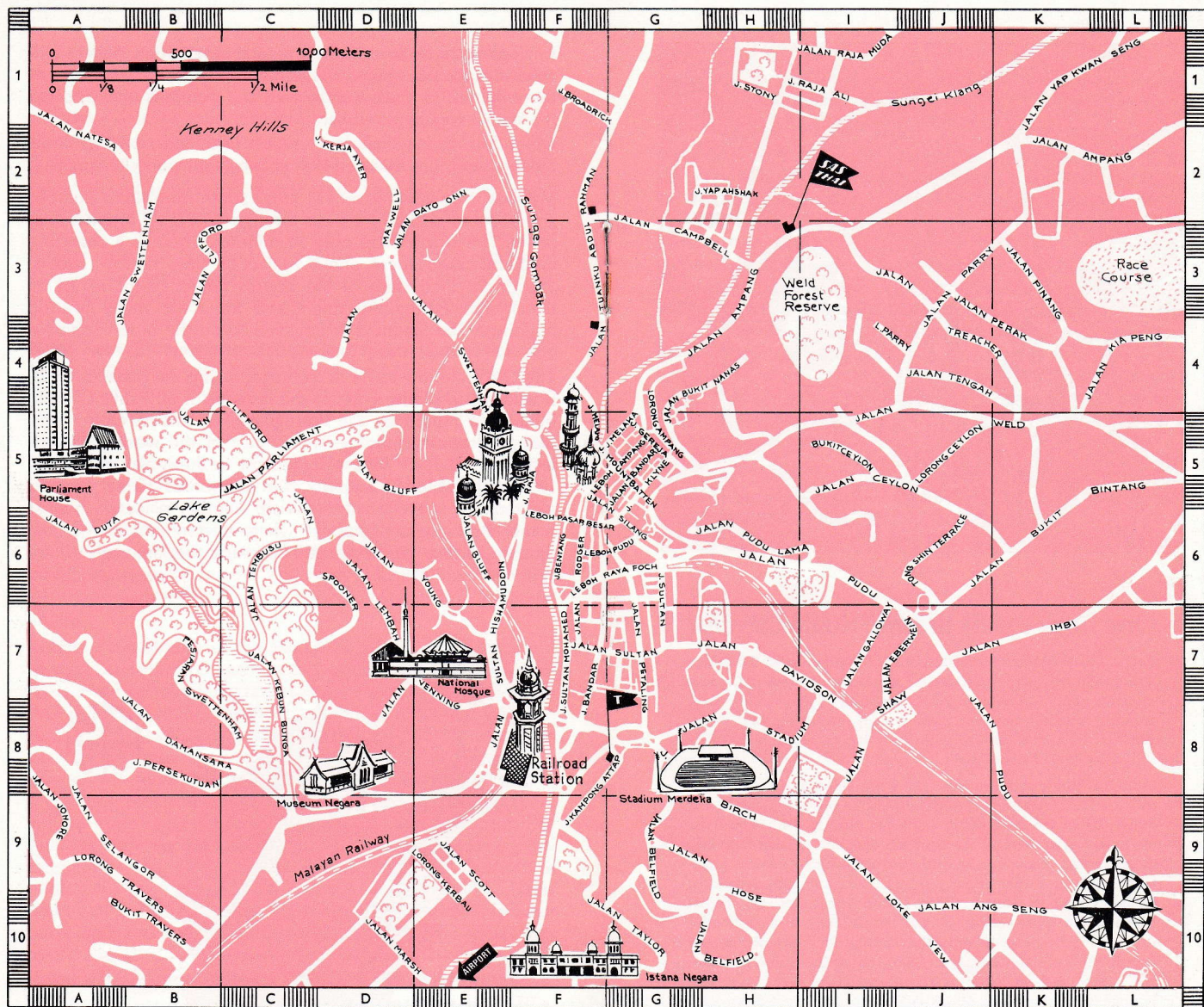
Kuala Lumpur

SAS CITY PORTRAIT



SAS SCANDINAVIAN AIRLINES





Code numbers in this booklet refer to the above map. Thus (H3) is located where lines drawn from "H" and "3" cross each other.

Interesting sights in Kuala Lumpur

- | | |
|----------------------------|------------------------|
| (B/C5/8) Lake Gardens. | (F/G10) Istana Negara. |
| (A5) Parliament House. | (F/G6/7) China Town. |
| (C8) National Museum. | (F8) Railway Station. |
| (E7) National Mosque. | (H8) Merdeka Stadium. |
| (J2) National Art Gallery. | |

Useful addresses



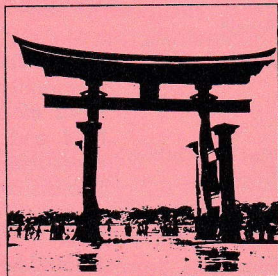
SAS and THAI International Ticket Office: Denmark House, 84 Jalan Ampang. Tel. 8 03 61.



Tourist and Information Office: Police Co-operation Building, Jalan Suleiman. Tel. 8 98 37.

SAS SCANDINAVIAN AIRLINES

**Two leading
airlines**



make Eastern travel easy

SAS and Thai International provide your travel comfort both to and around the East.

Fly SAS DC-8 Royal Viking jet – from any quarter of the globe. Choose the SAS Trans-Asian Express, the straight way between Europe and South East Asia (Bangkok, Singapore, Kuala Lumpur, Djakarta and Manila) or the Trans-Orient, the traditional way from key cities in Europe and the Middle East to Karachi, Calcutta, Bangkok and on to Manila and Tokyo, or fly the SAS-pioneered Trans-Polar Shortcut between Europe and Japan.

SAS is your link, too, with THAI International and its famous Royal Orchid Service, with an all-jet network joining 18 major Asian cities.

Edited by Alan C. Lovejoy

© World-copyright 1969 SCANDINAVIAN AIRLINES SYSTEM 982546/6904
No part of this publication may be reproduced without permission in writing from SAS. All prices quoted within are subject to change without notice, and in event of such a change, SAS can bear no responsibility.