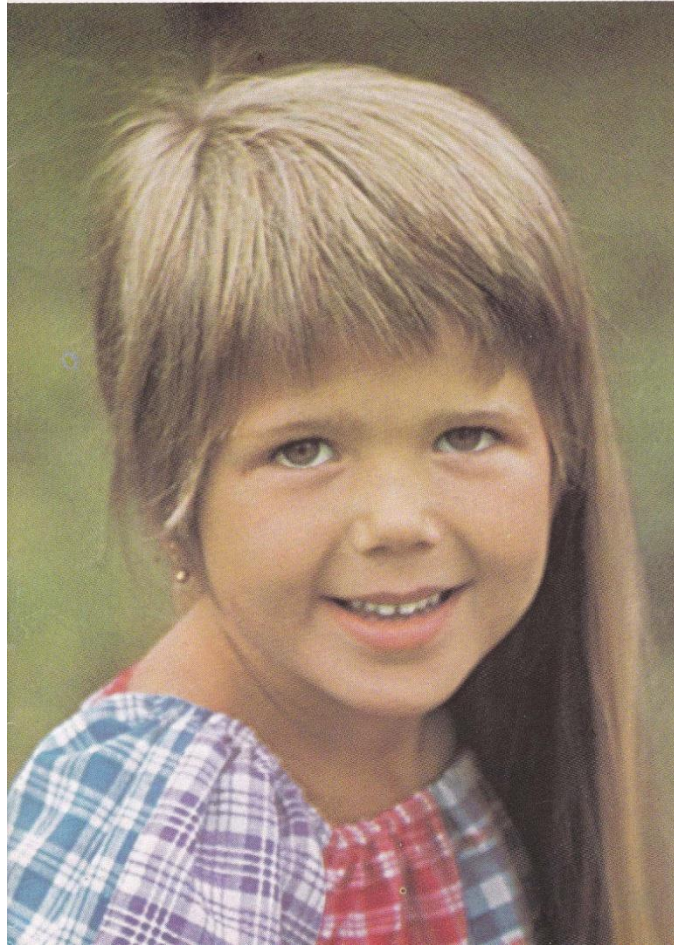


Prague

SAS City Portrait








Code numbers in this booklet refer to the above map. Thus (H6) is located where lines drawn from "H" and "6" cross each other.

Interesting sights in Prague

- | | |
|--|---|
| (H4) The Powder Tower. | (D4) The Malá Strana Quarter. |
| (I6) Main Railroad Station. | (B5) Petřín Hill (outlook tower). |
| (I7) National Museum. | (A5) Strahov Monastery (library and museum). |
| (G4) Old Town Square. | (B3) The Sternberg Palace (National Gallery). |
| (F3) Old Jewish Town (Ghetto). | (B3) Hradčany Castle. |
| (F4) Clementinum (University Library). | (E8) Starting-point for river cruises. |
| (E4) Charles Bridge. | (G4) Charles University. |
| (E6) The National Theater. | |
| (E4) The Certovka Quarter. | |

Useful addresses

-  **SAS Ticket Office:**
61 Štěpánská (H6), Prague 1. Tel. 22 81 41-43.
Open: Monday-Friday 8.30 a.m. to 5 p.m., Saturday and Sunday closed.
-  **CSA Air Terminal:**
25 Revoluční Prague (H2). Tel. 2146.
CSA Ticket Office, 1 Revoluční Prague (H3).
-  **Tourist Information Office:**
Cedok, 18 Na Příkopě (H5), Prague 1. Tel. 22 34 40.
- Distance from city center to airport: 10½ miles (17 km).

Ask SAS for a date!

The SAS International Events Service can supply you with comprehensive details of over 1,000 major events all over the world.

Our close cooperation with hundreds of organizations and fairs enables us to keep a world business, professional and cultural diary. We can even offer information about functions which will take place in five years' time!

Ask your nearest SAS office for more details.

Let SAS help you plan ahead.

