

AIR FRANCE

WINTER TIMETABLE 1938-9

Reserve your Seat with:



LONDON: Central Booking Office: 52, Haymarket, S.W.1. Telephone: WHITE-HALL 9671-1-2-3-4-5-6-7. Telegrams: AIRFRANS, LESQUARE, LONDON. Cables: AIRFRANS, LONDON. Terminal Station: (60) Dorchester Hotel, Park Lane. Telephone: Day and Night — MAYFAIR 4101. — Croydon Aerodrome: Telephone: CROYDON 3444-5-6. Telegrams: AIRFRANS, CROYDON.

PARIS: Central Booking Office: 2, Rue Scribe. Telephone: OPERA 41-00. Telegrams: AIRFRANSAG, PARIS.—Head office: 2, Rue Marbeuf. Telephone: ELYSEES 20-60, 38-95. Telegrams: AIRFRANS, PARIS.—Le Bourget Aerodrome: Telephone: BOTZARIS, 71-14. Telegrams: FRANSAIR.—Passenger Departure Station (35) Place Lafayette. Telephone: TAITBOUT 48-54.

Ajaccio. IA. Air France Hydrostation. Tél.: 263. Télégr.: "Airfrans, Ajaccio." C. No car service.

Algiers. IC. Air France, 4 Bld. Carnot (20). Tél.: 4-74. Télégr.: "Airfransag, Algiers." A. Agha. Tél.: 27-98.

Barcelona. IC. Air France, Calle Lauria 45(90). Tél.: 16936. Télégr.: "Airfrans, Barcelona." A. Prat de Llobregat. Tél.: 7.

Belgrade. IC. Air France, 32, Knez Mihajlova (45). Tél.: 20406-25312-23096. Télégr.: "Airfrans Belgrade." A. Zemun. Tél. 4193. Télégr.: Airfrans, Zemun.

Bucharest. C. Air France, 2, rue Clémenceau (60). Tél.: 356-15. Télégr.: "Airfrans Bucarest." A. Banăsa. Tél.: 357-33.

Budapest. IC. Air France, Vorosmarty Ter 2 (40). Tél.: 1-827-16, 1-827-23. Télégr.: "Airfrans Budapest." A. Budaon. Tél.: 2-969-27.

Cannes. IC. Air France, 2, Place des Iles (20). Tél.: 932-08. Télégr.: "Airfrans, Cannes." A. Aeroport de Cannes. Tél.: 907-76.

Casablanca. IC. Air France, 19 rue Nolly (30). Tél.: 08-75. Télégr.: "Airfrans Casablanca."

Dakar. IC. Air France, 1 rue Parent (45). Tél.: No. 4. Télégr.: "Airfrans, Dakar." A. Ouskam.

Geneva. I. Swissair Aeroport. Tél.: 21/505. Télégr.: "Swissair Geneva." C. 16, Place de Cornavin (25). A. Cointrin.

Genoa (Italy). IC. C.I.T., 4, Via Carlo Felice (50). Tél.: 23102 and 23103.

A—Airport or Seaplane Station.

H—Hotels used on the Far East Route.

Télégr.: "Aetopass, Genoa." A. Hydrostation "28 Octobre." Tél.: 61940.

Lyons. I. Air France Aeroport. Tél.: Parmentier 93-36. Télégr.: "Airfrans Lyons." C. Air France, 20 rue de la Bourse (40). Tél.: Franklin 5465. A. Bron.

Marseilles. IC. Air France, l'Office National de Tourisme, 4, La Canebière (70). Tél.: Colbert 34-97. Télégr.: "Airfrans Marseilles." A. Marignane. Tél.: Colbert 9677 89.12. H. Hotel de Noailles.

Prague. IC. Air France, na Prikope 10 (60). Tél.: 218-41-218-42. Télégr.: "Airfrans Prague." A. Ruzyně. Tél.: RR 25-71.

Rome. IC. Stazione Aerea Piazza Esedra (45). Tél.: 43404. Télégr.: "Aeropass, Rome." A. Littorio.

Tangier. IC. Wagon-lits Cook, rue du Statut (60). Tél.: 0-83.

Tunis. IC. Air France, 46, Avenue Jules-Ferry (45). Tél.: 49-60. Télégr.: "Airfrans Tunis." A. Hydrostation. Tunis-Carthage. Tél.: 46-58 Tunis.

Venice. IC. C.I.T./Avio Linea San Nicolò Lido (30). Tél.: 60.255 and 60.262. Télégr.: Alerea Venice. A. San Nicolò del Lido.

Vienna. IC. Air France Karnterring, 7 (40). Tél.: R. 20-3-93. Télégr.: "Airfrans Vienna." A. Aspern. Tél.: F 22-203. Klappe 7.

Warsaw. IC. Air France, Lot Jerozolimski 35 (30). Tél.: 85813-80850-80860. Télégr.: Odlot Varsovie, A. Okęcie. Tél.: 563-00.

Zurich. IC. Swissair Bahnhofplatz 7 (40). Tél.: 73-133. Télégr.: Air-ticket, Zurich.

C—Departure Stations.

I—Information and Reservations.

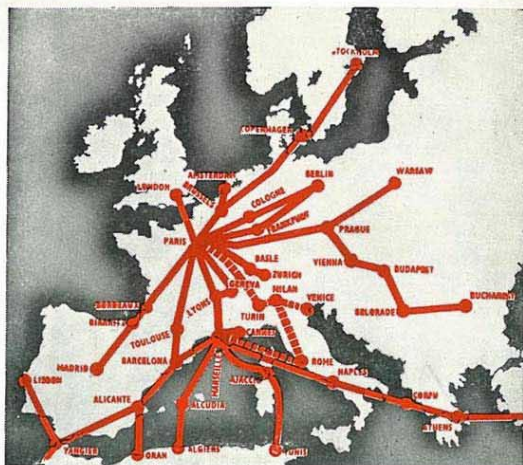
The figures shown in brackets indicate the time in transit to and from Aerodromes. A full list of the Company's addresses may be obtained from the General Timetable.

AIR FRANCE



WINTER
TIME-TABLE
1938-1939
SECOND EDITION

SUBJECT TO ALTERATION WITHOUT NOTICE



STOP PRESS

AIR FRANCE

WINTER 1938-9

2nd October to 25th March



SECOND EDITION

INDEX TO PASSENGER SERVICES

	Page		Page
LONDON TO		LONDON TO	
PARIS	7	CASABLANCA, LISBON ...	16
MARSEILLES & CANNES ...	9	NORTH AFRICA	13
SWITZERLAND	11 & 12	WEST AFRICA	23
ITALY	17	FAIR EAST	21
PRAGUE AND CENTRAL		SOUTH AMERICA	19
EUROPE	15	PARIS TO	
		BELGIUM, HOLLAND &	
		GERMANY	18

INFORMATION FOR PASSENGERS FLYING ON EUROPEAN SERVICES

RESERVATION.—Please book your seat as early as possible with your Travel Agent or at any of the Company's Offices. A return ticket will save you money, but be sure you make your homeward reservation early as the service is always booked to capacity.

RESERVATIONS BY TELEGRAM AND TELEPHONE.—If you reserve a seat by telegram, please send a telegraphic remittance for fare. Seats cannot be held against telegrams or telephone messages to the exclusion of other passengers who are ready to take up tickets.

BAGGAGE.—You are allowed 33 pounds (15 kilos) of free baggage on the European services. Then you pay excess at rates shown in this booklet. You can send luggage in advance to Geneva, Marseilles or Cannes, at 1/- per kilo. You may only carry personal effects and must put your camera in your luggage.

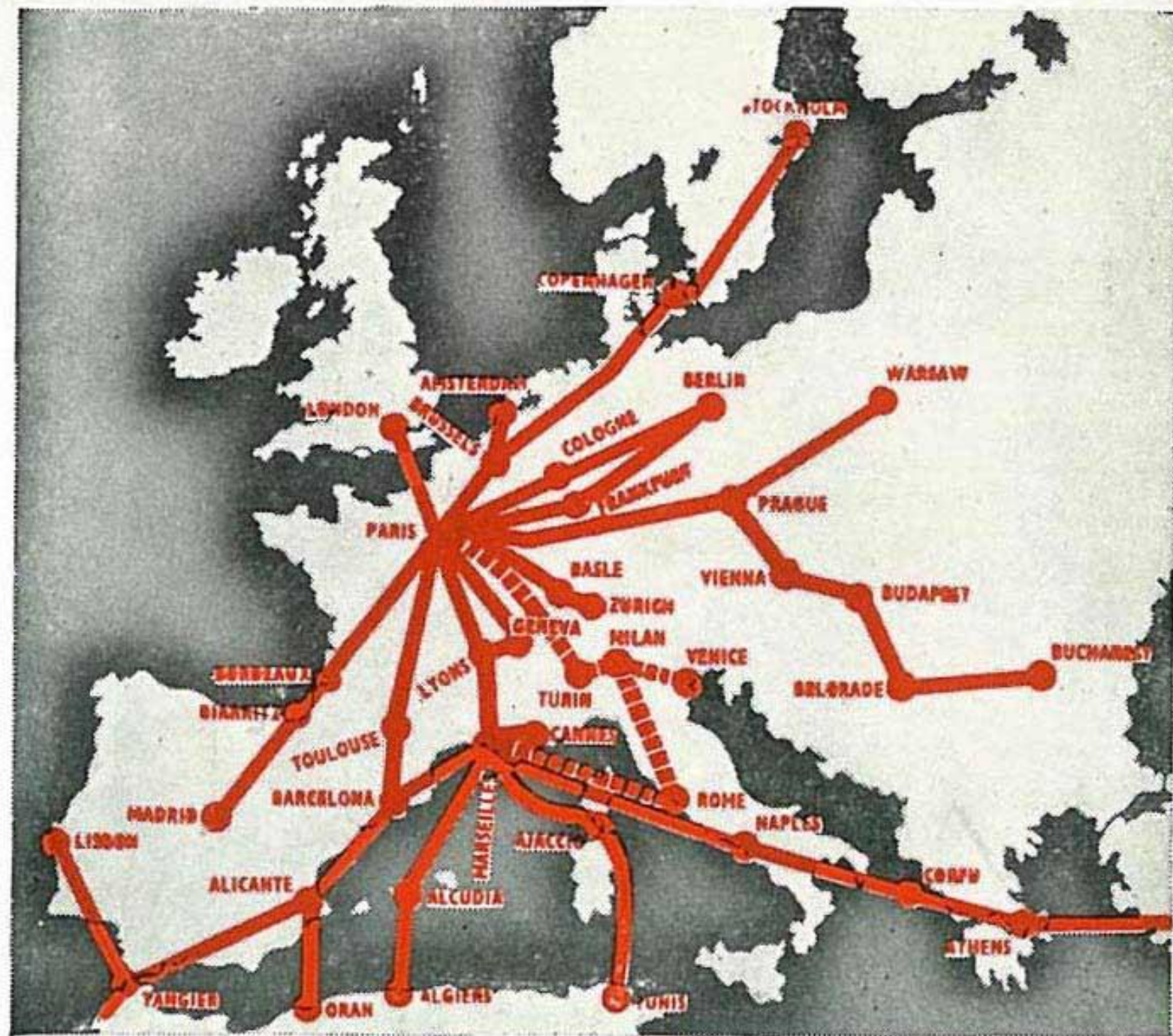
CLOTHING.—Wear the same clothes you would for a car journey. The cabins are kept at a comfortable temperature and are enclosed. There is a toilet on each liner.

MEALS EN ROUTE.—The time-tables are arranged to allow you time to take a meal at one of the intermediate aerodromes. Or you can get light refreshments from the steward on most services.

CARS TO THE AERODROMES.—Both you and your baggage are carried free of charge from the town station to the Airport unless the Airport is in the town.

CHILDREN.—When accompanied by an adult, and if under 3 years of age, children not having a separate seat are carried at the rate of 10 per cent. of the ordinary tariff. They have no free baggage allowance. Children under 3 years for whom a separate seat has been reserved, and children aged from 3 to 7 years, are carried for half fare. They have the normal baggage allowance on European services. Over 7 years, the full fare is paid. Boys under 12 and girls under 16 who are not accompanied by their parents are only carried provided they produce a declaration from their parents giving them permission and releasing the Company from all liability.

PASSPORTS.—Be sure your passport is up-to-date and properly vised. Your Agent or the Company will give you advice on this subject.



AIR FRANCE

introduces new to European Services

London-Paris

CONFORMING with its policy that Air France Aircraft shall be of the best and most up-to-date, the Company has pleasure in announcing the Marcel Bloch 220 for its Winter services on the London-Paris-Marseilles and other European routes.

The prototype of this Air Liner was flying with the Company for a year before being used for passenger transport, and the final results of intense experiment under actual winter service conditions have been incorporated into the fleet which is now on service.

The Marcel Bloch 220 has a total of 1780 h.p. Its top speed is 212½ m.p.h., and at 60% throttle, it cruises at 200 m.p.h. It has a range of 620 miles, almost three times the length of the London-Paris route and an all-up weight of approximately ten tons.

(Continued from previous page)

NO PASSPORT TICKETS.—Special "no passport" tickets are issued for week-end return journeys on the London-Paris route. They are valid from Friday to Tuesday and available to British, French and Belgian subjects.

HOTEL IN PARIS.—On the overnight service to Marseilles, Cannes, Algiers, Tunis and Corsica a room (with private bath) is reserved for you at a first-class Hotel in Paris, adjoining the Place Lafayette Departure Station. This is very convenient for the early start next morning and is free of charge.

DOGS, etc.—accompanying passengers must be in a crate or basket which is weighed on departure; the charge is as for ordinary excess baggage, plus 50 per cent.

INSURANCES.—Most Assurance Companies will include air travel on life policies free of charge. Personal insurance and baggage insurance may, however, be arranged at any of the Company's offices on request, at low premiums.

SEASON TRAVEL VOUCHERS.—Regular travellers may purchase voucher Books from Air France giving facilities for travel on any of the principal European air services at reduced fares. Details on application.

BULK TRAVEL VOUCHERS.—For the convenience of companies whose bona-fide employees use the air services on business, Bulk Travel Vouchers are available at reduced rates and may be used on any of the principal Air Lines of Europe. Details from Air France or its Agents.

CONDITIONS OF TRANSPORT.—An extract from the Company's Regulations for the carriage of passengers and baggage is contained in the passenger ticket. The full regulations may be seen at any of the Company's offices.

ALTERATIONS.—Time tables, fares and the types of aeroplanes and seaplanes used are liable to change without notice.

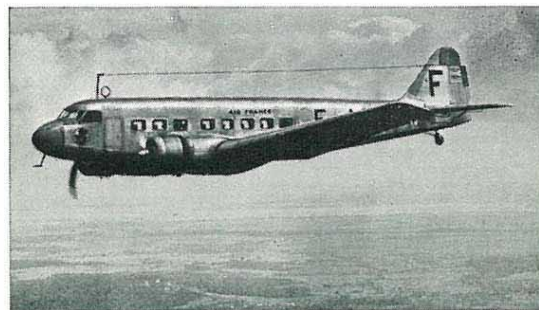
100,000 francs insurance for 5 francs ! By AIR FRANCE from London to Paris.

200 m.p.h. Aircraft

. . . .

in 75 minutes !

With the use of this type the scheduled time of flight from London to Paris is reduced to 75 minutes and since this is a conservative timing, the journey often takes less.



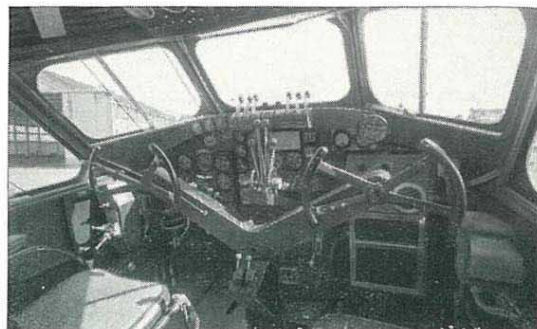
One of the new 200 m.p.h. Bloch Air Liners flying on the Air France London-Paris service, reducing the journey to 1½ hours. From this picture it will be noted that an unobstructed view is obtained from the cabins.

When the London-Paris service started in 1919, the flight usually took three hours and often over four. With a 1½ hour schedule the Bloch liners are by far the fastest all metal machines on the route.



Every passenger seat on the Bloch 220 is against a window. Individual ventilation and light controls are above each seat.

A pleasant feature of these air-liners is that being low winged monoplanes, the sunshine comes right into the cabins unobscured by an upper wing. The passenger



The business end of the Bloch 220. The first and second Pilots have an exceptionally wide view. The new type, which is easy to handle, is fitted with the most modern navigation instruments.

cabin is high in the fuselage so that each passenger has a clear forward view and each of the Pullman armchairs is against a window. The silencing has been brought to such a pitch of perfection that these machines are reputed to be the quietest in existence.

The Steward serves light refreshments from a well-stocked bar, where most drinks from Champagne to iced draught Lager may be obtained. On some routes a full course luncheon is served. Details on application.



The Steward serves light refreshments from a well stocked bar.

PARIS

Fastest service in $1\frac{1}{4}$ hours flight on the new 200 m.p.h. Bloch Air Liners.

LONDON—PARIS

			Daily (200)	Wkdys. (201)	Daily (202)	Wkdys. (203)
LONDON						
Dorchester Hotel	dep. 8.00	10.00	12.30	*14.30
Croydon Airport	9.00	11.00	13.30	*15.30
PARIS						
Le Bourget Airport	arr. 10.15	12.15	14.45	*16.45
Place Lafayette	10.50	12.50	15.20	*17.20

* From 1st March.

Luncheon, price 4/-, is served on the 13.30 service from Croydon. Please order in advance.

PARIS—LONDON

			Daily (200)	Wkdys. (201)	Daily (202)	Wkdys. (203)
PARIS						
Place Lafayette	dep. 8.25	10.25	12.55	*14.55
Le Bourget Airport	9.00	11.00	13.30	*15.30
LONDON						
Croydon Airport	arr. 10.15	12.15	14.45	*16.45
Dorchester Hotel	11.15	13.15	15.45	*17.45

* From 1st March.

Luncheon, price 25 Fcs., is served on the 13.30 service from Le Bourget. Please order in advance.

FARES

Paris "No Passport" tickets for week-end can be obtained by passengers of British, French and Belgian nationalities valid outwards Friday, Saturday, Sunday: homewards Friday to Tuesday.

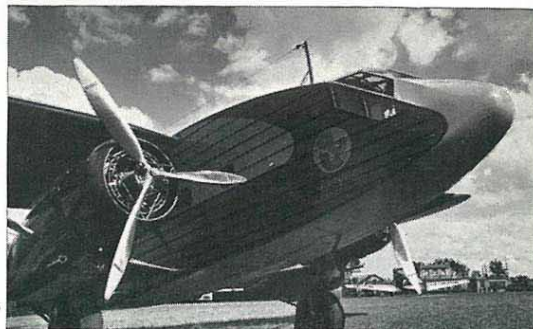
LONDON TO PARIS

Single	£4 10 0
15 Days return	£7 10 0
60 Days return	£8 0 0
Mid-week return (out Mon. Tues. Wed.—home Wed. Thur. Fri.)	£6 6 0
Excess baggage per kilo...			6d.

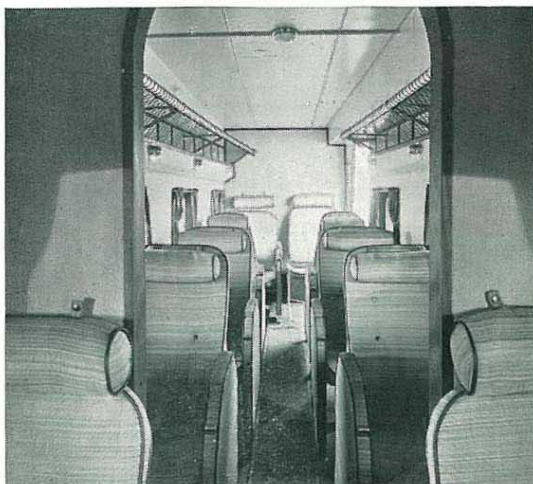
PARIS TO LONDON

Single	700 Fcs.
15 Days return	1125 Fcs.
60 Days return	1215 Fcs.
Week-end return (Friday to Tuesday)	875 Fcs.
Excess baggage per kilo	4 Fcs.

"... Undoubtedly the reason why more passengers are flying by Air France is that the new Bloch 220's not only carry them faster, quieter, and in more comfort, but that the service from start to finish is so good. There is individual attention to Air France passengers."—Passenger's Comment.



The Potez 62 which flies on the Lyons-Geneva and Central European Services of Air France.



The Potez 62 has two cabins and carries fourteen passengers in Pullman comfort.



The Golden Clipper type of Air Liner is now transferred from the London-Paris service to the Marseilles-Cannes line.

RIVIERA

LONDON—MARSEILLES—CANNES

			Daily (200)	Wkdys. (201)	Daily (202)	Wkdys. (203)
LONDON						
Dorchester Hotel	dep. 8.00	10.00	12.30	*14.30
Croydon Airport	9.00	11.00	13.30	*15.30
PARIS						
Le Bourget Airport	arr. 10.15	12.15	14.45	*16.45
			Wkdys. (246)	Daily (245)	Thurs. & Sun. (247)	
			11.00	8.00	7.00	
LYONS						
Bron Airport	arr. 12.45	9.35		
	dep. 13.00	9.45		
ORANGE (Mail call only)	arr. 10.30	10.35		
	dep. 14.05	10.55		
MARSEILLES						
Marignane Airport	arr. 14.05	10.55	9.40	
			Wkdys. (253)	Sats. Only (254)		
			14.20	11.20		
CANNES						
Mandelieu Airport	arr. 15.05	12.05		
2, Place des Iles	arr. 15.25	12.25		

* From 1st March.

† Does not call on Sundays.

Passengers flying on the overnight service from London to the Riviera are accommodated free of charge (room and bath) at a first-class Hotel near the Paris Departure Station.

CANNES—MARSEILLES—LONDON

			Wkdys. (253)	Mon. Only (254)	
CANNES					
2, Place des Iles	dep. 8.40	11.55	
Mandelieu Airport	dep. 9.00	12.15	
MARSEILLES					
Marignane Airport	arr. 9.45	13.00	
	Wkdys. (246)	Daily (245)	Tues. & Sat. (247)
	10.00	13.15	12.50
ORANGE (Mail call only)	arr. 13.35	13.40	
	dep. 11.05	14.25	
LYONS					
Bron Airport	arr. 11.20	14.35	
PARIS					
Le Bourget Airport	arr. 13.05	16.10	15.30
	Daily (202)	Daily (203)	
	13.30	9.00	
LONDON					
Croydon Airport	arr. 14.45	10.15	
Dorchester Hotel	15.45	11.15	

† Does not call on Sundays.

FARES

LONDON to	Single	60 Days return	Excess Baggage per kilo
	£ s. d.	£ s. d.	s. d.
PARIS	4 10 0	8 0 0	0 6
LYONS	7 6 0	13 3 0	1 1
MARSEILLES	10 2 0	18 4 0	1 6
CANNES	10 18 0	19 12 0	1 8

WINTER SPORTS

4 SUGGESTIONS

1. FRENCH RESORTS

The Mont Blanc District, Chamonix, Megeve, etc. Easy journey same day from London via Geneva. Good snow and a cheap franc!

2. SWISS VALAIS DISTRICT

St. Cergue, Villars, Gstaad, Caux, Les Avants, Chateau d'Oex, Saanenmoser, Zweisimmen, etc.

Good snow, long hours of sunshine, easy connection. Same day from London via Geneva.

3. BERNESE OBERLAND

Air France and Swissair are co-operating this year in a new service from Paris to Zurich, with rail connection to the Bernese Oberland.

This will be useful to English provincial passengers who may take the afternoon plane from London to Paris and fly on to Zurich next morning. Also for London visitors who find an early start inconvenient. The service via Paris costs the same as the through services, and, tickets being interchangeable, passengers may, by arrangement, return from Zurich to London on the direct service of Swissair or Imperial Airways.

4. THE ENGADINE

The overnight service from London to Zurich via Paris also provides a useful connection to the Engadine (see "Bernese Oberland"). In addition, Swissair are operating an air service in connection from Zurich to St. Moritz.

SWITZERLAND

LONDON—GENEVA

		Air France		Daily (200)	
LONDON	Dorchester Hotel	dep.	8.00
	Croydon Airport	"	9.00
PARIS	Le Bourget	"	...	arr.	10.15
	"	"	...	dep.	Wkdys. (246) 11.00
LYONS	Bron	"	...	arr.	12.45
	"	"	...	dep.	Wkdys. (251) 13.05
GENEVA	Cointrin	"	...	arr.	14.45
	16, Place de Cornavin	"	15.10

CONNECTING TRAINS from GENEVA

GENEVA	Cornavin Station	dep.	16.54
	St. Cergue	arr.	19.05
	Lausanne	"	17.42
	Vevey	"	18.15
	Montreux	"	18.23
	Aigle	"	18.39
	Villars	"	20.04
	Caux	"	18.59
	Les Avants	"	19.02
	Chateau d'Oex	"	19.55
	Gstaad	"	20.19
	Saanenmoser	"	20.37
	Zweisimmen	"	20.57
	Champery	"	20.17
	Berne	"	20.22
	Ste. Croix les Rasses	"	20.28
	Leysin	"	19.42
	Diablerets	"	20.03
	Montana (Crans S. Pierre)	"	20.41

Connecting train and car services to Chamonix, Cluses, Morzine, Salanches, Comblaux and Megeve.

GENEVA—LONDON

CONNECTING TRAINS to GENEVA

GENEVA	Montana (Crans S. Pierre)	dep.	—
	Diablerets	"	7.22
	Leysin	"	7.37
	Ste. Croix les Rasses	"	7.07
	Villars	"	7.13
	Aigle	"	7.13
	Berne	"	7.25
	Champery	"	6.59
	Zweisimmen	"	6.10
	Saanenmoser	"	6.32
	Gstaad	"	6.48
	Chateau d'Oex	"	6.02
	Les Avants	"	6.55
	Caux	"	7.04
	Montreux	"	7.37
	Vevey	"	7.49
	Lausanne	"	9.04
	St. Cergue	"	6.30
GENEVA	Cornavin Station	arr.	9.53

Air France

		Wkdys. (251)	
GENEVA	16 Place de Cornavin	...	dep.
	Cointrin Airport	...	"
LYONS	Bron	"	arr.
	"	"	dep.
PARIS	Le Bourget	"	arr.
	"	"	dep.
LONDON	Croydon	...	arr.
	Dorchester Hotel	...	"

FARES

		Single	15 Days return	60 Days return	Excess Baggage per kilo
		£ s. d.	£ s. d.	£ s. d.	s. d.
LONDON to	PARIS	4 10 0	7 10 0	8 0 0	0 6
LYON	GENEVA	7 6 0	—	13 3 0	1 1
GENEVA	—	7 10 0	12 15 0	13 10 0	1 1

SWITZERLAND

LONDON—ZURICH—ST. MORITZ—BERNE

Air France/Swissair

			Daily (200)	Wkdys. (201)	Daily (202)	Wkdys. (203)
LONDON						
Dorchester Hotel	...	dep.	8.00	10.00	12.30	*14.30
Croydon Airport	...	"	9.00	11.00	13.30	*15.30
PARIS						
Le Bourget Airport	...	arr.	10.15	12.15	14.45	*16.45
"	...	dep.	9.35	11.01		
ZURICH						
Dubendorf Airport	...	arr.	12.45			
Bahnhofplatz 7	...	"	13.25			
Dubendorf Airport	...	dep.	13.15	13.15		
BERNE	...	arr.		13.55		
ST. MORITZ						
St. Moritz	...	arr.	14.05			

* From 1st March.

CONNECTING TRAINS from ZURICH

ZURICH	...	dep.	13.45
Klosters	...	arr.	16.32
Davos	...	"	17.08
Arosa	...	"	17.30
Lenzerheide	...	"	17.05
Waldhaus Flims	...	"	17.12
St. Moritz	...	"	18.40
Pontresina	...	"	18.42
Braunwald	...	"	16.00
ZURICH	...	dep.	15.37
Murren	...	arr.	21.02
Wengen	...	"	20.50
Grindelwald	...	"	20.42
ZURICH	...	dep.	14.16
Engelberg	...	arr.	18.30
Andermatt	...	"	17.47
ZURICH	...	dep.	16.04
Lugano	...	arr.	20.19
Locarno	...	"	20.09

ST. MORITZ—ZURICH—LONDON

CONNECTING TRAINS to ZURICH

Braunwald	...	dep.	10.40
Pontresina	...	"	7.57
St. Moritz	...	"	8.00
Waldhaus Flims	...	"	9.15
Lenzerheide	...	"	9.15
Arosa	...	"	9.06
Davos	...	"	9.30
Klosters	...	"	10.04
ZURICH	...	arr.	12.50
Murren	...	dep.	6.35
Wengen	...	"	6.55
Grindelwald	...	"	7.00
ZURICH	...	arr.	12.32
Locarno	...	dep.	8.52
Lugano	...	"	9.04
Andermatt	...	"	10.05
ZURICH	...	arr.	13.12
Engelberg	...	dep.	8.27
ZURICH	...	arr.	12.31

Air France/Swissair

			Wkdys. (1077)	Wkdys. (1101)
ST. MORITZ	St. Moritz Airport	...	dep.	12.45
BERNE	"	12.25
ZURICH	Bahnhofplatz 7	...	dep.	13.25
	Dubendorf Airport...	...	arr.	13.05
	Dubendorf Airport	...	dep.	14.05
PARIS	Le Bourget Airport	...	arr.	15.25
			Wkdys. (203)	Daily (200)
			*15.30	9.00
LONDON	Croydon	...	arr.	*16.45
	Dorchester Hotel	...	"	*17.45

* From 1st March.

FARES

LONDON to	Single	15 Days return	60 Days return	Excess Baggage per kilo
PARIS	£ 8. 0. 0	£ 8. 0. 0	£ 8. 0. 0	s. d.
ZURICH	£ 8. 2. 0	£ 13. 16. 0	£ 14. 12. 0	1 5
BERNE	£ 8. 12. 0	£ 14. 12. 6	£ 15. 10. 0	1 7
ST. MORITZ	£ 11. 2. 0	£ 19. 16. 0	£ 20. 12. 0	—

The Zurich-St. Moritz service is operated by Swissair, weather conditions permitting.

NORTH AFRICA

LONDON—ALGIERS—TUNIS—

CORSICA

			Daily (200)	Daily (202)	Wkdys. (203)
LONDON					
Croydon Airport	...	dep.	9.00	13.30	*15.30
PARIS					
Le Bourget Airport	...	arr.	10.15	14.45	*16.45
		dep.	11.00	14.00	
MARSEILLES					
Marignane Airport	...	arr.	14.05	9.40	
		dep.	7.30	7.45	10.00
BALEARIC ISLANDS	...	arr.	10.00	12.15	
	dep.		10.30	12.45	
ALGIERS	...	arr.	13.00	15.05	
CORSICA AJACCIO	...	arr.	9.30		
	dep.		10.00		
TUNIS	...	arr.	14.30		

* From 1st March.

† Alcudia or Fornells.

M.E. Daily, Mondays excepted.

† For full details of London-Marseilles Service see page 9.

CORSICA—TUNIS—ALGIERS—

LONDON

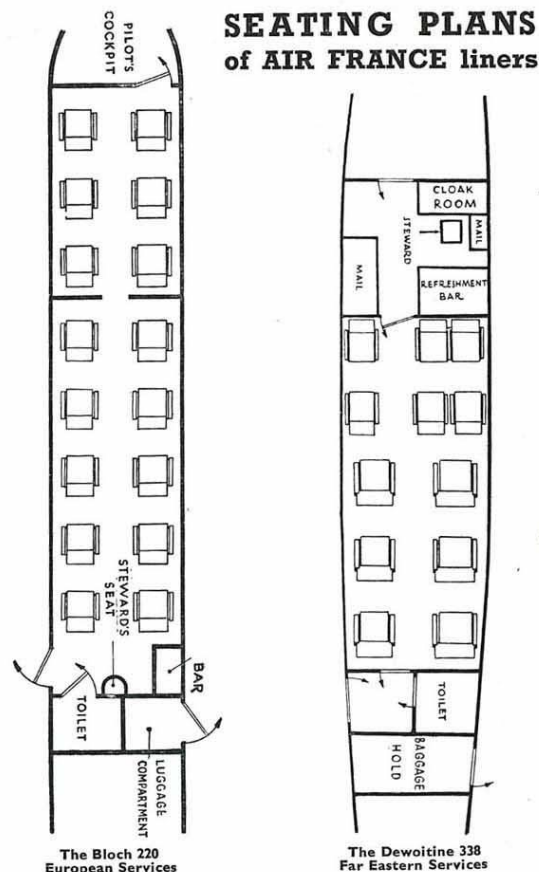
			M.E. (256)	Daily (245)
TUNIS	Airport	...	dep.	6.30
CORSICA, AJACCIO	...	arr.	9.30	
	dep.		10.00	
			M.E. (258)	
ALGIERS	...	dep.	6.45	
BALEARIC ISLANDS	...	arr.	9.25	
	dep.		9.55	
MARSEILLES	Marignane Airport	...	arr.	12.25
			12.30	
			Tues. & Sat. (247)	Daily (200)
PARIS	Le Bourget Airport	...	dep.	12.50
		arr.	15.30	16.10
LONDON	Croydon Airport	...	dep.	9.00
		arr.	10.15	

† Alcudia or Fornells.

† For full details of Marseilles-London Service see page 9.

FARES

LONDON to	Single	60 Days return	Excess Baggage per kilo
MARSEILLES	£ 10. 2. 0	£ 18. 4. 0	1 6
FORNELLS	£ 12. 9. 0	£ 22. 8. 0	1 10
ALGIERS	£ 13. 10. 0	£ 24. 6. 0	2 0
AJACCIO	£ 12. 5. 0	£ 22. 1. 0	1 10
TUNIS	£ 15. 13. 0	£ 28. 3. 0	2 4



PRAGUE & CENTRAL EUROPE

FARES

LONDON to	Single	60 Days return	Excess Baggage per kilo
	£ s. d.	£ s. d.	s. d.
PARIS ...	4 10 0	8 0 0	0 6
STRASBOURG ...	7 5 0	13 1 0	1 1
PRAGUE ...	11 0 0	19 16 0	1 8
WARSAW ...	14 10 0	26 2 0	2 2
VIENNA ...	13 15 0	24 15 0	2 1
BUDAPEST ...	16 0 0	28 16 0	2 5
BELGRADE ...	18 15 0	33 15 0	2 10
BUCHAREST ...	22 5 0	40 1 0	3 4
BRATISLAVA ...	12 6 0	22 3 0	1 10
BRNO ...	12 3 0	21 17 0	1 10
CLUJ ...	18 5 0	32 17 0	2 9
KARLSBAD ...	12 1 0	21 14 0	1 10
LIBREC ...	11 15 0	21 3 0	1 9
JABLONEC ...	12 2 0	21 16 0	1 9
PIESTANY ...	12 9 0	22 8 0	1 10
UZHOROD ...	14 0 0	25 4 0	2 1
KOSICE ...	12 9 0	22 8 0	1 10
ZLIN ...	12 9 0	22 8 0	1 10

CENTRAL EUROPE

LONDON-PRAGUE-CENTRAL EUROPE

Air France/C.S.A.

	Daily (200)	Daily (202)	Wkdys (203)
LONDON			
Dorchester Hotel dep.	8.00	12.30	*14.30
Croydon Airport dep.	9.00	13.30	*15.30
PARIS			
Le Bourget Airport arr.	10.15	14.45	*16.45
	Tues. (1410)	Thurs. (1410)	Sat. (1410)
STRASBOURG ...	dep. ‡ 10.30	arr. ‡ 12.10	dep. ‡ 12.25
PRAGUE ...	arr. ‡ 15.30		
	Mon. (222)	Wed. (222)	Fri. (222)
WARSAW ...	dep. ‡ 13.40	arr. ‡ 15.55	
VIENNA ...			9.15
BUDAPEST ...			9.30
BELGRADE ...			10.30
BUCHAREST ...			10.45
			12.15
			12.30
			15.35

*From 1st March.

‡Until 31st Jan. service departs 12.05, arriving Warsaw 14.20.

‡From 1st February.

CENTRAL EUROPE-PRAGUE-LONDON

Air France/C.S.A.

	(Mon. Wed. Fri.) (221)	Tu. Th. Sat. (222)
BUCHAREST ...	dep. 8.00	arr. 9.05
BELGRADE ...	dep. 9.20	arr. 10.50
BUDAPEST ...	dep. 11.05	arr. 12.05
VIENNA ...	dep. 12.20	arr. 13.35
WARSAW ...	dep. 13.35	arr. 15.30
PRAGUE ...	dep. 13.35	arr. 15.30
STRASBOURG ...	dep. 9.00	arr. 10.05
PARIS, Le Bourget Airport ...	dep. 10.20	arr. 12.00
	Daily (202)	Wkdys. (203)
LONDON Croydon Airport	dep. 13.30	arr. *15.30
Dorchester Hotel	arr. 14.45	*16.45
	15.45	*17.45

*From 1st March.

LONDON—CASABLANCA—LISBON

LONDON	dep.	See page 7 Daily (275) ↓ Daily (267) 5.45	See page 7 ↓ Daily (267) 5.45
PARIS, Le Bourget	dep.		
TOULOUSE Airport	dep.	*6.30	
MARSEILLES	"	dep.		
BARCELONA	"	(§ ALICANTE)	...	arr.	7.55	7.55
			...	dep.	8.10	
ORAN	"	(§ FEZ)	...	arr.	11.00	
			...	dep.	11.30	
CASABLANCA	"	arr.	14.25	
Connection by Aero Portuguesa on Wednesdays (281).						
			...	dep.	7.00	
TANGIER	"	arr.	8.40	
			...	dep.	8.55	
LISBON	"	arr.	11.30	

* Connecting with night train from Paris. Depart Gare d'Orsay 20.15. Arrive Toulouse 5.11.
§ Calls at ALICANTE and FEZ on Mondays).

LISBON—CASABLANCA—LONDON

Connection from Lisbon to Casablanca by Aero Portuguesa on Sundays

LISBON	Airport	dep.	(281) 8.00
TANGIERS	"	arr.	10.35
			dep.	10.50
CASABLANCA	"	arr.	12.30
			Daily (275) 6.45
ORAN	"	(FEZ)	...	dep.	9.40	
		(ALICANTE)	...	arr.	10.10	
			...	dep.	13.00	
BARCELONA	"	arr.	13.00
			dep.	13.15
MARSEILLES	arr.	13.20
			† 15.30
			Wkdys. (246) 10.00
TOULOUSE	"	dep.	14.40
			dep.	↓
PARIS	"	arr.	13.05
			NIGHT TRAIN
LONDON	"	arr.	↓ Daily (202) 14.45

|| Calls at FEZ and ALICANTE Saturdays. On Saturdays departs Casablanca 5.30, Fez 7.10, Oran 9.50, Alicante 13.30, Barcelona 15.25. Arrive Toulouse 17.05.
† Departs Saturdays 15.20, arriving Marseilles 17.30.

FARES

LONDON to	Single	60 Days return	Excess Bagg'e per kilo
MARSEILLES	£ s. d. 10 2 0	£ s. d. 18 4 0	s. d. 1 6
BARCELONA	12 1 0	21 14 0	1 10
ORAN	16 14 0	30 1 0	2 6
CASABLANCA	18 10 0	33 6 0	2 9

ITALY

LONDON—ITALY

Air France/Ala Littoria

	Daily (202)	Wkdys. (203)
LONDON		
Dorchester Hotel
Croydon Airport
PARIS		
Le Bourget Airport
	14.45	*16.45
	Daily (245)	
	8.00	
LYONS		
Bron Airport
	9.35	
ORANGE (Mail call only)
	† 10.30	
	10.35	
MARSEILLES		
Marignane Airport
	10.55	
	Wkdys. (404)	
	11.20	
GENOA
	14.00	
ROME
	14.25	
	16.35	

* From 1st March.
† Does not call on Sundays.

ITALY—LONDON

Air France/Ala Littoria

	Wkdys (404)
ROME	8.00
GENOA	10.10
	10.50
MARSEILLES	
Marignane Airport	...
	11.50
	Daily (245)
	13.15
ORANGE (Mail call only)	...
	† 13.35
	13.40
LYONS	
Bron Airport	...
	14.25
	14.35
PARIS	
Le Bourget Airport	...
	16.10
	Daily (200)
	9.00
LONDON	
Croydon Airport	...
Dorchester Hotel	...
	10.15
	11.15

† Does not call on Sundays.

FARES

LONDON to	Single	15 Day return	60 Day return	Excess Bagg'e per kilo
PARIS	£ s. d. 4 10 0	£ s. d. 7 10 0	£ s. d. 8 0 0	s. d. 0 6
MARSEILLES	10 2 0	—	18 4 0	1 6
GENOA	12 0 0	20 8 0	21 12 0	1 10
ROME	13 6 0	22 13 0	23 19 0	2 0

PARIS—BELGIUM—HOLLAND— GERMANY

Air France/K.L.M./Sabena/D.L.H.

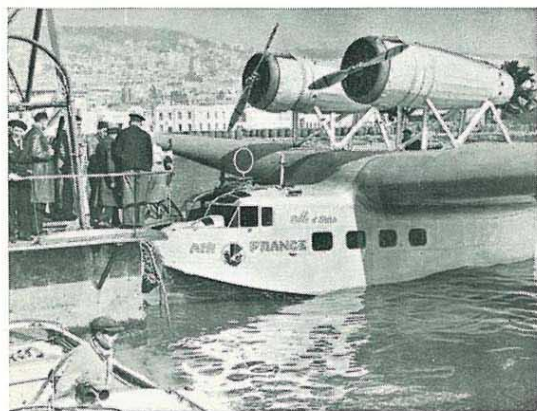
			Wkdys. (6)	Daily (870)	Wkdys. (1008)	Daily (900)
PARIS						
Le Bourget Airport	dep.	8.20		8.25	9.00	13.00
BRUSSELS Airport	arr.			↓	10.00	
	dep.					
ROTTERDAM "	arr.			10.25		
	dep.			10.40		
AMSTERDAM "	arr.			11.00		
COLOGNE "	arr.					15.20
	dep.	11.10				
	arr.	Daily				
	dep.	11.35				
BERLIN "	arr.	13.50				

GERMANY—HOLLAND—BELGIUM— PARIS

Air France/K.L.M./Sabena/D.L.H.

			Daily (6)	Daily (900)	Wkdys. (1008)	Daily (870)
BERLIN Airport	dep.	8.10				
COLOGNE "	arr.	10.45				
	dep.	11.10				
AMSTERDAM "	dep.			*12.15		14.25
ROTTERDAM "	arr.					14.45
	dep.					14.55
BRUSSELS "	arr.					
	dep.					
PARIS "	arr.	12.15		*13.55	14.00	16.15
	dep.				15.00	

* During March departure from Amsterdam is at 11.55, arriving Le Bourget 13.35.



The 4-engine Lioré Flying Boat flies on the Mediterranean services from Marseilles to Corsica and Tunis; from Marseilles to Algiers and on the Eastern service from Marseilles to Tripoli in Syria.

SOUTH AMERICA

LONDON—SOUTH AMERICA

(Line No. 270)

OUTWARD

SATURDAY	London, Paris.
SUNDAY	Toulouse, Dakar.
MONDAY	Dakar, Natal.
TUESDAY	Natal, Recife, Bahia, Caravellas, Rio de Janeiro.
WEDNESDAY	Rio de Janeiro, Porto Alegre, Buenos Aires, Montevideo.
THURSDAY	Buenos Aires, Mendoza, Santiago.

HOMEWARD

SATURDAY	Santiago, Mendoza, Buenos Aires and Montevideo, Buenos Aires.
SUNDAY	Buenos Aires, Porto Alegre, Rio de Janeiro, Caravellas, Bahia, Recife, Natal.
MONDAY	Natal, Dakar.
TUESDAY	Dakar, Casablanca.
WEDNESDAY	Casablanca, Toulouse.
THURSDAY	Paris, London.

Passengers are carried from London to Dakar (see "West Africa") and from Buenos Aires to Santiago.

AIR MAIL AND FREIGHT TO SOUTH AMERICA

Every Saturday an Air France machine leaves Croydon Aerodrome on the most romantic flight in the world—the air mail to South America. This relay service, which covers half the world in four days, flies continuously by night and day across France, round the coast of West Africa, right over the South Atlantic on a direct course of 2,200 miles, down the forest seaboard of South America, to Rio and Buenos Aires, and then across the continent over the ten-thousand feet Andes to Santiago in Chile.

Passengers are taken as far as Dakar, where they can now join the Aeromaritime service which flies round the west coast of Africa as far as Pointe Noire (near Loango), calling en route at the Gold Coast (see page 23). They are also flown on the service across South America from Buenos Aires via Mendoza to Santiago, travelling in Potez-62 air liners similar to those used on the European services.

The D.L.H. (German Airways) also fly a mail service to South America, leaving London on Wednesdays, thus giving two air mail services a week.

FREIGHT. Freight is now also accepted for South America. Full particulars are contained in a separate Freight and Airmail leaflet, which will be sent free on request.

POSTING TIMES AND POSTAL RATES

Airmail should reach the G.P.O. London by 10.30 a.m. on Saturdays. Times of local posting should be obtained from the Head District Post Office. The letter rate for the Argentine, Bolivia, Chile, Paraguay, Peru and Uruguay is 4s. per half-ounce; for Brazil, 3s. 6d. per half-ounce. Reduced rates for postcards and samples.

Mail for the German (D.L.H.) service should reach the G.P.O. by 7 p.m. on Wednesdays.

LONDON to the EAST

WEDNESDAYS TO BAGHDAD, INDIA & HONG KONG
SATURDAYS TO BAGHDAD.

NEW Air France services link Europe to the Near and Far East. One departure, leaving London every Wednesday and flying via Marseilles to Tripoli in Syria, goes on to Baghdad and across India to Hanoi and Saigon in French Indo-China, before finishing its journey at Hong Kong. The other, which leaves London on Saturdays, makes the "local" journey to Baghdad.

On the whole of its Eastern service, Air France uses fast machines and has not unduly limited its schedule, thus allowing each day's flight to be made in a few hours. Consequently there is sufficient time to visit the places of interest en route, and one finds this daily break increases the interest and pleasure of the long journey tremendously.

The fares include meals and first class hotel accommodation en route. 20 kilos free baggage is allowed to passengers beyond Marseilles. The next 20 kilos is charged at half rate, and balance, which is accepted subject to available space, at full tariff. Children of 3 to 7 years, accompanied by parents, are charged half fare. They are allowed 10 kilos free baggage and 10 kilos at half excess baggage rate.

The same clothing may be worn as for rail or boat travel since the cabins are enclosed and heated in winter. On the Mediterranean section, the winter temperature is sometimes quite cool; it is therefore advisable to wear an overcoat and warm woollen under-clothing. In the tropics, however, linen clothing is recommended, but it is advisable not to burden oneself on departure from Europe with too much clothing. The necessary outfit, including pith helmets, may be purchased locally.

Twenty-five per cent. deposit is payable at time seat is applied for, the balance being payable when seat is allotted.

An interchange arrangement has been made with the Messageries Maritimes, so that by an adjustment of fares it is possible to fly one way and travel by steamer the other. Particulars on application.



The Dewoitine 338 flying on the Eastern Service. The same type operates as far as Dakar on the West African line.

FAR EASTERN SERVICE

Lines 233/234/260†

OUTWARD

SATURDAY	WEDNESDAY	London, Paris, Marseilles.
SUNDAY	THURSDAY	†Marseilles, Naples, Corfu
MONDAY	FRIDAY	Corfu, Athens, Castlerosso, Tripoli, Beyrouth
TUESDAY	SATURDAY	Beyrouth, *Damascus, Baghdad, Basra.
	SUNDAY	Basra, Bushire, Jask, Karachi.
	MONDAY	Karachi, Jodhpur, Allahabad, Calcutta.
	TUESDAY	Calcutta, Akyab, Rangoon, Bangkok, Saigon
	WEDNESDAY	Saigon, Hanoi.
	THURSDAY	Hanoi, Hong Kong.

† Alternatively, the route between Marseilles and Damascus will be operated via Tunis, Tripoli, Benghazi, Cairo and Lydda. Details on application.

* Passengers are conveyed by car from Tripoli to Damascus or vice versa.

§ Damascus-Baghdad only.

HOMEWARD

SATURDAY	Hong Kong, Hanoi, Saigon.
SUNDAY	Saigon, Bangkok, Rangoon, Akyab, Calcutta.
MONDAY	Calcutta, Allahabad, Jodhpur, Karachi.
TUESDAY	Karachi, Jask, Bushire, Basra.
WEDNESDAY	Basra, Baghdad, *†Damascus, Tripoli (Beyrouth).
THURSDAY	Tripoli (Beyrouth), Castlerosso, Athens, Corfu.
MONDAY	Corfu, Naples, Marseilles.
TUESDAY	Marseilles, Paris, London.

* Passengers are conveyed by car from Tripoli to Damascus or vice versa.

† Alternatively, the route from Damascus to Marseilles will be via Lydda, Cairo, Benghazi, Tripoli and Tunis. Details on application.

FARES FROM LONDON

Miles		Single Fare £ s. d.	Return Fare (valid one year) £ s. d.		Ex. Bagg'e per kilo. s. d.
655	MARSEILLES ...	20 0 0	36 0 0	2 0	
1,192	NAPLES ...	29 0 0	52 0 0	2 11	
1,537	CORFU ...	32 0 0	58 0 0	3 2	
1,817	ATHENS ...	38 0 0	68 0 0	3 10	
2,190	CASTLEROSSO ...	47 0 0	85 0 0	4 8	
2,662	TRIPOLI AND DAMASCUS ...	62 0 0	112 0 0	6 2	
3,159	BAGHDAD ...	67 0 0	121 0 0	6 8	
3,451	BASRA ...	72 0 0	130 0 0	7 2	
3,687	BUSHIRE ...	80 0 0	144 0 0	8 0	
4,203	JASK ...	85 0 0	153 0 0	8 6	
4,818	KARACHI ...	88 0 0	158 0 0	8 10	
5,222	JODHPUR ...	90 0 0	162 0 0	9 0	
5,794	ALLAHABAD ...	95 0 0	171 0 0	9 6	
6,272	CALCUTTA ...	100 0 0	180 0 0	10 0	
6,667	AKYAB ...	115 0 0	207 0 0	11 6	
7,006	RANGOON ...	125 0 0	225 0 0	12 6	
7,401	BANGKOK ...	130 0 0	234 0 0	13 0	
7,892	SAIGON ...	135 0 0	243 0 0	13 6	
8,637	HANOI ...				
9,209	HONG KONG ...				

The above fares include meals and first class hotel accommodation en route. 20 kilos free baggage is allowed to passengers beyond Marseilles. The next 20 kilos is charged at half above rates, and balance, which is accepted subject to available space, at full tariff. Children of 3 to 7 years, accompanied by parents, are charged half fare. They are allowed 10 kilos free baggage and 10 kilos at half excess baggage rate.

Twenty-five per cent. deposit is payable at time seat is applied for, the balance being payable when seat is allotted.

LOCAL SERVICE. DAMASCUS—BAGHDAD

Line 241

Tuesdays 6.00 dep. 10.15 arr.	↓	DAMASCUS BAGHDAD	↑	Tuesdays arr. 14.15 dep. 12.00
-------------------------------------	---	---------------------	---	--------------------------------------

Fares : Damascus—Baghdad :—
Single, 1,800 francs ; Return (6 months), 2,900 francs. Excess baggage 10 francs per kilo.

LONDON—CAIRO

The Saturday service from London to Damascus will shortly be operated via Marseilles, Tunis, Tripoli, Benghazi, Cairo and Lydda. The service from Damascus will return by the same route. Date of commencement on application.

LONDON to WEST AFRICA

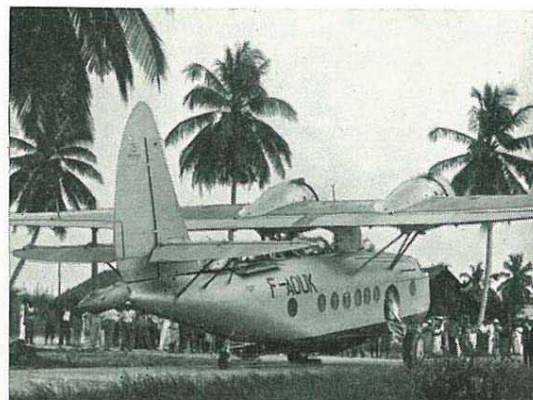
Air France's service to the West African Coast is operated in conjunction with the Aeromaritime Company.

The service, which leaves London on Saturdays, reaches Dakar in Senegal on Sunday night by the first section of the Air France line to South America, and the main part of this journey is flown in large Dewoitine 338 3-engine liners, cruising at 185 m.p.h. At Dakar passengers are transferred to the Sikorsky S43 Amphibians of the Aeromaritime Company, for the journey round the coast of West Africa, calling at such places as Conakry, Ziguinchor, Monrovia, Abidjan, Accra, Cotonou, Douala, Port Gentil and Pointe Noire.

Hotels and meals are included in fares for passengers travelling to Dakar or beyond. Twenty kilos of free accompanied luggage is allowed and the following 20 kilos are charged at half the excess baggage rates for passengers flying beyond Dakar.

In addition to these facilities arrangements have been made for the free transport of 200 kilos of baggage from France by steamer. Full particulars on application.

A further service leaves London on Wednesdays for Dakar.



The Sikorsky S43 Amphibian takes passengers from Dakar along the Gold and Ivory Coasts of West Africa.

WEST AFRICA

LONDON—WEST AFRICA

Lines 201/203/267/270/276

AIR FRANCE

WEDNESDAY	SATURDAY	London, Paris, Marseilles.
THURSDAY	SUNDAY	Marseilles or †Toulouse, Barcelona, Oran, Casablanca, §Agadir, Villa Cisneros, Port Etienne, St. Louis, Dakar.
SATURDAY		Dakar, Kaolack, Tambacounda, Kayes, Bamako (Line 276).

DAKAR-POINTE NOIRE by AEROMARITIME CO.

MONDAY	Dakar, Ziguinchor, Conakry.
TUESDAY	Conakry, Monrovia, Abidjan.
WEDNESDAY	Abidjan, Accra, Cotonou, Douala.
THURSDAY	Douala, Libreville, Port Gentil, Pointe Noire.

WEST AFRICA—LONDON

POINTE NOIRE-DAKAR by AEROMARITIME CO.

FRIDAY	Pointe Noire, Port Gentil, Libreville, Douala.
SATURDAY	Douala, Cotonou, Accra, Abidjan.
SUNDAY	Abidjan, Monrovia, Conakry, Ziguinchor, Dakar.

AIR FRANCE

MONDAY	Bamako, Kayes, Tambacounda, Kaolack, Dakar (Line 276).
SUNDAY	Dakar, St. Louis, Port Etienne, Villa Cisneros, Agadir, Casablanca.
MONDAY	Casablanca, Oran, Barcelona, †Toulouse or Marseilles.
TUESDAY	THURSDAY Marseilles, London.

FARES*

LONDON to	Single			On Year			Excess Bagg'e per kilo
	£	s.	d.	£	s.	d.	
DAKAR ...	56	0	0	109	4	0	8 5
ZIGUINCHOR ...	59	0	0	115	1	0	8 4
CONAKRY ...	61	0	0	118	19	0	8 4
MONROVIA ...	62	0	0	120	18	0	9 2
ABIDJAN ...	67	0	0	130	13	0	10 0
ACCRA ...	71	0	0	138	9	0	10 10
COTONOU ...	72	0	0	140	8	0	11 8
DOUALA ...	76	0	0	148	4	0	12 6
LIBREVILLE ...	79	0	0	154	1	0	13 4
PORT GENTIL ...	81	0	0	157	19	0	14 2
POINTE NOIRE ...	84	0	0	163	16	0	15 0
KAOLACK ...							
TAMBACOUNDA ...							
KAYES ...							
BAMAKO ...							

Fares on application

* Hotel and meals en route are included in fares for passengers travelling to Dakar or beyond.

BAGGAGE—EUROPE—DAKAR. 20 kilos free. Excess at rates above.

BAGGAGE—EUROPE—BEYOND DAKAR, 20 kilos free. Next 20 kilos half rate.

LOCAL SERVICE.—DAKAR, KAOLACK, ST. LOUIS. 15 kilos free, except passengers from Europe, 20 kilos free. Excess at rates above.

† Paris-Toulouse by night train, leaving Gare D'Orsay at 20.15, arriving Toulouse 5.11.

‡ Toulouse-Paris by night train, leaving Toulouse 21.05, arriving Paris 6.55.

§ Service stops at Agadir on Thursdays, departs following day for Dakar.