

DEUTSCHE LUFTHANSA
THE GERMAN AIRWAYS



DEUTSCHE LUFTHANSA
THE GERMAN AIRWAYS



20% Reduction on homeward portion of return tickets

WINTER TIME TABLE

in force from **2 October 1938** to **31 March 1939**.

General Agents in Great Britain, Imperial Airways Ltd.
Book your seat through:

GRANT'S TRAVEL BUREAU
14-30, High Street, CROYDON.

20% Reduction on homeward portion of return tickets

WINTER TIME TABLE

in force from **2 October 1938** to **31 March 1939**.

General Agents in Great Britain, Imperial Airways Ltd.
Book your seat through:



24-passenger four-engined
Express Air Liner Focke-Wulf FW 200



40-passenger four-engined
Express Air Liner Junkers Ju 90

D.L.H. — AIR SERVICES FROM LONDON — WINTER 1938/39



C O N T E N T S

	Page
Season Travel Vouchers and Bulk Travel Vouchers	1
London — Holland — Germany	2
London — Germany — Scandinavia	3
Vienna Air Rapide	4
London — Germany — Near East	5
Car Departure Stations	6
Notes for Passengers	7
Fares and Times from London	8
Air Mail to Germany	9
Air Mail to West Africa and South America	10
Freight Services	11
Freight Rates	12

SEASON TRAVEL VOUCHERS (CARNETS DE BILLETS) and BULK TRAVEL VOUCHERS

For the convenience of regular travellers the Air Companies issue books of vouchers at reduced rates for travel on the air services operated by companies in Europe belonging to the International Air Traffic Association with a reduction of 15% on the official published fares. The minimum value of a Season Travel Voucher Book — valid for 4 months — is £75.—.—. These voucher books are valid only for the holder, his wife and his children under age.

For the convenience of firms regularly using air travel for their bona fide employees the Air Companies have issued travel vouchers with a reduction of 15% on the official published fares.

For further information please apply to the General Agents in Great Britain, Imperial Airways Limited.

All times are given in local standard time.

This time table cancels all previous issues and is subject to alteration without notice.

LONDON - HOLLAND - GERMANY

Daily

Services operated by Deutsche Lufthansa (D. L. H.)
in conjunction with K. L. M. (Royal Dutch Air Lines)

880 K.L.M.	1 D.L.H.			1 D.L.H.	880 K.L.M.
	15.15	dep. London, Airway Terminus	arr.	13.30	
07.55		dep. London, Horseferry House	arr.		21.00
08.45	16.00	dep. Airport of London, Croydon	arr.	12.45	20.10
10.45	18.05	arr. Amsterdam Airport	dep.	11.10	18.45
11.05	18.20	dep. Amsterdam Airport	arr.	10.55	18.20
14.15	21.45	arr. Berlin Airport	dep.	08.40	16.15

Fares and Excess Baggage Rates

		Single Fare	Return Fare	Excess Baggage Rate per kg. (2.2 lbs.) s/d
From London to				
Amsterdam	£	5. 10. 0	9. 18. 0	0/10
Berlin	£	10. 10. 0	18. 18. 0	1/7
Bremen	£	8. 00. 0	14. 8. 0	1/2
Copenhagen	£	12. 10. 0	22. 10. 0	1/7
Gothenburg	£	15. 2. 0	27. 4. 0	2/—
Hamburg	£	8. 15. 0	15. 15. 0	1/2
Malmoe	£	13. 00. 0	23. 8. 0	1/7
Oslo	£	17. 10. 0	31. 10. 0	2/4
Stockholm	£	17. 15. 0	31. 19. 0	2/4
To London from				
Amsterdam	FL	46.—	82.80	0.35
Berlin	RM	140.—	252.—	1.05
Bremen	RM	110.—	198.—	0.85
Copenhagen	d. Kr.	240.—	432.—	1.25
Gothenburg	sw. Kr.	265.—	477.—	1.35
Hamburg	RM	120.—	216.—	0.90
Malmoe	sw. Kr.	225.—	405.—	1.—
Oslo	n. Kr.	295.—	531.—	1.75
Stockholm	sw. Kr.	315.—	567.—	1.75

LONDON - GERMANY - SCANDINAVIA

All services operated daily

Operated jointly by Lufthansa (D.L.H.), K.L.M. (Royal Dutch Air Lines), D.D.L. (Danish Air Lines), A.B.A. (Swedish Air Lines), D.N.L. (Norwegian Air Lines)

	27 D.L.H./ D.D.L./ A.B.A./ D.N.L.	1600 K.L.M./ A.B.A.	27 D.L.H./ D.D.L.	27/ 856/900 D.L.H./ D.D.L./ K.L.M.	1/126 D.L.H./ K.L.M.
	2. 10. — 31. 10. 38	— 31. 3. 39	1. 3. — 31. 3. 39	1. 11. 38 — 28 2. 39	2. 10. — 31. 10. 38 & 1. 3. — 31. 3. 39
London, Airway Terminus dep.	07.15		09.00		15.15
London, Horseferry House dep.		08.10		12.25	
Airport of London, Croydon dep.	08.00	09.00	09.45	13.15	16.00
Amsterdam Airport arr.		11.00		15.25	18.05
Amsterdam Airport dep.		11.20		15.45	18.25
Bremen Airport arr.					20.30
Bremen Airport dep.					20.45
Hamburg Airport arr.	12.20		13.15	18.15	21.20
Hamburg Airport dep.	12.40		13.35	18.35	
Copenhagen Airport arr.	14.05	14.35	14.30	19.55	
Copenhagen Airport dep.	13.05	14.55		20.15	
Malmoe Airport arr.		17.05		20.30	
Stockholm Airport arr.					
Gothenburg Airport arr.	14.20				
Gothenburg Airport dep.	14.40				
Oslo Airport arr.	16.00				
	126/856 D.L.H./ K.L.M.	27/ 900/856 D.L.H./ K.L.M.	1600 K.L.M./ A.B.A.	27 D.L.H./ D.D.L.	27 D.L.H./ D.D.L./ A.B.A./ D.N.L.
	2. 10. — 31. 10. 38 & 1. 3. — 31. 3. 39	— 1. 11. 38 — 31. 3. 39	— 2. 10. 38. — 31. 3. 39	1. 3. — 31. 3. 39	2. 10. 38 — 31. 10. 38
Oslo Airport dep.					08.15
Gothenburg Airport arr.					09.35
Gothenburg Airport dep.					09.55
Stockholm Airport dep.			09.30		
Malmoe Airport dep.		08.30			
Copenhagen Airport arr.		08.45	11.40		11.10
Copenhagen Airport dep.		09.00	12.00	12.00	11.45
Hamburg Airport arr.			10.20	12.55	13.10
Hamburg Airport dep.	09.40	10.40		13.15	13.30
Bremen Airport arr.	10.15				
Bremen Airport dep.	10.30				
Amsterdam Airport arr.	11.25	11.50	14.05		
Amsterdam Airport dep.	11.50	12.10	14.30		
Airport of London, Croydon arr.	13.25	13.45	15.55	15.05	16.15
London, Horseferry House arr.	14.15	14.35	16.45		
London Airway Terminus arr.				15.50	17.00

VIENNA AIR RAPIDE

Line 31 Operated daily by Lufthansa in conjunction with Sabena (Belgian Air Lines)

London-Frankfurt and v. v. operated by Sabena with Savoia Marchetti S 73 airliners.

Frankfurt-Vienna and v. v. operated by Lufthansa with 4-engined Focke Wulf airliners.

Refreshments served on board.

08.00	dep. London, Airway Terminus	arr.	16.15
08.45	dep. Airport of London, Croydon	arr.	15.30
10.00	arr. Brussels Airport	dep.	14.00
10.25	dep. Brussels Airport	arr.	13.40
12.50	arr. Frankfurt Airport	dep.	13.15
13.25	dep. Frankfurt Airport	arr.	12.50
14.35	arr. Munich Airport	dep.	11.30
15.05	dep. Munich Airport	arr.	11.10
16.25	arr. Vienna Airport	dep.	09.40

Fares and Excess Baggage Rates

		Single Fare	Return Fare	Excess Baggage Rate per kg. (2.2 lbs.) s/d
From London to				
Brussels	£	3. 10. 0	6. 6. 0*	0/6
Frankfurt	£	7. 7. 0	13. 5. 0	1/1
Munich	£	10. 17. 0	19. 11. 0	1/8
Vienna	£	13. 15. 0	24. 15. 0	2/1
To London From				
Brussels	B. Frs.	500.—	900.—	3.75
Frankfurt	RM	98.—	176.40	0.75
Munich	RM	142.—	255.60	1.05
Vienna	RM	185.—	333.—	1.40

* 15 day return tickets London—Brussels: £ 5. 19. 0

LONDON - GERMANY - NEAR EAST

London — Baghdad — Teheran — Kabul

Operated by Deutsche Lufthansa. Once a week.

Thursday	15.15	dep. London, Airway Terminus	arr.	13.30	Saturday
"	16.00	dep. Airport of London, Croydon	arr.	12.45	"
"	18.05	arr. Amsterdam Airport	dep.	11.10	"
"	18.20	dep. Amsterdam Airport	arr.	10.55	"
"	21.45	arr. Berlin Airport	dep.	08.40	"
Friday	02.00	dep. Berlin Airport	arr.	17.00	Friday
"	04.30	arr. Vienna Airport			
"	05.15	dep. Vienna Airport			
		Budapest Airport	dep.	13.30	"
		Budapest Airport	arr.	12.30	"
		Belgrade Airport	dep.	11.15	"
		Belgrade Airport	arr.	10.45	"
"	12.30	arr. Athens Airport	dep.	08.00	"
"	13.00	dep. Athens Airport	arr.	16.15	Thursday
"	15.15	arr. Rhodes Airport	dep.	14.00	"
"	16.00	dep. Rhodes Airport	arr.	13.00	"
"		Damascus Airport	dep.	09.10	"
"		Damascus Airport	arr.	08.10	"
Saturday	00.30	arr. Baghdad Airport	dep.	05.30	Wednesday
"	09.00	dep. Baghdad Airport	arr.	19.00	Wednesday
"	12.50	arr. Teheran Airport	dep.	15.50	"
"	05.20 ^a	dep. Teheran Airport	arr.	*14.50	"
Sunday	11.40 ^a	arr. Herat Airport	dep.	*10.40	"
"	12.40 ^a	dep. Herat Airport	arr.	*09.40	"
"	15.40 ^a	arr. Kabul Airport	dep.	*06.40	"

^a) The section Teheran—Herat—Kabul and v. v. is operated fortnightly only. First departure from Teheran to Kabul on 16th October 1938 and every fortnight thereafter. The first trip Kabul Teheran will be made on 5th October and every fortnight thereafter.

Meals served en route are included in the fare. For passengers to destinations East of Baghdad hotel accommodation at Baghdad and Teheran respectively and for passengers to London from points East of Athens hotel accommodation at Baghdad, Athens and Berlin is included in the fare.

Fares and Excess Baggage Rates

		Single Fare	Return Fare	Excess Baggage Rate per kg. (2.2 lbs.) s/d
From London to				
Athens	£	27. 0. 0	48. 12. 0	4/1
Baghdad	£	62. 0. 0	111. 12. 0	6/3
Herat	£	100. 0. 0	180. 0. 0	12/—
Kabul	£	115. 0. 0	207. 0. 0	14/3
Teheran	£	78. 0. 0	140. 8. 0	8/8
To London from				
Athens	Dr.	15,600.—	28,080.—	117.—
Baghdad	£	62. 0. 0	111. 12. 0	6/3
Herat	Afgh	4,750.—	8,550.—	28.40
Kabul	Afgh	5,415.—	9,747.—	33.90
Teheran	Rials	6,290.—	11,322.—	34.90

ARRIVAL AND DEPARTURE STATIONS

A list is given below of the Arrival and Departure stations in each town mentioned in these time tables and it is to and from these stations that passengers will be conveyed by car on arrival at, and departure from the Airports concerned. The scheduled number of minutes spent in transit between the stations and the Airport is given in brackets.

LONDON

Imperial Airways Limited, Airway Terminus, Victoria Station, (Continental Departure Side) S. W. 1 (45), or K. L. M. Horseferry House, Horseferry Road, (adjoining Millbank), Westminster, S. W. 1. (50),

AMSTERDAM

K. L. M. Leidsche Plein (35),

BAGHDAD

Maude Hotel (30),

BERLIN

No car service provided as the Airport is only about 10 minutes drive by taxi from the middle of the city.

BREMEN

no car service provided.

BRUSSELS

Sabena, 145, Rue Royale (30),

COPENHAGEN

D. D. L. Vesterbrogade 2 (50),

FRANKFORT

Lufthansa Travel Office, Hindenburgplatz 10, opposite Main Railway Station, (35),

HAMBURG

Lufthansa, Travel Office, Jungfernstieg, (40),

KABUL

Hotel de Kabul,

MALMOE

Central Railway Station, (30),

MUNICH

Lufthansa, Travel Office, Ritter - von - Epp - Platz 6, Hotel Bayerischer Hof, (35),

STOCKHOLM

A. B. Aerotransport, Flygpaviljongen Nybroplan, (35), and A. B. Aerotransport, Kungsholmstorg 1, (30),

TEHERAN

Hotel Ferduysi,

VIENNA

Travel Office, Austroflug and Lufthansa, Wien. I. Kärtnering 5, (Hotel Bristol) (50).

NOTES FOR PASSENGERS

BAGGAGE. Each passenger is allowed to carry free 15 kg (33 lbs.) of baggage. With a few exceptions, excess baggage is charged for at the rate of approximately $\frac{3}{4}\%$ of the passenger fare.

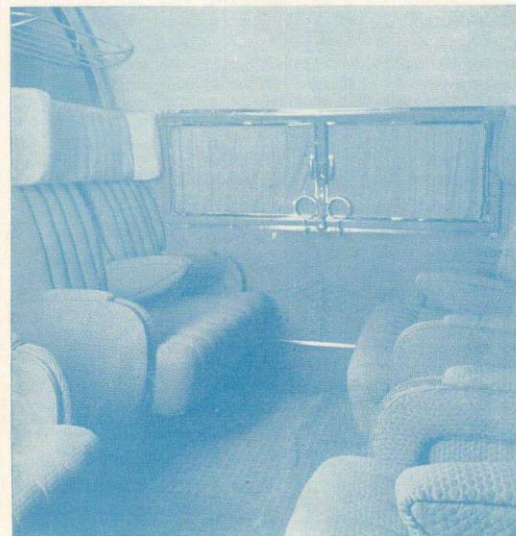
CAMERAS. Please leave your cameras in your baggage owing to restrictions in force with regard to the taking of photographs from the air, or register them at your station of departure in order to avoid difficulties.

CHILDREN. Children up to 3 years of age are charged 10% of the fare, children from 3-7 years of age half fare.

CONDITIONS. The full conditions under which the Lufthansa undertakes to carry passengers will be found inside the cover of every air ticket.

PASSPORTS. Passengers are reminded that passports, endorsed for all countries through which they are travelling and bearing the visas required by current regulations, must be carried on the person. Passengers are advised to verify the validity and the accuracy of their passports, endorsements and visas.

PRIVATE AIR RADIOGRAMS. For the convenience of our passengers, arrangements have been made for private telegrams to be transmitted from the aeroplane to the ground station for any destination in Europe when the aircraft is flying over the following countries: - Belgium, Czechoslovakia, Danzig, France, Germany, Holland, Hungary, Sweden and Switzerland. Rates can be obtained from the wireless operator on board. The telegrams will be transmitted as and when the necessary wireless communication in connection with the navigation of the aeroplane permits.



Passenger compartment Ju 90 (40 passengers)

BY AIR TO GERMANY AND CENTRAL EUROPE

All services are operated
daily unless stated otherwise.

Dep. London (Croydon)	to	Arr.	Single Fare £ s. d.	Return Fare £ s. d.	Excess Baggage Rate per kg (2.2 lbs) s/d	Route
09.00	Amsterdam	11.00	5.10.0	9.18.0	0/10	1600
13.15 ¹	Amsterdam	15.25	5.10.0	9.18.0	0/10	856, 27/856
16.00	Amsterdam	18.05	5.10.0	9.18.0	0/10	1
08.45 ⁴	Athens	17.00	27.10.0	49.10.0	4/2	31/17
16.00 ²	Athens	12.30	27.10.0	49.10.0	4/2	1/71
16.00 ³	Baghdad	00.30	62.0.0	111.12.0	6/3	1/71
08.45 ⁴	Belgrade	10.30	18.15.0	33.15.0	2/10	31/17
08.45	Berlin	14.15	10.10.0	18.18.0	1/7	880
16.00	Berlin	21.45	10.10.0	18.18.0	1/7	1
16.00 ⁵	Bremen	20.30	8.0.0	14.8.0	1/2	1/126
08.45 ¹³	Breslau	18.25	12.18.0	23.4.0	1/11	880/20
08.45 ⁸	Brussels	10.00	3.10.0	6.6.0	0/6	31
09.00 ^{7,8}	Brussels	10.40	3.10.0	6.6.0	0/6	643
12.00 ^{7,8}	Brussels	13.30	3.10.0	6.6.0	0/6	1001
16.00 ^{8,9}	Bucarest	16.25	22.15.0	40.19.0	3/5	1/117
08.45 ⁴	Budapest	08.40	16.0.0	28.16.0	2/5	31/17
09.00 ^{7,9}	Cologne	12.50	5.10.0	9.18.0	0/10	643
12.00 ^{7,9}	Cologne	15.30	5.10.0	9.18.0	0/10	1001
08.00 ¹⁰	Copenhagen	14.05	12.10.0	22.10.0	1/7	27
09.00	Copenhagen	14.35	12.10.0	22.10.0	1/7	1600
09.45 ¹¹	Copenhagen	14.30	12.10.0	22.10.0	1/7	27
13.15 ¹²	Copenhagen	19.55	12.10.0	22.10.0	1/7	27/856/900
08.45 ^{7,14}	Danzig	19.15	13.14.0	24.13.0	2/1	880/4
08.45 ⁷	Duesseldorf	12.25	5.10.0	9.18.0	0/10	31/38
08.45	Frankfurt	12.50	7.7.0	13.5.0	1/1	31
09.00 ⁷	Frankfurt	13.55	7.7.0	13.5.0	1/1	643
08.45 ^{6,7}	Freiburg	15.25	9.12.0	17.6.0	1/5	31/121
08.45 ⁵	Gleitwitz	19.25	13.12.0	24.10.0	2/1	880/20
08.45	Halle	15.30	10.4.0	18.7.0	1/6	31/119
12.00 ⁷	Halle	17.25	9.0.0	16.4.0	1/4	1001/155
08.00 ¹⁰	Hamburg	12.20	8.15.0	15.15.0	1/2	27
09.45 ¹¹	Hamburg	13.15	8.15.0	15.15.0	1/2	27
13.15 ¹²	Hamburg	18.15	8.15.0	15.15.0	1/2	27/856/900
16.00 ⁵	Hamburg	21.20	8.15.0	15.15.0	1/2	1/126
08.45 ⁵	Heidelberg	13.25	8.1.0	14.10.0	1/2	31/36
16.00 ¹⁵	Helsingfors	16.30	21.1.0	37.18.0	2/10	1/33
16.00 ¹⁶	Helsingfors	14.35	21.1.0	37.18.0	2/10	1/33
16.00 ¹⁷	Herat	11.40	100.0.0	180.0.0	12/-	1/71
16.00 ¹⁷	Kabul	15.40	115.0.0	207.0.0	14/3	1/71
08.45 ^{5,7}	Koenigsberg	20.20	14.10.0	26.2.0	2/2	880/4
16.00 ¹⁵	Kowno	11.15	16.0.0	28.16.0	2/6	1/33
16.00 ¹⁶	Kowno	09.40	16.0.0	28.16.0	2/6	1/33
08.45	Leipzig	15.30	10.4.0	18.7.0	1/6	31/119
12.00 ⁷	Leipzig	17.25	9.0.0	16.4.0	1/4	1001/155
08.45 ⁵	Ludwigshafen	13.25	8.1.0	14.10.0	1/2	31/36
13.15 ⁵	Malmoe	19.50	13.0.0	23.8.0	1/7	856/900
13.15 ¹⁵	Malmoe	20.30	13.0.0	23.8.0	1/7	27/856/900
08.45 ⁵	Mannheim	13.25	8.1.0	14.10.0	1/2	31/36
08.45	Munich	14.35	10.17.0	19.11.0	1/8	31
08.45 ^{5,7}	Nuremberg	14.00	9.4.0	16.11.0	1/5	31/99
08.45 ⁵	Posen	15.40	12.15.0	22.19.0	1/11	880/13

Dep London (Croydon)	to	Arr.	Single Fare £ s. d.	Return Fare £ s. d.	Excess Baggage Rate per kg (2.2 lbs) s/d	Route
16.00 ¹⁶	Reval	15.55	18.18.0	34.0.0	2/10	1/33
16.00 ¹⁶	Reval	14.00	18.18.0	34.0.0	2/10	1/33
16.00 ¹⁵	Riga	13.50	17.3.0	30.17.0	2/7	1/33
16.00 ¹⁶	Riga	12.15	17.3.0	30.17.0	2/7	1/33
08.45 ⁴	Salonica	15.15	25.0.0	45.0.0	3/9	31/17
08.45 ⁴	Sofia	13.25	23.0.0	41.8.0	3/6	31/17
09.00	Stockholm	17.05	17.15.0	31.19.0	2/4	1600
08.45 ⁷	Stuttgart	14.00	9.0.0	16.4.0	1/4	31/121
16.00 ³	Teheran	12.50	78.0.0	140.8.0	8/8	1/71
08.45	Vienna	16.25	13.15.0	24.15.0	2/1	31
08.45 ⁵	Warsaw	17.20	14.10.0	26.2.0	2/2	880/13

¹ Optional landing at Rotterdam. Single fare £ 5. —, —, Return fare £ 9. —, —, excess baggage 0/9 per kg.

² Thursdays only, arrival Fridays.

³ Thursdays only, arrival Saturdays.

⁴ Sundays to Fridays only arrival next day. Overnight-stop at Vienna. From 1. 11. 38 — 28. 2. 39 departure from London only on Sundays, Tuesdays and Thursdays.

⁵ From 2. 10.—31. 10. 38 and 1. 3.—31. 3. 39 only.

⁶ Sundays, Tuesdays and Thursdays only. Arrival next day. Overnight-stop at Berlin.

⁷ Weekdays only.

⁸ 15-day return fare £ 5. 19. 0

⁹ 15-day return fare £ 9. 7. 0

¹⁰ From 2.—31. 10. 38 only.

¹¹ From 1.—31. 3. 39 only.

¹² From 1. 11. 38 up to and including 28. 2. 39.

¹³ From 2.—31. 10. 38 and 1.—31. 3. 39 only. Arrival at Breslau in the time from 1. 11. 38—28. 2. 1939 at 20. 35.

¹⁴ From 1. 11. 38 to 28. 2. 39 arrival Danzig at 18.55.

¹⁵ Sunday to Friday only. Overnight-stop in Berlin. From 2. 10. — 31. 10. 38 and 1. 3.—31. 3. 39 only.

¹⁶ From 1. 11. 38 — 28. 2. 39 departure from London Sundays, Tuesdays and Thursdays only. Second class rail fare and sleeper between Berlin and Koenigsberg is included in the fare.

¹⁷ Thursdays only, every fortnight commencing from 13. 10. 1938, arrival Sundays.

**Special night service for mails operated
by Deutsche Lufthansa in conjunction
with British Airways Limited Weekdays
only, not in the night from Sundays to
Mondays.**

London to Continent read down PF 171		Continent to London read up PF 171
21.45	dep. Airport of London, Croydon	arr. 04.45
01.10	arr. Cologne Airport	dep. 03.15
01.35	dep. Cologne Airport	arr. 02.50
02.45	arr. Hanover Airport	dep. 01.30
03.10	dep. Hanover Airport	arr. 00.55
04.20	arr. Berlin Airport	dep. 23.35

Last posting of letters for dispatch by air at ordinary postage rates at 7 p. m. in ordinary letter box outside G. P. O. King Edward Street, London E. C. 1.

AIR MAIL SERVICES TO WEST AFRICA AND SOUTH AMERICA

Air France, Lufthansa and Syndicato Condor Ltda., operate twice a week and all the way by air a mail service to South America. Latest times of posting Air Mails at the G. P. O. King Edward Street, London E. C. 1., at 7 p. m. Wednesdays and 10.30 a. m. Saturdays.

Mails leaving by these services are due to arrive as follows:

Leaving CROYDON WEDNESDAYS		
Bathurst, British Gambia	Fridays	
Natal	"	
Rio de Janeiro	Saturdays	
Montevideo	Sundays	
Buenos Aires	"	
Santiago	Mondays	
Leaving CROYDON SATURDAYS		
Casablanca	Sundays	
Dakar/Natal	Mondays	
Rio de Janeiro	Tuesdays	
Montevideo	Wednesdays	
Buenos Aires	Thursdays	
Santiago		

Convenient Air Mail connections also to Bolivia, Ecuador, Paraguay and Peru.

Rates of Postage

To British Gambia	Letters 9 d per 1/2 oz.	
	Postcards 5 d	
	Printed Papers 4 d per 1/2 oz.	
Sierra Leone	Letters 1 s per 1/2 oz.	
	Postcards 6 d	
	Printed Papers 6 d per 1/2 oz.	
Morocco	Letters 4 d per 1/2 oz.	
	Postcards 2 d	
	Printed Papers 2 d per 1/2 oz.	
Senegal	Letters 1 s / 3 d per 1/2 oz.	
	Postcards 7 d	
	Printed Papers 5 d per 1/2 oz.	
Brazil	Letters 3 s 6 d per 1/2 oz.	
	Postcards 1 s 9 d / Printed Papers and Small Packets 10 d per 1/2 oz.	
Argentine	Letters 4 s per 1/2 oz.	
Bolivia		
Chile		
Ecuador		
Paraguay		
Peru	Postcards 2 s	
Uruguay		
Argentina	Printed Papers 1 s per 1/2 oz.	
Mails leaving:		
	Small Packets 1 s per 1/2 oz.	
	Santiago	Wednesdays
	Buenos Aires	
	Montevideo	Thursdays
	Rio de Janeiro	
are due to arrive in	London on Mondays and	
Mails leaving:	Santiago	Saturdays
	Buenos Aires	
	Montevideo	Sundays
	Rio de Janeiro	
are due to arrive in	London on Wednesdays.	

Information regarding the latest times of posting Air Mails for the above two services may be obtained at all local post offices.

Deutsche Lufthansa A.G. The German Airways,
Airport of London, Croydon, Surrey.
Telegrams: Lufthansa Croydon. Telephone: Croydon 4422

SEND YOUR GOODS BY AIR

Lufthansa operates a special freight service from London and in addition every Lufthansa service leaving Croydon carries freight.

F 170 Weekdays only		F 170 Not Sundays to Mondays
09.30	dep. Airport of London, Croydon arr.	04.40
11.30	arr. Amsterdam Airport	
12.40	dep. Amsterdam Airport	
	Cologne Airport dep.	03.05
	Cologne Airport arr.	02.40
14.20	arr. Essen/Muelheim Airport	
14.35	dep. Essen/Muelheim Airport	
15.40	arr. Hanover Airport	
15.55	dep. Hanover Airport	
	Halle/Leipzig Airport dep.	00.40
	Halle/Leipzig Airport arr.	00.25
17.10	arr. Berlin Airport dep.	23.35

Freight arriving by this service at Croydon will be delivered to the consignees in the forenoon with the exception of Sundays, when delivery is effected Monday morning.

WHERE TO DELIVER FREIGHT

IN LONDON: Goods for dispatch by German Airways (DLH) can be collected from any address in the City or West End of London, or they may be handed to our General Agents for Great Britain — Imperial Airways Ltd., — at the following addresses:

1. Airway Terminus, Victoria Station, Continental Departure Side, S.W.1. 'Phone Victoria 2211.
2. West End Booking Office, Charles Street, Lower Regent Street, S.W.1. 'Phone Victoria 2211.
3. Croydon Aerodrome, Export Dept. 'Phone Croydon 4422.

FROM THE PROVINCES: Goods may be dispatched by passenger train to any of the London Terminal Stations for collection by Imperial Airways. The consignments should be addressed to Imperial Airways Ltd., "To be called for".

Senders should advise our General Agents of the dispatch giving shipping instructions. Goods can also be consigned to Imperial Airways Ltd., East Croydon Station, "To be called for".

FREIGHT RATES

The rates are from Airport to Airport, except where specified, and do not include clearance charges or Customs duties. Minimum charge as for 2 kg.

- ¹ indicates the rates are from Domicile to Domicile¹
- ² indicates the rates are from Town Depot to Town Depot.
- ³ indicates the rates are from Depot to Domicile.
- ⁴ indicates the rates are from Depot to Aerodrome.
- ⁵ indicates the minimum charge for 1 kg only.

The following rebates on large shipments are allowed per consignment from one consignor to one consignee:

From 26—50 kg	5 ⁰ / ₁₀₀
" 51—75 "	10 ⁰ / ₁₀₀
" 76—100 "	15 ⁰ / ₁₀₀
over 100 kg	20 ⁰ / ₁₀₀

provided the ultimate amount payable equals the highest figure in the preceding weight scale.

London to:	Rate per kg	Insur. % Minimum 1/—	London to:	Rate per kg	Insur. % Minimum 1/—
³ Amsterdam	1/1	1/6	Karlsruhe	1/9	2/—
Athens	6/2	3/9	³ Kiel	1/9	2/—
⁵ Baghdad	10/3		Königsberg	3/5	1/6
Belgrade	4/—	6/—	Kaunas	3/11	7/—
⁵ Berlin	2/3	1/6	Lisbon	5/—	
Braunschweig	1/9	1/6	Magdeburg	1/10	1/6
⁵ Bremen	1/7	1/6	³ Mannheim	1/8	1/6
⁵ Breslau	2/7	1/9	¹ Marseilles	2/1	2/—
⁴ Bucharest	4/10	7/6	Milan v. Frankf.	3/3	5/—
Budapest	3/7	3/—	⁵ Munich	2/1	1/6
Cologne v. A'dam	1/4	1/6	Münster	1/9	1/6
⁵ Cologne direct	1/1	1/6	⁵ Nuremberg	1/9	1/6
Copenhagen	2/6	1/7	Oslo	3/7	3/4
Danzig	3/1	5/—	Posen	2/7	4/—
⁵ Dortmund	1/4	2/6	Prague	2/4	3/—
⁵ Dresden	2/3	1/6	⁵ Rhodes	7/6	
⁵ Düsseldorf	1/4	1/6	Riga	4/3	7/—
Erfurt	1/11	1/6	Rome v. Frankf.	3/7	5/—
⁵ Essen	1/4	1/6	Saarbrücken	1/6	2/6
Flensburg	1/11	1/6	Salamanca	4/2	
⁵ Frankfurt/M.	1/7	1/6	Salonica	5/7	3/9
Freiburg	1/11	2/6	Salzburg	2/4	3/—
Friedrichshafen	2/—	3/4	⁴ Sofia	5/1	7/6
Geneva	1/10	2/—	⁵ Stettin	2/6	1/6
Gleiwitz	2/9	3/4	Stockholm	3/10	5/—
Gothenburg	3/2	3/4	⁵ Stuttgart	1/9	1/6
⁵ Halle/Leipzig	1/10	1/6	Tallinn	4/7	7/6
⁵ Hamburg	1/7	1/6	⁵ Teheran	18/3	
⁵ Hanover	1/7	2/—	Venice	2/10	5/—
⁴ Helsingfors	4/10	7/6	Vienna	2/11	3/—
Hirschberg	2/8	1/6	Warsaw	3/3	6/—
⁵ Kabul	23/9		¹ Zürich	1/10	2/—



Passenger compartment FW 200 (24 passengers)



Passenger compartment Ju 90 (40 passengers)