



ICELANDAIR



ICELANDAIR



time table

time table



AGENT:

VALID FROM APRIL 1st UNTIL
OCTOBER 31st 1961

ICELANDAIR

FLUGFÉLAG ÍSLANDS H.F.

Member of IATA

THE BIGGEST LITTLE AIRLINE IN THE WORLD

ICELANDAIR

FLUGFÉLAG ÍSLANDS H.F.

CONTENTS

- 1 ICELAND-EUROPE
- 2 EUROPE-ICELAND
- 3 REYKJAVIK-COPENHAGEN
- 4 COPENHAGEN-REYKJAVIK
- 5 ICELAND-GREAT BRITAIN-FRANCE
- 6 FRANCE-GREAT BRITAIN-ICELAND
- 7 REYKJAVIK-HAMBURG
- 8 HAMBURG-REYKJAVIK
- 9 REYKJAVIK-OSLO
- 10 OSLO-REYKJAVIK
- 11 OSLO-COPENHAGEN-HAMBURG
- 12 HAMBURG-COPENHAGEN-OSLO
- 13 REYKJAVIK-HELSINKI
- 14 HELSINKI-REYKJAVIK
- 15 REYKJAVIK-GOTHENBURG-STOCKHOLM
- 16 STOCKHOLM-GOTHENBURG-REYKJAVIK
- 17 SCOTLAND-SCANDINAVIA
- 18 SCANDINAVIA-SCOTLAND
- 19 MAIN DOMESTIC SERVICES IN ICELAND

1 ICELAND-EUROPE

ICELANDAIR VISCOUNT	FI-230	FI-230	FI-230	FI-210	FI-230	FI-230	FI-200	FI-230	FI-220	FI-230
Frequency	①	②	③	④	⑤	⑥	⑦	⑧	⑨	⑩
First day of operation	10/4	6/6	5/4	7/6	4/5	7/4	16/6	17/6	1/4	14/5
Last day of operation	30/10	31/10	6/9	4/10	26/10	27/10	29/9	23/9	28/10	1/10
Reykjavik Dep	08.00	08.00	08.00	08.30	08.00	08.00	10.00	08.00	10.00	08.00
Glasgow Arr	12.00	12.00	12.00		12.00	12.00		12.00		12.00
Glasgow Dep	12.30	12.30	12.30		12.30	12.30		12.30		12.30
Oslo Dep				14.30				16.00		
Oslo Arr				15.00				16.20		
Copenhagen Dep	14.55	14.55	14.55	15.15	14.55	14.55		16.35	14.55	
Copenhagen Arr				15.40				17.10		
Hamburg Arr				16.35				18.05		
London Dep							15.00			
London Arr							15.45			
Paris Dep							16.55			

Please note: Arrival and departure times at Reykjavik one hour earlier before April 2nd and after October 21st, at Glasgow and London after October 28th and at Oslo after September 16th.

2 EUROPE-ICELAND

ICELANDAIR VISCOUNT	FI-231	FI-231	FI-231	FI-211	FI-231	FI-231	FI-201	FI-231	FI-221	FI-231
Frequency	①	②	③	④	⑤	⑥	⑦	⑧	⑨	⑩
First day of operation	10/4	6/6	5/4	7/6	4/5	7/4	16/6	17/6	2/4	14/5
Last day of operation	30/10	31/10	6/9	4/10	26/10	27/10	29/9	23/9	29/10	1/10
Paris Dep							17.20			
London Arr							18.30			
London Dep							20.10			
Hamburg Dep				17.30				09.45		
Copenhagen Arr				18.25				10.40		
Copenhagen Dep	16.50	16.50	16.50	18.55	16.50	16.50		11.30	16.50	
Oslo Dep				21.20				13.55		
Oslo Arr				21.45				14.30		
Glasgow Dep	19.35	19.35	19.35	19.35	19.35	19.35		19.35	19.35	
Glasgow Arr	20.20	20.20	20.20	20.20	20.20	20.20		20.20	20.20	
Reykjavik Dep	22.30	22.30	22.30	23.55	22.30	22.30	23.30	22.30	16.40	22.30

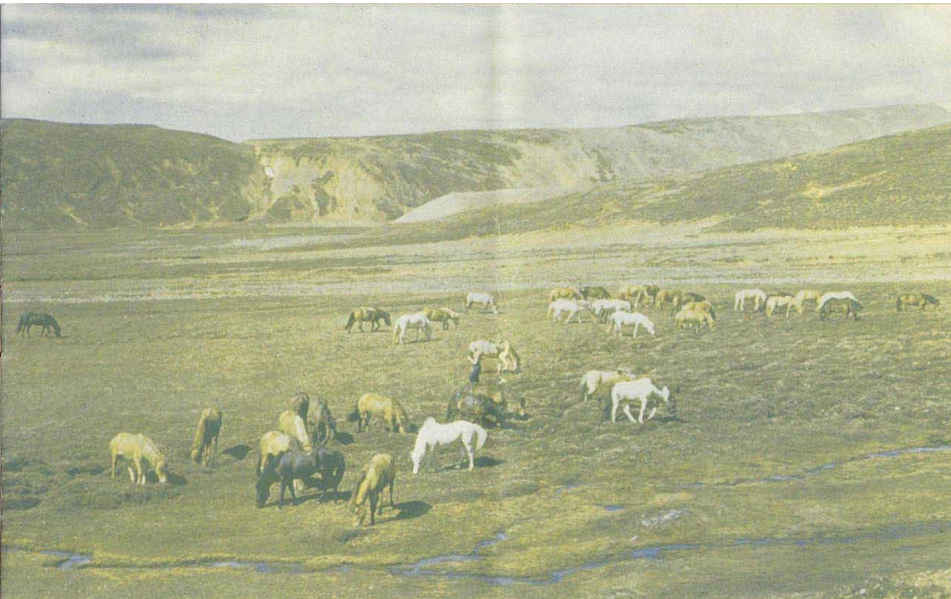
- ① - MONDAY
- ② - TUESDAY
- ③ - WEDNESDAY
- ④ - THURSDAY
- ⑤ - FRIDAY
- ⑥ - SATURDAY
- ⑦ - SUNDAY

SERVICE EN ROUTE

Complimentary meals will be served onboard at normal mealtimes. Below is a list of the meals you may expect on ICELANDAIR's international flights:

- REYKJAVIK - LONDON Lunch
- LONDON - REYKJAVIK Dinner
- REYKJAVIK - GLASGOW Breakfast
- GLASGOW - REYKJAVIK Dinner/Light Refreshments
- REYKJAVIK - OSLO Lunch/Light Refreshments
- OSLO - REYKJAVIK Light Refreshments
- GLASGOW - COPENHAGEN Lunch
- COPENHAGEN - GLASGOW Dinner
- OSLO - COPENHAGEN Light Refreshments
- COPENHAGEN - OSLO Lunch/Dinner
- COPENHAGEN - HAMBURG Light Refreshments
- HAMBURG - COPENHAGEN Break/Light Refreshm.

All ICELANDAIR and connecting services stated in this timetable are TOURIST CLASS. All times are LOCAL TIMES.



The faithful Icelandic horse »Faxi« is now succeeded by ICELANDAIR's modern VISCOUNTS.



COMPARATIVE TIMES

Hours fast (+) or slow (-) of Greenwich Mean Time (GMT).

- ICELAND
- Until 22/10 GMT
 - From 22/10 + 1
 - Austria + 1
 - Belgium + 1
 - Czechoslovakia + 1
 - Denmark + 1
 - Finland + 2
 - France + 1
 - Germany + 1
 - Great Britain
 - Until 29/10 + 1
 - From 29/10 GMT
 - Greenland + 3
 - Italy + 1
 - Netherlands + 1
 - Norway
 - Until 17/9 + 2
 - From 17/9 + 1
 - Poland + 1
 - Spain + 1
 - Sweden + 1
 - U. S. S. R. + 3

3 REYKJAVIK-COPENHAGEN

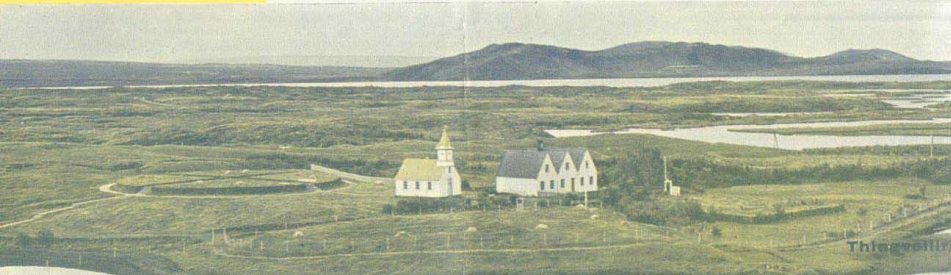
ICELANDAIR VISCOUNT	FI-230	FI-230	FI-230	FI-210	FI-230	FI-230	FI-230	FI-220	FI-230
Frequency	①	②	③	④	⑤	⑥	⑦	⑧	⑨
First day of operation	10/4	6/6	5/4	7/6	4/5	7/4	17/6	1/4	14/5
Last day of operation	30/10	31/10	6/9	4/10	26/10	27/10	23/9	28/10	1/10
Reykjavik Dep	08.00	08.00	08.00	08.30	08.00	08.00	08.00	10.00	08.00
Copenhagen Arr	14.55	14.55	14.55	15.15	14.55	14.55	14.55	16.35	14.55

FI-230 via Glasgow FI-210 & FI-220 via Oslo

4 COPENHAGEN-REYKJAVIK

ICELANDAIR VISCOUNT	FI-231	FI-231	FI-231	FI-211	FI-231	FI-231	FI-231	FI-221	FI-231
Frequency	①	②	③	④	⑤	⑥	⑦	⑧	⑨
First day of operation	10/4	6/6	5/4	7/6	4/5	7/4	17/6	2/4	14/5
Last day of operation	30/10	31/10	6/9	4/10	26/10	27/10	23/9	29/10	1/10
Copenhagen Dep	16.50	16.50	16.50	18.55	16.50	16.50	16.50	11.30	16.50
Reykjavik Arr	22.30	22.30	22.30	23.55	22.30	22.30	22.30	16.40	22.30

FI-231 via Glasgow FI-211 & FI-221 via Oslo



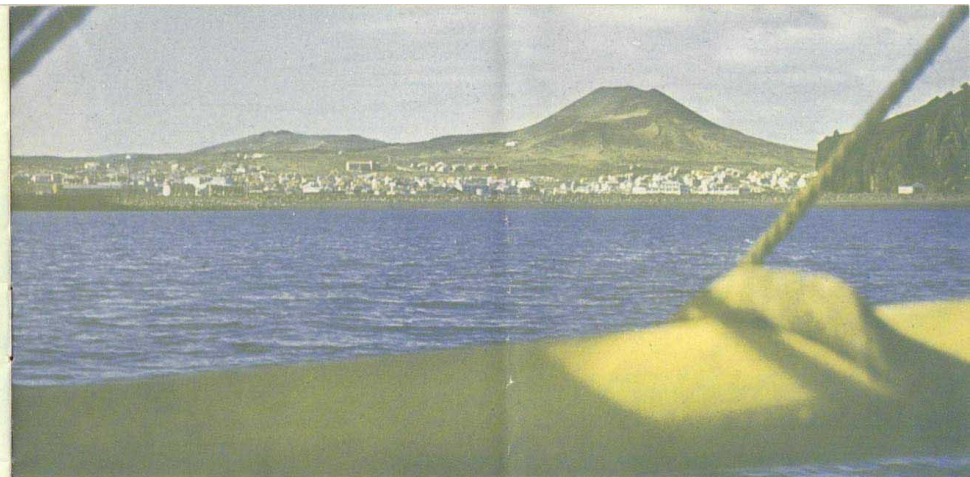
Thingvallir



5 ICELAND - GREAT BRITAIN - FRANCE

ICELANDAIR VISCOUNT	FI-230	FI-230	FI-230	FI-230	FI-230	FI-230	FI-230	FI-200
Frequency	①	②	③	④	⑤	⑥	⑦	⑧
First day of operation	10/4	6/6	5/4	4/5	7/4	17/6	14/5	16/6
Last day of operation	30/10	31/10	6/9	26/10	27/10	23/9	1/10	29/9
Reykjavik	Dep 08.00	08.00	08.00	08.00	08.00	08.00	08.00	10.00
Glasgow	Arr 12.00	12.00	12.00	12.00	12.00	12.00	12.00	
London	Dep							15.00
London	Dep							15.45
Paris*	Arr							16.55
CONNECTING SERVICES		VISCOUNT Daily BE 903		VANGUARD Daily BE 352				
Glasgow	Dep		12.55					
London	Arr		14.25					
London	Dep				16.00			
Paris	Arr				17.00			

*) Subject to Government approval



Civilization seeks refuge in nature's might.

See and sit in comfort! It's said of the VISCOUNT's panorama windows that "Every window is a photo-window". You have a lovely view from the luxurious, adjustable seats, and you'll enjoy the steady trip - high above the weather.



6 FRANCE - GREAT BRITAIN - ICELAND

CONNECTING SERVICES	CARAVELLE Daily AF 809		VISCOUNT Daily BE 904					
Paris	Dep 16.15							
London	Arr 17.10							
London	Dep							18.05
Glasgow	Arr							19.40
ICELANDAIR VISCOUNT	FI-231	FI-231	FI-231	FI-231	FI-231	FI-231	FI-231	FI-201
Frequency	①	②	③	④	⑤	⑥	⑦	⑧
First day of operation	10/4	6/6	5/4	4/5	7/4	17/6	14/5	16/6
Last day of operation	30/10	31/10	6/9	26/10	27/10	23/9	1/10	29/9
Paris*	Dep 17.20							18.30
London	Arr 18.30							20.10
London	Dep							
Glasgow	Dep 20.20	20.20	20.20	20.20	20.20	20.20	20.20	
Reykjavik	Arr 22.30	22.30	22.30	22.30	22.30	22.30	22.30	23.30

*) Subject to Government Approval

7 REYKJAVIK-HAMBURG

ICELANDAIR VISCOUNT	FI-210	FI-220	FI-230	FI-230	FI-230	FI-230	FI-230	FI-230
Frequency	①	②	③	④	⑤	⑥	⑦	⑧
First day of operation	7/6	1/4	10/4	6/6	5/4	4/5	7/4	14/5
Last day of operation	4/10	28/10	30/10	31/10	6/9	26/10	27/10	1/10
Reykjavik	Dep 08.30	10.00	08.00	08.00	08.00	08.00	08.00	08.00
Copenhagen	Arr 14.35	18.05	14.55	14.55	14.55	14.55	14.55	14.55
Hamburg	Arr							
CONNECTING SERVICES			METROPOLITAN Daily LH 201					
Copenhagen	Dep							17.00
Hamburg	Arr							18.05

FI-230 via Glasgow FI-210 & FI-220 via Oslo and Copenhagen

8 HAMBURG-REYKJAVIK

CONNECTING SERVICES	METROPOLITAN Daily LH 201							
Hamburg	Dep 11.40							
Copenhagen	Arr 12.45							
ICELANDAIR VISCOUNT	FI-211	FI-221	FI-231	FI-231	FI-231	FI-231	FI-231	FI-231
Frequency	①	②	③	④	⑤	⑥	⑦	⑧
First day of operation	7/6	2/4	10/4	6/6	5/4	4/5	7/4	17/6
Last day of operation	4/10	29/10	30/10	31/10	6/9	26/10	27/10	23/9
Hamburg	Dep 17.30	09.45	16.50	16.50	16.50	16.50	16.50	16.50
Copenhagen	Dep 23.55	16.40	22.30	22.30	22.30	22.30	22.30	22.30
Reykjavik	Arr							

FI-231 via Glasgow FI-211 & FI-221 via Copenhagen and Oslo



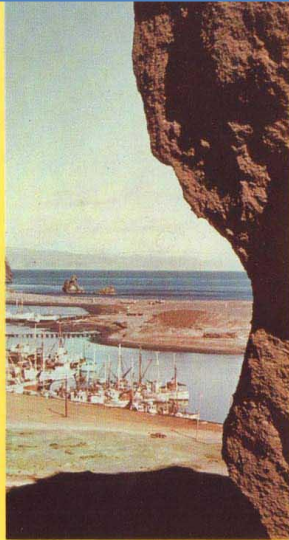
9 REYKJAVIK-OSLO

ICELANDAIR VISCOUNT	FI-210	FI-220
Frequency	③	⑥
First day of operation	7/6	1/4
Last day of operation	4/10	28/10
Reykjavik Dep	08.30	10.00
Oslo Arr	14.30	16.00

10 OSLO-REYKJAVIK

ICELANDAIR VISCOUNT	FI-211	FI-221
Frequency	③	⑦
First day of operation	7/6	2/4
Last day of operation	4/10	29/10
Oslo Dep	21.45	14.30
Reykjavik Arr	23.55	16.40

The Westman Islands — idyllic peace, holiday atmosphere...



ICELAND OFFERS RICH OPPORTUNITIES FOR INTERESTING AND VARIED PONY-TREKKING.



ICELAND, THE ISLAND OF THE SAGAS, HAS BEEN WORKED ON AND MOULDED BY THE MIGHTY FORCES OF NATURE...



THE COLOURFUL FLORA OF ICELAND IS UNIQUE — AND INCLUDES MANY RARE SPECIES.



THE RICH AND VARIED BIRD LIFE OF ICELAND AROUSES THE ENTHUSIASM OF ORNITHOLOGISTS FROM THE WHOLE WORLD.

11 OSLO-COPENHAGEN-HAMBURG

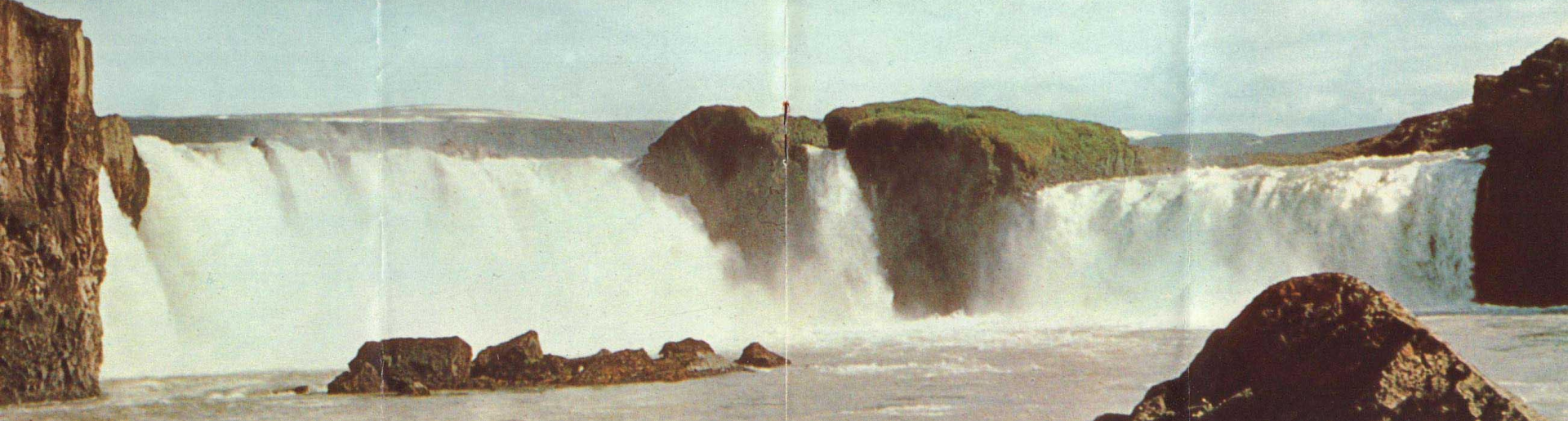
ICELANDAIR VISCOUNT	FI-210	FI-220
Frequency	③	⑥
First day of operation	7/6	1/4
Last day of operation	4/10	28/10
Oslo Dep	15.00	16.20
Copenhagen Arr	15.15	16.35
Copenhagen Dep	15.40	17.10
Hamburg Arr	16.35	18.05

12 HAMBURG-COPENHAGEN-OSLO

ICELANDAIR VISCOUNT	FI-211	FI-221
Frequency	③	⑦
First day of operation	7/6	2/4
Last day of operation	4/10	29/10
Hamburg Dep	17.30	09.45
Copenhagen Arr	18.25	10.40
Copenhagen Dep	18.55	11.30
Oslo Arr	21.20	13.55

Further information and brochures will be provided with pleasure by ICELANDAIR

Godafoss.





The following airlines are general agents abroad for ICELANDAIR:

AIR FRANCE

BRITISH EUROPEAN AIRWAYS

C. S. A.

DEUTSCHE LUFTHANSA AG

FINNAIR

K. L. M.

SABENA

SCANDINAVIAN AIRLINES SYSTEM

SWISSAIR

TRANS WORLD AIRLINES

ICELANDAIR is general agent in Iceland for the same airlines

13

REYKJAVIK-HELSINKI

ICELANDAIR VISCOUNT	FI-230	FI-230	FI-230	FI-210	FI-230	FI-230	FI-230	FI-220	FI-230
Frequency	①	②	③	④	⑤	⑥	⑦	⑧	⑨
First day of operation	10/4	6/6	5/4	7/6	4/5	7/4	17/6	1/4	14/5
Last day of operation	30/10	31/10	6/9	4/10	26/10	27/10	23/9	28/10	1/10
Reykjavik Dep	08.00	08.00	08.00	08.30	06.00	08.00	08.00	10.00	08.00
Copenhagen Arr	14.55	14.55	14.55	15.15	14.55	14.55	14.55	16.35	14.55
CONNECTING SERVICES	CAXAVELLE Daily AT 8/4								
Copenhagen Dep	18.20								
Helsinki Arr	21.00								

FI-230 via Glasgow FI-210 & FI-220 via Oslo

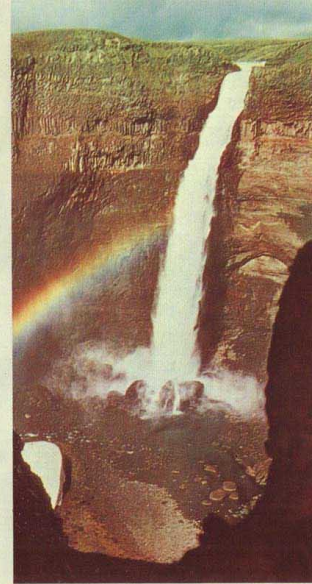
14

HELSINKI-REYKJAVIK

CONNECTING SERVICES	CAXAVELLE Daily AT 8/4								
Helsinki Dep	08.10								
Copenhagen Arr	08.55								
ICELANDAIR VISCOUNT	FI-231	FI-231	FI-231	FI-211	FI-231	FI-231	FI-231	FI-221	FI-231
Frequency	①	②	③	④	⑤	⑥	⑦	⑧	⑨
First day of operation	10/4	6/6	5/4	7/6	4/5	7/4	17/6	2/4	14/5
Last day of operation	30/10	31/10	6/9	4/10	26/10	27/10	23/9	29/10	1/10
Copenhagen Dep	16.50	16.50	16.50	18.55	16.50	16.50	16.50	11.30	16.50
Reykjavik Arr	22.30	22.30	22.30	23.55	22.30	22.30	22.30	16.40	22.30

FI-231 via Glasgow FI-211 & FI-221 via Oslo

Lake Myvatn — the Mecca of bird-watchers



Scenic Beauty — Virgin Nature.

15

REYKJAVIK-GOTHENBURG-STOCKHOLM

ICELANDAIR VISCOUNT	FI-230	FI-230	FI-230	FI-210	FI-230	FI-230	FI-230	FI-220	FI-230
Frequency	①	②	③	④	⑤	⑥	⑦	⑧	⑨
First day of operation	10/4	6/6	5/4	7/6	4/5	7/4	17/6	1/4	14/5
Last day of operation	30/10	31/10	6/9	4/10	26/10	27/10	23/9	28/10	1/10
Reykjavik Dep	08.00	08.00	08.00	08.30	08.00	08.00	08.00	10.00	08.00
Copenhagen Arr	14.55	14.55	14.55	15.15	14.55	14.55	14.55	16.35	14.55
CONNECTING SERVICES	METROPOLITAN Daily SK 4/6 CAXAVELLE Daily SK 4/10 CAXAVELLE Daily SK 5/6								
Copenhagen Dep	16.30								
Gothenburg Arr	17.30								
Stockholm Arr	17.40								
	19.20								

FI-230 via Glasgow FI-210 & FI-220 via Oslo

16

STOCKHOLM-GOTHENBURG-REYKJAVIK

CONNECTING SERVICES	CAXAVELLE Daily SK 5/1	CAXAVELLE Daily SK 6/7	METROPOLITAN Daily SK 4/5	CAXAVELLE Sunday SK 50/60/7	CAXAVELLE Daily SK 4/5
Stockholm Dep	12.00	15.35	11.55	08.30	08.45
Gothenburg Dep	13.15	16.50	12.55	09.45	09.30

ICELANDAIR VISCOUNT	FI-231	FI-231	FI-211	FI-231	FI-231	FI-231	FI-221	FI-231
Frequency	①	②	③	④	⑤	⑥	⑦	⑧
First day of operation	10/4	6/6	5/4	7/6	4/5	7/4	17/6	2/4
Last day of operation	30/10	31/10	6/9	4/10	26/10	27/10	23/9	29/10
Copenhagen Dep	16.50	16.50	16.50	18.55	16.50	16.50	16.50	11.30
Reykjavik Arr	22.30	22.30	22.30	23.55	22.30	22.30	22.30	16.40

FI-231 via Glasgow FI-211 & FI-221 via Oslo

APRIL						
						①
						1
2	3	4	5	6	7	8
9	10	11	12	13	14	15
16	17	18	19	20	21	22
23	24	25	26	27	28	29
30						

MAY						
①	②	③	④	⑤	⑥	⑦
1	2	3	4	5	6	
7	8	9	10	11	12	13
14	15	16	17	18	19	20
21	22	23	24	25	26	27
28	29	30	31			

JUNE						
①	②	③	④	⑤	⑥	⑦
4	5	6	7	8	9	10
11	12	13	14	15	16	17
18	19	20	21	22	23	24
25	26	27	28	29	30	

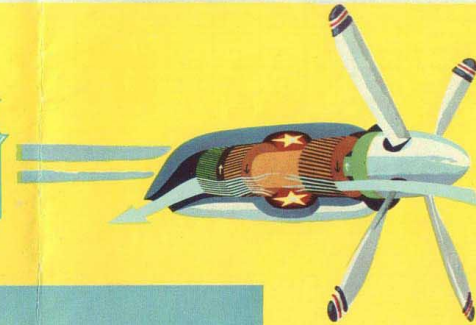
JULY						
①	②	③	④	⑤	⑥	⑦
						1
2	3	4	5	6	7	8
9	10	11	12	13	14	15
16	17	18	19	20	21	22
23	24	25	26	27	28	29
30	31					

AUGUST						
①	②	③	④	⑤	⑥	⑦
1	2	3	4	5		
6	7	8	9	10	11	12
13	14	15	16	17	18	19
20	21	22	23	24	25	26
27	28	29	30	31		

SEPTEMBER						
①	②	③	④	⑤	⑥	⑦
						1
2	3	4	5	6	7	8
9	10	11	12	13	14	15
16	17	18	19	20	21	22
23	24	25	26	27	28	29
30						

OCTOBER						
①	②	③	④	⑤	⑥	⑦
1	2	3	4	5	6	7
8	9	10	11	12	13	14
15	16	17	18	19	20	21
22	23	24	25	26	27	28
29	30	31				

The unique reliability and success of the VISCOUNT is among other things due to the high quality of the world famous Rolls Royce "Dart" engine.



SCOTLAND-SCANDINAVIA

ICELANDAIR VISCOUNT	FI-230	FI-230	FI-230	FI-230	FI-230	FI-230	FI-230
Frequency	①	②	③	④	⑤	⑥	⑦
First day of operation	10/4	6/6	5/4	4/5	7/4	17/6	14/5
Last day of operation	30/10	31/10	6/9	26/10	27/10	23/9	1/10
Glasgow Dep	12.30	12.30	12.30	12.30	12.30	12.30	12.30
Copenhagen Arr	14.35	14.35	14.35	14.35	14.35	14.35	14.35
CONNECTING SERVICES	METROPOLITAN Daily SK 416	METROPOLITAN Daily SK 416	CARAVELLE Daily SK 416	CARAVELLE Daily SK 416	CARAVELLE Daily SK 416	CARAVELLE Daily SK 416	CARAVELLE Daily SK 416
Copenhagen Dep	16.30	16.30	16.30	16.30	16.30	16.30	16.30
Gothenburg Arr	17.30	17.30	17.30	17.30	17.30	17.30	17.30
Oslo Dep	19.50	19.50	19.50	19.50	19.50	19.50	19.50
Stockholm Arr	21.00	21.00	21.00	21.00	21.00	21.00	21.00
Helsinki Arr	21.00	21.00	21.00	21.00	21.00	21.00	21.00

PASSENGER-INFORMATION

CONDITIONS OF CARRIAGE:

All carriage is subject to Icelandair's "General Conditions of Carriage of Passengers and Baggage", to the conditions of contract in the passenger ticket and to Icelandic instructions and rules. The passenger is requested to check these conditions in the passenger ticket and to those at passenger's disposal at any Icelandic office.

SCHEDULES:

All times stated in this timetable are actual local times at the place in question. The times are subject to alteration without prior notice. Passengers are therefore requested to check the times when making reservation. Icelandair endeavours to operate all their services with the maximum regularity. No responsibility, however, can be accepted for any delay or cancellation of flight nor for missed connections.

FARES:

Fares and rates published in this timetable are subject to change without prior notice.

DEPARTURES:

Prior to departure from respective cities, passengers are requested to check in at offices and at hours stated on page 8 for the purpose of completion of certain governmental procedures and such transportation to the airport. Departure will not be delayed to accommodate late passengers. Please note that ground transportation between airport and town terminals is to be paid for by the passenger.

STOP-OVERS:

Stop-overs are granted at scheduled stopping places on through journey, provided the passenger purchases the entire through ticket and specifies at the time of booking the points at which a stop-over is required. The validity of the ticket should be completed with.

INSURANCE:

Automatic passenger may obtain personal as well as luggage insurance at reasonable rates. Full details can be obtained at all Icelandair offices and travel agencies.

RESERVATIONS:

Reservations for reservations should be made well in advance, either through an Icelandair ticket office or any authorized agent. Make onward and return reservations at the same time. At destination, transfer or stop-over points you are requested to confirm your return or onward reservations.

RETURN TICKETS:

A discount of 10% of the total fare is granted on the purchase of return tickets. The discount is included in the published return fares.

CHILDREN'S FARES:

1. Infants under two years of age and not occupying individual seats are charged 10% of the adult fare, provided each infant is accompanied by an adult.

2. 50% of the adult fare is charged for children:

a. Between 2 and 12 years of age.

b. Infants under 2 years occupying individual seats, and infants in excess of the one accompanied by a passenger paying the adult fare.

The age limit shall be taken as from the date of commencement of the outward journey. Children under eight years should be accompanied by an adult unless special arrangements have been made in advance.

STUDENT FARES:

Special reduced fares are available for students over 12 and under 26 years of age attending a full time course for a school year at an educational establishment when travelling from/to their parents' residence in another country from the educational establishment abroad and return. Further details are obtainable at authorized travel agencies and at Icelandair offices.

BAGGAGE ALLOWANCE:

For passenger except children paying 10% of the full fare, is entitled to a free baggage allowance of 20 or 30 kg, according to the class of service to be used. Baggage includes all baggage in a type-weight, suit-bags, briefcases etc. whether carried in the cabin or in the cargo compartment. Checked baggage is not available during flight. All baggage, including baggage carried in the cabin is to be marked with the passenger's name and address. Please note that the weight of the baggage carried in the cabin must not exceed five kgs, and is also included in the total weight. In addition, to the free baggage allowance the passenger may carry free of charge the following personal effects: a ladies handbag or pocket-bag; an overnight bag or wrap; a hat; an umbrella or walking stick; a pair of binoculars; a small camera; a reasonable amount of reading material for the flight; infants food for consumption en route and infant's carrying basket.

Icelandair will assume no responsibility for unregistered baggage.

EXCESS BAGGAGE:

Baggage in excess of the free baggage allowance may be forwarded:

1. As excess baggage at a charge of 1% of the normal adult first class onward fare per kg.

2. As air cargo, either prior to or after the passenger's departure at ordinary cargo rates.

The carriage of baggage in excess of the free baggage allowance is subject to space being available.

FARES AND RATES

From	To	Notes	Curren-cy	Passenger Fares & Exc. Bag.				Freight Rates				From	To	Notes	Curren-cy	Passenger Fares & Exc. Bag.				Freight Rates			
				Local Currency		Local Currency		Local Currency		Local Currency						Local Currency		Local Currency		Local Currency			
				Exc. Bag. per kg	Under 45 kgs	Over 45 kgs	Min. Charge	Exc. Bag. per kg	Under 45 kgs	Over 45 kgs	Min. Charge					Exc. Bag. per kg	Under 45 kgs	Over 45 kgs	Min. Charge	Exc. Bag. per kg	Under 45 kgs	Over 45 kgs	Min. Charge
AMSTERDAM Reykjavik	2	DFL	424.—	784.—	5.30	3.39	2.55	16.95	HELINGSKI	Glasgow	1	FMK	36.650.—	66.000.—	480.—	320.—	240.—	1600.—	—	—	—	—	
BERLIN Reykjavik	—	DMK	526.—	947.—	6.75	4.90	3.70	24.50	Glasgow	1-2	—	45.750.—	82.350.—	530.—	400.—	300.—	1920.—	—	—	—	—		
BRUSSEL Reykjavik	—	BFR	5250.—	9450.—	67.—	44.—	33.—	220.—	Reykjavik	4	UKK	31.111.00	56.116.00	7/11	5/—	3/9	25/—	—	—	—	—		
COLOGNE Reykjavik	—	DMK	470.—	846.—	5.85	4.15	3.15	20.75	OSLO	—	NKR	216.—	389.—	2.20	1.85	1.40	10.75	—	—	—	—		
COPENHAGEN Reykjavik	—	DKR	427.—	769.—	5.65	3.75	2.85	18.75	Copenhagen	2	1MTH	—	384.—	692	4.65	3.05	2.30	15.25	—	—	—	—	
Glasgow	1MTH	—	183.—	330.—	2.40	1.55	1.30	10.40	Hamburg	1	—	643.—	1158.	8.05	6.45	4.85	32.25	—	—	—	—		
Oslo	—	—	210.—	378.—	2.10	1.80	1.35	10.40	Reykjavik	—	NFR	550.—	990.—	6.99	4.43	3.33	22.15	—	—	—	—		
Reykjavik	—	—	679.—	1223.—	8.50	5.70	4.30	28.50	REYKJAVIK	2	IKR	4214.—	7586.—	52.70	33/75	25.35	168.75	—	—	—	—		
DOSELDORF Reykjavik	—	DMK	470.—	846.—	5.85	4.15	3.15	20.75	Amsterdam	—	—	4769.—	8585.—	61.00	44.80	33.70	224.50	—	—	—	—		
FRANKFURT Reykjavik	—	DMK	514.—	926.—	6.45	4.60	3.45	23.00	Brussel	—	—	4001.—	7202.—	50.90	33.35	25.05	166.75	—	—	—	—		
GENEVA Reykjavik	—	SFR	574.—	1034.—	7.40	5.05	3.80	25.25	Cologne	—	—	4257.—	7663.—	52.70	37.35	28.05	186.75	—	—	—	—		
GLASGOW	—	UKK	22:00:0	39:12:0	5/10	3/11	2/11	19/7	Dusseldorf	—	—	3734.—	6722.—	46.70	31.20	23.40	156.00	—	—	—	—		
Copenhagen	1MTH	—	24:01:0	43:06:0	6/7	4/2	3/1	20/10	Frankfurt	—	—	4257.—	7663.—	52.70	37.35	28.05	186.75	—	—	—	—		
Copenhagen	—	—	—	33:19:0	—	—	—	—	Genava	—	—	5014.—	9026.—	64.50	43.95	33.—	219.75	—	—	—	—		
Gothenburg	1MTH	—	—	40:18:0	10/7	7/2	5/4	35/10	Glasgow	—	—	2667.—	4801.—	33.35	20.—	15.—	100.—	—	—	—	—		
Hamburg	3	1MTH	—	40:00:0	—	—	—	—	Gothenburg	2	—	3734.—	6722.—	46.70	35.65	26.75	178.25	—	—	—	—		
Helinski	1MTH	—	—	73:13:0	—	—	—	—	Hamburg	—	—	4257.—	7663.—	52.70	38.40	28.80	192.—	—	—	—	—		
Oslo	2	1MTH	—	51:07:0	—	—	—	—	Helinski	1-2	—	5447.—	9805.—	63.05	47.10	35.35	229.40	—	—	—	—		
Reykjavik	1MTH	—	—	36:11:0	5/10	3/11	2/11	18/7	London	—	—	3366.—	6059.—	42.10	26.70	20.05	133.50	—	—	—	—		
Reykjavik	4	1MTH	—	45:00:0	6/3	3/9	2/10	18/9	Oslo	1	—	3430.—	6174.—	42.90	34.35	25.80	171.75	—	—	—	—		
Stockholm	1MTH	—	—	31:16:0	57:05:0	8/—	5/8	4/3	Paris	—	—	4236.—	7625.—	53.90	34.15	25.65	170.75	—	—	—	—		
Stockholm	—	—	—	47:14:0	—	—	—	—	Stockholm	1	—	4478.—	8057.—	53.35	37.80	28.35	189.—	—	—	—	—		
GOTENBURG	—	—	—	—	—	—	—	—	Zurich	—	—	5105.—	9189.—	65.70	43.95	33.—	219.75	—	—	—	—		
Glasgow	1MTH	SKR	349.—	629.—	4.85	3.—	2.25	15.25	Akureyri	—	—	455.—	819.—	3.—	—	—	—	—	—	—			
Copenhagen	—	—	—	493.—	6.35	4.85	3.65	24.25	Eglistadir	—	—	645.—	1161.—	4.—	—	—	—	—	—	—			
Reykjavik	—	—	—	508.—	915.—	6.45	4.85	3.65	Isafjordur	—	—	455.—	819.—	3.—	—	—	—	—	—	—			
HAMBURG	—	—	—	—	—	—	—	—	Vestm.eyjar	—	—	230.—	414.—	2.—	—	—	—	—	—	—			
Copenhagen	3	1MTH	—	111.—	200.—	1.45	0.95	0.75	STOCKHOLM	—	—	SKR	462.—	832.—	5.80	4.10	3.10	20.50	—	—	—	—	
Glasgow	—	—	—	—	—	—	—	—	Glasgow	1MTH	—	—	609.—	1097.—	7.25	5.15	3.90	25.75	—	—	—	—	
Oslo	—	—	—	—	—	—	—	—	Reykjavik	—	—	—	—	—	—	—	—	—	—	—	—		
Reykjavik	—	—	—	—	—	—	—	—	ZORICH	—	—	SFR	585.—	1053.—	7.55	5.05	3.80	25.25	—	—	—	—	

Notes: 1 = Local Selling Fare
2 = Also via Copenhagen
3 = Via Copenhagen
4 = Valid until 30/9
1MTH = Excursion Fare
Valid 1 month.

SCANDINAVIA-SCOTLAND

CONNECTING SERVICES	CARAVELLE Daily AT 815	CARAVELLE Daily SK 351	METROPOLITAN Daily SK 416	METROPOLITAN Daily SK 416			
Helinski Dep	08.10	12.00	14.50	11.55			
Stockholm Dep	—	—	—	12.55			
Gothenburg Dep	08.55	13.15	15.35	—			
Gothenburg Arr	—	—	—	—			
ICELANDAIR VISCOUNT	FI-231	FI-231	FI-231	FI-231	FI-231	FI-231	FI-231
Frequency	①	②	③	④	⑤	⑥	⑦
First day of operation	10/4	6/6	5/4	4/5	7/4	17/6	14/5
Last day of operation	30/10	31/10	6/9	26/10	27/10	23/9	1/10
Copenhagen Dep	16.50	16.50	16.50	16.50	16.50	16.50	16.50
Glasgow Arr	19.35	19.35	19.35	19.35	19.35	19.35	19.35

ICELANDAIR OFFICES

City	Address	Telephone	Telegrams	Telex	Bus Dep. Station	Check in times Minutes before departure
COPENHAGEN	ICELANDAIR Vesterbrogade 5C	Minerva 3388	ICELAIR COPENHAGEN	5956	SAS Air Terminal	55 30
GLASGOW	ICELANDAIR 33, St. Enoch Square, C.1.	CITY 9636/9	ICELAIR GLASGOW	77500	BEA St. Enoch Square	60 30
HAMBURG	ICELANDAIR Hamburg Airport Deutsche Lufthansa Alstator 14-16	590244 591001, EXT. 202 331776	ICELAIR HAMBURG LUFTHANSA HAMBURG	13849	LUFTHANSA Alstator Hotel Reichshof	80 30
LONDON	ICELANDAIR 161 Piccadilly, W. 1.	Hyde Park 7661	ICELAIR LONDON	23689	BEA West London Air Terminal Cromwell Road	80 40
OSLO	ICELANDAIR Ruseilokkveien 6	412916	ICELAIR OSLO	1402	SAS Torden-skjoldgate	40 30
REYKJAVIK	ICELANDAIR Laugargata 4	16600	ICELAIRBOOK REYKJAVIK	—	Not provided	45

MAIN DOMESTIC SERVICES IN ICELAND

DOUGLAS DC-3 DOUGLAS DC-4 VISCOUNT				DOUGLAS DC-3				Aircraft-type				DOUGLAS DC-3 DOUGLAS DC-4 VISCOUNT				DOUGLAS DC-3			
FI 20	FI 22	FI 80	FI 26	FI 40	FI 60	FI 62	FI 68	Flight-Number	FI 21	FI 23	FI 81	FI 27	FI 41	FI 61	FI 63	FI 69			
daily	daily	1-3-4	6	2-5	daily	daily	daily	Frequency	daily	daily	1-3-4	6	2-5	daily	daily	daily			
09.00	19.30	14.45	13.15	16.05															