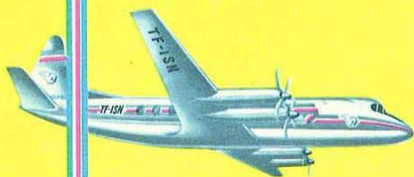




**ICELANDAIR**



**summer  
timetable 1963**



**ICELANDAIR**



**summer  
timetable 1963**

AGENT:



Valid from April 1st until  
October 31st 1963

**ICELANDAIR**

FLUGFÉLAG ÍSLANDS H.F.

Member of IATA.

THE BIGGEST LITTLE AIRLINE IN THE WORLD



visit  
**ICELAND-**  
nature's  
wonderland

**ICELANDAIR**

FLUGFÉLAG ÍSLANDS H.F.

Member of IATA



# 1 ICELAND - EUROPE

ICELANDAIR VISCOUNT	FI 230	FI 210	FI 230	FI 200	FI 230	FI 210	FI 230	FI 200	FI 230	FI 220	FI 230	
Days	MON	MON	TUE	TUE	WED	WED	THU	FRI	FRI	SAT	SAT	SUN
First day of operation	1/4	1/7	2/4	18/6	26/6	5/6	4/4	5/4	1/6	6/4	5/5	
Last day of operation	28/10	2/9	29/10	10/9	25/9	2/10	31/10	25/10	25/10	5/10	26/10	29/9
Reykjavik Dep	08.00	08.30	08.00	12.30	08.00	08.30	08.00	08.00	12.30	08.00	10.00	08.00
Glasgow Arr	12.00		12.00		12.00		12.00		12.00			12.00
Glasgow Dep	12.30		12.30		12.30		12.30		12.30			12.30
Bergen Arr										15.20		
Bergen Dep										15.45		
Oslo Arr		14.35				14.35				15.45		
Oslo Dep		15.05				15.05				16.45		
Copenhagen Arr	14.55	15.25	14.55		14.55	15.25	14.55	14.55		17.30		14.55
London Arr				17.30					17.30			

Please note: Arrival and departure times one hour earlier at Reykjavik, Glasgow and London after October 27th and at Oslo and Bergen after September 15th. All ICELANDAIR and connecting services in this timetable are TOURIST CLASS. All times LOCAL TIMES.

# 2 EUROPE - ICELAND

ICELANDAIR VISCOUNT	FI 231	FI 211	FI 231	FI 201	FI 231	FI 211	FI 231	FI 201	FI 231	FI 221	FI 231	
Days	MON	MON	TUE	TUE	WED	WED	THU	FRI	FRI	SAT	SUN	SUN
First day of operation	1/4	1/7	2/4	18/6	26/6	5/6	4/4	5/4	31/5	1/6	7/4	5/5
Last day of operation	28/10	2/9	29/10	10/9	25/9	2/10	31/10	25/10	25/10	5/10	27/10	29/9
London Dep				20.15			17.00		20.15		11.05	17.00
Copenhagen Dep	17.00	16.35	17.00		17.00	16.35	17.00		17.00		13.30	
Oslo Dep		18.00				19.00					14.00	
Oslo Arr		19.30				19.30					14.55	
Bergen Dep											15.25	
Bergen Arr											15.50	
Glasgow Dep	19.50		19.50		19.50		19.50		19.50		20.30	
Glasgow Arr	20.30		20.30		20.30		20.30		20.30		21.30	
Reykjavik Dep	22.40	21.40	22.40	23.35	22.40	21.40	22.40	22.40	23.35	22.40	16.55	22.40

Reykjavik is a modern city with 80,000 inhabitants



**Service on Board**  
Complimentary meals will be served on board at normal mealtimes. Here is a list of the meals you may expect on Icelandair's international flights:

REYKJAVIK - GLASGOW  
GLASGOW - COPENHAGEN  
COPENHAGEN - GLASGOW  
GLASGOW - REYKJAVIK  
REYKJAVIK - OSLO  
OSLO - COPENHAGEN  
COPENHAGEN - OSLO  
OSLO - REYKJAVIK  
REYKJAVIK - LONDON  
LONDON - REYKJAVIK  
REYKJAVIK - BERGEN  
BERGEN - REYKJAVIK

Breakfast  
Lunch  
Dinner  
Dinner/Light Refreshments  
Breakfast/Lunch  
Light Refreshments  
Lunch/Dinner  
Lunch/Dinner  
Lunch  
Dinner  
Breakfast/Lunch  
Light Refreshments

## PASSENGER- INFORMATION

**CONDITIONS OF CARRIAGE:**  
All carriage is subject to Icelandair's "General Conditions of Carriage of Passengers" which are available at all offices and can be found in the passenger ticket and in the "Passenger's" document and in the "Passenger's" document and in the "Passenger's" document.

**SCHEDULES:**  
All times listed in this timetable are actual local times at the place in question. Times are subject to alteration without notice. Passengers are therefore requested to check the times when making reservations. Icelandair endeavours to operate all their services with the maximum regularity. No responsibility, however, can be accepted for any delay or cancellation or flight not for missed connections.

**FARES:**  
Fares and rates published in this timetable are subject to change without prior notice.

**DEPARTURES:**  
Prior to departure from respective office, passengers are requested to check in at offices and at hours stated on page 8 for the purpose of completion of certain governmental procedures and health inspection at the airport. Departure will be delayed to accommodate late passengers. Please note that ground transportation between airport and town terminals is to be paid for by the passenger.

**STOP-OVERS:**  
Stop-overs are granted at scheduled stopping places on Icelandair flights on reasonable terms and specifies at the time of booking. Stop-overs are granted at which a stop-over is required. The validity of the ticket should be consulted.

**INSURANCE:**  
All passengers may obtain personal as well as baggage insurance on reasonable terms and conditions. Details of all individual offices and travel agencies.

**RESERVATIONS:**  
Requests for reservations should be made well in advance, either through an Icelandair ticket office or any authorized agent. Make prompt and return reservations at the same time. All cancellations, transfers or confirmations must be accompanied by the return of your ticket or unused reservation.

**RETURN TICKETS:**  
A discount of 10% of the total fare is granted on the purchase of return tickets. The discount is included in the published return fares.

**CHILDREN'S FARES:**  
1. Infants under the third of age and up to 2 years of age, occupying a separate seat, are charged 10% of the adult fare. Provided valid infant is accompanied by an adult.  
2. 50% of the adult fare is charged for children:  
a. between 2 and 12 years of age.  
b. Infants under 2 years occupying infant seats and infants accompanied by an adult. The age limit shall be taken as from the date of commencement of the outward journey. Children under eight years should be accompanied by an adult unless special arrangements have been made in advance.

**STUDENT FARES:**  
Special reduced fares are available for students over 12 and under 20 years of age attending a full time course for a student at an educational establishment when travelling from/to their parents' residence in another country to/from the country of their permanent residence. Further details are obtainable at all Icelandair travel agencies and at Icelandair office.

**BAGGAGE ALLOWANCE:**  
All passengers, except children paying 10% of the full fare, is entitled to a free baggage allowance of 20 or 25 kg depending on the class of service to be flown. Baggage includes all baggage, i.e., hand baggage, checked baggage, and baggage carried in the cabin or in the cargo compartment. Checked baggage is not available during flight. All baggage, including baggage carried in the cabin is to be checked with the passenger name and address. Please note that the weight limit for baggage is 10 kg for children not over five years and is also included in the total weight. In addition to the free baggage allowance the passenger may carry free of charge the following personal effects: a ladies handbag or pocketbook, an overcoat or wrap, one pair of binoculars or reading glasses, one small camera, a razor, one small amount of shaving soap, one toothbrush, infant food for registration en route and infant's carrying basket.

Icelandair will assume no responsibility for unregistered baggage.  
**EXCESS BAGGAGE:**  
Baggage in excess of the free baggage allowance is limited to 10 kg. The excess baggage is charged at a rate of 1% of the normal adult ticket money per kg per kg.  
2. An excess, either prior to or after the passenger's departure at another airport, is charged at a rate of 1% of the normal adult ticket money per kg per kg.  
The weight of baggage in excess of the free baggage allowance is subject to approval.

# 3 DOMESTIC SERVICES IN ICELAND

Valid 1. 5. 1963 to 1. 10. 1963

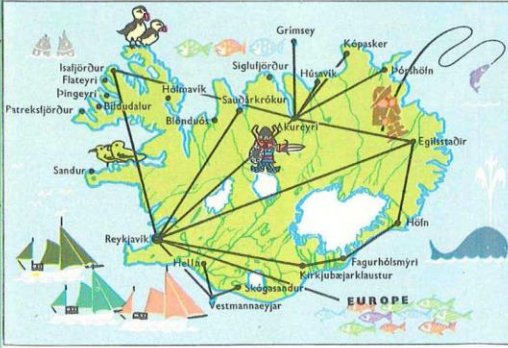
Flight Number	FI 20	FI 22	FI 24	FI 26	FI 28	FI 30	FI 38	FI 40	FI 42	FI 44	FI 46	FI 60	FI 62	FI 64	FI 66	FI 70	FI 72	FI 80
Frequency	✖	✖	⊙	⊙	⊙	⊙	⊙	⊙	⊙	⊙	⊙	⊙	✖	⊙	⊙	⊙	⊙	⊙
Reykjavik d.	09.00	19.45	13.15	13.15	17.15	15.30	13.45	09.30	19.00	14.00	09.30	08.30	18.00	08.30	08.30	11.00	13.30	15.00
Akureyri d.	10.15	21.00	14.45	14.30	18.30													
Akureyri d.			15.05	14.50	18.50													
Kópasker d.			15.40															
Kópasker d.			16.00															
Þórshöfn a.			16.20															
Sauðárkrúkur a.					16.30													
Húsavík a.								15.15										
Ísafjörður a.								10.30	19.40	15.00	10.30							
Ísafjörður a.											10.50							
Vestmannaeyjar d.												09.10	18.40	09.10	09.10			
Fagurhólsmýri d.																	12.30	
Fagurhólsmýri d.																	12.50	
Höfn a.																	13.20	
Höfn a.																	15.15	
Egilsstaðir a.							15.45	19.45									15.35	
Hella a.														09.50			16.05	
Skógasandur a.															09.45			16.30
Akureyri a.											11.50							

a) Operated from 15. 6. to 1. 9. b) Operated from 1. 6. to 1. 9. c) Operated to Egilsstaðir only from 1. 6. to 1. 9.

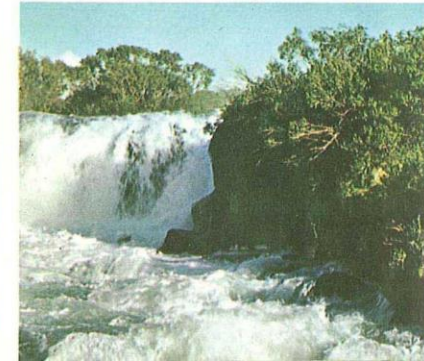
Flight Number	FI 21	FI 23	FI 25	FI 27	FI 29	FI 31	FI 39	FI 41	FI 43	FI 45	FI 47	FI 61	FI 63	FI 65	FI 67	FI 71	FI 73	FI 81
Frequency	✖	✖	⊙	⊙	⊙	⊙	⊙	⊙	⊙	⊙	⊙	⊙	✖	⊙	⊙	⊙	⊙	⊙
Akureyri d.																		
Fagurhólsmýri d.																		
Höfn a.																		
Höfn a.																		
Hella a.																		
Skógasandur d.																		
Vestmannaeyjar d.																		
Vestmannaeyjar d.																		
Ísafjörður a.																		
Ísafjörður a.																		
Húsavík d.																		
Sauðárkrúkur d.																		
Egilsstaðir d.																		
Kópasker d.																		
Þórshöfn a.																		
Þórshöfn a.																		
Reykjavik d.	10.45	21.30	18.00	17.30	21.30	18.00	17.15	22.00	21.00	16.30	14.40	10.20	19.50	11.40	11.30	15.35	19.00	18.30
Reykjavik a.	12.00	22.45	19.30	18.45	22.45	18.00	17.15	22.00	21.00	16.30	14.40	10.20	19.50	11.40	11.30	15.35	19.00	18.30

a) Operated from 15. 6. to 1. 9. b) Operated from 1. 6. to 1. 9.

All scheduled air-services in Iceland are operated by Icelandair



In Iceland you will find numerous gushing streams



#### 4 ICELAND - NORWAY - DENMARK - SWEDEN - FINLAND

ICELANDAIR VISCOUNT	FI 230	FI 210	FI 230	FI 230	FI 210	FI 230	FI 230	FI 230	FI 220	FI 230
Days	MON	MON	TUE	WED	WED	THU	FRI	SAT	SAT	SUN
First day of operation	1/4	1/7	2/4	26/6	5/6	4/4	5/4	1/6	6/4	5/5
Last day of operation	28/10	2/9	29/10	25/9	2/10	31/10	25/10	5/10	26/10	29/9
Reykjavik Dep	08.00	08.30	08.00	08.00	08.30	08.00	08.00	08.00	10.00	08.00
Bergen Arr									15.20	
Bergen Dep									15.45	
Oslo Arr		14.35			14.35				16.45	
Oslo Dep		15.05			15.05				17.10	
Copenhagen Arr	14.55	15.25	14.55	14.55	15.25	14.55	14.55	14.55	17.30	14.55
CONNECTING SERVICES	METROP. Daily SK 466	METROP. Daily SK 465	ELECTRA Daily KL 173	CARAVELLE Daily SK 522	CARAVELLE Daily SK 488	CARAVELLE Daily SK 488	CARAVELLE Daily SK 488	CARAVELLE Daily SK 488	CARAVELLE Daily SK 488	CARAVELLE Daily SK 488
Copenhagen Dep	17.50			15.50		18.00				19.05
Oslo Dep		18.50	15.10					19.20		
Gothenburg Arr										
Stockholm Arr				17.05		19.10		19.15		
Helsinki Arr										21.45

FI 231 via Glasgow

#### 5 FINLAND - SWEDEN - DENMARK - NORWAY - ICELAND

CONNECTING SERVICES	CARAVELLE Daily AY 791	CARAVELLE Daily SK 745	METROP. Daily SK 481	DC-8 Daily SK 911	METROP. Daily SK 642	METROP. Daily SK 465	METROP. Daily SK 641			
Helsinki Dep	08.05	12.50		12.45						
Stockholm Dep	08.35		11.50		12.30	15.30	12.40			
Gothenburg Dep					14.25					
Oslo Arr	10.35		14.25			16.30	13.40			
Copenhagen Arr		13.35		13.55						
ICELANDAIR VISCOUNT	FI 231	FI 211	FI 231	FI 231	FI 211	FI 231	FI 231	FI 231	FI 221	FI 231
Days	MON	MON	TUE	WED	WED	THU	FRI	SAT	SUN	SUN
First day of operation	1/4	1/7	2/4	26/6	5/6	4/4	5/4	1/6	7/4	5/5
Last day of operation	28/10	2/9	29/10	25/9	2/10	31/10	25/10	5/10	27/10	29/9
Copenhagen Dep	17.00	16.35	17.00	17.00	16.35	17.00	17.00	17.00	11.05	17.00
Oslo Arr		19.00			19.00				13.30	
Oslo Dep		19.30			19.30				14.00	
Bergen Arr									14.55	
Bergen Dep									15.25	
Reykjavik Arr	22.40	21.40	22.40	22.40	21.40	22.40	22.40	22.40	16.55	22.40

FI 230 via Glasgow

### CALENDAR

APRIL	
S	7 14 21 28
M	1 8 15 22 29
T	2 9 16 23 30
W	3 10 17 24
T	4 11 18 25
F	5 12 19 26
S	6 13 20 27


  

MAY	JUNE	JULY	
S	5 12 19 26	2 9 16 23 30	7 14 21 28
M	6 13 20 27	3 10 17 24	8 15 22 29
T	7 14 21 28	4 11 18 25	9 16 23 30
W	1 8 15 22 29	5 12 19 26	3 10 17 24 31
T	2 9 16 23 30	6 13 20 27	4 11 18 25
F	3 10 17 24 31	7 14 21 28	5 12 19 26
S	4 11 18 25	1 8 15 22 29	6 13 20 27

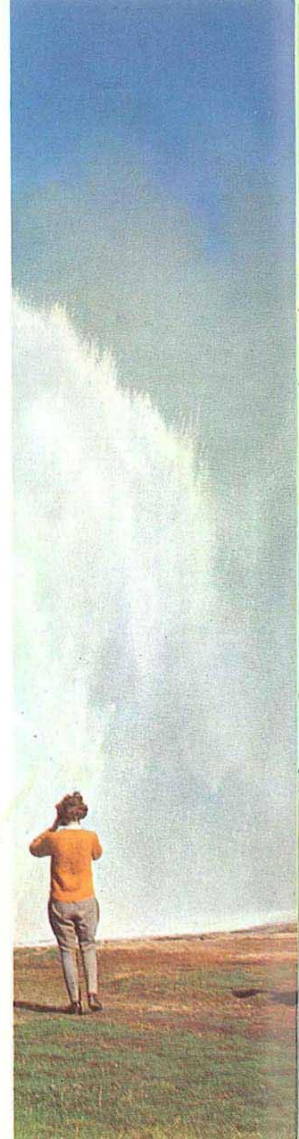
AUG	SEPT	OCT	
S	4 11 18 25	1 8 15 22 29	6 13 20 27
M	5 12 19 26	2 9 16 23 30	7 14 21 28
T	6 13 20 27	3 10 17 24	8 15 22 29
W	7 14 21 28	4 11 18 25	9 16 23 30
T	1 8 15 22 29	5 12 19 26	3 10 17 24 31
F	2 9 16 23 30	6 13 20 27	4 11 18 25
S	3 10 17 24 31	7 14 21 28	5 12 19 26

### comparative times



Hours fast (+) or slow (±) of Greenwich Mean Time (GMT)

ICELAND	Norway
Until 27.10. 1963 ... GMT	Until 14.9. 1963 ... + 2
After 28.10. 1963 ... + 1	After 15.9. 1963 ... + 1
Great Britain	Germany ... + 1
Until 27.10. 1963 ... + 1	Sweden ... + 1
After 28.10. 1963 ... GMT	Finland ... + 2
Denmark ... + 1	Greenland ... ± 3



#### FAROE ISLANDS

Subject to governmental approval, Icelandair will this summer establish regular air-routes to and from the Faroe Islands. By these new routes the Faroe Islands will be brought next-door-to Denmark, Norway, Iceland and Scotland. And then you will be able to add a beautiful and unusual holiday country to your choice of vacation resorts.

#### 6 ICELAND - FAROE ISLANDS - NORWAY - DENMARK - SCOTLAND

Flight number	FI 250	FI 240
Frequency	TUE	THU
First day of operation	7/5	9/5
Last day of operation	24/9	26/9
Reykjavik Dep	08.20	
Vaagø Arr	11.45	
Vaagø Dep	14.00	16.00
Bergen Arr	18.55	
Bergen Dep	19.30	
Copenhagen Arr	21.50	
Glasgow Arr		20.00

Flights to and from Faroe Islands are subject to Governmental approval

#### 7 SCOTLAND - DENMARK - NORWAY - FAROE ISLANDS - ICELAND

Flight number	FI 251	FI 241
Frequency	THU	FRI
First day of operation	9/5	10/5
Last day of operation	26/9	27/9
Glasgow Dep		13.30
Copenhagen Dep	09.00	
Bergen Arr	13.10	
Bergen Dep	13.40	
Vaagø Arr	14.35	15.30
Vaagø Dep	16.30	19.45
Reykjavik Arr		

#### 8 ONE-DAY SIGHTSEEING TRIP TO KULUSUK/Greenland

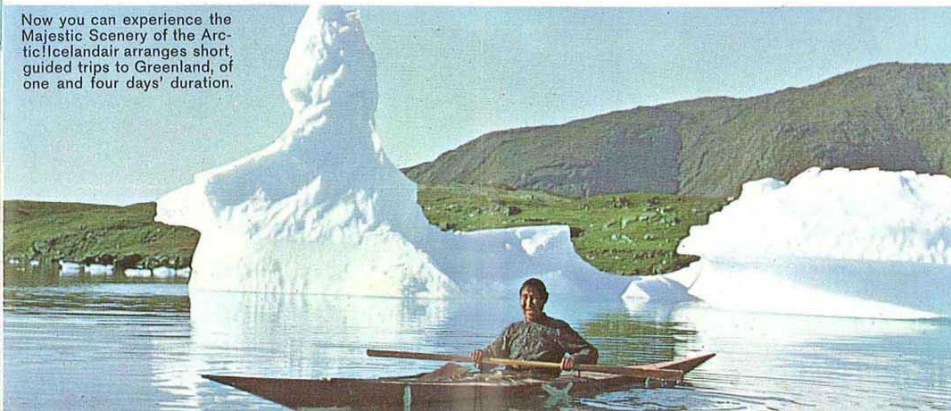
Departure dates from Reykjavik:	Price: US \$ 70.00
21st July	DEP. REYKJAVIK 10.00
28th July	ARR. KULUSUK 12.40
4th August	
11th August	
NOTE: Check-in time at Reykjavik Airport is 09.15	

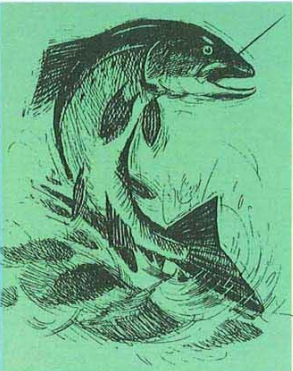
#### 9 4-DAY TRIP TO NARSSARSUAQ/Greenland

Departure dates from Reykjavik:	Price: US \$ 160.00	Arrival dates at Reykjavik:		
10th July	NOTE: Check-in time at Reykjavik Airport is 09.30	13th July		
13th July		16th July		
16th August		19th August		
19th August		22nd August		
22nd August		25th August		
10.15	DEP. ARR.	REYKJAVIK NARSSARSUAQ	ARR. DEP.	23.30
13.45				20.00

## GREENLAND

Now you can experience the Majestic Scenery of the Arctic! Icelandair arranges short, guided trips to Greenland, of one and four days' duration.





### ANGLING IN ICELAND

Many experts say that Iceland possesses some of the world's finest fishing streams. These virgin stretches of water, with their wealth of fish, are greatly in demand. Please ask for Icelandair's special brochure on angling.



### »FAXI«

The tough, strong icelandic horse has given excellent service to their masters ever since the vikings brought them along when they first went to Iceland, some thousand years ago. In all the names of Icelandair's aircrafts you will find the word »Faxi« (horse) — from the morning of time the symbol of safe transport.

## 10 ICELAND - GREAT BRITAIN - FRANCE - BELGIUM

ICELANDAIR VISCOUNT	FI 230	FI 230	FI 200	FI 230	FI 230	FI 230	FI 200	FI 230	FI 230					
Days	MON	TUE	TUE	WED	THU	FRI	FRI	SAT	SUN					
First day of operation	1/4	2/4	18/6	26/6	4/4	5/4	31/5	1/6	5/5					
Last day of operation	28/10	29/10	10/9	25/9	31/10	25/10	25/10	5/10	29/9					
Reykjavik	Dep	08.00	08.00	12.30	08.00	08.00	12.30	08.00	08.00					
Glasgow	Arr	12.00	12.00	17.30	12.00	12.00	17.30	12.00	12.00					
CONNECTING SERVICES	VANGUARD Daily BE 5033		CARAVELLE Daily AF 811		VANGUARD Daily BE 352		CARAVELLE Daily AF 819		VANGUARD Daily BE 360		CARAVELLE Daily SN 654		COMET Daily BE 474	
Glasgow	Dep	12.40												
London	Dep	14.00												
Paris	Dep		15.00		16.00		19.00		20.00		17.55		18.55	
Brussels	Arr		15.55		17.00		19.55		21.00		18.55		19.45	

\*) No flights during August

## 11 BELGIUM - FRANCE - GREAT BRITAIN - ICELAND

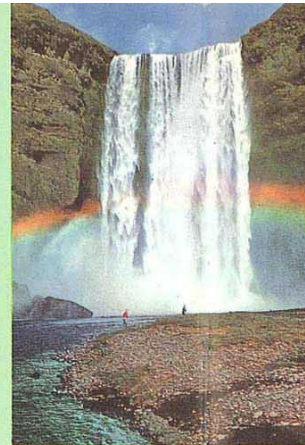
CONNECTING SERVICES	VANGUARD Daily BE 956	VANGUARD Daily BE 315	VANGUARD Daily BE 255	CARAVELLE Daily SN 655					
Brussels	Dep			15.40					
Paris	Dep		16.00						
London	Dep		17.00						
London	Dep	18.30							
Glasgow	Dep	19.50							
ICELANDAIR VISCOUNT	FI 231	FI 231	FI 201	FI 231	FI 231	FI 201	FI 231	FI 231	FI 231
Days	MON	TUE	TUE	WED	THU	FRI	FRI	SAT	SUN
First day of operation	1/4	2/4	18/6	26/6	4/4	5/4	31/5	1/6	5/5
Last day of operation	28/10	29/10	10/9	25/9	31/10	25/10	25/10	5/10	29/9
London	Dep	20.30	20.30	20.15	20.30	20.30	20.30	20.15	20.30
Glasgow	Dep	22.40	22.40	23.35	22.40	22.40	22.40	23.35	22.40
Reykjavik	Arr	22.40	22.40	23.35	22.40	22.40	22.40	23.35	22.40



### MIDNIGHT-SUN-FLIGHTS

Icelandair arranges »Flights to the Midnight Sun« from Reykjavik on 16th, 23rd and 30th June. Seeing the midnight sun from a plane is a unique experience. Duration of the flight is approx. 3 1/2 hours. Weather permitting short stop will be made on the Isle of Grimsey. (Price: £ 8.10.0 - D. kr. 166,00 - \$ 24,00 incl. canapées, champagne and a polar-certificate.)





Skogafoss

## SCOTLAND

Icelandair's modern Viscounts connect Scotland and Scandinavia in 2½ hours. Icelandair offers the quickest, easiest, and most comfortable service between Glasgow (Renfrew airport) and Copenhagen. Daily flights during peak season.

## SCANDINAVIA

## 12 SCOTLAND - SCANDINAVIA

ICELANDAIR VISCOUNT	FI 230	FI 230	FI 230	FI 230	FI 230	FI 230	FI 230
Days	MON	TUE	WED	THU	FRI	SAT	SUN
First day of operation	1/4	2/4	26/6	4/4	5/4	1/6	5/5
Last day of operation	28/10	29/10	25/9	31/10	25/10	5/10	29/9
Glasgow Dep	12.30	12.30	12.30	12.30	12.30	12.30	12.30
Copenhagen Arr	14.55	14.55	14.55	14.55	14.55	14.55	14.55
CONNECTING SERVICES	VISCOUNT Mon-Wed FI 211	METROP Daily SK 466	ELECTRA Daily KL 175	CARAVELLE Daily SK 592	CARAVELLE Daily AF 814		
Copenhagen Dep	16.35	17.50	15.50	18.00	19.05		
Gothenburg Arr	19.00	21.05					
Oslo Arr			17.05	19.10			
Stockholm Arr					21.45		
Helsinki Arr							21.45

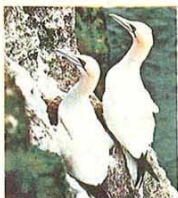
## 13 SCANDINAVIA - SCOTLAND

CONNECTING SERVICES	CARAVELLE Daily SK 745	DC-9 Daily SK 911	VISCOUNT Mon-Wed FI 210	METROP Daily SK 465	METROP Daily SK 641	FI 230	FI 230
Helsinki Dep	12.50						
Stockholm Dep		12.45					
Oslo Dep			15.05		15.10		
Gothenburg Dep				15.25	16.30		
Copenhagen Arr	13.35	13.55	15.25	16.30	13.45		
ICELANDAIR VISCOUNT	FI 231	FI 231	FI 231	FI 231	FI 231	FI 231	FI 231
Days	MON	TUE	WED	THU	FRI	SAT	SUN
First day of operation	1/4	2/4	26/6	4/4	5/4	1/6	5/5
Last day of operation	28/10	29/10	25/9	31/10	25/10	5/10	29/9
Copenhagen Dep	17.00	17.00	17.00	17.00	17.00	17.00	17.00
Glasgow Arr	19.50	19.50	19.50	19.50	19.50	19.50	19.50



Dramatic coast formations from Iceland's south coast

Iceland has a very rich and varied bird life which arouses the enthusiasm of ornithologists from the whole world. The colourful flora of Iceland is unique - and includes many rare species.



Icelandair has produced a series of brochures on the following topics: pony-trekking, flora and vegetation, geology and birdlife. These can be obtained at all our offices in English, German, French and Danish.

## 14 ICELAND - GERMANY - HOLLAND

ICELANDAIR VISCOUNT	FI 230	FI 210	FI 230	FI 200	FI 230	FI 210	FI 230	FI 200	FI 230	FI 220	FI 230	
Days	MON	MON	TUE	TUE	WED	WED	THU	FRI	FRI	SAT	SAT	SUN
First day of operation	1/4	1/7	2/4	18/6	26/6	5/6	4/4	5/4	31/5	1/6	6/4	5/5
Last day of operation	28/10	2/9	29/10	10/9	25/9	2/10	31/10	25/10	25/10	5/10	26/10	29/9
Rykyjavik Dep	08.00	08.30	08.00	12.30	08.00	08.30	08.00	08.00	12.30	08.00	10.00	08.00
Copenhagen Arr	14.55	15.25	14.55	17.30	14.55	15.25	14.55	14.55	17.30	14.55	17.30	14.55
CONNECTING SERVICES	METROP Daily LH 201	METROP Daily SK 845	CARAVELLE Daily SK 615	CARAVELLE Daily SK 553	B 720 B Daily LH 173	VISCOUNT Daily LH 159	VISCOUNT Daily BE 428					
Copenhagen Dep	16.45	22.10	18.55	17.30	18.45	18.30	19.05					
Hamburg Arr	17.55	23.15			20.00							
Frankfurt Arr	20.00											
Düsseldorf Arr				20.10								
Amsterdam Arr					18.50							

FI 210 via Oslo FI 220 via Bergen and Oslo FI 230 via Glasgow

## 15 HOLLAND - GERMANY - ICELAND

CONNECTING SERVICES	ELECT.CARAV. Daily KL 911	VISC.METRA Daily LH 200/200	CARAVELLE Daily SK 615	METROP Daily SK 622	METROP Daily SK 612	ELECT. B Daily KL 177	VISCOUNT Daily LH 154	VISCOUNT Daily BE 428
Amsterdam Dep	09.55	09.50	12.20	13.15	09.25	18.00	17.00	16.35
Düsseldorf Dep				14.20	10.30			
Hamburg Dep								
Copenhagen Dep	11.15	12.40	13.40	17.00	16.35	17.00	17.00	17.00
London Arr						19.05	18.35	17.50
ICELANDAIR VISCOUNT	FI 231	FI 211	FI 231	FI 201	FI 231	FI 211	FI 231	FI 201
Days	MON	MON	TUE	TUE	WED	WED	THU	FRI
First day of operation	1/4	1/7	2/4	18/6	26/6	5/6	4/4	5/4
Last day of operation	28/10	2/9	29/10	10/9	25/9	2/10	31/10	25/10
Copenhagen Dep	17.00	16.35	17.00	17.00	16.35	17.00	17.00	17.00
London Dep	22.40	21.40	22.40	20.15	23.35	22.40	21.40	22.40
Rykyjavik Arr	22.40	21.40	22.40	22.40	22.40	22.40	22.40	22.40

FI 211 via Oslo FI 221 via Oslo and Bergen FI 231 via Glasgow

## HOTELS RESTAURANTS TAXI STATIONS CAR-RENTAL SERVICES SOUVENIR SHOPS AND BANKS IN ICELAND

### HOTEL BORG

Situated in the heart of the City. Fully licensed.  
Telephone 11440. Telegraphic Address: Hotelborg.  
Manager: Pétur Daniellsson.  
Courtesy, comfort and good cuisine.

### HOTEL SAGA

Hagatorg 1. Telephone 20600. Telegraphic Address: Hotelsaga. Fully licensed.  
The modern hotel of comfort and courtesy.

### CITY HOTEL

Ránargata 4a. Telephone: 18650.  
Telegraphic Address: Cityhotel.  
Homely atmosphere and good service.

### HOTEL K. E. A.

Akureyri  
Telephone: 1800 (3 lines)  
Good atmosphere, friendliness and first class service.  
Fully licensed.

### Leading summer hotels

### HOTEL GARDUR

Rykyjavik  
Cables: Hotelgardur.  
Telephone 16482 & 15918.  
P. O. Box 21.  
Season: June to September.

### HOTEL BIFRÖST

Borgarfjörður.  
Situated amid unusual and striking scenery.  
Cables: Bifröst.  
Season: Middle of June to end of August.

**NAUST**  
Vesturgata 8.  
Telephone: 17758 & 17759.  
The restaurant of good food and comfort  
in a unique setting.

**BORGARBILASTÖÐIN**  
Telephone: 22440. Radio taxis.  
Twenty-four hours service.

**BADSTOFAN**  
Icelandic Tourist Bureau, souvenir department  
Hafnarstráti 23. Phone: 15531.  
Offers you selected Icelandic Souvenirs.

**SJÁLFFSTÆÐISHÚSÍÐ**  
The Restaurant in the City centre.  
Telephone 17100. Good music and gay  
atmosphere.

**HREYFILL**  
Telephone 22422. Radio taxis.  
24 hours-service.

**RAMMAGERÐIN**  
Hafnarstræti 17. Branch Hotel Saga.  
Phone: 17910.  
You will find an extensive and special  
selection of souvenirs in our shop.  
— Original Icelandic Souvenir —

**KLÚBBURINN**  
Lækjartégt 2. Telephone: 35355  
The picturesque and exclusive restaurant.  
Floor shows.

**BÆJARLEIÐIR**  
Telephone: 33500.  
Radio taxis. 24 hours service.

**LANDSBANKI ISLANDS**  
The National Bank of Iceland,  
Reykjavík.  
5 City Offices 5 Provincial Branches  
All ordinary banking business transacted.

**GLAUMBÆR**  
Frikirkjuveg 7. Telephone: 22643.  
An elegant and up to date restaurant.  
Good food, good music.

**BÍLALEIGAN FALUR**  
Brautarholt 22. Telephone 16676.  
P. O. Box 976. Cables: Rentacar.  
The most experienced Car-Rental-Service  
in Iceland. Only new cars in service.

**UTVEGSBANKI ISLANDS**  
The Fisheries Bank of Iceland,  
Reykjavík.  
2 City Offices 6 Provincial Branches  
Purchase and sale of foreign currency.  
All banking service. — Good service.

**RÖÐULL**  
Skipholt 19. Telephone: 15327.  
Fascinating and Intimate Restaurant.  
Good music and floor shows.

**BÍLALEIGAN BÍLLINN**  
Höfðatúli 4. Telephone: 18833.  
Zephyr 4, Consul »315«, Volkswagen,  
Landrover and Comet '63.  
New cars. Good cars.

**OLIUFLÉLAGIÐ SKELJUNGUR h. f.**  
Sole distributors of SHELL aviation  
products.  
Sudurlandsbraut 4. Reykjavík Tel: 38100

**B. S. R.**  
Telephone 11720.  
Radio taxis. 24 hours service.

**FARKOSTUR**  
Adalstræti 8. Telephone 20800.  
New Cars. The only car-rental-service  
in the heart of the City.

**AVIATION AND TRAVEL  
INSURANCE OUR SPECIALITY**  
Everything is insured from Icelandair's  
Fleet of Aircraft to your trunk on the  
journey. We will be pleased to offer you  
the best insurance service obtainable.  
TRYGGING h. f. (Insurance Ltd.)  
Laugavegur 17B  
PHONE 1-54-34 & 1-64-34

**STEINDOR**  
Telephones: 11580 and 24100. Radio taxis.  
24 hours service.

**ALMENNA BÍLALEIGAN**  
Klappargötu 40. Telephone: 13776.  
The most extensive rent-a-car service  
in Iceland. New cars.



## FARES AND RATES - INTERNATIONAL SERVICES

From	To	Passenger Fares & Exc. Bag Local Currency	Freight rates Local currency				From	To	Passenger Fares & Exc. Bag Local Currency	Freight rates Local currency				From	To	Passenger Fares & Exc. Bag Local Currency	Freight rates Local currency						
			per kg	40 kg	100 kg	Min. Charge				per kg	40 kg	100 kg	Min. Charge				per kg	40 kg	100 kg	Min. Charge			
AMSTERDAM	1	404	768	506	375	2,43	16,25	COPENHAGEN	2	239	450	240	1,85	1,40	10,75	Stuttgart	5	555	10748	72	49	37	315
BERGEN	1	302	574	306	235	1,75	11,75	COPENHAGEN	2	407	768	506	375	2,43	16,25	Växjö	5	594	11480	72	49	37	315
COPENHAGEN	1	453	836	568	415	2,85	18,75	GLASGOW	2	425	800	530	3,05	2,30	15,25	Turku	4	4763	18050	26	16	12	80
GLASGOW	1	473	889	600	435	3,00	19,50	HAMBURG	3	425	800	530	3,05	2,30	15,25	Vaasa	4	4763	18050	26	16	12	80
HAMBURG	1	473	889	600	435	3,00	19,50	HAMBURG	3	425	800	530	3,05	2,30	15,25	Zürich	4	4763	18050	26	16	12	80
REYKJAVIK	1	400	768	506	375	2,43	16,25	PARIS	3	643	1222	805	6,48	4,83	32,25	Zürich	4	4763	18050	26	16	12	80
STAVANGER	1	400	768	506	375	2,43	16,25	REYKJAVIK	1	506	1045	699	4,43	3,32	21,15	REYKJAVIK	4	570	10963	75	50	38	250
STAVANGER	1	400	768	506	375	2,43	16,25	REYKJAVIK	1	506	1045	699	4,43	3,32	21,15	STAVANGER	4	570	10963	75	50	38	250
STAVANGER	1	400	768	506	375	2,43	16,25	REYKJAVIK	1	506	1045	699	4,43	3,32	21,15	STAVANGER	4	570	10963	75	50	38	250
STAVANGER	1	400	768	506	375	2,43	16,25	REYKJAVIK	1	506	1045	699	4,43	3,32	21,15	STAVANGER	4	570	10963	75	50	38	250
STAVANGER	1	400	768	506	375	2,43	16,25	REYKJAVIK	1	506	1045	699	4,43	3,32	21,15	STAVANGER	4	570	10963	75	50	38	250
STAVANGER	1	400	768	506	375	2,43	16,25	REYKJAVIK	1	506	1045	699	4,43	3,32	21,15	STAVANGER	4	570	10963	75	50	38	250
STAVANGER	1	400	768	506	375	2,43	16,25	REYKJAVIK	1	506	1045	699	4,43	3,32	21,15	STAVANGER	4	570	10963	75	50	38	250
STAVANGER	1	400	768	506	375	2,43	16,25	REYKJAVIK	1	506	1045	699	4,43	3,32	21,15	STAVANGER	4	570	10963	75	50	38	250
STAVANGER	1	400	768	506	375	2,43	16,25	REYKJAVIK	1	506	1045	699	4,43	3,32	21,15	STAVANGER	4	570	10963	75	50	38	250
STAVANGER	1	400	768	506	375	2,43	16,25	REYKJAVIK	1	506	1045	699	4,43	3,32	21,15	STAVANGER	4	570	10963	75	50	38	250
STAVANGER	1	400	768	506	375	2,43	16,25	REYKJAVIK	1	506	1045	699	4,43	3,32	21,15	STAVANGER	4	570	10963	75	50	38	250
STAVANGER	1	400	768	506	375	2,43	16,25	REYKJAVIK	1	506	1045	699	4,43	3,32	21,15	STAVANGER	4	570	10963	75	50	38	250
STAVANGER	1	400	768	506	375	2,43	16,25	REYKJAVIK	1	506	1045	699	4,43	3,32	21,15	STAVANGER	4	570	10963	75	50	38	250
STAVANGER	1	400	768	506	375	2,43	16,25	REYKJAVIK	1	506	1045	699	4,43	3,32	21,15	STAVANGER	4	570	10963	75	50	38	250
STAVANGER	1	400	768	506	375	2,43	16,25	REYKJAVIK	1	506	1045	699	4,43	3,32	21,15	STAVANGER	4	570	10963	75	50	38	250
STAVANGER	1	400	768	506	375	2,43	16,25	REYKJAVIK	1	506	1045	699	4,43	3,32	21,15	STAVANGER	4	570	10963	75	50	38	250
STAVANGER	1	400	768	506	375	2,43	16,25	REYKJAVIK	1	506	1045	699	4,43	3,32	21,15	STAVANGER	4	570	10963	75	50	38	250
STAVANGER	1	400	768	506	375	2,43	16,25	REYKJAVIK	1	506	1045	699	4,43	3,32	21,15	STAVANGER	4	570	10963	75	50	38	250
STAVANGER	1	400	768	506	375	2,43	16,25	REYKJAVIK	1	506	1045	699	4,43	3,32	21,15	STAVANGER	4	570	10963	75	50	38	250
STAVANGER	1	400	768	506	375	2,43	16,25	REYKJAVIK	1	506	1045	699	4,43	3,32	21,15	STAVANGER	4	570	10963	75	50	38	250
STAVANGER	1	400	768	506	375	2,43	16,25	REYKJAVIK	1	506	1045	699	4,43	3,32	21,15	STAVANGER	4	570	10963	75	50	38	250
STAVANGER	1	400	768	506	375	2,43	16,25	REYKJAVIK	1	506	1045	699	4,43	3,32	21,15	STAVANGER	4	570	10963	75	50	38	250
STAVANGER	1	400	768	506	375	2,43	16,25	REYKJAVIK	1	506	1045	699	4,43	3,32	21,15	STAVANGER	4	570	10963	75	50	38	250
STAVANGER	1	400	768	506	375	2,43	16,25	REYKJAVIK	1	506	1045	699	4,43	3,32	21,15	STAVANGER	4	570	10963	75	50	38	250
STAVANGER	1	400	768	506	375	2,43	16,25	REYKJAVIK	1	506	1045	699	4,43	3,32	21,15	STAVANGER	4	570	10963	75	50	38	250
STAVANGER	1	400	768	506	375	2,43	16,25	REYKJAVIK	1	506	1045	699	4,43	3,32	21,15	STAVANGER	4	570	10963	75	50	38	250
STAVANGER	1	400	768	506	375	2,43	16,25	REYKJAVIK	1	506	1045	699	4,43	3,32	21,15	STAVANGER	4	570	10963	75	50	38	250
STAVANGER	1	400	768	506	375	2,43	16,25	REYKJAVIK	1	506	1045	699	4,43	3,32	21,15	STAVANGER	4	570	10963	75	50	38	250
STAVANGER	1	400	768	506	375	2,43	16,25	REYKJAVIK	1	506	1045	699	4,43	3,32	21,15	STAVANGER	4	570	10963	75	50	38	250
STAVANGER	1	400	768	506	375	2,43	16,25	REYKJAVIK	1	506	1045	699	4,43	3,32	21,15	STAVANGER	4	570	10963	75	50	38	250
STAVANGER	1	400	768	506	375	2,43	16,25	REYKJAVIK	1	506	1045	699	4,43	3,32	21,15	STAVANGER	4	570	10963	75	50	38	250
STAVANGER	1	400	768	506	375	2,43	16,25	REYKJAVIK	1	506	1045	699	4,43	3,32	21,15	STAVANGER	4	570	10963	75	50	38	250
STAVANGER	1	400	768	506	375	2,43	16,25	REYKJAVIK	1	506	1045	699	4,43	3,32	21,15	STAVANGER	4	570	10963	75	50	38	250
STAVANGER	1	400	768	506	375	2,43	16,25	REYKJAVIK	1	506	1045	699	4,43	3,32	21,15	STAVANGER	4	570	10963	75	50	38	250
STAVANGER	1	400	768	506	375	2,43	16,25	REYKJAVIK	1	506	1045	699	4,43	3,32	21,15	STAVANGER	4	570	10963	75	50	38	250
STAVANGER	1	400	768	506	375	2,43	16,25	REYKJAVIK	1	506	1045	699	4,43	3,32	21,15	STAVANGER	4	570	10963	75	50	38	250
STAVANGER	1	400	768	506	375	2,43	16,25	REYKJAVIK	1	506	1045	699	4,43	3,32	21,15	STAVANGER	4	570	10963	75	50	38	250
STAVANGER	1	400	768	506	375	2,43	16,25	REYKJAVIK	1	506	1045	699	4,43	3,32	21,15	STAVANGER	4	570	10963	75	50	38	250
STAVANGER	1	400	768	506	375	2,43	16,25	REYKJAVIK	1	506	1045	699	4,43	3,32	21,15	STAVANGER	4	570	10963	75	50	38	250
STAVANGER	1	400	768																				