

## Reservations



**R**ESERVATIONS should be secured well in advance as tickets will only be sold up to the capacity of available equipment.

Through accommodations on the return trip may be secured through the offices of Pan American Airways, Inc. at principal cities along the air route. Thirty pounds of baggage will be carried free on each ticket. Excess baggage exceeding this allowance will be carried at poundage rates computed to destination of passenger, when capacity of airliners permits.

All connections subject to seasonal railroad schedules and may be changed without notice.

## Pan American Offices

PAN AMERICAN AIRWAYS, INC.,  
maintains central ticket offices  
at the following addresses:

PERSHING SQUARE BUILDING  
100 EAST 42ND STREET  
NEW YORK CITY



44 BISCAYNE BOULEVARD  
MIAMI, FLORIDA



HOTEL SEVILLA-BILTMORE ARCADE  
HAVANA, CUBA



And principal cities along the  
Airways Route

# FLY

## To CUBA and West Indies



Save one full  
business day  
to HAVANA

via

# PAN AMERICAN AIRWAYS

# Through Rail-Air Service to Havana, Porto Rico, Nassau



## Time is Money!

**T**HIS old, trite adage is still the basic reason for American business supremacy.

When railroading came into existence, the American business man was quick to see the time-saving utility of the new and faster mode of travel. Railroads conserved his time.

Extra time meant—and still means—improved business and increased profits.

The progressive and farsseeing man forged ahead while his slower witted competitor continued to use the stage coach and wondered why his business fell behind.

And to-day, Pan American Airways, Inc. has a new service to offer to the up-to-date business man, which will further increase his effectiveness and efficiency.

Not a new mode of travel to replace the railroad, but a combined and augmented RAIL-AIR service.

The same efficient transport system which for the past year has sped your mail to Havana 24 hours faster than any other way, has been expanded by a fleet of de luxe, multi-motored airliners.

## Save a Business Day

**B**EGINNING January 7, 1929, by arrangement with Atlantic Coast Line Railroad and Florida East Coast Railway, three *daily*, de luxe trains out of New York City—Havana Special, Palmetto Limited and Florida Express—will offer through RAIL-AIR service to Havana (Train to Plane transfer at Miami).

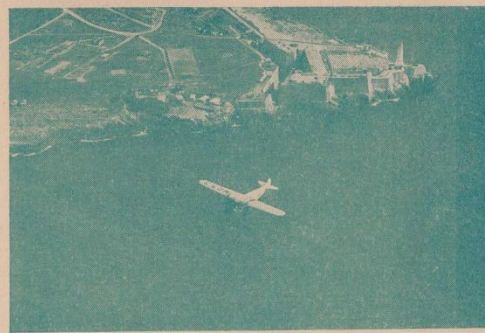
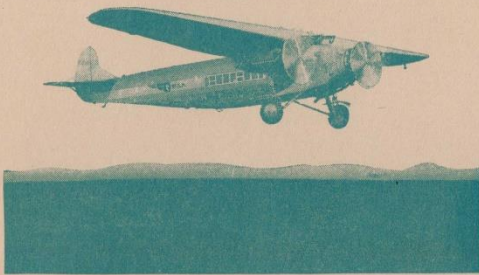
*THREE faster services from New York to Havana in place of ONE!*

In addition, three days each week, the daily Miami-Havana aerial system will be further augmented by airliners from Miami through Camaguey, Santiago de Cuba, Port au Prince, Santo Domingo and San Juan with the same through rail connections from New York City.

Thirty-three and one half hours are saved between Miami and Santiago de Cuba en route to the West Indies! And flying time from Santiago to San Juan, with stops at Port au Prince and Santo Domingo, is only 6 hours additional.

Not only from New York City, but from all principal cities in the U. S. through RAIL-AIR accommodations may be secured to any point on the airway route.

Tickets and reservations may be secured on application to any Railway ticket office.



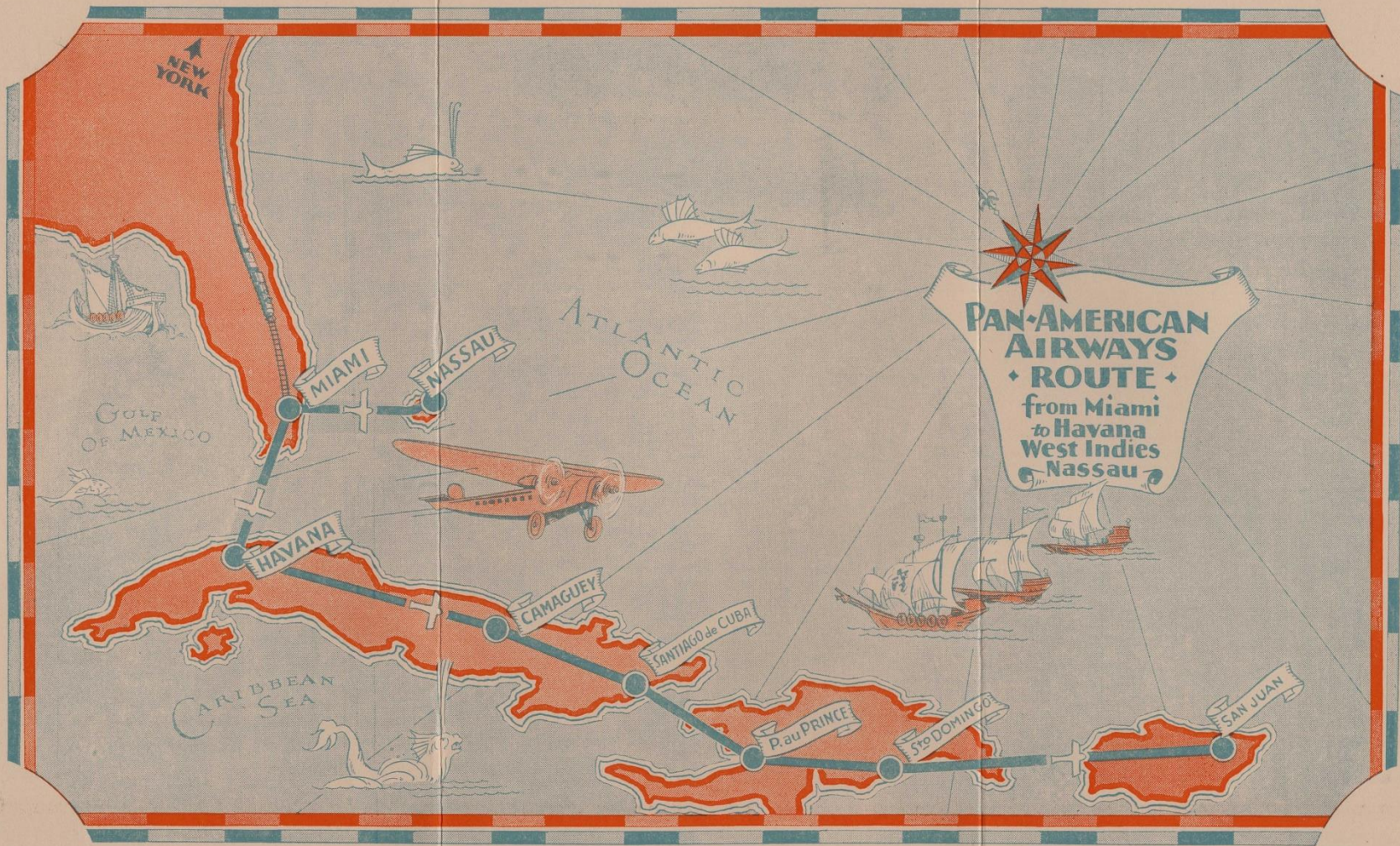
## Radio-Equipped Airliners

**P**AN AMERICAN AIRWAYS is one of the most completely equipped air systems in the world.

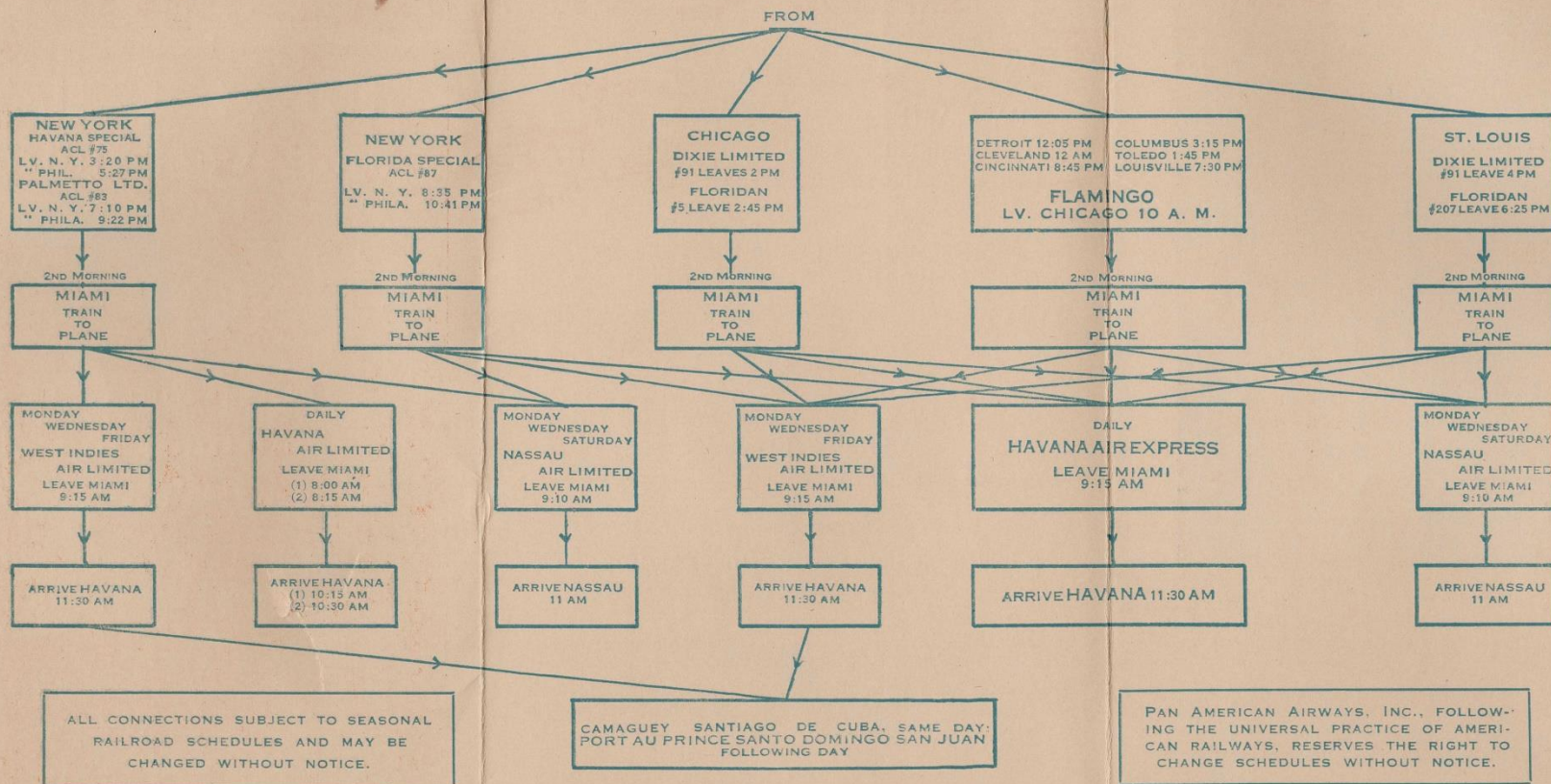
The business man will not fail to appreciate the painstaking courtesy of the personnel of Pan American. From the expeditious dispatch with which he is aided through the customs formalities to the moment that he steps from the plane to the waiting motor car at his destination, not a detail has been overlooked which could increase his security, speed or comfort.

All Pan American airliners are giant, trimotored, 12 or 14 passenger, cabin monoplanes. They are radio-equipped, and have an average speed of 125 miles per hour. Buffet and steward service, complete toilet facilities, running water, commodious lounge chairs, full vision windows, special mail and baggage compartments are among the many conveniences which they offer.

Pan American Airways are well known and highly respected by your West Indian clients and will amplify your prestige with them.



# Through Rail-Air Service to Havana—Nassau—West Indies



## Passenger Regulations

Passengers are subject to the usual customs, immigration and public health regulations at destinations, and to the regulations regarding transportation of specific articles, goods, and persons officially prohibited by the countries on the airways route. Complete information regarding such requirements is available at any office of Pan American Airways, Inc.

## Schedule and Map