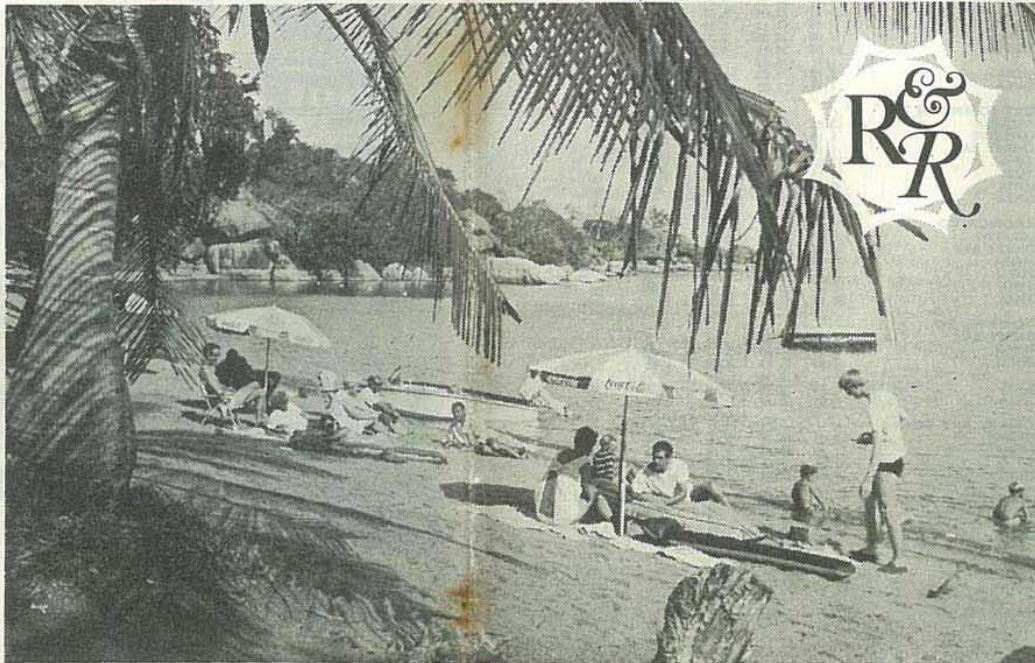


Rest & Relax

on an Air Malawi Skylake Holiday



A wonderful new holiday paradise—right on the doorstep!

Malawi—the friendly neighbour now has new hotels and new aircraft on new routes all for your next holiday.

Discover for yourself the unspoiled beauty of mountain, forest and plateaux that is Malawi. Miles of clean sandy beaches fringe the clear safe waters of magnificent Lake Malawi. The

water-lovers safest venue in Africa with sailing, waterskiing, fishing and under-water goggling at shoals of colourful tropical fish. There is something for everyone in Malawi.

Enjoy this away-from-it-all vacation wonderland—you'll be surprised how little it costs! All-inclusive fares cover your flight, road or air transport to the Lake resorts, accommodation with all main meals and exciting side trips.

air malawi



TIMETABLE

1st November, 1970

Member of International



Air Transport Association

Quality in Air Transport

General Information

BOOKINGS

It is advisable to make all Bookings well in advance through Travel Agents or the Airline Booking Offices. Cables and telegraphic charges in respect of bookings are normally your responsibility.

RETURN AND ONWARD BOOKINGS

Return journey reservations should be checked as soon as possible after your outward journey. Similarly, if you are stopping off at any point you are requested to check your onward booking as soon as possible.

STOPOVERS

You may normally break your journey without extra charge, provided it is completed within the period of validity of your ticket and that you notify us when the booking is made. Hotel expenses are, of course, your own responsibility at voluntary stopover points.

CANCELLATION OF BOOKINGS

If you have to cancel your reservations, please let us know as soon as possible and return your ticket. We cannot guarantee any refund when reservations are cancelled at short notice or if you fail to tell us that you cannot take up your reservation. This particularly applies to Domestic Services.

YOUR TICKET

Your ticket is valid only for the date and Flight shown thereon and, unless otherwise stated, the return validity is one year from date of outward travel.

LOW-COST TRAVEL

EXCURSION fares, ASSOCIATED GROUP TRAVEL CONCESSIONS and REDUCTIONS for STUDENTS are available in certain circumstances.

YOUR FARE INCLUDES

Carriage by air from airport of embarkation to airport of destination and free baggage allowance, all meals and light refreshments during flight. Hotel accommodation, meals and ground transport are usually provided at nightstays and on transfer to direct connecting services up to a maximum of 24 hours.

Hotel accommodation and meals will not be provided for interline passengers at connecting points for journeys performed wholly within the area comprising:

Rhodesia, Malawi and Zambia, the Republic of South Africa and South West Africa, Portuguese East Africa and the Republic of the Congo.

Hotel accommodation at most destinations is very limited. However, the airline will, on request, assist wherever possible. Incidental expenses are payable by the passenger.

All fares shown are subject to alteration without prior notice.

CHILDREN AND INFANTS

An infant under two years of age accompanied by an adult and not occupying a separate seat is charged 10% of the published fare.

Additional infants under two accompanying the same adult, an infant under two occupying a separate seat, and children aged two, but under twelve, are charged half fare. Age is taken as at the date of departure of the initial outward flight.

UNACCOMPANIED CHILDREN

Children may travel unaccompanied, subject to certain conditions, with the permission of their parent or guardian. In the child's interest the airline requires that he/she be escorted to the airport of departure and met at the airport of arrival and that the name and address of the escort be given at the time of reservation. Please apply to any of the airline's offices.

PERSONAL BELONGINGS

We request you to take special care, especially at transit stops, of personal articles and of unchecked baggage, as the Airline cannot accept responsibility for them.

EXCESS BAGGAGE

Baggage in excess of your free allowance (economy and tourist 20 kgs, 44 lb. First Class 30 Kgs., 66lb.) may be sent in advance at considerably cheaper rates than when travelling with you. Details from all Airline offices. Baggage in excess of free allowance is charged for at a published tariff but is carried only subject to space being available. This particularly applies to BN Islander, CS5 and other light aircraft.

CONDITIONS OF CARRIAGE

The General Conditions of Carriage are available for inspection at any of our Airline offices or at the Airport.

The Airline's timetables show the local airport times of aircraft arrivals and departures, but are subject to alteration without prior notice. Every effort is made to ensure punctuality of these schedules, but the Airline cannot accept responsibility for any delays to, or suspension of, schedules and does not guarantee connections with any other services.

GOVERNMENT REGULATIONS

Please remember that it is your responsibility to comply with Customs, Passport, Currency and Health regulations of the countries you intend to visit or transit. Air Malawi and associated airlines will hold you responsible for any costs that may be incurred in your failure to observe such regulations. Our staff will, however, be pleased to advise you on any matter on which you are in doubt.

CHECK-IN TIMES

The time shown on your flight coupon is the departure time of your flight. To enable the Airline and yourself to complete the necessary formalities you must check in before the close-off time. This can vary at different centres and you are advised to confirm this locally. For your guidance at Chileka Airport, Blantyre, the closing time for domestic flights is 30 minutes, regional flights 45 minutes, and international flights 60 minutes before departure.

SYMBOLS AND ABBREVIATIONS

QZ—Zambia Airways	QM Air Malawi	RH—Air Rhodesia
SA—South African Airways		BA—BOAC
TM—Deta Mocambique Airways		EC—East African Airways
VV—Vickers Viscount Turboprop		VC—Vickers VC10
SVC—Super VC10		BC—BAC 1-11 Turboprop
B727—Boeing 727		BN—Britten Norman Islander
C4—De Havilland Comet IV		FF—Fokker Friendship
AO—Hawker Siddeley HS748		DB—Douglas DC8
F/Y—First/Economy (Tourist) Class	B737—Boeing 737	
AOC—Passenger/Cargo Configuration	D3—DC3 Dakota	
HS 748		

AIR MALAWI OFFICES

BLANTYRE	Robins Road, P.O. Box 84. Telephone 2001.
CHILEKA	Chileka Airport. Telephone: Passenger Chileka 204 Cargo Chileka 218
JOHANNESBURG	74 Smal Street, Johannesburg. P.O. Box 10424. Telephone 221140. Telex: Johannesburg 43/0982
LILONGWE	Mandala Road, P.O. Box 89. Telephone: Lilongwe 2465.
SALISBURY	Harvest House, Baker Avenue, Salisbury, P.O. Box 2752. Telephone: 28301.
Also at Mzuzu and Karonga.	

This Timetable is published by Air Malawi, Blantyre, and is subject to amendment without prior notice.

CALENDAR

NOVEMBER							DECEMBER							JANUARY						
S.	M.	T.	W.	T.	F.	S.	S.	M.	T.	W.	T.	F.	S.	S.	M.	T.	W.	T.	F.	S.
1	2	3	4	5	6	7	1	2	3	4	5	1	2
8	9	10	11	12	13	14	6	7	8	9	10	11	12	3	4	5	6	7	8	9
15	16	17	18	19	20	21	13	14	15	16	17	18	19	10	11	12	13	14	15	16
22	23	24	25	26	27	28	20	21	22	23	24	25	26	17	18	19	20	21	22	23
29	30	27	28	29	30	31	24	25	26	27	28	29	30
														31						

FEBRUARY							MARCH							APRIL						
S.	M.	T.	W.	T.	F.	S.	S.	M.	T.	W.	T.	F.	S.	S.	M.	T.	W.	T.	F.	S.
...	1	2	3	4	5	6	...	1	2	3	4	5	6	1	2	3
7	8	9	10	11	12	13	7	8	9	10	11	12	13	4	5	6	7	8	9	10
14	15	16	17	18	19	20	14	15	16	17	18	19	20	11	12	13	14	15	16	17
21	22	23	24	25	26	27	21	22	23	24	25	26	27	18	19	20	21	22	23	24
28	28	29	30	31	25	26	27	28	29	30	...

CONTENTS

Table 1:	Malawi Domestic Services.
Table 2:	Malawi—Rhodesia.
Table 3:	Malawi—Republic of South Africa.
Table 4:	Malawi—Zambia.
Table 5:	Malawi—Mocambique—Mauritius.
Table 6:	Mainline Interchange Schedules.
Table 7:	Malawi—East Africa—Europe—Great Britain.

TABLE 1 MALAWI DOMESTIC SERVICES

Day	MONDAY			TUESDAY			WEDNESDAY		THURS.	FRIDAY			SAT.	SUN.	
	QM460	QM970	QM446	QM400	QM970	QM446	QM480	QM274	QM442	QM444	QM274	QM442	QM462	QM278	QM408
Aircraft	BN	VV	BN	BN	VV	BN	BN	AO	BN	BN	AOC	BN	BN	AO	BN
Blantyre	d 0800	0910		0615	0910		1430	1110		0730	1110		1530	1600	1300
Zomba	a d			0640 0650											
Ft. Johnston	a d 0845 0855												1615 1625		
Monkey Bay	a d Request			Day Return					Day Return				Request		
Salima	a d 0935 0945												1705	1645 1705	
Lilongwe	a d 1015	1000	1100	0800	1000	1100	1540	1200 1230	0840 0900	1200 1230			1725	1410	
Mzimba	a d		Request			Request			1010 1020						
Mzuzu	a d		1225 1245			1225 1245		1320	1400	1045 1055	1320	1400			
Chirumba	a d		Request			Request			Request			1445 1455			
Chitipa	a d								1505 1515						
Karonga	a		1345			1345			1545	1155		1520			

TABLE 1 MALAWI DOMESTIC SERVICES

Day	MON.	TUESDAY				WEDNESDAY		THURS.	FRIDAY		SATURDAY		SUNDAY	
	QM971	QM481	QM441	QM971	QM401	QM443	QM275	QM445	QM443	QM275	QM447	QM461	QM279	QM463
Aircraft	VV	BN	BN	VV	BN	BN	AO	BN	BN	AOC	BN	BN	AO	BN
Karonga	d		0715			1115		1315	1115		0700			
Chitipa	a d					1145 1155								
Chirumba	a d		Request					Request	1140 1150		Request			
Mzuzu	a d		0815 0835			1300	1350	1415 1430	1235	1350	0800 0820			
Mzimba	a d		Request					1455 1505			Request			
Lilongwe	a d 1045	0815	1000	1045	1600	1440 1510	1615 1635	1440 1510	0945 1005			1335	1530	
Salima	a d									Request	1350	1355 1415	1600 1610	
Monkey Bay	a d										Request		Request	
Ft. Johnston	a d		Day Return									1430 1440	1650 1700	
Zomba	a d				1710 1720									
Blantyre	a 1135	0925		1135	1745	1600	1745	1600	1115	1525	1500	1745		

Request: Aircraft will Call for Prebooked Passengers only.

TABLE 2 MALAWI - RHODESIA

Day		MONDAY	TUES.	WEDNESDAY			THURSDAY		FRIDAY		SAT.	SUNDAY		
Flight		RH865	QM935	QM937	RH875	RH861	QM235	RH873	QM935	RH867	QM229	QM225	RH863	QM933
Aircraft		VV	VV	VV	VV	VV	AO	VV	VV	VV	AO	AO	VV	VV
Blantyre	<i>d</i>	1330	1800	1225	1100	1600	1800	1130	1800	1400	1715	1615	1430	1545
Salisbury	<i>a</i>	1450	1925	1350	1220	1720	1925	1250	1925	1520	1840	1740	1550	1710
	<i>d</i>	RH849 1530		RH843 1815		RH843 1815		RH843 1815		RH847 1615		RH845 1845		RH845 1845
Bulawayo	<i>a</i>	1630		1915		1915		1915		1715		1945		1945

TABLE 2 RHODESIA - MALAWI

Day		MONDAY		TUESDAY		WEDNESDAY		THURSDAY		FRIDAY		SAT.	SUNDAY	
Flight		QM938	RH840	QM938	RH838	RH838	RH832	QM238	RH838	QM938	RH840	RH840	RH640	RH832
Aircraft		VV	VV	VV	VV	VV	VV	AO	VV	VV	VV	VV	D3	VV
Bulawayo	<i>d</i>		0830		0730	0730	0900		0730		0830	0830	0700	0900
Salisbury	<i>a</i>		0930		0830	0830	1000		0830		0930	0930	0830	1000
	<i>d</i>	0700	RH864 1110	0700	QM934 1430	RH866 0900	RH860 1405	0700	RH866 0900	0700	RH870 1135	QM230 1340	QM224 0900	RH862 1200
Blantyre	<i>a</i>	0825	1230	0825	1555	1000	1525	0825	1020	0825	1255	1505	1025	1320

TABLE 3 MALAWI - REPUBLIC OF SOUTH AFRICA

Day	MONDAY		TUESDAY		WEDNESDAY		THURSDAY		FRI.	SATURDAY		SUN.
Flight	SA171		QM937		QM002		RH873		QM229	QM006		QM933
Aircraft	B737		VV		BAC		VV		AO	BAC		VV
Blantyre	d	1400		1225		1035		1130		1715	1600	1545
Salisbury	a			1350				1250		1840		1710
	d			RH725 1500				SA021 1415		RH739* 2000		SA027 2000
Johannesburg	a	1610		1730		1245		1545		2230	1810	2225
	d	SA513	SA325	SA517	SA327	SA315	SA511	SA321	SA513		SA517	SA327
Durban	d	1705	1800	1905	1930	1500	1605	1700	1705		1905	1930
Durban	a	1755	(a)	2000				1700		1755	2000	2125
Cape Town	a		2030		2125	1655		1855				

(a) via Bloemfontein.

*Coach Class

TABLE 3 REPUBLIC OF SOUTH AFRICA - MALAWI

Day	MONDAY		TUESDAY		WEDNESDAY		THURSDAY		FRI.	SATURDAY		SUNDAY	
Flight	SA300	SA502	SA302	SA504	SA310	SA506	SA316	SA512		SA328	SA504	SA310	SA506
Aircraft	B737	B737	B737	B727	B727	B727	B727	B737		B727	B727	B727	B727
Cape Town	d	0715		0715		1115		1430		0715		1115	
Durban	d	(a)	0830	(b)	0930		1030	(a)	1530		0930		1030
Johannesburg	a	0945	0925	0950	1020	1255	1120	1650	1625		0855	1020	1255
	d		SA170		RH734		QM003		RH726		SA024		QM007
Salisbury	a				1340				2055		1240		
	d				QM934 1430				QM938 0700		QM230 1340		
Blantyre	a		1305		1555		1555		0820		1505		1600

(a) Via Bloemfontein

(b) Via Kimberley.

TABLE 4 MALAWI - ZAMBIA

Day	MONDAY				WEDNESDAY				SATURDAY				SUNDAY			
	Flight	QM971	QZ527	QZ402	QZ403	QM275	QM004	QZ424	QM467	QZ531	QZ402	QZ403	QM279	QM008	QZ412	
Aircraft	VV	BAC	AO	AO	AO	BAC	AO	BN	BAC	AO	AO	AO	BAC	AO		
Lilongwe	d	1045			1510				1005				1335			
Salima	a d							Request					1355 1415			
Blantyre	a d	1135	1415		1600	1655		1115	1240			1500	1700			
Lusaka	a d		1525	1630		1805	1910		1350	1630			1810	2050		
Kitwe	a d		1725	1750						1725	1750					
Ndola	a			1810			2000				1810			2140		

TABLE 4 ZAMBIA - MALAWI

Day	MONDAY			WEDNESDAY			FRIDAY			SATURDAY		
	Flight	QZ401	QZ526	QZ411	QM001	QM274	QZ401	QZ530	QM462	QZ401	QM005	QM278
Aircraft	AO	BAC	AO	BAC	AO	AO	AO	BAC	BN	AO	BAC	AO
Kitwe	d	0820					0820				0820	
Ndola	a d	0840 0910		0700			0840 0910				0840 0910	
Lusaka	a d	1000	1135	0750	0840		1000	1130			1000	1405
Blantyre	a d		1245		0950	1110		1240	1530		1515	1600
Salima	a d								1705			1645 1705
Lilongwe	a					1200						1725

TABLE 5 Mauritius - Mocambique - Malawi

Day	MONDAY	FRIDAY	SATURDAY
Flight	TM400	TM434	QZ531
Aircraft	B737	B737	BAC
Class	Y	Y	F/Y
Mauritius	d		0935
Lourenco Marques	d	1000	0700
Beira	a d	1110 QM961 1550	0810 TM 441 1445
Blantyre	a	1710	1610
			1150

TABLE 5 Malawi - Mocambique - Mauritius

Day	MONDAY	FRIDAY
Flight	QM960	QZ530
Aircraft	AO	BAC
Class	Y	F/Y
Blantyre	d	1345
Beira	a d	1505 TM401 1600
Lourenco Marques	a	1710
Mauritius	a	1955
		1715
		1840

TABLE 6 MAINLINE INTERCHANGE SCHEDULES

SOUTH AFRICA, RHODESIA, MOCAMBIQUE via MALAWI to MAURITIUS, EAST AFRICA and ZAMBIA

	MONDAY			TUESDAY			WEDNESDAY			FRIDAY			SATURDAY			SUNDAY		
Flight	RH840	SA170	QZ527	QM938	RH838	RH734	RH832	QM003	QM004	RH840	TM434	BA050	RH840	SA024	EC896	RH832	QM007	QM008
Aircraft	VV	B737	BAC	VV	VV	VV	VV	BAC	BAC	VV	B737	V10	VV	B727	C4	VV	BAC	BAC
Class	Y	Y	FY	Y	Y	Y	Y	Y	Y	Y	Y	FY	Y	Y	FY	Y	Y	Y
Johannesburg	d	(a) 1100				(a) 1115		(a) 1345						(a) 1115			(a) 1350	
Bulawayo	d	0830			0730		0900			0830			0830			0900		
Lourenco Marques	d									0700								
Beira	a									0810								
	d									TM441 1445								
Salisbury	a	0930			0830	1340	1000			0930			0930	1240		1000		
	d	RH864 1110		0700		QM934 1430	RH860 1405			RH870 1135				QM230 1340		RH862 1200		
Blantyre	a	1230	1305	0825		1555	1525	1555		1255	1610			1505		1320	1600	
				BA044 V10 FY				EC894 C4 FY		QZ530 BAC FY			QZ531 BAC FY			EC792 SVC FY		
	d			1015				1645	1655	1335		1700	1240	1645		1645	1700	
Lusaka	a		1525						1805				1350					1810
	d		QZ402 1630						QZ424 1910				QZ402 1630					QZ412 2050
Kitwe	a		1725										1725					
	d		QZ403 1750										QZ403 1750					
Ndola	a		1810						2000				1810					2140
Dar-es-Salaam	a																	1930
	d																	EC714 2030
Nairobi	a							2015					2010		2015		2140	
Entebbe	a			1335				(b)					(b)		(b)		(b)	
Mauritius	a			(b)						1955								

(a) For connections from Durban and Cape Town see Table 3. (b) for connections to Europe see Table 7.

TABLE 6 MAINLINE INTERCHANGE SCHEDULES

MAURITIUS, EAST AFRICA and ZAMBIA via MALAWI to RHODESIA MOCAMBIQUE and SOUTH AFRICA

Day	MONDAY				TUESDAY		WEDNESDAY				THURSDAY		FRIDAY			SATURDAY				SUN.
Flight	QZ401	RH865	QM960	SA171	BA041	RH843	QZ411	QM001	RH875	EC893	RH873	RH843	BA047	QZ401	TM442	QZ531	QZ401	EC895	QM225	EC719
Aircraft	AO	VV	VV	B737	V10	VV	AO	BAC	VV	C4	VV	VV	V10	AO	F7	BAC	AO	C4	AO	SVC
Class	Y	Y	Y	Y	FY	Y	Y	Y	Y	Y	Y	Y	FY	Y	Y	FY	Y	FY	Y	FY
Mauritius	d															0935				
Entebbe	d				(b) 0620															
Nairobi	d									(b) 1330			(b) 1015					(b) 1330		(b) 0830
Dar-es-Salaam	a																			0940
	d																			EC791
Kitwe	d	0820												0820			0820			
Ndola	a	0840												0840			0840			
	d	0910					0700							0910			0910			
Lusaka	a	1000					0750							1000			1000			
	d	QZ526 1135						0840						QZ530 1130			QM005 1405			
Blantyre	a	1245			0755			0950		1510			1140	1240		1150	1515	1510		1115
	d				QM937 VV Y			QM002 BAC Y		RH861 VV Y				RH867 VV Y			QM006 BAC Y		RH863 VV Y	
	d		1330	1345	1400	1225		1035	1100	1600	1130		1400	1715		1600	1615	1430		
Salisbury	a	1450			1350			1220		1720	1250			1520			1740		1550	
	d	RH849 1530			RH725 1500	1815				RH843 1815	SA021 1415	1815		RH847 1615			RH845 1845		RH845 1845	
Bulawayo	a	1630				1915				1915		1915		1715					1945	1945
Beira	a			1505										1840						
	d			TM401 1600																
L. Marques	a			1710																
Johannesburg	a			1610	1730			1245				1545						1810		
				(a)	(a)			(a)				(a)						(a)		

(a) For connections to Durban and Cape Town see Table 3.
 (b) For connections from Europe see Table 7.

Fastest, most comfortable way from Blantyre to London

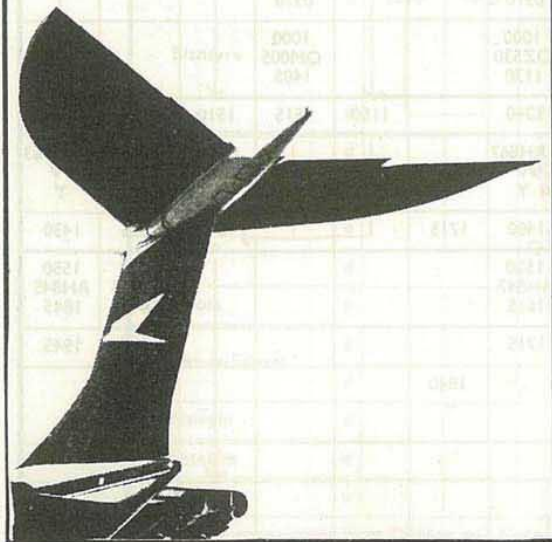
THERE'S a smile for you from the hostess. There's a plush seat waiting with open arms. And all the leg-room you want.

VC10derness! It stays with you all the way. The smoothest. The roomiest. The quietness. Next time you travel by air to Europe and London — try a little VC10derness.

TWO FLIGHTS EACH WEEK from BLANTYRE. A daylight BOAC VC10 flight from Blantyre every Tuesday morning to Entebbe, Zurich and London.

Every Friday evening the BOAC VC10 leaves Blantyre for Nairobi, Nicosia and London.

Ask your travel agent, Air Malawi or BOAC for details.



air malawi



EAST AFRICAN
International Airline of Africa

IN ASSOCIATION

TABLE 7 MALAWI - EAST AFRICA - EUROPE - GREAT BRITAIN

Day	TUES.	WEDNESDAY			FRIDAY		SATURDAY		SUNDAY	
Flight	BA044	EC894	BA026	QM004	BA050	EC718	EC896	BA032	EC792	BA034
Aircraft	V10	C4	V10	BAC	V10	SVC	C4	V10	SVC	V10
Class	F/Y	F/Y	F/Y	Y	F/Y	F/Y	F/Y	F/Y	F/Y	F/Y
Blantyre	d 1015	1645		1655	1700		1645		1645	
Lusaka	a			1805 QZ802 D8 2200						
Dar-es-Salaam	a (a)				(a)				1930 EC714 2030	
Nairobi	a	2015 EC710 SVC 2300	THUR. 0010	THUR.	2010	2300	2015 EC716 SVC 2300	SUN. 0010	2140	MON. 0010
Entebbe	a 1335 d 1415	THUR. 0001 0100			SAT. 0140 0225	SAT. 0001 0100	SUN. 0001 0100			
Nicosia	a								MON.	
Athens	a	0540 0625							0345 0430	
Rome	a		0600 0645	0550 0650			0530 0615		0530 0615	
Zurich	a 1940 d 2025							0555 0640		
Frankfurt	a					0650 0735				0625 0710
London	a 2155	0915	0800	0905	0600	0910	0840	0810	0840	0835

NOTES.— (a) No local traffic Blantyre/Entebbe or Blantyre/Nairobi. Stopover and transit traffic only these sectors.



air malawi



EAST AFRICAN
International Airline of Africa

IN ASSOCIATION

TABLE 7 GREAT BRITAIN - EUROPE - EAST AFRICA - MALAWI

Day	MON.	TUESDAY		THURSDAY			FRIDAY		SAT.
Flight	BA041	EC713	BA023	EC721	BA047	QZ803	BA029	EC723	EC719
Aircraft	V10	SVC	V10	SVC	V10	D8	V10	SVC	SVC
Class	F/Y	F/Y	F/Y	F/Y	F/Y	F/Y	F/Y	F/Y	F/Y
London	d 1830	1900	2015	1900	2045	2000	2015	2115	1715
Frankfurt	a		2140	2035					(b)
	d		2225	2130					
Zurich	a	1955							2010
	d	2040							2105
Rome	a		2115			2210	2330		
	d		2200			2310	SAT. 0015		
Athens	a		WED. 0050		FRI.	FRI.		SAT.	SUN.
	d		0135						
Nicosia	a	TUE.		WED.	FRI.	0155			
	d					0240			
Entebbe	a	0535			0640			0710	
	d	0620			0740			0800	
Nairobi	a		0815	0810	0840		0755	0900	0630
	d			EC 893 C4 1330		1015		EC895 C4 1330	0830
Dar-es-Salaam	a								0940
	d								EC791 SVC 1030
Lusaka	a	(a)			(a)	0910			
	d					QZ530 BAC 1130			
Blantyre	a	0755		1510		1140	1240	1510	1115

(a) No local traffic Entebbe/Blantyre, Nairobi/Blantyre. Stopover and transit traffic only on these sectors.
(b) via Paris no local traffic rights.

Fly Super VC10 Jambo Jet to U.K., Europe and the East.



Consult your Travel Agent or any
Air Malawi office.

EAST AFRICAN
International Airline of Africa

Delamere House Victoria Avenue
P.O. Box 671 Blantyre

**STANDARD BANK
TRAVELLERS'
CHEQUES**

safe and acceptable anywhere



London



India



**THE
STANDARD
BANK**
Registered Commercial Bank



Air Malawi acts as General Sales Agents for the following airlines:—

- Alitalia
- Air Comores
- Air Afrique
- Air Canada
- Air Rhodesia
- Air France
- Airlinte Eireann
- Air India
- Aer Lingus
- Ansett Airlines of Australia
- B.O.A.C.
- British United Airways
- Canadian Pacific Airlines
- D.E.T.A. Mocambique Airlines
- East African Airways Corporation
- El Al (Israeli Airlines)
- Ethiopian Airlines
- Iberia Airlines of Spain
- Japan Airlines
- KLM Royal Dutch Airlines
- LOT Polish Airlines
- Lufthansa
- Olympic Airways
- Pan American Airways
- Sabena Belgian World Airlines
- Scandinavian Airlines System
- Swissair
- South African Airways
- T.A.P. Portuguese Airways
- U.T.A.
- Zambia Airways



**GET
THE
TASTE**

555
by State Express

**Available on
Air Malawi Flights**

NOTICE: Malawi will convert to Decimal Currency in February, 1971 the units will be (K) Kwacha and (t) tambala Kwacha — 100 tambala

SPECIMEN FARES AND RATES
Fares shown are in Malawi Currency
ECONOMY AND TOURIST CLASS

From/To	Normal Fares		Excursion Fares		Exc. Bag. Per Kilo.	Days	s	d
	Single	Return	Return	Validity				
BLANTYRE TO (MWZ)	£ s	£ s	£ s	Days				
BEIRA	11.14	23.08	16.14	3-7 (D)			2.04	
BULAWAYO	22.06	44.12	35.14	0-4			5.04	
CAPE TOWN	59.19	119.18	97.16	10-120			14.04	
DAR-ES-SALAAM	28.12	57.04	36.04	13-45			6.10	
DURBAN	47.00	94.00	71.17	10-120			11.01	
JOHANNESBURG	36.16	73.12	51.10	10-120			8.10	
LONDON	157.11	315.02	267.04	0-90			54.10	
			233.07	19-45 (A)				
			228.14	19-45 (B)				
LOURENCO MARQUES	34.15	69.10	43.10	6-30			8.04	
LUSAKA	21.05	42.10	34.00	3-7 (D)			5.04	
NAIROBI	50.04	100.08	75.06	14-30			12.00	
NDOLA	24.08	48.16	39.01	3-7 (D)			6.02	
SALISBURY	13.13	27.06	22.12	0-4			3.03	
VICTORIA FALLS	28.11	57.02	42.17	0-4			6.10	
LILONGWE TO								
BEIRA	18.06	36.12	—	—			3.04	
BULAWAYO	28.16	57.12	—	—			6.10	
CAPE TOWN	46.13	133.06	—	—			15.04	
DAR-ES-SALAAM	35.04	70.08	—	—			7.10	
DURBAN	53.12	107.04	85.00	10-120			12.01	
JOHANNESBURG	43.10	87.00	64.14	10-120			9.10	
LONDON	164.03	328.06	250.08	0-90			55.10	
			246.11	19-45 (A)				
			241.18	19-45 (B)				
LOURENCO MARQUES	41.07	82.14	56.14	6-30			9.04	
LUSAKA	27.17	55.14	44.06	3-7 (D)			6.04	
NAIROBI	56.16	113.12	84.01	14-30			13.00	
NDOLA	31.00	62.00	52.05	3-7 (D)			7.02	
SALISBURY	19.13	39.06	—	—			4.03	
KARONGA TO								
LONDON	176.10	353.00	305.02	0-90			56.10	
			271.05	19-45 (A)				
			266.12	19-45 (B)				
MZUZU TO								
LONDON	171.19	343.18	296.00	0-90			56.04	
			262.03	19-45 (A)				
			257.10	19-45 (B)				

NOTES:—
A. Stopovers permitted at this fare. Available Sept.-May only.
B. Stopovers NOT permitted at this fare. Available Sept.-May only.
D. No minimum stay on week-ends.

From/To	Single	Return	Exc. Bag per kg.	Cargo per kg.	Notes
BLANTYRE TO	£ s	£ s	s d	s d	
CHILUMBA	17.13	35.06	4.03	3.03	
CHITIPA	18.19	37.18	4.07	3.07	
CHILUMBA TO					
CHITIPA	not available				
FORT JOHNSTON	17.00	34.00	4.01	3.03	
KARONGA	1.06	2.12	6	6	
LILONGWE	11.01	22.02	2.09	2.02	
MONKEY BAY	15.02	30.04	3.08	2.11	(a)
MZIMBA	5.05	10.10	1.04	1.02	
MZUZU	3.05	6.10	6	9	
SALIMA	13.16	27.12	3.02	2.09	(a)
ZOMBA	11.10	23.00	2.09	2.02	(b)
CHITIPA TO					
FORT JOHNSTON	18.06	36.12	4.05	3.06	(a)
KARONGA	2.04	4.08	8	6	
LILONGWE	12.07	24.14	3.00	2.04	
MONKEY BAY	16.08	32.16	3.11	3.01	(a)
MZIMBA	6.10	13.00	1.07	1.02	
MZUZU	4.11	9.02	1.02	1.10	
SALIMA	15.02	30.04	3.08	2.11	(a)
ZOMBA	20.10	41.00	5.00	3.02	(b)

NOTICE: Malawi will convert to Decimal Currency in February 1971. The units will be (K) Kwacha and (t) tambala. 1 Kwacha — 100 tambala.

DOMESTIC FARES AND RATES

From/To	Single	Return	Exc. Bag. Per Kilo.	Cargo Per Kilo.*	Notes
BLANTYRE TO (MWZ)	£ s	£ s	s d	s d	
FORT JOHNSTON	3.18	7.16	1.00	9	
KARONGA	18.19	37.18	4.07	3.07	
LILONGWE	6.12	13.04	1.07	1.03	
MONKEY BAY	5.16	11.12	1.05	1.01	
MZIMBA	13.00	26.00	3.02	2.06	
MZUZU	14.08	28.16	3.07	2.08	
	—	115.00	—	—	
SALIMA	7.10	15.00	1.10	1.05	
ZOMBA	1.11	3.02	6	—	
FORT JOHNSTON TO					
KARONGA	18.06	36.12	4.05	3.06	
LILONGWE	5.19	11.18	1.06	1.02	
MONKEY BAY	1.18	3.16	6	4	
MZIMBA	13.07	26.14	3.03	1.10	
MZUZU	13.15	27.10	3.02	2.00	(a)
SALIMA	8.14	17.08	2.02	8	(a)
ZOMBA	5.09	10.18	1.05	1.03	(b)
KARONGA TO					
LILONGWE	12.07	24.14	3.00	1.04	
MONKEY BAY	16.08	32.16	3.11	2.01	(a)
MZIMBA	6.10	13.00	1.07	1.00	
MZUZU	4.11	9.02	1.02	8	
SALIMA	15.02	30.04	3.08	2.00	(a)
ZOMBA	20.10	41.00	5.00	3.02	(b)
LILONGWE TO					
MONKEY BAY	4.01	8.02	1.11	9	
MZIMBA	6.08	12.16	1.07	1.02	
MZUZU	7.16	15.12	1.08	1.05	
	—	18.10	—	6	
SALIMA	2.15	5.10	8	6	
ZOMBA	8.05	16.10	2.00	1.05	
MONKEY BAY TO					
MZIMBA	10.09	20.18	2.06	2.00	(a)
MZUZU	11.17	23.14	2.11	2.02	(a)
SALIMA	1.06	2.12	6	3	
ZOMBA	7.07	14.14	1.10	1.04	(b)
MZIMBA TO					
MZUZU	2.00	4.00	6	5	
SALIMA	9.03	18.06	2.03	1.09	(a)
ZOMBA	14.11	29.02	3.07	2.05	(b)
MZUZU TO					
SALIMA	10.11	21.12	2.07	2.00	(a)
ZOMBA	15.19	31.18	4.00	2.06	(b)
SALIMA TO					
ZOMBA	9.01	18.02	2.03	1.07	(b)

NOTES:—
* Regular shipments by air cargo may earn a rebate on this basic charge.
† Enquire at Air Malawi offices or cargo agent.
‡ Excursion Return fares valid Friday-Monday only.
(a) Via Lilongwe.
(b) Via Blantyre.

GATEWAY FARES VIA BLANTYRE

From/To	Normal Fares		Excursion Fares		Notes
	Single	Return	Return	Validity	
JOHANNESBURG TO (SA R)	R c	R c	R c	Days	
BLANTYRE	63.10	126.20	88.30	10-120	
LILONGWE	74.60	149.20	111.00	10-120	
LUSAKA	64.60	129.20	93.60	10-120	C
LONDON	274.10	548.20	460.10	0-90	
NDOLA	74.40	148.80	107.90	10-120	C
NAIROBI	115.60	231.20	154.10	10-120	
LUSAKA TO (ZM K)	K n	K n	K n		
BEIRA	50.90	101.80	63.60	6-30	
BLANTYRE	36.50	73.00	58.30	3-7	D
JOHANNESBURG	64.60	129.20	93.60	10-120	C
LILONGWE	47.80	95.50	81.00	3-7	D
LOURENCO MARQUES	72.50	145.00	108.00	6-30	
SALISBURY	42.90	85.80	62.70	3-7	D
SALIMA	49.50	99.00	84.30	3-7	D
NDOLA TO (ZM K)					
BLANTYRE	41.90	83.80	67.00	3-7	D
BEIRA	42.00	84.00	69.70	6-30	
JOHANNESBURG	74.40	148.80	107.90	10-120	C
LOURENCO MARQUES	86.00	172.00	114.10	6-30	
SALISBURY	55.20	110.40	86.10	3-7	D
SALIMA	54.90	109.80	93.00	3-7	D
SALISBURY TO (RH S)	\$ c	\$ c	\$ c		
BLANTYRE	23.40	46.80	38.80	0-4	
LILONGWE	33.70	67.40	—	—	
LUSAKA	42.90	85.80	62.70	3-7	B
LONDON	270.10	540.20	400.10	19-45	A
			392.10	19-45	B
NAIROBI	102.10	204.20	153.10	14-30	
NDOLA	55.20	110.40	86.10	3-7	B
SALIMA	36.40	72.80	64.80	0-4	

NOTES:—
A. Stopovers permitted at this fare. Available Sept.-May only.
B. No Stopover permitted at this fare. Available Sept.-May only.
C. Travel via Blantyre is permitted provided that the direct flight between Johannesburg and Blantyre and v.v. are used.
D. No minimum stay on week-ends.

AIR MALAWI CATERING SCHEDULE

Meals and refreshments are served on the following services.
NOTE.—No cabin service is available on Britten Norman Islander flights (QM 400 series).

Flight No.	Aircraft type	Catering		
001	BAC	M/R	933	S/S
002	"	M/R	934	A/R
003	"	C/L	935	S/S
004	"	S/S	937	C/L
005	"	A/R	938	C/B
006	"	S/S	960	C/L
007	"	C/L	961	A/R
008	"	S/S	970	B/T/C/
			971	B/T/C/
224	AO	M/R		
225	"	S/S		
229	"	S/S		
230	"	C/L		
235	"	S/S		
238	"	C/B		
274	"	B/T/C/	BLZ/LLW	
			C/L LLW/	
			ZZU	
275	"	A/R	ZZU/LLW	
			B/T/C/	
			LLW/BLZ	

M/R —Morning Refreshments
C/L —Cold Lunch
A/R —Afternoon Refreshments
S/S —Sundowner snacks
B/T/C—Bar service, Tea, Coffee
C/B —Continental Breakfast
No cabin service available on services 400 flight numbers.